

Birmingham Pays \$500 for Unused Fire Tower Plans

Payment of \$500 for the design of a structure which was never built was authorized by the Birmingham city commission last week.

Architect Linn Smith, of Linn Smith Associates, drew up plans in 1967 for a training tower addition to be constructed at the Adams fire station.

Because of difficulty in obtaining

federal matching funds splitting the cost of the civil defense and fire training tower, the project was temporarily abandoned by the city.

City Manager L. R. Gare told city commissioners last week that Smith's detailed plans had been turned over to the city, and would be ready for use if the training tower's construction is included in a future city budget.

Smith delayed submission of his \$500 invoice to the city for two years, because he was optimistic that the tower would be constructed. Gare said the statement was submitted recently because construction now "seems unlikely."

County Has 9,036 U. of M. Alumni

ANN ARBOR — Well over 75,000 University of Michigan alumni reside in this state, a tabulation recently prepared by the U-M Alumni catalog office indicates.

This shows that 76,980 alumni lived in Michigan, prior to June, 1969, graduation. More than half of this total lived in Wayne, Washtenaw, and Oakland counties.

Oakland county contains 9,036 U-M alumni, while Wayne has 22,858 and Washtenaw lists 9,968.



Looking Down on the Big Game

Playing checkers the hard way. That is what John Drake, 45, of 3114 E. Bradford, Birmingham, and Kenny Nurse Mrs. Fay Schroeter are doing. The king-size checkers and board help Drake regain the use of limbs partially paralyzed by a stroke. Drake, a patient since February, 1958 at the Sister Kenny Clinic, a Torch Drive agency, has recovered sufficiently to return to his job as an accountant, but takes Kenny therapy once a week. The Sister Kenny foundation reported this week that its outpatient center at 22646 Woodward, Ferndale, provided treatments for 26 Birmingham residents during the past year.

Russia's Ahead and Looks As Though She's Gaining

By CARL H. ZWINCK
Seaholm High Science Instructor

Russian scientists and technologists already surpass the United States in certain specific fields. With a total economy equal to only about 40% of ours, Russia has demonstrated to the world leadership in rocketry and some other areas.

Dr. Harry Schwartz, economist and Soviet affairs writer for the New York Times, last week stated that "In 1945 the United States was the top dog and we thought we would remain that — but if anything is clear now, it is that the 20th century is not going to

be the American century.

"THERE HAS been a catastrophic shift in the world balance of power and our children are going to have to pay for it," Dr. Schwartz stated at a lecture in Ann Arbor.

"Each year the Soviet Union's production increases and it becomes stronger than the year before. It is not a question of when the Soviet Union will equal the United States but when it will surpass us."

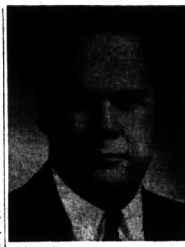
Dr. Schwartz spoke at a University of Michigan lecture open to the public, the closing program of five dealing with the challenge of Soviet expansion. He pointed out the recent rapid progress the U.S.S.R. has made in steel, electricity, petroleum, machinery, and other heavy industries.

WITH ONE third of all living people today under Communist rule, Dr. Schwartz warned that we must "look to our defenses," not only in missiles, but in education, in providing adequate funds for research, and in the solution of our race problem, which is one of our greatest weaknesses.

If we don't get over the race problem, we not only deserve to lose the world's struggle—but we will."

Dr. Schwartz also discussed the advantages given to Russia in economic competition by last year's recession and the current steel strike.

Many others who have been to Russia and studied the international scene over the past 15 years have given us similar warnings: recent developments abroad show that the cold war is far from over and that the economic and political rivalry is becoming greater.



R. H. MAURER

Maurer Promoted At Burroughs

Three promotions in the Burroughs division sales organization were announced last week by Ken T. Bement, general sales manager.

R. H. Maurer, manager of dealer sales for the United States and Canada, will be new manager of region III headquartered at 6071 Second Ave. The appointment is effective immediately.

J. H. Poole, former manager of region III, has been re-assigned to manage region I with offices also at the home office.

Replacing Maurer as manager of the corporation's dealer sales is Jack T. Suydam, who will assume direction of marketing the firm's full line of adding machines, cash registers and business machines and supplies to more than 8,000 independent retail dealers.

Maurer, a native of Washington, D. C., joined Burroughs in 1936 after receiving his degree at the University of Maryland. Married, he lives with his wife and four children at 18646 Devonshire, Birmingham.

Suydam, who came to Burroughs in 1949, is a native of Long Island and a graduate of Lafayette College, Easton, Pa. The Suydams have three daughters and live at 6820 Mark Court, Birmingham.

Birmingham Youth With Army Security Agency in Alaska

FORT RICHARDSON, ALASKA — Army PFC, Lawrence H. Crowley, son of Rev. and Mrs. Archie H. Crowley, 1986 Northlawn, Birmingham, recently arrived in Alaska and is now a member of

the U. S. Army security agency. Crowley, an administrative specialist in the agency's headquarters at Fort Richardson, entered the Army in September 1968 and received basic training at Fort Leonard Wood, Mo.

The 21-year-old soldier is a 1966 graduate of Cranbrook high school in Bloomfield Hills, Mich., and attended Miami University.

Store Hours:
Mon. thru Sat.
9:30 A.M. to 6:30 P.M.

THE BOYS GO
BACK TO SCHOOL IN
OUR LONG SLEEVE KNIT SHIRTS



- A. hopsack-textured cotton knit, embroidered chest motif. chestnut, blue, olive, red. 4 to 7 sizes, 2.50 8 to 20 sizes, 3.00
- B. houndstooth check cotton knit, red, gold, chestnut or olive green. 8 to 20 sizes, 3.00
- C. orlon-and-wool knit, red, gray or camel. 4 to 7 sizes, 3.00 8 to 20 sizes, 3.99
- D. textured-stripe cotton knit, modeled knees of antique gold, brown, blue or olive green. 4 to 7 sizes, 2.29 8 to 20 sizes, 3.00

Jacobson's
childrens shops

Willits at Woodward
Birmingham

More Eye Appeal...

for SUMMER COTTONS

Professionally Cleaned Cottons Look Better
Stay Fresh Longer

We have the PROFESSIONAL KNOW-HOW
to handle your SUMMER COTTONS!

- Textured cottons
- High polished cottons
- Patent leather prints
- Straw fabrics
- Sheers and organdies
- Styled denims
- Laces

We Take Special Care of your
Wash 'N' Wear
Suits - Dresses

Two Convenient
Locations:

- WOODWARD
at
ADAMS RD.
MI 4-4630
- W. MAPLE
at
CRANBROOK RD.
MI 7-4411

Birmingham
DRIVE-IN CLEANERS

Stewart-Glenn
1630 South Telegraph Road • Federal 2-6448

ANNUAL MID-SUMMER FURNITURE SALE

reductions up to **40%**

WE LIST JUST A FEW OF THE MANY GREAT VALUES!

- 449.50 BROYHILL "EXPRESSION" DINING ROOM GROUP
Drop-Leaf Table, China Breakfront, 4 Side chairs \$329.00
- 89.50 SOLID MAPLE 60" HARVEST DROP-LEAF TABLE \$ 79.50
- 54.50 SOLID MAPLE 60" MATCHING BENCH \$ 49.50
- COLONIAL LAMP Brass base, white shade. Very special \$ 12.95
- 288.50 MAPLE DROP-LEAF TABLE with 4 CHAIRS \$179.50
- 178.50 MAPLE BUFFET AND HUTCH TOP Cushman Make \$149.50
- 354.00 TRADITIONAL CUSTOM-MADE SOFA, Turquoise Cover \$199.50

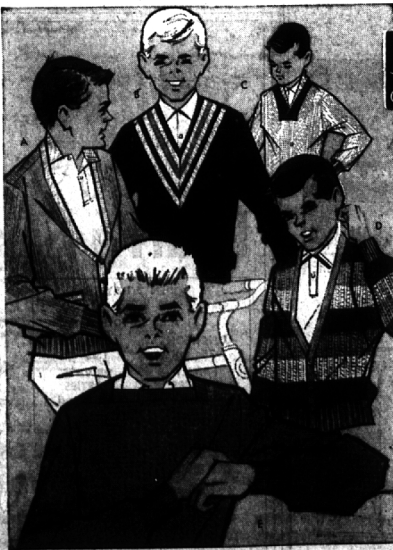
ENTIRE STOCK OF TRADITIONAL AND MODERN ACCESSORIES REDUCED!

Stewart-Glenn
1630 South Telegraph Road • Federal 2-6448

Interior Decorating Service At No Additional Cost.

Open Thurs., Fri., Mon., Even. Free Parking Air Conditioned

2-Hour Free Parking
HAVE YOUR TICKET VALIDATED
WHEN YOU MAKE A PURCHASE
AT JACOBSON'S



Jacobson's
childrens shops

Willits at Woodward
Birmingham

boys' sweaters
that cap all
class honors

- A. Bulky knit orlon coat sweaters, two-tone trim, Oxford or beige, sizes 8 to 12, 7.98 Oxford, beige, dark green; sizes 14 to 20, 8.98
- B. Bulky knit orlon slipover with deep v-neck yoke. Grey, blue or white; sizes 4 to 6, 5.98 Olive, grey, blue, white, black or gold. Sizes 8 to 12, 6.98; 14 to 20, 8.98
- C. Orlon shawl collar slipover. White, red, blue; in sizes 4 to 6, 5.98 White, red, blue, olive; sizes 8 to 12, 6.98 White, blue, olive; in sizes 14 to 20, 8.98
- D. Brushed orlon boldly striped coat sweaters. Grey, white, brown combinations. Sizes 4-6, 5.98 Sizes 8-12, 6.98; 14-20, 8.98
- E. Orlon popcorn-ribbed pullover with lapped boat neck. Charcoal, olive, blue or burnished gold. Sizes 8-12, 5.98; 14-20, 7.98