



Doing Favors the Hard Way

WESTCHESTER — Girls went to the Never Never Land instead of a birthday party Saturday when Cindy Peifer, of 594 Roanoke, celebrated her eighth. Mrs. Albert G. Peifer made a Peter Pan character's costume for each of her daughter's 11 guests. When the party and the play-acting was over, the girls took their party-favor

Peter Pan Visits Westchester

WESTCHESTER—Peter Pan all but flew across the room Saturday at the birthday party for Cynthia Peifer. Anyone passing by the Peifer home would have sworn they saw Peter Pan and his friends party for the occasion.

Cynthia and her party guests were out-fitted in different costumes, all made by Mrs. Peifer. With record music from Peter Pan, Cynthia and her guests, who are thespians at heart, put on a performance of their own. To complete the party they also had Capt. Hook's favorite, "a green poison cake." Cynthia with her long blonde braids made a perfect Tinker Bell. She is the daughter of Mr. and Mrs. Albert G. Peifer of Roanoke drive.

A wrapped White Elephant plus

Berkshires

—WESTCHESTER
Barbara Reason—MI 4-9411

Frank Rocamora Back From China and Japan

BERKSHIRES — Arriving home laden with souvenirs from China and Japan was Frank Rocamora, son of Mr. and Mrs. R. S. Rocamora of 14 Mile road. Frank has spent the last six months overseas.

It was quite a homecoming for the Rocamora's had not seen their son for two years. Frank's mother and sister, Janis and Sharon, had for two years, he sometimes brought them and listened to the Japanese music box.

Frank's brother, Gary, was delighted with a leather jacket painted with dragons. Before serving six months overseas on the U.S.S. Jason Frank was stationed in San Diego.

Southfield High Band Schedules Annual Concert April 29

SOUTHFIELD — The Southfield high school Varsity Band will present its eighth annual concert at 8 p.m. April 29 in the new high school auditorium. This concert will be the first to be given in the new auditorium.

An innovation this year will be the presentation of the John Philip Sousa Award to the outstanding graduating senior of the band.

THE CONCERT program will include, "Michigan March," "The Wanderer's Call," "Clarinets Allegro" featuring seven clarinetists, "Ave Maria," "Camana," "Deep Purple," standard pop favorites, highlights from South Pacific, "New Trolol" and "Burst of Flame March."

There will be an admission charge of fifty cents. Children, seventh grade and lower, if accompanied by adults, will be admitted free of charge.

Southfield High To Dedicate New Auditorium

SOUTHFIELD—Southfield High PTSA is winding up the year with new campus at Rochester and will illustrate his speech with slides.

Dr. Roy Alexander, director of student services at MSU-O, will speak at the dedication of the new auditorium at 8 p.m. April 28. An open house will follow.



Large Tri-Level

On priceless lake front site . . . North Shore Hammond Lake, (no motors). Two magnificent trees . . . oak and sycamore. Every convenience. Built in summer of 1955 by one of the better builders. Luxury living for the discriminating . . . in the very best atmosphere . . . ideal for entertaining. The setting makes a luxury home.

This home can't be duplicated at any price. Only \$55,000 by owner
Phone Pontiac, Federal 8-1966 anytime for appointment sometime soon.

In the Bloomfield Hills School District

HOUSEMAN-SPITZLEY CORPORATION

takes pleasure in announcing

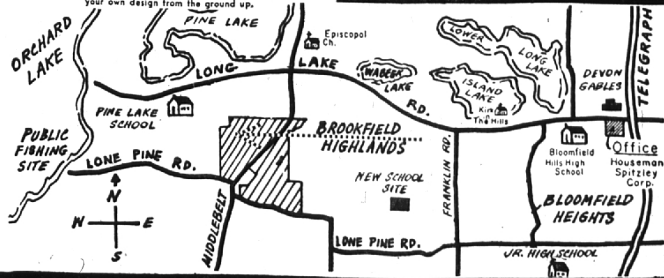
A NEW ADDITION to

BROOKFIELD HIGHLANDS

Beautiful hills: perfect for ranch, bi-level and tri-level homes. Blacktop roads and central water system. Hilltops, valleys, stream and timber.

CUSTOM BUILDING DEPARTMENT

We will duplicate any of our models to suit your specifications, work from your plans or help you originate your own design from the ground up.



43 beautiful NEW Homesites

50 Outstanding Homes built here during the last 12 months

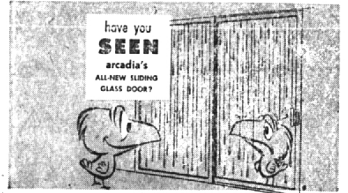
Salesman on property every afternoon—or call for our new map!

BLOOMFIELD HILLS OFFICE: Long Lake Road at Telegraph
Opposite Devon Gables PHONE MI 4-7422

HOUSEMAN-SPITZLEY CORPORATION
306 Washington Blvd. Bldg., Detroit 26.
Phone WO. 3-1816

The Houseman Spitzley Corporation has developed over 300 fine subdivisions since 1914.

MODERNIZE WITH SLIDING GLASS DOORS, WINDOWS AND WINDOW WALL



It's WEATHERTIGHT

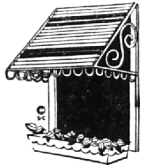
Arcadia's new sliding glass door is wonderfully practical. The snug fitting panels and special sills defy rain! Not will the wind whistle past the deep wood pile weatherstripping that hugs every moving panel.

With Arcadia doors, only the LOOK of the outside comes in—unless you whisk aside the clear glass in its light-weight enduring aluminum frame. And that takes only the touch of a finger.

Call or see us for an estimate on installing Arcadia sliding glass doors in your home. America's leading architects and builders will tell you Arcadia is best!

GRAHAM GLASS CO.

A Complete Glass Service
2011 W. Big Beaver Rd., Birmingham
MI 6-5488
COMMERCIAL & RESIDENTIAL
FREE ESTIMATES NO MONEY DOWN



Need New AWNINGS? Order NOW!

Pay less and avoid Spring rush

FOR FREE ESTIMATES CALL . . . **BIRMINGHAM AWNING CO.**
LARGE SELECTION OF STRIPES AND SOLID COLORS IN—VINYL, CANVAS, ALUMINUM—
2914 N. WOODWARD LI 9-1910

ATTRACTIVE COLONIALS



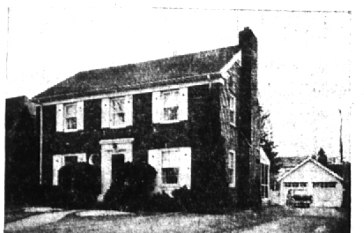
Cranbrook Road. The good design in this particularly attractive interior includes a full dining room as well as a paneled breakfast area; also a summer porch. 3 Bedrooms, a tiled recreation space, first floor lav, and 2 1/2 car attached garage. You will appreciate the convenience of living within walking distance to the schools. A unique opportunity at only \$26,900.



Bloomfield Village. Fine landscaping and trees frame this 4 bedroom, 2 bath brick and frame Colonial, which is in perfect condition. The baths are newly tiled, there is a first floor lavatory, the recreation room is finished, carpeted throughout, and the porch is screened. It is very unusual when a 4 Bedroom Colonial is offered in the Village at just \$36,800.



Farm-Style Colonial with a barbecue on the roomy screened porch. The entire first floor and 3 of the 4 bedrooms are carpeted. 2 1/2 baths, library, attractive recreation room. The decor is absolutely charming. An appealing low price in this fine location near Adams School at \$33,500.



This traditional brick colonial is near both junior high and grade school, but in a quiet neighborhood. The home is well landscaped and has a big screened porch. There is a fireplace in the living room, 3 bedrooms, carpeting, and first floor lavatory. It's a dandy buy at \$28,900.

Watt, Manuel & Snyder, Inc.

298 South Woodward
Midwest 4-6300

Realtors

Birmingham, Michigan
Jordan 6-2323