



Entry Closet for Storage

An entry closet is the answer to storage problems in a small home without suitable division of the entry area. It provides definition of this area and a place to hang coats and hats and keep rainy-weather footwear. Cantilevered bench can serve as auxiliary coffee table for the living room.

Mirrors Can Create New Vistas Of Beauty Throughout a Home

In every room of the house, and for every person in the household, mirrors have a job to do.

That's the opinion of June Cabot, Home Arts Council director for Libbey-Owens-Ford, who says, "The average home contains dozens of places where the need exists, but where nothing has been done to fill it."

Here is a check-list — by no means exhaustive — which Miss Cabot has compiled of the most important mirror locations in each room and some suggestions regarding mirror type and design.

LIVING ROOM: Over fireplace — If the room is modern, a simple mirror "corner framed" on a panel of architectural mirror. If traditional, a gilt-framed mirror of Early American or Victorian design.

Above sofa — Modern, a rectangular frame of wrought iron or polished brass or a frame covered in fabric matching draperies. Traditional, a frame of black magnolia wood with gold outline or a simple, unadorned gilt. In some cases two small mirrors over low tables at the sofa ends are also effective.

As table tops — Sheets of plate glass mirror cut to size and end tables give a bright, impervious finish.

DINING ROOM: Above sideboard — A rectangular shadow-box mirror is equally suitable to modern or traditional decor. The same luminescence is possible with a frame of ceramic tiles.

Sideboard surface — A cut-to-measure top will add to the decorative effect of candleabra and service, as will a mirror plateau on the dining table.

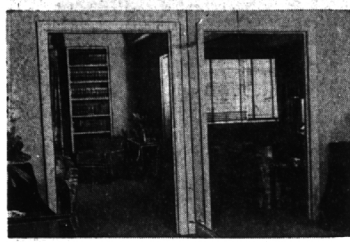
Bedrooms: Above dressing table — A single-unit table with mirror attached or a dressing table with a framed mirror above it. Either a narrow shadow box or a larger, black enamel frame will fit any room decoration.

ABOVE MAN'S CHEST-OF-Drawers: A three-way mirror in masculine design, especially if an electric shaver is used.

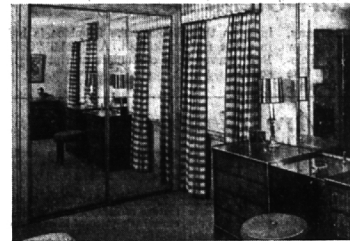
On door — A full-length dressing mirror can be attached at home with the aid of simple plastic clips provided by most mirror dealers.

Bathroom: Above wash basin — A three-way mirror is helpful in grooming. All bathroom mirrors should be backed with copper paint or plating as protection against moisture.

Entrance Hall: A single mirror for decoration and as an aid in donning coats and hats. Texture frames are appropriate, among them translucent plastic coverings sprigs of heather.



Wall of Mirrors that reflect furniture groupings on opposite side of area can make a long, narrow entrance hall seem wider and brighter and give it a new welcoming air.



Bedroom gets new beauty and seems much larger when mobile mirrors are installed as closet doors, which glide along an overhead track on nylon tires at a finger's touch.

How to Organize Painting Job to Get Best Results

"Do the headwork before the handwork" may be an old saying but it's especially applicable to painting projects.

Often when the do-it-yourselfer's enthusiasm fails to survive until the end of a job, it's because the task was tackled without a definite plan. So it's wise to figure out all the angles before a brush is dipped in a can of paint.

YOU'LL SAVE TIME, money and energy by planning ahead: make lists, calculate the tools you will need, how you will use them to solve the problems you encounter as you progress.

Then, when you've got all the required supplies and equipment on hand, you'll find the following rules helpful in proceeding successfully with your painting project.

1. Push furniture to center of room and cover.
2. Remove pictures, wall hangings, etc.
3. Place newspapers around edge of floor.
4. Dust walls. (Washing is seldom necessary, except in kitchen.)
5. Fill in cracks. Using spackling material for small ones, patching plaster for others.
6. Read directions for brand of paint you are using. Stir well.
7. Dampen brush or roller. Shake out excess water.
8. Do the hard work first. Use round one-inch brush for window sash; two-inch brush for edges and trim.
9. Wipe up drops and spatters with a damp cloth before they dry.
10. With brush, do ceiling line about two feet wide, then go down

all wall joinings.

1. Do balance of walls with large brush or roller. Insure coverage by using vertical strokes

Smooth Finish

When working open-grained woods, remember that to achieve a smooth finish, you must first close the pores with a wood filler.

Feed Grass Now!

Earlier the better — spring rains carry TURF BUILDER® down to hungry grass roots. This nutrient packed grass food costs so little per lawn... half as much does twice job of ordinary fertilizer.

5000 sq. ft. coverage:

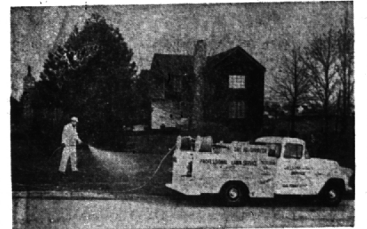
1 bag \$4.75
2 bags \$8.95
10 bags \$39.90
3 acres (25 bags) \$99.75

J. FAWCETT & CO.
IRHA HARDWARE
 Telephone MI 4-6020
 Open SUNDAY 10 to 2 •• 908 S. ADAMS Corner of WEBSTER.

Lawn Fertilizing Weed Killing Insect Control Chickweed Eradication

NOW You can have the benefits of all the latest scientific discoveries in lawn culture. And enjoy a lush, green, healthy lawn all season long. By adopting the modern AGI-SPRAY method.

We use only the highest quality materials approved by U.S. Government and State testing laboratories.



WHY struggle with a half-starved, pest-ridden lawn, with old-fashioned methods?

SOME OF YOUR NEIGHBORS have, and are still using our service. Ask them how easy and inexpensive it is to grow a luscious, pest-free lawn—then call us for quotations.

FERTILIZE - BLOOMFIELD LAWN CULTURE

Lincoln 8-0171

MODELS HOBBIES
H-O TRAINS
HOBBY SUPPLIES
 OVER 50,000 ITEMS
MODELS HOBBY SUPPLIES
 FRENDALE 2284 WOODWARD ST. 5-7282
 GARDEN GROVE 12424 GREENVIEW DR. 42-4266

Gas Heater Can Banish Cold Spots

Where's the cold spot in your house? Is it the living room you created by enclosing the porch for year-round use? The room you finished off by yourself in the attic? A clammy basement room, perhaps?

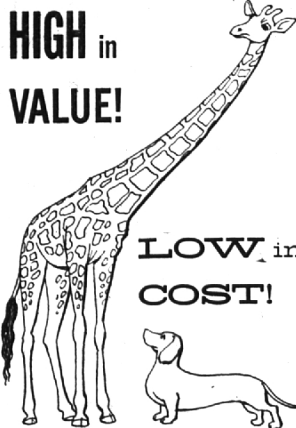
Nearly every home has one and it presents a serious problem. It's too chilly to use, yet you can't afford to waste perfectly good space; and if you send up enough heat to make that room comfortable, the rest of the house is too hot to bear.

IF THIS DESCRIBES YOUR situation, the solution, according to

the Gas Appliance Manufacturers Association, is a gas space heater. And in case you haven't seen the latest models on the market, you're in for a big surprise. They look more like the console models of the new television sets and are as individually styled, to fit present-day decor.

OF COURSE you're interested in performance, as well as appearance. On this point, GAMA says the modern gas space heater is engineered for quick heat recovery and is equipped with a temperature control. This means that you get instant results when you turn on your heater and can maintain or adjust temperature as desired. TO BE SURE you're getting the right heater for your individual needs, GAMA advises consultation with your gas company or any local dealer who handles gas space heaters.

HIGH in VALUE!



LOW in COST!

NATURAL GAS... ONE OF TODAY'S BIGGEST BARGAINS

Nature's silent wonder-fuel, *Natural Gas*, serves the average family with the convenience of air-conditioning automatic cooking, water-heating, refrigeration, clothes-drying and incineration, for just a few cents a day. *Natural Gas* is always at your service. It's fast, clean, quiet, economical and dependable... makes housework easier, more efficient. Today's gas appliances are completely automatic... and the hours of work saved each day by these wonderful appliances mean fun and relaxation for you and your family. Yes, today's modern automatic gas appliances provide more comfortable, more pleasant and healthier living. Compare and you'll agree that *Natural Gas Service* is truly, high in value... low in cost!

NATURAL GAS... FOR COMPLETE, MODERN LIVING

CONSUMERS POWER COMPANY

COUNTER TOPS

- Formica
- Vinyl
- Linoleum

REPLACEMENTS NEW INSTALLATIONS

T. E. HOGAN CO.

LI 4-3300 2865 WOODWARD AVE. (3 Bks. S. of 12 Mile Rd.) OPEN FRIDAY TILL 9 P.M.

For Your FAMILY ROOM

sure to please...with ease!

SMARTLY STYLED

arm chair

UPHOLSTERED IN NATIONALLY BRANDED plastic

FOR EXTRA BEAUTY now only

\$29.50

Graceful Swedge Legs

"SELF-LEVELER PROTECTS YOUR FLOORS AND CARPETS."

Here it is! Today's best buy in solid comfort and smart contemporary styling... the slim elegance of clean, graceful lines combined with the lifetime strength of steel! This large, handsome chair with full-contoured back and spring-filled seat will win a welcome seat in ANY room in your home. The nationally branded plastic upholstery gleams in a flash. Choose from a sparkling array of exciting new colors.

Open Mon., Thurs. and Fri. 'til 9

Just Drive Up Easy to Park—

Har-Trom HI-WAY FURNITURE MART
 1532 WOODWARD AVE., BIRMINGHAM, MICH.
 4 BLOCKS N. OF 14 MI. RD. Midwest 4-1410

Win THIS WONDERFUL LOWREY ORGAN

... Nothing to Buy!

FREE

Hear it demonstrated and receive a Registration Card at Our Booth at the

Royal Oak HOME SHOW
 WEDNESDAY thru SUNDAY
APRIL 1-5

Visit Our Huge Display Featuring the... Holiday ONLY \$995

GALLAGHER MUSIC Co.

Pontiac Royal Oak Detroit
 18 E. HURON—FE 4-0566 734 S. Washington—LI 5-7660 76 E. VERNOR—WO 1-7766
 Open Mon. and Fri. Evenings Open Thurs., Fri., Sat. Evs. Open Mon. Evenings