

Build up a Lawn Without Topsoil

By ALICE WESSELS BURLINGAME
Special Writer for The Birmingham Eccentric

Your writer was nearly remiss in not pointing out to our local gardeners that this is the time to apply dormant spray to your euonymus and lilacs if they have a scale on the branches. Underneath this scale you might find a bug, cozy in its hutch. The oil spray will dissolve the crust of the scale, and you know what happens to the bug which sucks the life out of your plants.

Fruit and shade trees, as well as evergreens, are often infested with red spider or scales. Your dormant spray is the answer for you to control the extent of the potential damage.

You apply a dormant spray when the temperature is in the forties and will stay in that temperature range for several hours.

You do not apply this spray after the leaf buds have begun "to break." Many of you with new lawns to plant grow at the prospect of buying loads and loads of topsoil. Research by our leading grass seedsmen have proven that the cost of building up your existing soil is only 1/3 the cost of buying topsoil.

YOU SPREAD a complete grass fertilizer at four times the normal rate at seeding time on the subsoil and follow up monthly feedings for the first three years.

This method of building a handsome lawn has the following advantages: you avoid introducing weed seeds, avoid labor costs for spreading the soil and smoothing it, and at the end of three years the grass will have added enough humus from the roots so that the resulting loam will have the cor-

rect consistency to please the fine lawn.

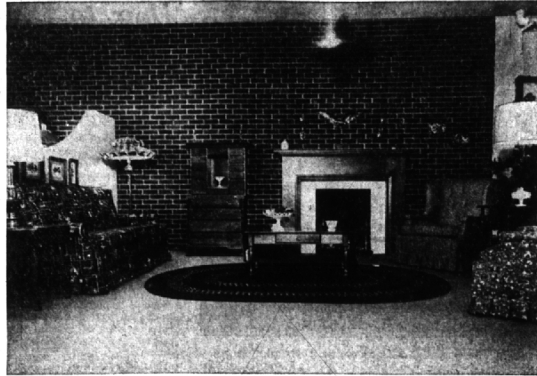
If you need a one-foot high protective fence at the end of a bank in a sunny location, I have seen a handsome effect. Grow espaliered apple trees from dwarf stock by training the horizontal branches to follow along the line of a metal pipe.

IT IS easy to confine the growth by judicious pruning, the flowers are pretty in spring and red apples showing from this vine-type growth along the railing is really a surprise. A prettier sight than flowers.

The following annual seeds can be scattered on the surface of the ground which has been "ruffed" by a rake in March and April, thus gaining a head start: poppies, cornflowers, larkspur and candy-tuft.

Many gardeners will be using jiffy pots made from pressed peat-moss this season. For starting seeds and transplanted materials such as tomato plants. This peat has fertilizer impregnated in the material. When it is time for the plant to become oriented to outdoor living, the pots are sunk in the soil and disintegrate to enrich the plant, thus avoiding the shock of joining the "cold-cold world."

These were dreamed up by two Norwegians and are imported to this country, as the result of research at the Norwegian agricultural college.



New Stewart-Glenn Display

The Stewart-Glenn Furniture company, formerly of Pontiac, has moved to its new building in Bloomfield township on Telegraph just north of Square Lake road. The company features early American furnishings.

Household Tasks Are Lightened

The trend toward automation, which is revolutionizing so many industrial and business operations, is now making rapid headway into the home, where it is proving equally effective in lightening the work load and conserving time and energy.

Cooking, for instance, becomes infinitely quicker and easier with the new ranges, featuring automatic surface control. This consists of a flat thermostat in the center of a gas burner or electric unit that can be set by means of a dial to maintain the pan temperature wanted. It adjusts the heat automatically and prevents scorched food, boilovers and burned pans.

THERE ARE, indeed, new electric ranges that take over the entire cooking process for either delicate or heavy dishes. With both time and temperature controlled, they can bake, broil, barbecue, boil, stew, french fry, grill and roast foods, as well as permit the housewife to cook on the surface burners.

The new ranges, both gas and electric are much easier to clean than their counterparts of yesterday. Features contributing to this important benefit are: removable knobs, handles and burners or electric units; lift-up range tops; replaceable foil oven liners; lift-up range tops; oven doors that swing to the side or come off completely for cleaning; and an oven liner

doors squared off to do away with the old bulging look. Some have no coils in back and thus can fit flush at the rear and line-up at front with adjacent cabinets.

FOOD IS MUCH more accessible in the new refrigerators that are equipped with swing-out shelves, that bring all the food out front and within easy reach with just a flick of the finger, no more groping and fumbling; no more forgetting foods left on the back of the shelf!

The swing-out shelves are completely adjustable, up or down. When more or less space is needed between shelves, you just press a

button and simply lift or lower the shelf. The shelves are also quickly removable to leave the entire interior free and clear for easier cleaning.

The new refrigerators are available in a wide range of decorator colors—pastels, charcoals, etc.—as well as white.

DISHWASHERS also have come in for their share of improvements. Available now are models that feature 4-cycle washing and push-button controls. Each push button controls a different type of washing action. For

Taping Joints

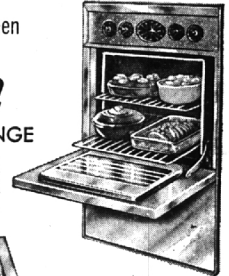
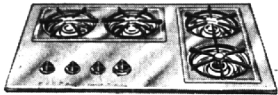
To make the job come out smooth, when taping joints in dry-wall construction, put on the finish coats of cement with a plasterer's finishing trowel, rather than with a putty knife. The trowel's wider area will permit better "feathering" of the joints.

For example, there is a gentle wash low heat for fine china and crystal. A special conditioning wash takes care of the pots and pans.

modern "pace setter" Kitchen with Fashion-Right

BUILT-IN OVEN and RANGE

A new look of kitchen elegance in your new or old home. From the softly-edge-lighted "Constellation" oven control panel to the gleaming top-burner frame, you'll find this built-in is something excitingly different. For further information regarding this built-in unit call LI 1-2284.



SET 'N FORGET BURNER
Makes all your pots and pans aromatic utensils... ends scorching, burning and boil-over. Thermostatic control reduces or increases heat automatically.

MERIT ELECTRIC CO.
LI 1-2284

Headquarters for Fine Draperies and Floor Coverings Since 1941

You'll always find more of what you want at **Molls**

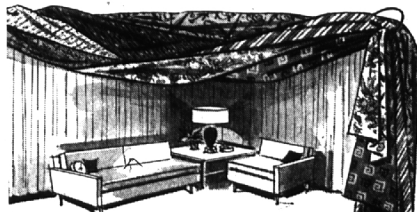
Where Quality Materials, Workmanship and Service Excel!

OVER 1200 SAMPLES To Choose From

- Wool, Nylon, Acrilan, Cotton — from leading mills
- Bigelow — Wunda Weve — Needletuft
- Lees — Gulistan — Hardwick & Magee

from \$4.95 sq. yd.

NO MONEY DOWN—up to 36 months to pay



Add Color and Beauty to your Home

- BEDSPREADS ... over 300 to choose from
- CURTAINS ... ruffles, panels, cafes
- BAMBOO DRAPES ... plain or design ... 22 colors
- FABRICS ... drapery and slipcover fabrics from \$1 a yard
- SOFA PILLOWS ... wide variety from \$2 to \$6
- DRAPERY HARDWARE ... every type of rod or fixture
- SHOWER CURTAINS ... plains or prints ... \$10 to \$20 a set
- UPHOLSTERY FABRICS ... over 200 patterns, \$5 to \$20 a yard
- PORCH SHADES ... types to suit your needs
- READY-MADE DRAPES ... solid or print



Molls is the COMPLETE Floor Covering Store. Here you will find a large selection of Carpets, Fiber Rugs, Hemp Squares, Floor and Wall Tile, and Linoleum. Phone us today.

FREE "What Goes With What" DECORATOR BOOKLET

By Ann Mason, Home Decorator for Lees Carpets Get Yours While the Supply Lasts

OUR CUSTOMERS TELL US We have the biggest selection of Drapery Fabrics they have ever seen.

OUR SALESMEN TELL US We have the biggest selection of Drapery Fabrics in Michigan

WE SAY THAT We have every type of Drapery Fabric from \$1 to \$20 a yard.

FE-4-0516 **Molls**



Tom Natch Decorator Service No Obligation

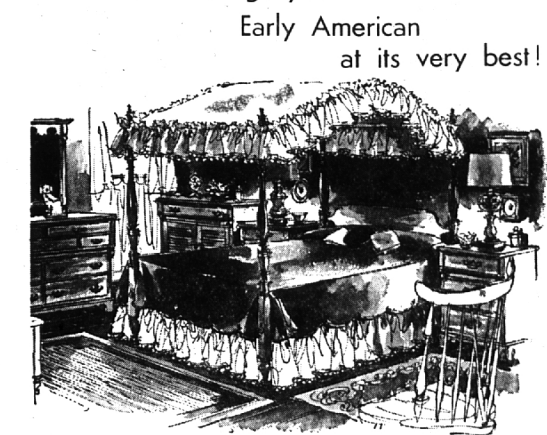
1666 SOUTH TELEGRAPH PARK RIGHT AT THE DOOR — OPEN MONDAY & FRIDAY TILL 9 P.M.

LANDSCAPE DESIGN

Reasonable Rates for Plans
Contact us when planning for your new home
James H. McCutcheon
LANDSCAPE ARCHITECT & CONTRACTOR
Member Michigan Association of Landscape Architects
1025 E. Maple
STEVENS BLDG. MI 6-5522



WIGGS brings you Early American at its very best!



THE MOUNT VERNON CANOPY BED \$89.50

DOUBLE SIZE in Cherry or Maple In Stock for Immediate Delivery
TWIN SIZE available on Order

This beautiful reproduction of a Washington-era canopy bed is expertly crafted of fine woods... the authentic design, hand shaded finish, and skilled cabinet-making, are features for which you'd expect to pay much more! Bed complete with canopy frame.

CANOPY AND BEDSPREAD ENSEMBLE
In Beautiful White Eyelet Embroidered Organdy
Canopy \$30.00
Bedspread \$35.00
Pillow Shams \$12.95 a Pair

WIGGS
24 WEST HURON ST.
In Downtown Pontiac

PARK FREE in Any Downtown Lot... Have Ticket Stamped at Store

Open Monday & Friday Evenings 'til Nine