

Mercy bestowing gifts of money on people or groups will not, by itself, do a great deal to uplift mankind, to raise the ethical standard of our family of human beings. With individuals, it may ruin them; groups may use it unwisely, even to society's detriment. Most of this world's best basic aids have been born in the environment of personal struggles.

The Birmingham Eccentric

BIRMINGHAM, MICHIGAN

Thursday, September 4, 1958

SECTION
B

ELLIOTT UPHOLSTERING

WATERFORD — OR 3-1225

Creators of Fine Living Room Furniture

VISIT OUR NEW SHOWROOM

TABLES — LAMPS — CARPETS

Open Evenings by Appointment

ELLIOTT FURNITURE

You will find many bargains in
The Eccentric Classified Columns.

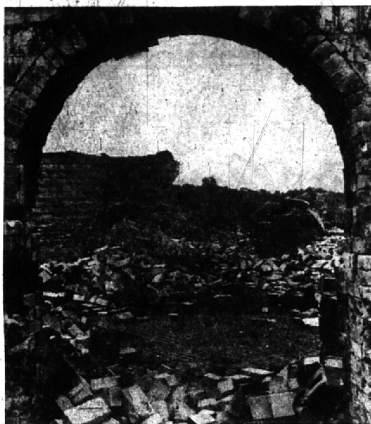
Scott-Shuphine

REUPHOLSTERING
TOO

OPEN MONDAY, THURSDAY and FRIDAY EVENINGS 'TIL 9
1185 S. Adams MI 4-8834

Just Like Rome

Abandoned Brickyard Resembles Ancient Ruins



For 34 years the Franklin area claimed at least one industry—a brick factory.

But in 1956 the clay ran out and the brickyard, at Inkster and Fourteen Mile roads in West Bloomfield township, closed down.

At its peak the plant employed about 50 persons, covered an area of about 125 acres and had a top output of 200,000 to 250,000 bricks daily.

Today little but piles of bricks and rubble is left. One large building still stands but the most of many kilns have been demolished. A couple still are partially complete—complete enough for a passerby to get an idea of their original shape.

The brickyard did, though, leave its mark on the countryside—a huge clay pit.

TRACES of a small "railway" that probably carried clay from the pits up the steep hill to the kilns can be found.

An occasional shooter finds the pits an ideal safe place for target shooting.

Amateur rocketeers have made use of the pits for launchings.

Scouts and other hikers often visit the area, examining the ruins of the brickyard or looking for fossils in the clay banks.

AND RECENTLY an Eccentric photographer in a somewhat artistic mood stopped by, was struck by the resemblance of the brickyard ruins to, perhaps, the ruins of Rome or some other ancient city, and took photographs you can see on this page.



ECCENTRIC PHOTO

Golf Immortal

Bobby Jones, golf's immortal grand master, made one of his very rare personal appearances to watch play in the recent 18th International Jaycee tournament in Tucson, Ariz. Talking over play with Jones is Ralph Dietrich of Birmingham. Jones only other appearance this year was at his own Masters tournament at Augusta, Ga.



Basements waterproofed TW 1-2000

LEADER
CLEANED
RUGS and
CARPETS
ACTUALLY
HAVE THE
FRAGRANCE
OF SPRING!

LEADER
CARPET CLEANING CO.
8700 LINWOOD AVE.
TY 5-8400

Fresh
Poultry
& Fish

Fancy aged
Beef cut
to your liking

Choice
Fruits
& Vegetables

Canning
Supplies

New shipment of baskets, trays and place mats



OLSEN'S MARKET

West Brown at Chester
Ample Parking
WE DELIVER
MI 4-1916
CLOSED SUNDAYS

Princess fair

soon to be wed
with Prince Gallant;
but have you planned
Candid's 'Par Excellent'?

Capture the joy, and the reverence of this momentous occasion with 'par excellent' candid and formal wedding portraits by Bill Williams.

Only Bill Williams masterful photographic know-how provides you with endearing memories of your wedding that will live on and on.

Air Conditioned
bill williams
Photographer
1107 CROOKS RD. (at Main)
ROYAL OAK
LI 3-4480
We are booking Fall and Christmas Weddings now.



Kentucky Blue	80c lb.	Perennial Rye	25c lb.
Creeping Red Fescue	80c lb.	Domestic Rye	20c lb.
Chewing Fescue	90c lb.	Red Top	80c lb.
Illiahee Fescue	95c lb.	Highland Bent	75c lb.
Clover	\$1.00 lb.	Merion Blue	\$1.95 lb.

HARDY
MUMS 75¢ Each

EVERGREENS

• FLOWERING SHRUBS •

Open LABOR DAY 9:30 A.M. to 3:30 P.M.

Theisen's GARDEN MART

Nursery Stock

3826 N. Woodward

Between 13 & 14 Mile Roads

Established 1948

Garden Supplies

Royal Oak

LI 9-4422

Dickinson's

Wabek Building
Birmingham

Saginaw at Lawrence
Pontiac