

# Learn To Skate at the BERKLEY SCHOOL OF ICE SKATING

Nationally Known  
Instructors With  
a Proven Method

- Private, Semi-Private and Group Instruction for All Ages
- Complete Line of Skating Equipment
- Skate Rentals
- Rink Available for Private Parties

LI 7-0744

3127 12-MILE RD., BERKLEY

## SOCIETY

### State Alums Plan Square Dance

For an evening of fun and entertainment, the MSU club of Oakland County is having a square dance for all MSU alumni and friends on Nov. 14. It will be at Granger's barn in Farmington township from 9 till 1 a.m. Although the emphasis is on square dancing there'll be "regular" dances, too. Serving on the ticket committee are Lew Wrenn, 1880 Packer road, Pontiac, and Dick Forbush, 29134 Rambling road, Southfield.

### MOMS Bake Sale

MOMS annual bake sale will be Friday at Nan's Hat Shop from 9:30 to 2 p.m. Proceeds will be used for hospitalized veterans and families. Nov. 10 meeting will be at the home of Mrs. Wilbur Johnson, 610 Southfield, Birmingham. Book Review will be given by Mrs. Rowland Quinn. Tea will be served.

### Have You Met . . .

Mr. and Mrs. David Wirth of 26876 Charles lane. They moved from Magnolia on Oct. 1. He is director for Yale and Towne Mfg. Co. They have three children.

B-8 THE BIRMINGHAM (MICH.) ECCENTRIC Nov. 6, 1958

### First Anniversary

Birmingham chapter of Delta Kappa Gamma, Alpha Omicron, celebrated its first anniversary Saturday at Kingsley Inn for luncheon. Guest speaker was Dr. Marion Edmans, professor of education at Wayne State university. He was one of 71 selected to make a month study of Russian Educational System.

### Torry Open House

Torry PTA will hold Open House in observance of American Education Week Monday at 8 p.m. William McCrathy, assistant to Judge Moore, will speak about how organizations such as the PTA help keep boys and girls out of juvenile courts. After visiting the rooms, refreshments will be served in the auditorium.

### Delta Gamma

#### Alums Set Meeting

Birmingham alumnae chapter of Delta Gamma will meet Tuesday at the home of Mrs. Leland Rodgers, 1612 Lockridge road, Bloomfield Hills, at 8 p.m. Co-hostesses will be Mrs. Frank Pero, Mrs. Conway Adams and Mrs. William Killeen. Mrs. Edwin Noth of the J. L. Hudson company, will speak on "The Romance of Old Prints" and show some of her collection of unusual prints. Mrs. F. E. Pero will also be installed as vice president at this meeting. New members to the group are Mrs. J. B. Crossley, Mrs. Oscar Link, Mrs. Donald Roe, Mrs. Stuart King, Mrs. Henry Cunningham and Mrs. Glenn Carlson, Jr.

Tick-Tock . . .

Tick-Tock . . .

Tick-Tock . . .

Tick-Tock . . .

Time You Came in and selected your  
Greeting Cards for Christmas!

*LaBelles*

137 WEST MAPLE

# SAVE \$2.30 AT KROGER THIS WEEK With These VALUABLE KROGER COUPONS!



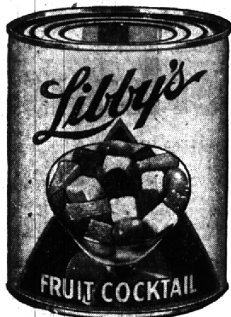
10c OFF LABEL

## INSTANT SPOTLIGHT COFFEE

6-oz. jar **79¢**

THE MAN-SATISFYING  
COFFEE . . . WITH  
FLAV-AROMA  
ONLY AT

**KROGER**



## LIBBY'S FRUIT COCKTAIL 25¢

LARGE  
2 1/2  
CAN

WITH COUPON

LIBBY'S NUTRITIOUS

**TOMATO JUICE** WITH COUPON 46-oz. **19¢**

LIBBY'S TASTIEST

**PEAS or CORN** WITH COUPON 2 303 cans **19¢**

LIBBY'S HAWAIIAN

**PINEAPPLE** DEEP MINTED CHUNK, SLICED OR CHUNK WITH COUPON No. 2 can **23¢**

### YOUR CHOICE

LIBBY'S DELICIOUS

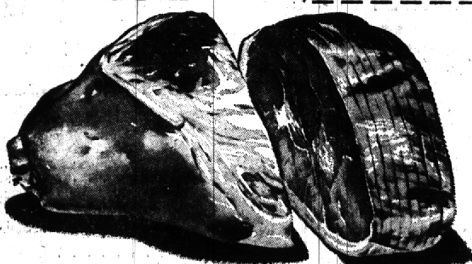
**BEEF STEW** . . . . . WITH COUPON 24-oz. can **39¢**

LIBBY'S

**CHILI WITH BEANS** . . . WITH COUPON 24-oz. can **33¢**

LIBBY'S

**CORNER BEEF HASH** WITH COUPON 24-oz. can **39¢**



SHANK PORTION

CENTER SLICES

THE COMBINATION OF THE SHANK PORTION PLUS THE  
CHOICE CENTER SLICES GIVES YOU THE  
FULL SHANK HALF

## DEER HUNTER'S SPECIALS! SMOKED HAM

FULL  
SHANK  
HALF

**43¢** Lb.

• BUTT END . . . Lb. 55¢ • WHOLE HAMS . Lb. 53¢ • CENTER SLICES . Lb. 99¢

FLORIDA PINK

## GRAPEFRUIT

5 Lb. BAG **39¢**

FLORIDA SWEET CORN 6 Ears **29¢**

CITRUS SALAD . . . . . **69¢**

ACORN or BUTTERNUT SQUASH 2 for **19¢**

SPINACH . . . . . 10-oz. pkg. **19¢**



REGULAR 23c

SAVE 8¢

## VIENNA BREAD

1-lb. loaf **15¢**

VALUABLE COUPON

SAVE \$1.30 ON HORMEL

**CANNED HAM**

6 1/2-lb. **\$5.99** WITH COUPON

Coupon valid at all Kroger stores in Detroit and Eastern Michigan, Wed., Nov. 5, through Sat., Nov. 8, 1958.

VALUABLE COUPON

SAVE 10c ON MAPLE LEAF

**BOILED HAM**

6-oz. pkg. **55¢** WITH COUPON

Coupon valid at all Kroger stores in Detroit and Eastern Michigan, Wed., Nov. 5, through Sat., Nov. 8, 1958.

VALUABLE COUPON

SAVE 10c ON MAPLE LEAF

**Canadian Bacon**

6-oz. pkg. **59¢** WITH COUPON

Coupon valid at all Kroger stores in Detroit and Eastern Michigan, Wed., Nov. 5, through Sat., Nov. 8, 1958.

VALUABLE COUPON

Save 30c on Plumrose Canned

**PORK LOIN**

2 lb. **\$1.99** WITH COUPON

Coupon valid at all Kroger stores in Detroit and Eastern Michigan, Wed., Nov. 5, through Sat., Nov. 8, 1958.

We reserve the right to limit quantities. Prices and items effective through Sat., Nov. 8, 1958, at all Kroger Stores in Detroit and Eastern Michigan.