

What a most valuable present parents could present to a child if, from its birth, a diary-like record were made up to, say, the age of ten or twelve . . . or maybe a few years later, depending on the child itself. Little beginning trials, various episodes that only childhood experiences . . . such a record would give a child priceless aids to pleasant adult recollections.

The Birmingham Eccentric

BIRMINGHAM, MICHIGAN

Thursday, November 6, 1958

SECTION
B



The aerial ladder swings into place.



On roof, two-man rescue operation begins.



Injured fireman is in position for descent.



Half-way down the ladder. This is how it's done.

One of the most crucial aspects of a fireman's job is rescue work, as important, if possibly not more so, than actually combating a blaze.

It can involve removing an injured or unconscious person from a smoke-filled room or a flaming building. It can be reaching a person trapped by flames, or aiding a fellow firefighter injured or overcome by smoke or fumes.

The rescue work can, and often does, include saving a person from water after a boat has overturned or ice has given way.

AND IT CAN have its "humorous" instances, too, when a kitten climbs too high in a tree, then gets frightened and can't come back down.

Birmingham's fine fire department is thoroughly trained in all phases of rescue operation, as demonstrated in this series of photographs.

Firemen from the Chesterfield station recently staged a simulated rescue of an "injured" firefighter from the roof of an apartment building at Southfield and Merrill. An Eccentric cameraman was on hand to record the rescue from the best vantage point—the roof of the three-story structure,

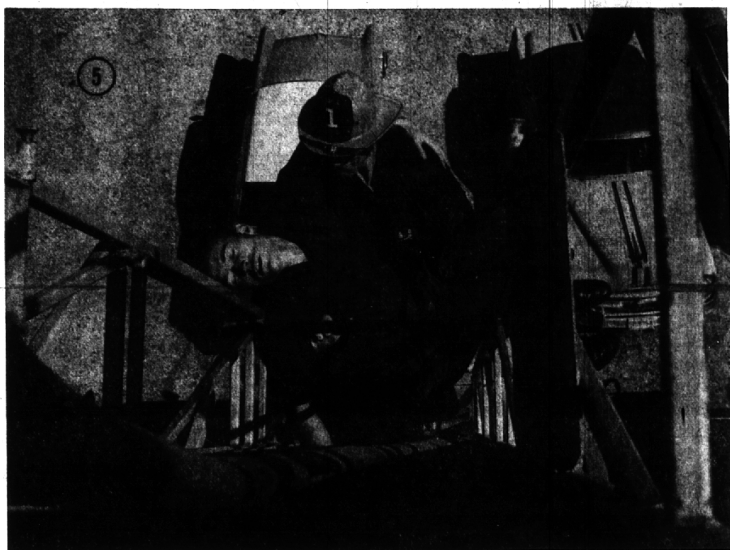
RESCUE!

one of the city's tallest.

FIREMAN William Stewart and Lt. George

Wallace (white hat) handled the rescue. The "injured" was Fireman Louis Cuniff.

Photo Story
by
Les Line



The cautious trip down begins.

36 YEARS ON WOODWARD AVENUE
20 IN BIRMINGHAM . . . 16 IN DETROIT

We Invite . . .

COMPARISON

Shop around first . . .
then see us. Our
small over-head means
a big Savings to you.
You can buy the best
from Dimas for
very much less.

Finest
Quality
... Latest
Fashions

USE DIMAS'
CONVENIENT
LAY-A-WAY PLAN
NO CARRYING CHARGES

Imported Fur Products Labeled
to Show Country of Origin



Emba Argenta
Breath of Spring
MINK STOLE
\$875

Dimas Furs

Hours: 9:30 A.M. - 5 P.M. MI 4-3930
227 S. Woodward Ave. — Birmingham Theatre Bldg.

THURSDAY-FRIDAY-SATURDAY

KRESGE'S 3 DAYS ONLY
BIG BUY SPECIAL

Save 77%! Men's
ARGYLE
SOCKS

This Sale Only
3 prs \$1.00
Reg. 59¢ pr!

depot's confined come in a variety of
washing single pattern . . . wash-free
brown, grey, navy, charcoal with vivid
pattern. Big selection . . . get several!

Save on all family hose
at Kresge's lower prices!



Exquisite Custom PICTURE FRAMING
at Kresge's in Birmingham and Northland Center
all work guaranteed

WEST MAPLE AT HENRIETTA
S. S. KRESGE COMPANY

A Lasting Gift . . .

A Chair for Christmas

See Our Display—Over 100 Chairs
Loungers—Recliners—Rockers
Vibrator Chairs

Occasional Chairs—most any style

SAVE AS MUCH AS 50% ON MANY

Never Before So Much for So Little at Hi-Way Furniture

Christmas Delivery Sure If Ordered by November 10th . . . Use Our Lay-Away

OPEN
'till
9 P.M.



HI-WAY FURNITURE MART
1532 WOODWARD AVE., BIRMINGHAM, MICH.

4 BLOCKS N. OF 14 MI. RD. Midwest 4-1410
EASY TO PARK . . . JUST DRIVE UP

Charge It
30-60-90

Budget
Up to 24 Mo.