

# Tatu and Friends Are Superb Comics

"Crazy October", which remained a week at the Cass Theater is first, and foremost, a superb comic vehicle for three indomitable ladies of the theater—Tallulah Bankhead, Estelle Winwood, and Joan Blondell. The fact that this play utilizes the extensive talents of this trio is reason enough for its existence. And each of the three ladies liberally endows her part with her own personal brand of comic virtuosity.

"Crazy October" appears to utilize the tawdry background and gaudy characters of the small Southern town with which the contemporary American theatre appears often to be obsessed. It does this, however, without falling into the current morass of psychological and sociological implications—the play remains simple and direct and this alone is refreshing. The plot is peppered with characters of little depth and social consequence who inhabit a road-side tavern presided over by the straggled, frazzled Daisy Filbertson, played by Tallulah Bankhead. The presence of a skeleton onstage, which is actually the remains of a friend whom Daisy was reputed to have had buried, lends a crassly ghastly note to the proceedings, perhaps a clue to the title.

THE PLAY moves quickly and simply through an interchange of adroitly conceived scenes. The author knows when to be comical without deteriorating to farcicalism—to be sentimental while avoiding the cloying—to be cynical yet not despondent. He has created, in essence, something overlooked to a great extent in the theatre today—entertainment.

In the part of Daisy Filbertson, "Tallulah" runs her full gamut of grimaces and deep-throated guttural sounds in a subtly-conceived comic characterization. Rudy Filbertson, her weakling son, played by Jack Frost, is another splendid comic study. Joan Blondell is fine as a buxom girl-of-the-street with that heart-of-gold.

Estelle Winwood gives her usually attained performance as a somewhat featherbrained member of Daisy's dependent circle. Fred Boer and Mary Doyle are believable and effective as the young lovers.

## ITEM OF NOTE

The distinguished London repertory company, The Old Vic, is coming to Masonic auditorium to present Shakespeare's "Henry V" Nov. 21 and 22 and "Hamlet" on Nov. 23. The casts will feature the outstanding actor John Neville as well as Barbara Jefford and Laurence Olivier. Their performances have been met with acclaim throughout the world.

## WHAT'S in a NAME?

PLENTY! It can and does come to mean as much, or more, than the product which carries it. In fact, quality, design, beauty, etc., are a few of the things that put real meaning into the name.

For Example:—

**ANRI**—From here come the exquisite hand-carved Madonnas, the creches with each tiny figure so perfect they might move by themselves, the Angels' Choir (one can almost hear their voices and music).

**BASKETVILLE, VERMONT**—Apparently the sturdy Vermonters are not simply rock wall builders. Judge by the 3-legged mushroom stools which would be charming by the fireside—the realistic clam shell baskets, small enough for a purse, large enough for arrangements with greens or dried things. Even gaily-colored picnic hampers catch your eye because they are well made commodious, exciting and useful.

**JIMBO'S JUMBOS, INC.**—What's in this name is a treat—huge, raw, shelled (but unskinned) pecans in small hampers bags—each one with a few recipes on how to win friends and influence them.

**RHETA COLES**—When you need a dough basket, Rheta has them (don't ask for her address). She also imports the fantastic, creamy-white, lacy flowerpot holder that can be turned inside out, etc., but still fits only the pot it was made for. The pots come in many sizes, as does Rheta Coles pot holders.

**BAILEY**—This is a new name in the pottery, or ceramics, field. That his ability is unusual is shown by the fact that he THREW his pots in Virginia. We have them here, now, unbroken and quicker than parcel post.

The shapes everyone can enjoy, but the subtle grays, off-browns, off beige, off-off greens, awful, well, awfully exciting hues are a bit beyond our meagre powers of description.

**VENEZUELA**—That's where our daughter lives and we take a moment to say, "Hi".

**BONNIE WEED**—There are many artificial fruit and flower ornaments in homes in this country that come from the dead hands and inquiring mind of this lady. A artificial material? Yes, but when she puts them together and then breathes on them, they are ALIVE—in anybody's home.

**HULBERT, MICHIGAN**—You wouldn't believe that this town which you never heard of and don't, of course, know where it is, could produce out of lovely Michigan rock maple, such handsome oval salad bowls with a fine Old Colonial (?) finish, would you?

**ALBERGOTTI**—We are not sure why Albert has gotten so much importance—but when you taste his WHOLE HALVES of excellent large PECANS, you will know the reason why. At \$2.25 a pound, you can sneer at the super-markets stuff.

NOTE:—An error in last week's ad (whose it was, we will find out later) said:—BENT GRASS lawns should be cut short (1 1/2 in.) until definitely dormant. It should have read, 1/2 (one-half) inch. Eccentric Advertising Department's note: CORRECTION COURTESY OF THE ECCENTRIC, whose error it was.

**SWEDEN**—The land of the long distance truck stars. But while some run, many more sit and carve out of wood the most unusual birds and bird figures you have ever seen. And other sitters paint them until they are a joy to behold.

NOTE:—We are trying desperately to keep some of our lovely things until you arrive. We might succeed, but it is a bit doubtful.

? (What's in a name, anyhow?)

**McCLELLAN-BALL CO.**

**YARD SUPPLIES FARM KENNEL**

**BIRMINGHAM, MICHIGAN**

Phone MU 4-1133 850 S. Woodward

## People's Column

### Mothers Tribute To Harry Klimushyn

To the Editor:

When my daughter Tena returned home from school a couple of weeks ago her face mirrored with the poignancy of youth all the shock and sadness shared by everyone over the untimely death of Harry Klimushyn.

She stopped on the davenport and called out, "Mother, he was ALWAYS smiling!" Those words kept haunting me as I was preparing dinner and I recalled that every article about him stresses that particular facet of his personality.

I thought back to another tragedy in recent years when Eddie Klapproth was killed in an automobile accident. He spent considerable time in our home and we dearly loved him. He had a sunny smile that would gladden your day and warm your heart and he too wore it constantly.

AND I RECALLED still another incident indelibly etched in my memory. I was walking down the corridor of the old Birmingham high school, where I had gone to pick up my eldest daughter. A young chap passed by, spoke to me, and flashed such an engaging smile that I never forgot his face, although I never saw him before or after that brief encounter.

I remember making a mental note "that boy is going places," and asked my daughter his name. That was Mark Joshy, one of the most outstanding graduates of Birmingham high school, whose promising career came to such a tragic and so shortly after by cancer.

SURELY THE Saints in Heaven rejoice when Harry and Eddie Mark joined their ranks, and it should inspire our children and ourselves to cultivate such sweetness of character and cheerfulness of disposition that the warmth of our smiles will be remembered after we, too, are gone.

YLL REMEMBER Franklin

**Completes Course**

Pvt. Frederick Sickenberger, son of Mrs. E. H. Sickenberger of Floyd street, Birmingham, recently completed the eight-week clerk-ypist course at the Army Armor Training Center, Fort Knox, Ky. He entered the army in June and received basic combat training at the fort.

Are you thinking of buying a new house? Then read the "For Sale-Houses" columns on the Classified Ad page of this week's Eccentric.

**NOW YOU CAN GET CHANNEL 6 FOOTBALL!**

**BETTER TV in minutes!**

**NEW CHANNEL MASTER T-W ANTENNA KIT**

Everything you need for a complete antenna installation—nothing else to buy.

**FREE! TV ANTENNA CHECK-UP KIT**

Consisting of 18-page illustrated booklet and 10-point check list.

prepared by **CHANNEL MASTER**

the world's largest maker of TV antennas

Storm damage, outdated antenna design or just plain old age can be the cause of "snow," interference, "ghosts" or "problem stations."

This special "Check-up Kit" helps you find out if your antenna is giving you the picture you paid for when you bought your TV set.

Get your free Channel Master "Check-up Kit" at

Beverly Hills TV 4720 N. Woodward, B.O. 12 4-6000 Birmingham TV 1842 S. Woodward, Birm. 12 4-2035 Progressive TV 13001 W. 7 Mile UN 4-6086 T.V. Aerial Service 18413 Grand River KE 3-3660 (Sponsored in the public interest by RADIO "SPRCS")

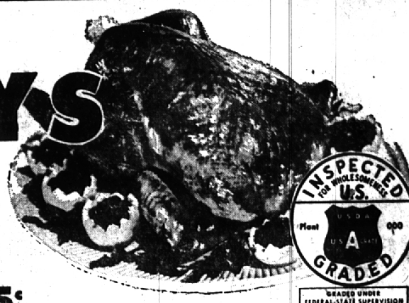
# Wrigley SUPERMARKETS

Everything You Need For  
**THANKSGIVING Fixins**

**Plus Free Gold Bell Stamps**

CORN CITY or BUTTERFIELD  
FANCY YOUNG, OVEN READY

**TURKEYS**  
20 to 24-lb.  
Avg. Wt. **33** lb.



Wrigley's Own  
**Gold-N-Birds** 3 1/2 to 4-lb.  
Average weight **45** lb.  
Ready To Roast or Bake, With Stuffing

**PLUS FREE GOLD BELL GIFT STAMPS**

Pure White All Vegetable  
**SPRY**  
3 lb. can **69**¢ **SAVE 20**¢

Domino 10X, Brown or Yellow  
**SUGAR**  
2 1-lb. boxes **25**¢ **SAVE 6**¢

Pillsbury Best  
**Cake Mixes**  
White, Yellow, Spice, Chocolate, Caramel and Pineapple  
4 pkgs. **100**¢ **SAVE 19**¢

Ocean Spray  
**Cranberry Sauce**  
Jelled or Whole  
2 16-oz. cans **39**¢ **SAVE 10**¢

**PLUS FREE GOLD BELL GIFT STAMPS**

Cape Cod Late Howes Fresh

**Cranberries**  
1-lb. cello **19**¢



Prices effective thru Saturday, Nov. 22. We reserve the right to limit quantities.

**PLUS FREE GOLD BELL GIFT STAMPS**

Wrigley Country Churn  
**Butter**  
Stock Up and Save! "AA" 93 Score Farm Fresh 1-lb. ctn. in qtrs. **69**¢

Morton Frozen  
**Pumpkin Pie**  
**SAVE 10**¢ Family size pie **39**¢

**\$44,000 IN PRIZES  
PLAY MARKO**

CKLW-TV Thursday 9 p.m. to 10 p.m.

**Wrigley**  
SUPERMARKETS