

Fix Up Your Home Now For The Holidays

at Federal Hardware Supply you will find the finest brands of home improvement equipment and a staff of experienced salespeople to assist you with any problem.

No more **Tug O' War**
with Draperies!

Eastern Duotrax
TRAVERSE RODS

Only Eastern brings you Duotrax! That means two entirely separate tracks carry the right and left draperies... nylon slides never cross two thick... never stick, never jam! Flat top makes them ideal for ceiling installations.

30" to 47", reg. 3.95	\$2.89
47" to 80", reg. 6.95	\$4.89
80" to 140", reg. 8.95	\$6.89
140" to 200", reg. 10.95	\$7.89
200" to 240", reg. 12.95	\$9.89

Now! Built-in to your fireplace!
NO TOOLS NEEDED—NO HOLES TO DRILL SELF-INSTALLS IN 10 SECONDS NOW!

Recessed Meyerscreen*
With Pull Chain Traverse Curtain
Up to 50 inches wide, any height—any combination of finishes—material & workmanship unconditionally guaranteed.
ALL AT ONE PRICE bring us your measurements
Nationally Advertised at \$39.95 **\$29.95** And Many Other Styles to Choose From.

Firelighter
Hail and cast iron pot finished in black, cover and stone handle in brass.
Reg. 14.95 **\$11.95**

LOG BASKETS
Brass handle, feet and tray rim all solid brass.
Reg. 14.95 **\$8.88**

Graceful WOOD GRATE
The 1/2" square curved bars, of course, are cast iron. The square ends are open to take any length log.
20" \$10.95
24" \$11.95
28" \$12.95
32" \$13.95

LOG BASKETS
All black with brass handle 23" long, 18" wide. Reg. \$8.95 **\$4.88**

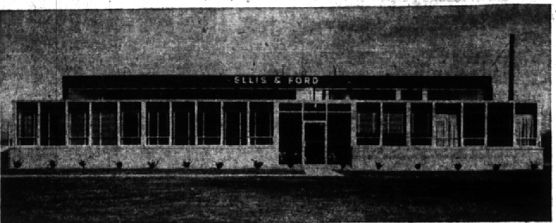
21" \$7.95
24" \$8.95
27" \$9.95
30" \$10.95
36" \$12.95

20" LOG GRATE
graceful design reg. 4.95 **\$1.98**

4 Piece Fireplace Tool Set
\$24.50 Val. **\$12.95**

FEDERAL HARDWARE SUPPLY
Formerly Federal by Merchandise Mart
SOUTHFIELD RD.
Open Fri. and Sat. Evenings
OPEN SUNDAYS, 10 A.M. to 4 P.M.

B U S I N E S S B R I E F S



Ellis & Ford Moves Into New Quarters
The Ellis & Ford Manufacturing Co. has returned to Birmingham after an 11-year absence. A new plant at 1100 Coolidge, just south of Maple, will house the company that first started in Birmingham in 1945 when William A. Hendrickson and an associate purchased the company. Two years later, another business was joined with the company and the whole operation was moved to Ferndale and then to Royal Oak because of expansion.

Local Couples Earn Vacations
Two Birmingham couples are among the 150 Michigan appliance dealers and their wives who are the Maple address, a director of this week. Mr. and Mrs. Gordon B. Smith, 4432 Far Hill, and Mr. and Mrs. Alexander V. Witbeck, 480 North Cranbrook, were the winners of a sales contest sponsored by General Electric Appliances Co. of Detroit.



Receives 5-Year Plaque
Robert Adams (right), 120 Hunter, was presented a bronze plaque in recognition of five years association with the Shell Oil company. The presentation was made by D. W. Nolf, Detroit district manager (left).

WELCOME WAGON
On the occasion of Change of residence
Arrivals of Newcomers to Birmingham
MRS. H. WALES PRICE
Midwest 4-0516
(No cost or obligation)

WILLIAM H. ARMSTRONG
Armstrong To Head Own Firm
The vice president and director of design at Harley Earl Inc. has resigned his post to form his own industrial design company, according to James Earl, president of the firm. William H. Armstrong will open offices in the Stevens building in Birmingham under his name and will specialize in product design. Armstrong, 4275 Orchard Hill, is married and has three children. He is a graduate of Pratt Institute and was with the Earl company for 10 years.

LEGAL NOTICES
Foster S. Hascall, Atty., Bridge Bldg., Birmingham 72,447

SUNHEAT FURNACE OIL
by the makers of Custom-Bleended Blue Sunoco Gasoline
Phone SUN OIL COMPANY
or your local SUNHEAT Distributor

CHURCH'S INC.
LUMBER
BUILDERS' SUPPLIES
FUEL
107 S. Squirrel Road,
Auburn Heights, Mich.
FE 2-9233

Color Photo Christmas Cards
This Christmas send **Folder Style Greeting Cards** with your favorite snapshots, black and white, or color as low as 9¢ and 27¢.
127 Gift Certificates in Christmas Folders. Only 1¢ from Redeemable equivalent—The Sun Black and White.
AT CAMERA
HITE PHOTO, INC. COUNTRY

Ellis & Ford Moves Into New Quarters

The Ellis & Ford Manufacturing Co. has returned to Birmingham after an 11-year absence. A new plant at 1100 Coolidge, just south of Maple, will house the company that first started in Birmingham in 1945 when William A. Hendrickson and an associate purchased the company. Two years later, another business was joined with the company and the whole operation was moved to Ferndale and then to Royal Oak because of expansion.

THE NEW two-acre site on Coolidge will house the pipe, fire hydrants, valves and other waterworks tools and supplies that will be shipped throughout the midwest. President Hendrickson, 2453 Radnor, revealed that the company has the largest stock of items for emergency repair of water main breaks in this section of the country.

The shortest distance between buyer and seller... employer and employee... landlord and tenant... is a Want Ad.

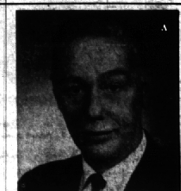
Woollenden Named Ad Director At Burroughs Corp.

A Birmingham man has been named advertising manager for Burroughs Corporation's international division. It was announced by Ray W. MacDonald, vice president.

George A. Woollenden, who has been with the company since 1960, will coordinate advertising programs for the company's 22 divisions and 53 dealer organizations abroad.

Woollenden was previously a supervisor of both dealer advertising and direct mail advertising production in the Burroughs division.

A 1938 graduate of Birmingham's Baldwin high school, he



GEORGE L. WOOLFENDEN
graduated from Washington and Lee University. He is a member of the Adcraft Club and Sigma Delta Chi, professional journalism fraternity.
His wife, Roberta, and their three children, David, Helen and Laura live at 409 Vinewood.

YOUNG LADIES' DAYS
Mon., Tues., Wed. by Appointment
HAIRCUTS Under 14 \$1.00
14 Years Thru 17 Years, \$1.50
donnell
HAIR STYLISTS
Federal 8-9639
With or Without Shampoo
1110 North 10th Street
Birmingham, Ala. 35203
Telephone: 8-9639

KARPET-KARE
YOU'RE A FINE ONE...YOU NEVER TOLD ME YOU HAD NEW CARPETS. HELEN...THEY'RE PERFECTLY LOVELY...SO FRESH AND NEW!

THANKS FOR THE COMPLIMENT, MARY. BUT THEY'RE REALLY NOT NEW, I'VE JUST HAD MY CARPETS PROFESSIONALLY CLEANED. THE KARPET-KARE WAY. AND WOULD YOU BELIEVE IT—IT WAS ALL DONE RIGHT HERE IN JUST ONE DAY, WITHOUT UPSETTING THE WHOLE HOUSE!

We know that you'll be delighted with **Karpet-Kare® Professional Cleaning**. Karpet-Kare was developed by famous **Bigelow Rugs and Carpets**. It's safe for all fibers and has a built-in, proven soil-retardant.

For further information, free estimate, PHONE LI 3-3552
CRESCENT CARPET CLEANERS

taxi?
call
BLOOMFIELD CAB
24 hr. service
ML 6-7171 MA 6-2877

OLDSmobility for '59 introduces the "Linear Look"...

SUPER IN STYLE...

SUPER IN ACTION!

See for yourself... Take the wheel of a Super 88!

One look at those sleek lines and you know there's a great new ride in Oldsmobile for '59! Smooth... quiet... and with the wonderful response of a great new Rocket Engine. There's a new look everywhere, highlighted by wide expanses of glass and the new Vista-Panoramic Windshield. Come in for a test-drive now!

DISCOVER THE ADDED VALUES IN OLDSMOBILE FOR '59
SEE YOUR LOCAL AUTHORIZED QUALITY DEALER NOW!

SUBURBAN MTRS. CO., INC.
— VISIT THE OLDS EXHIBIT AT THE DETROIT AUTO SHOW, DETROIT ARTILLERY ARMORY, NOVEMBER 22-30. —

565 S. WOODWARD