

5 X 7 Gift Enlargements
in Handmade Studio Folders or
Christmas Folders with Envelopes

from
BLACK & WHITE
NEGATIVES

Only **33¢** AT ALL
CAMERA
COUNTERS

Served by
HITE PHOTO, INC.

from
KODACOLOR
NEGATIVES

Only **98¢**

Ideal FOR
HOME, and
GIFT - GIVING

Campus News

**Local Students Pledge
At Albion and U of M**

Five hundred and twenty-five students became affiliated with 42 undergraduate social fraternities during the recently completed fall rushing period at the University of Michigan.

Birmingham and Bloomfield pledges were Archie Allen, 1798 Haynes, Sigma Nu; John Archangel, 1020 Midland, Beta Theta Pi; Robert Benson, 1240 Fairview, Delta Tau Delta; Richard Boyd, 969 S. Glenhurst, Phi Gamma Delta.

LIST CONTINUES with John Colman, 616 Puritan, Alpha Delta Phi; David Flusker, 1048 N. Cranbrook, Delta Kappa Epsilon; Stuart Gray, 382 Pilgrim, Phi Delta Theta; Gaer Guebert, 325 Argyle boulevard, Phi Kappa Psi; James Kearney, 4165 Orchard Way, Sigma Phi Epsilon.

Still others are Thomas Latta, 5751 N. Snowshoe circle, Sigma Nu; Barry Ludwig, 2969 Bradford, Alpha Tau Omega; John Power, 445 Arlington drive, Beta Theta Pi; Herbert Scheffine, 3384 W. Maple, Phi Kappa Tau; Dale Simons, 784 Wooddale road, Theta Xi.

Thomas Watson, Jr., 1320 Lathan, Chi Psi; David Westworth, 928 Covington road, Alpha Delta Phi; Tom Barber, 215 Martell, Sigma Nu; Fred Ellner, 4415 Pine Tree trail, Delta Tau Delta; James Bryant Ewing, 1490 Sodon lake, Sigma Nu.

Wheaton College's Homecoming

Barbara Knowlson of Chula Vista lane, Birmingham, attended the 36th annual Homecoming festivities at Wheaton college last week. Nearly 5000 Wheaton alumni from across the nation returned to the campus to visit friends and to spend a weekend participating in the activities of their alma mater.

Alumni breakfasts, open houses and coffee hours filled the Saturday morning slate. Election of alumni association officers, alumni buffet supper, and the student Homecoming program rounded out the day.

Barbara received her AB degree from Wheaton this year. More than 10,000 members constitute the Wheaton college alumni association, which is world-wide in representation.

Local Students at Kansas University

Three students from Birmingham are among the 9,241 attending the University of Kansas. Mitchell Foster, son of the M. E. Fosters of Radner drive, is a senior majoring in business.

A senior, Suzanne Pretz, daughter of the P. H. Pretz of Williamsburg road, is majoring in education. James Toussaint, son of the C. V. Toussaints of Crabtree lane, is a freshman majoring in engineering.

Full-Fledged College Students

Sunday will be long remembered by members of the Marygrove college freshman class as the date they were officially accepted into the ranks as full-fledged college students.

Birmingham girls entering Sacred Heart chapel between lighted candles held by their junior class big sisters were Judith Roma and Jacquelyn Powell. The candles are symbolic of the aid and guidance offered by the older students as the freshmen begin their college careers.

BIRMINGHAM

U-BUILD-IT STORE
(or we'll build it)

SHUTTERS — FINISHED — UNFINISHED
CABINETS — STOCK — CUSTOM
FURNITURE — IN — PARTS
PLYWOODS & HARDWOODS

Adjustable
Shelf & Bracket

1489 S. WOODWARD **MI 4-4490**
Next to Mills Appliances
Open 9 to 9 Mon. thru Sat.



Hostess-Secretary At Skidmore

SARATOGA SPRINGS—Serving as hostess at the recent dedication of a new dormitory at Skidmore college was Gwen Gallo, daughter of the M. E. Gallos of Birmingham. Gwen is a sophomore and a member of the art department.

Moore Hall, the new dormitory, dining hall, was formally dedicated on Oct. 25 and was named in honor of president Emeritus and Mrs. Henry T. Moore.

Cynthia Adams, daughter of the Carman Adams of Fairfax road, Birmingham, has been elected secretary-treasurer of her dormitory at Skidmore for 1958-59. A freshman, she is a liberal arts major.

Roberson Pledges

John Roberson of Riverside drive, Birmingham, has been pledged to Phi Delta Theta fraternity at Northwestern university. John is a member of Northwestern's Glee club. The group presented concert at Milwaukee-Dowder college on Nov. 7. They then went to Madison for the Northwestern-Wisconsin game on Saturday.

Honorary Members

Elizabeth Quilian Sime and James Pearce Johnson, both of Chesterfield road, Birmingham, have been elected members of Phi Beta Kappa, scholastic honorary fraternity. The elections represent one of the highest scholastic honors that a student can obtain.

Moore at Allegheny

Lynne Moore, daughter of Mr. and Mrs. W. L. Moore of Mayfair lane, Birmingham, was elected to Phi Gamma Mu at Allegheny college. A junior, she is in an international relations major.

Local Man Heads Campaign

Robert Wardrop, 4900 Beach road, Birmingham, will serve his second term as regional chairman of the Princeton annual Giving Campaign. The 1958-59 drive begins this month.

Manager of the Pittsburgh Plate Glass Co., Detroit, Wardrop is a member of the class of 1935. In addition he is a member of the executive board of the Detroit Area Council of the Boy Scouts of America. He is a director of the Brookside school, Cranbrook, and a trustee of the Society of Arts and Crafts in Detroit.

Approximately 2,000 Princeton alumni, working with 200 regional organizations in this country and abroad, class representatives and a non-alumni parent's committee will be working on the annual campaign.

Play at Marygrove

"Red Riding Hood", the all-time favorite of youngsters everywhere, will come to life on the Marygrove college stage Nov. 16 and 17, under the sponsorship of the college dramatic society.

GROVECREST MANOR
CONVALESCENT HOSPITAL and HOME

- Medical Staff
- 24 Hour Personalized Nursing Care
- Medical and Surgical Cases
- A Gracious Home for the Elderly
- Dignified Living
- Excellent Food
- State Approved
- Flexible Rates

Write or Call for Detailed Brochure

161 State Street **Federal 56096**
Pontiac, Mich.

SPECIAL

ALUMINUM COMBINATION STORM DOOR

1" thick. Full panel hinge. Vinyl weather stripping. Delivered only.

\$27⁹⁵ Plus Tax

ALUMINUM COMBINATION STORM WINDOWS

Removable inserts from inside. Fully self storing. Delivered.

\$9⁹⁵ Plus Tax

Storm Seal Co.

3074 ROCHESTER ROAD
1 Block N. of 16-Mile
8 A.M. to 6 P.M. Daily—
Even & Sunday MI 4-7643

MOST ELIGIBLE

for **ECON-O-CHECKS** (20 for \$250)

Like most homemakers, you are probably too busy to spend time running around paying bills by cash. What you need is the convenience of a checking account for household bills. Right? Right! Then **ECON-O-CHECKS** are tailor-made for you. In fact, for anyone who writes only a few checks a month and wants to maintain only a moderate bank balance. Here's why: For only \$2.50 you get 20 personalized checks, bound in a wallet-type, purse-size carrying case—plus a check register. AND, you pay no monthly service charge, no charge for deposits and no minimum balance is required. Isn't this the checking convenience and economy that you want? Many married couples find that an **ECON-O-CHECK** account plus a regular checking account is the ideal way to keep bookkeeping straight and budgeting simple. Ask about an **ECON-O-CHECK** account at any of NBD's 63 Detroit or suburban offices.

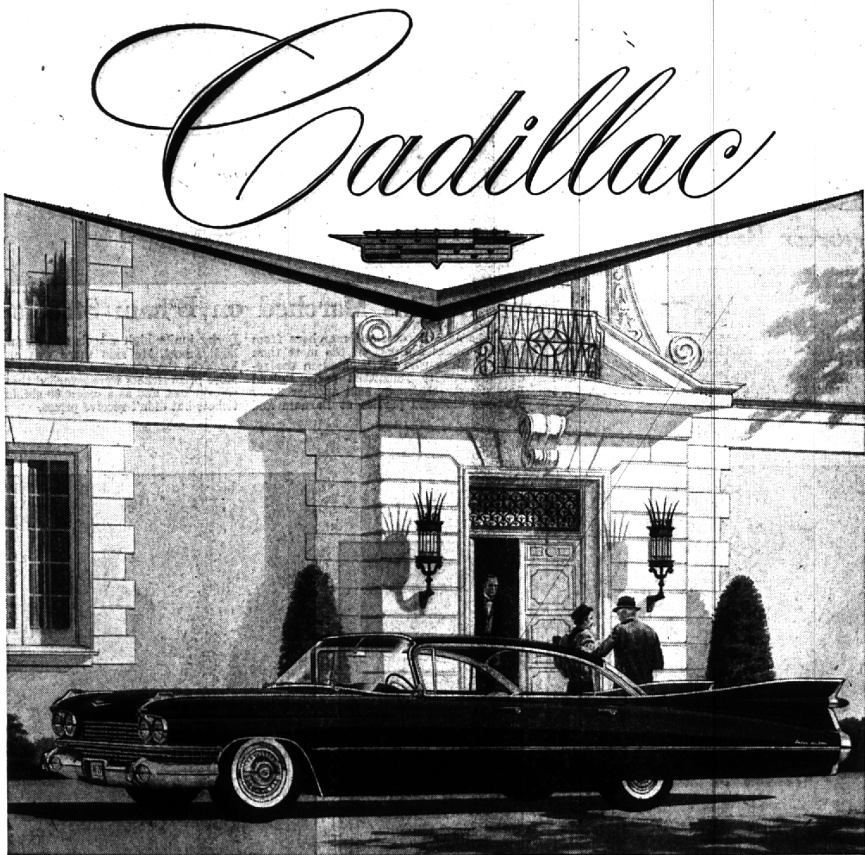
"I am calling
to say
THANK YOU
for your
vote."

Congressman
WM. S. BROOMFIELD

More friends because we help more people

NATIONAL BANK OF DETROIT

Member Federal Deposit Insurance Corporation
W. Maple and Cranbrook



Motordom's New Measurement of Greatness!

The American motorist has long since adopted his own personal technique for judging the year's automotive offerings.

He simply looks to the new Cadillac car to discover motordom's fullest measure of all that is new and good and wonderful.

And never before has Cadillac placed such a high standard of excellence on the world's motor cars as it has for 1959.

For the new "car of cars" has introduced a whole new concept of what an automobile can do and be... and how it should look and act.

To the eye alone, it is a revelation. Elegant, majestic, substantial, poised—it has brought a new magic and splendor to the world of motion.

Its Fleetwood interiors are marvels of advanced design. Appointments... fabrics... and leathers are beautiful beyond imagination.

The 1959 Cadillac is equally inspiring from behind the wheel. Its spectacular new engine, its advanced transmission and its new ease of ride and handling make a journey at its wheel the most glorious distance between any two points.

These Cadillac advancements have been interpreted in thirteen distinctive body styles—including a new Eldorado Brougham.

So if you contemplate the purchase of any motor car in the coming year, you owe yourself an early visit with this newest of Cadillacs.

Sixty minutes in the showroom and on the highway will give you a full understanding of the new way to measure greatness in a motor car.

The majestic new Cadillac for 1959 is now on display—inspect and drive it today!

VISIT YOUR LOCAL AUTHORIZED CADILLAC DEALER

WILSON PONTIAC-CADILLAC, INC.

1350 N. Woodward **Midwest 4-1930**

Every Window of Every Cadillac is Safety Plate Glass