

BUSINESS BRIEFS — Mr. and Mrs. William Mead, 3172 Oakhill, Troy, representing the Collection Service of Birmingham recently attended the Michigan Association of Collection Agencies' state convention in Grand Rapids.

Haroutune Berberian, 351415 Stearnwood, Southfield, and Mark H. Martin, 6172 Lantern, Bloomfield township, sales representatives for Prudential Insurance Co. have been admitted to membership in the firm's Northern Star club.

BUSINESS BRIEFS

City's Plant Employment Tripled from 1950 to 1956, Report Reveals

Manufacturing employment in Birmingham more than tripled from 1950 to 1956 although the number of plants in the city decreased, a manufacturing growth report by the Detroit metropolitan area regional planning commission reveals.

In 1950 the city had 41 plants and an employment of 331. The 1956 figure was 22 plants and 445 employees. In 1956 there were 25 firms in Birmingham with 1,010 employees.

Troy's number of plants and employees, meanwhile, skyrocketed in the six-year span. In 1950 Troy had 13 plants and 172 employees. The 1956 figure showed 24 firms and an employment of 4,215.

SOUTHFIELD was also grown in both plants and employment, from 54 firms and 937 workers in 1950 to 85 plants and 2,977 employees in 1956. The 1953 Southfield totals, however, were virtually the same as in 1950.

Bloomfield township in 1956 had one plant and three employees. South Oakland county has shown a steady growth. In 1950 there were 559 plants and 13,219 workers in the area. This figure grew to 716 plants and 26,325 employees in 1956.

At Chicago Confab
James P. Lowman, 931 Ridge-dale, Birmingham, was honored last week as a convention delegate in Chicago for leaders in Equitable Life Assurance Society's spring sales campaign.

LEGAL NOTICES

CITY OF BIRMINGHAM, MICHIGAN NOTICE TO PROPERTY OWNERS

PIKE SUBDIVISION, DEPART TO CHESTERFIELD

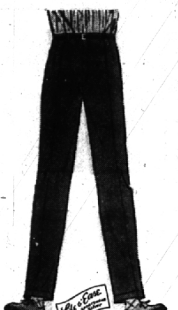
The City Commission of the City of Birmingham will meet Monday, June 2, 1958, at 2:00 p.m. in the Commission Rooms in the Municipal Building to consider any objections to the construction of certain improvements on Pike; and to the creation of a special assessment district created to defray the cost of construction of a special assessment bondy course of minimum thickness of one inch (1") on the existing concrete pavement on Pike, from Lakewood to Chesterfield.

The Commission proposes to create a special assessment district to defray the cost of this construction and said special assessment district shall consist of the following described property:

- Out Lot A
- Lot 86 to 215, inclusive
- 216 to 247, inclusive
- 248 to 274, inclusive
- 275 to 303, inclusive
- 304 to 317, inclusive
- 318 to 337, inclusive

Plans and estimate of cost of this project are filed with the City Clerk of the City of Birmingham for examination by the public. Individual assessments are not now available. They will be computed by the Assessor after June 2, 1958, if the necessary for improvement is established by the Commission and there will be another public hearing scheduled for the purpose of reviewing the creation.

IRENE E. HANLEY
City Clerk 11-12



WASH'N WEAR SLACKS

Dacron and rayon blends... light... airy... cool... comfortable and highly serviceable.

At the end of the day wash 'em—hang up to dry for 30 or 40 minutes and they're ship-shape ready for wear.

These Wash'n Wear slacks have the added advantage of superior tailoring and expert fit to make them look better longer.

Come in and try on a pair.

\$10⁹⁵
in Chargrey, Brown and Blue

PECK'S
MEN'S WEAR
108 S. Woodward
MI 4-7724

MJA Art Directors Win Honors

Eight gold and silver awards for excellence of advertising art have been won by art directors of MacMannus, John & Adams, Inc. Four of the awards, annually bestowed by the Art Directors club at Wayne university art center of Detroit, were made to Arthur

Obrosky, Rochester, and two to Thomas H. Roberts, Romeo, for their work on Dow Chemical Co. advertisements.

Vernon W. Isbell, Royal Oak, received an award for work on the Cadillac motor car division account and Charles E. Dickinson, Jr., 1675 Graefield, Birmingham, for a United Foundation advertisement.

THE AWARD-winning work will be displayed in the 10th annual exhibition of Michigan advertising and editorial art and design through June 5.

May 29, 1958 THE BIRMINGHAM (MICH.) ECCENTRIC 3-5

Attends Conference
Robert E. Cook, 1708 Winthrop, Birmingham, branch manager for Business Men's Assurance Company of America, attended a central states sales conference of the firm Sunday and Monday in French Lick, Ind.

Enjoy the Holiday
If you are going away for Memorial Day, **DRIVE CAREFULLY**
See us when you return.

Take advantage of our **23rd Birthday Prices** on any furniture you need for any room in your home

DON'T FORGET FATHER his day is coming soon

You can pamper Pop with a Comfortable Chair

ONCE A YEAR BARGAINS

HI-WAY FURNITURE MART
1532 WOODWARD AVE. BIRMINGHAM, MICH.
4 BLOCKS N. OF 14th BLVD. Midwest 4-1410

CHARGE IT 30-60-90 days—Budget Terms to 24 mos.

LINOLEUM

For... **REPLACEMENT or NEW INSTALLATION**

Complete Selection of Nationally Advertised Brands

EXPERT WORKMANSHIP

FREE ESTIMATES

T. E. HOGAN CO.
2865 Woodward Ave., 3 Bks. S. of 12 Mile
Open Fridays to 9 P.M.
LI 4-5300

Singer Sewing Center

USED MACHINE CLEARANCE

Electric Portables as low as **\$14⁹⁵**

Electric Consoles as low as **\$19⁵⁸**

Current Model Automatic **\$189⁹⁵**

COME SEE — COME SAVE!

177 W. Maple MI 4-0050

feather heather®

a SELFCAIRE® Wash and Wear Fashion by **HASPEL**

shows its colors in new business wear shades

Here are the new, darker, deep-mellow shades in wash and wear suits, especially created by Haspel for business... in Feather Heather, the rich, cover-type fabric. This is a unique blend of 45% Dacron® and 35% Cotton, with all the remarkable Selfcaire attributes. The freshness remains intact, through the hottest days, and when it is soiled, you just dip it in suds, rinse and hang to drip-dry as smoothly as if it were pressed. Ironing is seldom needed. Come in and see our new Feather Heather suits, tailored by the people who know the most about wash and wear fashions.

\$39.75

HASPEL ALL COTTON CORD \$29.75

Dickinson's
Waback Building Birmingham Saginaw at Lawrence Pontiac

Summer and Camp Needs

A "Must" for Every Girl Camper

RAIN COATS \$4.98 with hood

Washable Cotton **PAJAMAS \$2⁹⁸ to \$3⁹⁸** Fancy and plain colors. From Size 6 and up.

We carry a complete line of official **Girl Scout and Brownie Camping Apparel**

SWIM WEAR Assorted colors. Wide size range. **3.98 to 7.98**

SHORTS, PEDAL PUSHERS Plain colors and plaids. All sizes. **3.50 to 5.98**

GIRLS' BLOUSES Ship 'n' Shore cotton. Mostly plain colors. Sizes 6 to 14. **2.50 to 2.98**

LEVIS Sizes 23 to 32 **\$4³⁵**

GIRLS' T-SHIRTS, JANTZEN Cotton in white and colors. 7 to 14. **1.79 to 2.98**

CARTER'S COTTON PANTS In white only. Large range of sizes. **69c 85c**

Miscellaneous Camp Needs
Dark Grey & Green Warm **BLANKETS 7.98**
Cotton Cot **SHEETS 1.98**
PILLOW CASES 69c
TOWELS 49c and 1.00
WASH CLOTHS 19c and 1.00
GIRL'S SOX 45c Up
COTTON SWEAT SHIRTS 2.98
GIRL'S SWEATERS 5.98 Up

PLASTIC SHEETING
36" — 39c
54" — 59c

NAME TAPES

Shop Now While Assortments Are New and Stocks are Complete

F J M **McHolland company**
233 N. WOODWARD AVE.
CAMPING HEADQUARTERS FOR OVER 35 YEARS