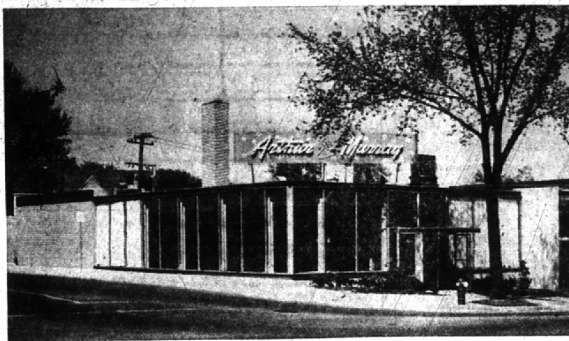


# BUSINESS BRIEFS



## New Dance Studio

Arthur Murray's new Birmingham dance studio, 305 N. Woodward at Willets, held its grand opening last weekend. The new location features a large main ballroom equipped with a stereophonic hi-fidelity sound system. Mr. and Mrs. Roy A. Dodge, are the studio's directors.

## Sherman Promotes Lathrup Resident

Appointment of H. F. Froehlich, 19191 Glenwood, Lathrup, as group manager responsible for the manufacturing, engineering and purchasing-production control departments of Sherman Products, Inc., Royal Oak, has been announced. He has been manager of purchasing and production control since March 1957.

Before joining Sherman Products, Froehlich was purchasing agent for the tractor and implement division of Ford Motor Co. He has also been a buyer for Packard Motor Car Co.

**WASHABLE RUGS**  
Up to 50 lbs. washed and dried  
One Day Service

**FLAT WORK IRONED**  
One to Two Day Service

**BIRMINGHAM LAUNDROMAT**  
1000 S. Adams MI 4-8225

5395-5400 DIXIE HWY.  
WATERFORD — OR 3-1225

**ELLIOTT UPHOLSTERING**

Creators of Fine Living Room Furniture  
VISIT OUR NEW SHOWROOM  
TABLES — LAMPS — CARPETS

Open Evenings by Appointment ELLIOTT FURNITURE

**REWEAVING**

All Methods — Clothing & Sweaters  
We do our own work. (Precision Weavers)  
ALL WORK GUARANTEED

LI 1-8580 *F.J. Smith* Open Friday until 9 p.m.  
Other days until 8

CUSTOM TAILORS  
104 W. 4th St., Main Professional Bldg., Suite 204  
Royal Oak

**NEW! bleaching machine by "Westinghouse"**

- Cuts time in half
- Silver blonding, 1 hour or less
- Tinting, 15 minutes
- Leaves hair in better condition and comfortable
- Costs no more

**west bros hair stylists**  
MIRACLE MILE Open 9 to 9 FE. 4-0549

**TRUCKS HELP MAKE IT SO**

Whether it's Michigan's wonderful water resources or her great education facilities—twin themes of this year's Michigan Week—the benefits to the people are more far-reaching because of motor transport. For trucks are indeed Michigan's supply lines, transporting everything we eat, wear, or use to every corner of the State—enabling her people to live, shop, do business wherever they please, opening new horizons to new generations . . . Next time you see a truck on the road, remember—it's working for you, serving you, too, so you can say, "It's great to live in Michigan!"

**Michigan Trucking Association**  
Fort Shelby Hotel • Detroit

WHEN YOU ARE YOUNG it takes less to provide for a secure future. Start your Life Insurance plan NOW at the low rate in effect for your present age.

**THE MANUFACTURERS LIFE INSURANCE COMPANY**

1880 Penobscot Building, Detroit 26  
W. M. Milligan, C.L.U., Branch Manager  
Telephone: WOODWARD 1-3191

2842 W. Grand Blvd., Detroit 2  
Richard W. Schmid, C.L.U., Branch Manager  
Telephone: TR 6-3250

Birmingham Representatives:  
David K. Falvey, C.L.U., C. T. May

**BE OUR GUEST**

... we will be happy to furnish soft water service to your family for 15 days at absolutely no cost or obligation.

... THEN YOU WILL KNOW WHY OVER 2500 FAMILIES IN THE BIRMINGHAM AREA ENJOY THE ADVANTAGES OF

**SERVISOFT**  
SOFT WATER SERVICE

Nothing To Buy . . . No Work To Do

**15 DAY FREE TRIAL**

243 BRIGGS BLDG., B'HAM Midwest 4-4334



## Honored in London

George D. Scott (right), 561 Rudgate, Bloomfield Hills, was honored recently by delegates to the international air cadet exchange planning conference in London, England. Scott, a vice-president of Ex-Cell-O Corp. and H. Glen Bixby (second from right), Ex-Cell-O president, talk with Air Marshal Sir Douglas MacFadyen (second from left) of the Royal Air Force and Jack Townsend, manager of Ex-Cell-O's Leicester, England, plant. Scott and Bixby were presented a scroll praising Ex-Cell-O for its efforts in supporting the international air cadet exchange.

## Joins Sales Staff

Clinton R. Clark, 604 Hanna, Birmingham, has joined the Detroit sales staff of The American Weekly. He formerly served with the J. Walter Thomas Co. and prior to that with Kenyon & Eckhardt and Chrysler corporation's Dodge motor division.

## On Sahlin Board

John W. Deland has been elected to the board of directors of Sahlin Engineering Co., Inc., 750 W. Maple, Troy.

## LEGAL NOTICES

**CITY OF BIRMINGHAM, MICHIGAN NOTICE OF SPECIAL ASSESSMENT**

**NORTH WOODWARD ACCESS DRIVE, EAST SIDE**

Notice is hereby given that the special assessment will heretofore made by the Assessor for the purpose of defraying the cost of construction of an improvement to be hereafter known as North Woodward Access Drive—East Side consisting of an access drive of an access drive immediately abutting a portion of Lot No. 12, TRACT OF PROPERTY OF COMMERCER STREET PAVING, The City Commission of the City of Birmingham, to be known as the Commercial Street Paving, will meet in the Commission Room of the Municipal Building in said City on Monday, the 24th day of May, 1958, at 8:30 p.m. to review said assessment at which time and place opportunity will be given to all persons interested to be heard.

IRENE E. HANLEY, City Clerk.

May 15, 1958. (10-11)

**CITY OF BIRMINGHAM, MICHIGAN NOTICE OF PROPOSED CONSTRUCTION OF COMMERCER STREET PAVING**

The City Commission of the City of Birmingham will meet Monday, May 25, 1958, at 8:30 p.m. in the Commission Room of the Municipal Building to consider any objections to the construction of certain improvements described herein, and to the creation of a special assessment district to defray the cost of construction of an improvement to be hereafter known as COMMERCER STREET PAVING consisting of construction of a 24 ft. 9"-1'-9" concrete pavement with integral curb on Commerce Street from Lincoln to Cule.

The Commission proposes to consider any objections to the construction of this construction and any special assessment district shall consist of the following described property: Sheffield Estates No. 1 Subdivision Lots 510 and 512 Assessor's Plat No. 28-B Lot 26 and Lot 27, East 124 1/2 ft. of Lot 26

There are no detailed plans or estimates of cost on this project available, and individual assessments will not be computed until after such estimates have been prepared. They will be computed by the Assessor after May 26, 1958. If the necessity for this improvement is established by the Commission, and there will be another public hearing scheduled for the purpose of reviewing the assessments.

IRENE E. HANLEY, City Clerk.

May 15, 1958. (10-11)

**COLOR PHOTO FINISHING**  
Fine Quality and Service  
KODACHROME  
KODACHROME  
EKTACHROME/ANSICOCHROME

Dated Black & White SuperSnap Prints

1100 N. BRIDGE ST. BIRMINGHAM, ALA.  
**HITE PHOTO, INC.**  
SOLE LEADING DEALERS

**Corning's**

**GOURMET — BUFFET**

Prime Rib of Beef — Lobster Bisque

- merchants' lunch • dinner • supper
- CHAMPAGNE • Cocktails

Endorsed by the Epicurean Circle, Diners Club, Gourmets' Guest Club

LI 9-2252 "Take-Home" Service  
Woodward Ave., Near 13 Mile



**Fox & Hounds Inn**  
John Ingleson, Proprietor

Woodward Avenue in Bloomfield Hills  
**LUNCHEONS and DINNERS**  
Sunday 1:30 p.m. to 9:00 p.m.  
Monday through Saturday, 11:30 a.m. to 11:00 p.m.

COCKTAILS SELECTED FOODS

Phone MI 4-1800 for Reservations

**Carrie Lee's Tea Room**

Custom Cuisine  
Chinese and American  
Exotic and Delightful  
Cantonese Family Style Dinners  
CHILDREN'S ORDERS SERVED

Special Attention Given to Carry-Out Service  
Enjoy our Chop Sueys and Chow Meins leisurely in your own home

Reservations accepted  
Call: Midwest 4-9623  
Midwest 4-7576

Open 11 a.m. to 10:30 p.m. daily  
Saturdays 11 a.m. to 1 a.m.

856 North Woodward Birmingham

**DINING At Its Distinctive Best**

- Luncheon
- Dinner
- Cocktail Party
- Banquet
- Meeting

**The Kingsley Inn**

WOODWARD AT LONG LAKE ROAD  
Bloomfield Hills, Mich.  
Midwest 4-1400

**PRIVATE DINING ROOM**  
for clubs, weddings and just any occasion  
SEATS UP TO 160

FEATURING: Pizza, Barbecue Ribs and Chicken, Seafoods . . . AND A COMPLETE MENU including steaks, chops, spaghetti, etc.

**PAGO'S RESTAURANT**  
2717 Coolidge  
Lincoln 1-1770

**Chinese AND American Foods**

**Pearl's Garden**

OPEN 7 DAYS A WEEK  
11 A.M. to 10 P.M.

LUNCHEONS 7:30 up  
DINNERS 1:25 up

FAMILY DINNERS  
Chintown Style Welcomed  
CARRY OUT ORDERS

OPEN SUNDAYS

Phone MI 4-2913  
469 S. WOODWARD  
BIRMINGHAM

**Where The Gourmets Gather**

**EXOTIC DINING**

Famous for the best in chicken, steak and sea food.  
Plump young chicken "Truly Southern Fried" to a juicy golden goodness, served individually or family style.  
"Our dinners include everything cep'n dessert because we don't think you'll have room for it anyway, but in case you do we have the best apple pie in de country!"  
Exquisite Cuisine . . . Private dining rooms for parties or conferences . . . Service . . . Service . . .  
AUNT FANNY'S, 224 Woodward (about 12 1/2 Mile) Lincoln 7-2611.

**BARBECUE RIBS**

Barbecued ribs, carefully selected . . . and skillfully prepared with a special barbecue sauce which is retained in the meat. Eat in or take out: Food, Beer and Wine.

The BLOOMFIELD HILLS BARBECUE is located in Bloomfield Hills, 1620 Woodward Avenue, at Long Lake Road. Midwest 4-9099.

Open daily 7 a.m. to 2 a.m.  
Sunday 8:30 a.m. to 2 a.m.

**BEEF BUFFET**

Aged prime beef—served buffet style—and tastefully served in its own natural juices and prepared to your order.

This is the specialty of Monahan's, but this "newly enlarged" friendly restaurant also has a reputation for excellent chicken, ham and seafoods, to mention just a few items.

MONAHAN'S is located in Birmingham at 675 E. Maple Road. Open Daily and Sundays 11 a.m. to 8 p.m.  
MI 6-6188

**FRIENDLY ATMOSPHERE**

GREENFIELD'S SUBURBAN, on Hunter Blvd. in Birmingham, satisfies a cherished need for people of good taste.

Variety . . . Time-tested, time-honored recipes—the favorite dishes all America loves and enjoys—are a prominent feature of Greenfield's Suburban menu. Yet the variety of foods offered, every day, is so wide that one could eat three meals daily at Greenfield's for many a day without repeating a dish!

Hours of service are from 11 a.m. to 9 p.m. daily and Sunday.