



**GUNITE SWIMMING POOLS**

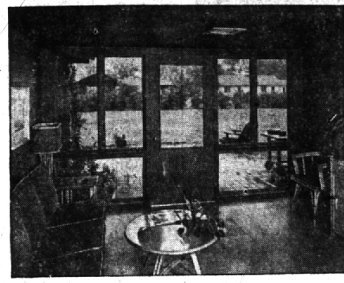
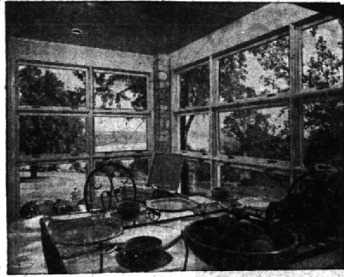
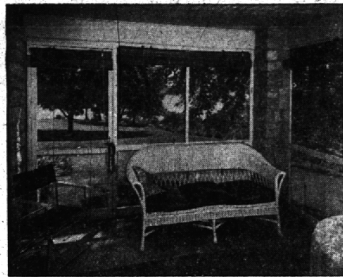
30 years' experience our guarantee  
ALL SIZES • ALL SHAPES

12' x 28'  
Kidney or Oval Shaped  
COMPLETELY INSTALLED  
**\$2995**

PRICE INCLUDES

- Filter
- Skimmer
- Underwater Light
- Pool Ladder
- Leaf Skimmer
- Wall Brush
- 3 Plastic Floats
- Test Kit
- All misc. fittings
- Excavation and Dirt Removal

Complete Modernization Service  
**LaPointe Building Co.**  
2415 E. 7 Mile Rd. Detroit 34  
TW 3-5934



**Windows Make the Difference**

The proper use of windows can make a big improvement in your home. The fine family porch (top left) was unusable many months of the year because it was open to wind and rain. After enclosure with window units (top right), the owner has a year-around room that proves a family favorite. Within the breezeway (bottom left) there was

plenty of shade, but it, too, was unusable much of the year, and was occasionally an eyesore. Now (bottom right) there's lots of extra space for family activities, a view of a pleasant yard, comfort and protection from the weather 10 months of the year.

Why you shouldn't use windows the way you've always wanted.

THE FINAL WAY to use windows is in the remodeling of existing rooms. Thousands of kitchens will be modernized next year. And the pleasantest of them will have plenty of windows.

Many a dark and stuffy living room can be turned into a really livable room by the installation of

pool owners are you ready?

PHONE FOR FREE POOL MAINTENANCE GUIDE!

nelson CHEMICALS CO. 12348 Schaefer Hwy. Detroit 27, Michigan WE 3-1500

**LAWN-BOY DELUXE**  
For easiest going... Smoothest mowing... on any lawn



Lawn-Boy Deluxe 21" Model  
**\$99.95**

Lawn-Boy Deluxe 18" Model  
**\$89.95**

All these LAWN-BOY features give you the smoothest lawn in town! Activated Pilot Wheel keeps the cutting plane level even over dips and hollows. Eliminates scalping and tipping. Easy one-pull starting saves you time, fuss and bother. Recoil starter with cord. Aluminum light, aluminum strong, LAWN-BOY Deluxe goes easily uphill and down. Maneuvers with jack rabbit agility. Turns on a dime. And look at these other LAWN-BOY features: wash-off, hang-up design, low front deck and side mounted engine for securing under bushes, close trimming, easy wheel-height adjustment, balanced power engine, self-cleaning discharge chute, and giant muffler.

OPEN SUNDAYS 10 A.M. - 2 P.M.  
**The Birmingham Hardware**  
152 N. WOODWARD MI 4-7524  
"WE'RE AS NEAR AS YOUR PHONE"

**Right Use of Windows Points Way to Extra Room in Many Different Parts of the House**

There are a number of improvements to your home where the use of windows will give you an extra room you've always wanted... and economically, too.

Do you have a porch or a breezeway. Then here is a fine way to get a pleasant extra room. Enclose it with modern

Even without heat enclosure will give you two or three months of extra use in the spring and fall.

Enclosure will keep out dust and rain, so you can keep this new room clean and furnish it with better furniture. Usually a porch or breezeway is easy to heat, so it is a very economical way of getting a cheerful extra room for the whole year.

PERHAPS THE SECOND most popular use of windows in remodeling is to turn an unused attic into living space. Here windows will frequently make the difference between livable and unlivable rooms... for even with good insulation

**BIRMINGHAM CAMERA SHOP**  
168 So. Woodward  
Phone Midwest 4-0510  
If You Don't Know Cameras—Know Your Dealer  
10TH YEAR SERVING BIRMINGHAM

**Lawrence E. Smith**  
Landscape Design and Construction  
135 N. WOODWARD  
in the Wilson Building  
Phone MI 4-2835

Patented **CRIMSON KING MAPLES**  
7' Tall **\$6.95**

**TAXUS CUSPIDATA**  
(Spreading Japanese Yews)  
Real Fall-18" Spread THIS WEEKEND ONLY **\$3.95**

**HEMLOCK**  
Real Bushy & Full Up to 2 Ft. Tall  
Your Choice **\$2.95**  
While They Last

**PURPLE LEAF PLUM**  
5 Ft. to 6 Ft., in Leaf **SPECIAL \$1.95**

**FLOWERING SHRUBS**  
5 in a Bundle **\$1.49** Bundle

Large Assortment of **PERENNIALS** 3 for **\$1.00**

Full Line of **ANNUALS**

**RED BUD TREES** **\$3.95**  
Up to 6 Ft., in Flower

BEAUTIFUL **AZALEAS** Freshly Dug  
In Bud—Ready to Flower EXTRA LARGE PLANTS **\$3.95**

COMPLETE ORTHO LINE OF INSECTICIDES & FUNGICIDES

**ROSE TRELLIS** from **\$1.39**

**ROSES NO. 1**  
From **\$1.50**

**HYBRID TEAS FLORIBUNDAS CLIMBERS**

**GRASS SEED**  
KENTUCKY BLUE, 5 lbs. \$4.35  
PERENNIAL RYE, 5 lbs. .99c  
PURE MERION BLUE, lb. \$1.39  
CREEPING CHEWINGS FESCUE, 5 lbs. \$3.75

**FERTILIZER**  
STADLER XXX AGRICO COW, SHEEP MANURE SACCO

WE CARRY A COMPLETE LINE OF SCOTT'S LAWN CARE PRODUCTS

Bring a Photo or a Sketch of Your Home for Free Landscaping Advice. We Maintain a Complete Planting Service.

OPEN EVERY DAY 8 A.M. to 9 P.M.

**BERKLEY NURSERY SALES**  
2626 COOLIDGE (at 1 1/2 Mile) BERKLEY, MICH. LI 6-4200  
17807 W. 7 MILE DETROIT, MICH. KE 7-2223

Keep Dust Down... At Low Prices  
By Calling  
**David Road Oiling Service**  
LI 4-5328

Remodeling Notes:  
**See Our Beautiful Glass & Aluminum FRONT Door!**

New lower prices on **Scotts® GRASS SEED**

Scotts costs less per lawn because you need so little of this all-perennial, 99.91% weed-free sure-growing seed. Choose Scotts in the brand that best suits your need.

**PICTURE BRAND** dress-up lawn 500 sq ft \$1.75 2500 sq ft 8.50  
**FAMILY BRAND** good looks, good wear 750 sq ft 1.45 1250 sq ft 6.95  
**PLAY BRAND** quick, sturdy lawn 125 sq ft 1.00 625 sq ft 4.75

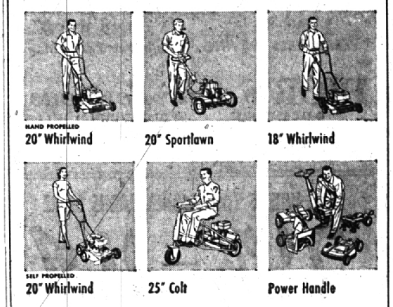
It pays to fertilize when you seed. New TURF BUILDER pays best, is good insurance for quicker sod.

**BUSINESS AS USUAL**  
While Remodeling to Make Us **BIGGER AND BETTER THAN EVER**  
**HUSTON HARDWARE CO.**  
Birmingham's Oldest Hardware Store  
205 N. Woodward Hours: 8 to 5:30 MI 4-7330 Friday, 8 to 9 p.m.

a wide picture window. But no matter what type of room improvement you are planning, remember that the windows are as important for all-around beauty, enjoyment and satisfaction as any other element.

**We Rent Most Everything**  
TOOLS, Garden and Power, etc.  
PARTY NEEDS  
HOSPITAL EQUIP., etc.  
**RENT IT, Inc.**  
1706 S. Telegraph FE 4-3545

**POWER LAWN MOWERS**  
Sharpening and complete service on all  
**ARROW SAW & TREE SUPPLY CO.**  
30747 Greenfield at 13 Mile Midwest 6-2800



**TORO builds the right power mower for your needs!**

Come in and see the new Toro power mower! Reed or rotary... push type, self-propelled or riding... small, medium or large—we'll be glad to show you the right power mower for your needs. You choose from the world's most complete line when you let us help you choose a Toro.

Remember, before you buy any "bargain-priced" mower, see what you get from Toro. Compare all the extras for yourself! You'll be glad you did. (We'll be happy to arrange easy payments when you find the Toro that's right for you!)

- Every machine purchased at Damman's gives you these extra plus features.
- All machines completely set up and tested.
  - Free Trial!—If in 10 days you are not completely satisfied, you may return it for a full refund.
  - Full year guarantee covering parts and labor.
  - Factory authorized service & parts.
  - Free delivery.
  - Budget terms.
  - Free sharpening and adjustment next spring.
  - All new Deluxe 1958 Models.

**A. L. DAMMAN HARDWARE**  
4066 West Maple MI 6-0111

FOR THE ULTIMATE IN SUMMER LIVING LET **Restrict** HELP YOU PLAN YOUR PATIO

Redwood  
**PATIO ENCLOSURES**  
IDEAL FOR SCREENING

30" x 96" \$5.00  
38" x 96" \$6.00  
54" x 96" \$7.00

READY TO ASSEMBLE  
Be sure to see these attractive panels at our ETON STORE

**PATIO BLOCKS—7 Colors—3 for \$1**

GOOD CLEAN BOARDS for RANCH TYPE FENCES

Complete Material for 100 ft. of  
**48" CHAIN LINK FENCE**

Here's What You Get...  
• 100 FT. CHAIN LINK WIRE  
• 7 FT. PLAIN POSTS  
• 100 FT. (2 x 4) TOP RAIL  
• NAILS  
• STAPLES  
• WOOD PRESERVATIVE for POST BOTTOMS

**\$5700** ALL FOR IN 100 FT. QUANTITIES

**METAL CLOTHES POSTS \$4.95 ea.**

**PRE-CAST CEMENT STEPS**

**REDI-MIX CEMENT**

Enjoy the Beauty and Charm of **LOUVERED DOORS**

For Room DIVIDERS WARDROBES

15' x 80" x 1-3/8" **\$775 ea.**

**BEFORE you remodel...**

See the full line of Armstrong Ceilings. 5 new ceilings to choose from. New styles, colors, designs. Easy to install.

**BUDGET and FHA TERMS**

Call MI 4-5300 For Fast Delivery

**Restrict** LUMBER COMPANY Since 1884  
425 S. ETON South of G.T.R.R. Depot, Birmingham