

EXTRUDED ALUMINUM COMBINATION STORM WINDOWS AND SCREENS

BE UP TO DATE FOR '58!
See Our New ALL WHITE Windows and Doors

Glass and Screening replaced in any Make Door or Window

All Aluminum Extruded Combination

DOORS INSTALLED \$39.95
COMPLETE

INCLUDING HARDWARE AND SUB-FRAME

SPRING ENCLOSE THAT PORCH NOW!
SALE! • Screens • 4" or 7" Jalousies • Aluminum Combination or Awning Windows

AWNINGS ALL STYLES

FOR WINDOWS AND PATIOS

GET TWO ESTIMATES

BE SURE ONE IS OURS!

We take great pride in enjoying 25 years of quality workmanship in the above projects.

MAY OUR COURTEOUS REPRESENTATIVES HELP YOU?

30 Months to Pay No Down Payment Free Home Demonstrations

LI 2-7257 LI 2-7668

Even. and Sundays LI 4-8441 LI 3-4233

Corbin Window Co.

2531 JOHN R. MIDWAY HEIGHTS

Between 10 and 10 1/2 Mile Roads



Want Ads cannot be accepted after 5 p.m. each Tuesday

MAY MIX-UP

1. MINIATURE ROSE BUSHES: They are hardy, grow in or outdoors, 8" high, treated just like regular tea roses. Red, pink or white. \$1.79 each. (Very few left, honestly).
2. Water peonies plentifully to fill out buds.
3. Sow most flower seeds AFTER May 10th.
4. Plant DAHLIAS when ground is fairly warm. Also, divide clumps carefully. Those with broken necks won't grow any better than a rabbit with the same thing broken.
5. When planting GLADIOLUS soak the corms for 1/2 to 1 hour in a lysol solution. (4 teaspoonfuls to a gallon of H₂O) and plant immediately. When plants appear dust them once a week with NEUDUST (5% DDT).
6. A wonderful new BULB PLANTER is now available... something we have been looking for for some time. It has long handles and costs a piddling—\$5.45.
7. Divide or plant SHASTA DAISIES now.
8. CRABGRASS PREEMERGENCE CONTROL in the form of 72% CHLORDANE should be applied NOW... before MAY 10th.
9. BULBS to be planted outdoors or started indoors for later planting outdoors are: (and we happen to have them)—CANNA LILY; AURATUM; GURJUM; CENTIFOLIUM LILY; CALLA LILY; ISMENE CALATHINA (Peruvian Daffodil); TUBEROSE (Double Dwarf Pearl); GLADIOLUS; BEGONIA (Double Camellia-Flowered); GLOXINIA; DAY LILY (Hemerocallis); DAHLIAS (Large Flowering and Pompon); additional LILIES such as MID-CENTURY HYBRIDS, TIGRINIUM, UMBELLATUM, etc.
10. A lovely, sturdy 2-wheeled monster that easily carries two garbage cans or two bushel baskets or other containers or any variation of two of the things you have (and which fit)... \$21.95.
11. Be sure to cut off the flowers of tulips, daffodils, narcissus, etc., as soon as they wilt in order to build better bulbs for next year.
12. Sand-box sand-flat, washed sand that makes the nicest castles. \$1.00 a 100 lbs.
13. Sow gourds now (the seed, you know) if you like gourds. You can't eat them.
14. WEED-B-GON, a combination of 2, 4-D and 2, 4, 5-T is about the best for all broad-leaved weeds. Read the directions CAREFULLY.
15. Some lovely new stone BIRD BATHS are in (or should be) for our enjoyment. They will probably be with us for some time... in spite of the low prices.
16. AGRICO UREAFORM (10-6-4) lawn fertilizer will not burn the grass.
17. WOODRUFF'S GRO-SOD is still one of the best high organic nitrogen fertilizers. A bit of watering is advisable with this one.
18. Nothing has been said about turnips.
19. Swan's PRESSURE MESH hose has appealed to the author's desire to own a hose which won't strangle him when he takes it off the HOSE HANGER.
20. PATENTED & STANDARD ROSEBUSHES... Excellent plants.
21. Now we are up to 21 and haven't even scratched the surface. Why not come in or call us to get the best in material, equipment or advice... the outfit named in No. 23.
22. The following Pacific Hybrid DELPHINIUM plants are in: KING ARTHUR—Dark purple, white bee SUMMER SKIES—Light blue, white bee BLUEBIRD—Medium blue, white bee GALAHAD—White, white bee GUINEVERE—Pinkish lavender, white bee

All plants \$2.25 each

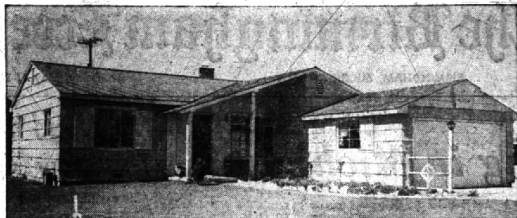
These are state inspected one year old plants.

McCLELLAN-BALL CO.

YARD GARDEN SUPPLIES FARM KENNEL

BIRMINGHAM, MICHIGAN

Phone MI 4-4133 850 S. Woodward



Red Cedar Enhances Appearance

Red cedar machine-grooved shakes great-ly enhance the appearance of a home. Many remodelers are finding the insulation value, economy and natural appeal of cedar the right answer for a beautiful facelift job. The shakes provide rich shadow lines for smart, modern appearance.

Storage House In Back Yard Solves Problems

For home owners with houses that have neither a basement nor an attic, a storage house in the back yard can solve many problems and greatly increase property values.

Built of 2 by 4 inch lumber framing and paneled with quarter-inch pressed wood, such a storage house is easily erected by the home owner. Size of the building depends on individual needs, but 12 feet square is recommended. A building this size will provide adequate room for storage plus room for a work area.

The framing is built on a concrete slab foundation. Rafter, studs and joists all should be 16 inches on center. The panels form the exterior covering with 4-penny nails spaced every 4 inches on the edges and 8 inches apart at the studs over the rest of each panel.

THE HARDBOARD panels also are used for roofing. Batten strips 2 1/2 inches wide set in asphalt cement cover the joints.

Interior of the house can be left with open framing or paneled with quarter-inch peg board or solid hardboard panels. Pegboard panels are recommended because they provide a place to hang nearly anything on the walls, leaving floor space open. Fixtures for the peg board are strong enough to take power-mowers and outdoor engines as well as rakes and shovels.

VENTILATORS should be built into the gables at each end of the building. The door is located at one end and windows at the other and the two sides.

Both the interior and exterior should be painted. For best results, a primer coat is applied first, followed by two finish coats of paint.

For A Swimming Pool You'll Be Proud To Own
STEELCRETE
GR. 4-3601

Lawn Mowers Sharpened

ENGINE TUNE-UP AND REPAIR
Fast, Efficient Service
MEL'S AUTO SERVICE
79 E. Maple Rd., Nr. Livernais
Phone JU 8-3292

SPRAYING

ELM TREES
Shade Trees, Shrubs, Fruit Trees and Orchards

Lawn spraying for weed control. Also spraying for mosquito control.

Michael J. Jasso
40 BILTMORE Phone Birmingham MUberry 9-2700



New... ONLY \$99.95 FULL PRICE

POOLE HARDWARE
MIRACLE MILE

FE 8-9618 • Parking for 5,000 Cars • Open 9 a.m. to 9 p.m.

LAWN FERTILIZING TREE ROOT FEEDING WEED KILLING INSECT CONTROL

WHY struggle with a starved, pest-ridden lawn infested with weeds, chickweeds, crabgrass and destructive insects? When it is so easy to eradicate them before they destroy your precious lawn grasses.



AGROSTOLOGISTS (Lawn Scientists) have paved the way for everyone to grow a beautiful, pest-free lawn, with modern materials and equipment to cope with every specific problem. The AGL-SPRAYER system does them all quickly, neatly and inexpensively. Old fashioned methods are passe' in this modern atomic age.

CALL US FOR CONSULTATION and FREE ESTIMATES

You'll be amazed at the low cost of a job well done.

FERTILIZE-BLOOMFIELD LAWN CULTURE
Lincoln 8-0171

BE OUR GUEST

... we will be happy to furnish soft water service to your family for 15 days at absolutely no cost or obligation.

... THEN YOU WILL KNOW WHY OVER 2500 FAMILIES IN THE BIRMINGHAM AREA ENJOY THE ADVANTAGES OF



... Nothing To Buy ... No Work To Do

15 DAY FREE TRIAL

243 BRIGGS BLDG., B'HAM

Midwest 4-4334

Lawns need constant care to give you lasting satisfaction and to continue to improve. They must be fertilized and watered regularly, mowed properly and kept clean of sticks, leaves and other debris, say Michigan State University lawn specialists.

Thousands of people read The Eccentric Classified Ads. So remember, if you want to sell that hard-to-get-rid-of article, advertise it in the Want Ad section of The Birmingham Eccentric.

Announcing NORTHLAND MOSQUITO CONTROL

Oakland County's First Service. Dealing Exclusively in Mosquito Abatement!

- Villages
- Association Areas
- Subdivisions
- Estates
- Residences
- Lake Property

FOR INFORMATION CALL EL 6-7468

SWIMMING POOLS

Built by experienced pool builders. Gunite construction, Hygeia filter, pump, underwater lights, diving board, and ladders.

Call LI 4-2002 (if no answer LI 8-5219) or write

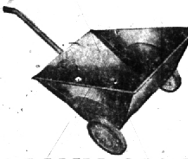
WONDERLAND POOLS

1978 Cambridge Berkley

Garden hoses PLASTIC HOSE

5 year guarantee

50 ft. \$1.77



LAWN CART

strongly built—rubber tired—nylon all-less bearing steel wheels.

Reg. \$6.95 **\$4.95**



20" Gemco POWER LAWN MOWER
regular 69.45 **\$42.88**

Pennsylvania Lawn Mowers

Rubber tired... self sharpening blades... ball bearing... as low as \$13.87

Powerful 2 h.p. Clifton motor with muffler. Easy cut starter, rubber tired self sharpening blades... strong steel chassis... will last a lifetime.

BAMBOO LAWN RAKE

99¢



LAWN SPREADER

Rubber tired wheels, adjustable steel handle with control. Regularly \$9.95

\$6.95



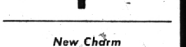
Long Handled DOO-KLIP GRASS SHEARS

Reg. \$1.25

\$3.49



Long Handled Digging Shovel Reg. \$2.95 **\$1.99**



New Charm For Your Windows

Costs So Little

MOVABLE INTERIOR SHUTTERS

At New Low Prices

Custom Made To Fit Your Needs

Open Sundays 10 A.M. to 4 P.M.

Southfield at 12 Mile Rd.

Open Thurs., Fri., and Sat. Eves.

EL 6-7300



LA 1-3500

EAST SIDE OPEN THURSDAY, FRIDAY AND SATURDAY EVENINGS TILL 9