

Local Reserve Ends Active Duty Phase

PORT BLISS, Tex.—Pvt. Patrick W. Crowe, 20, son of Mr. and Mrs. William N. Crowe, 1220 E. Long Lake rd., Birmingham, Mich., recently completed the final phase of six months active military training under the Reserve Forces Act program at Fort Bliss, Tex.

A 1936 graduate of the University of Detroit High School, he was employed by the A & T Tea Company before starting his RFA training.

You will find many bargains in The Eccentric Classified Columns.

ADD BEAUTY
TO YOUR KITCHENS & BATHROOMS
WITH
WALLCOVERING
Close-Outs
1956 - 1957

VALVAR

STAINPROOF WALLCOVERING
FOR KITCHENS & BATHROOMS

REGULAR \$3.25-\$4.50-\$6.50 PER ROLL

99¢ PER ROLL

While They Last

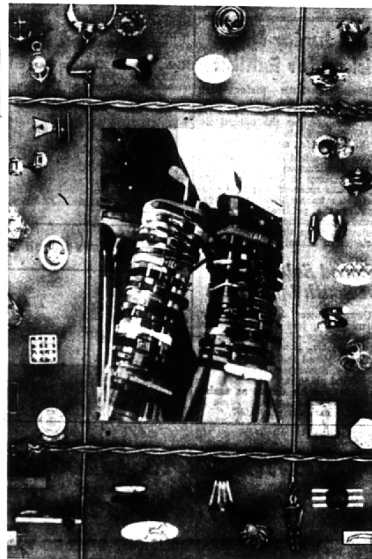
ACME

Quality Paint Store

"Color Is Our Business"

• Charge Accounts
163 N. Woodward

• We Deliver
MI 4-8500



Accessory Facts

Small but significant features of any man's outfit are his accessories—such as these new spring tie bars, cuff links, chains, and (inset) wide selection of belts.

Put Your Accessories Before the Fact, Men

Borrowing a term from legal lingo here is some advice: Gentlemen, put your accessories before the fact—or, to put it another way, don't think of your accessories—the jewelry, belts, wallets, handkerchiefs, etc.—as unimportant items in your wardrobe. No outfit is really complete unless these small but significant features are included and correctly coordinated.

The accessories available this spring to round out new ensembles, are more interesting than ever. Look at the jewelry, for instance. Colors are light and bright—just the thing to put some needed sparkle into a fellow's clothes. Stones, for example, lean heavily to facet or emerald cuts. Newest are the "gold stones" used in cuff links and tie bars.

ANOTHER FRESH idea is the use of contrasting stones with a different type in each link. Etched crystal effects, small stones and seed pearls accent both medium shaped and small pieces. Settings include "floating" or illusion ideas that seem to defy the laws of gravity. There are fine Florentine finishes, grills, double-deckers, textured effects in metal, and actual screens.

Sports motifs are as popular as ever. Belts have gone colorful. Bright stripes on fabrics and elastics, combined leathers and fabrics, metal lined holes, and exotic skins all blend to make belts attractive as well as practical. Another feature of the new belts are the novel buckles and fastenings. Many of these carry designs and motifs of their own. Others are massive in treatment, using bold buckles on simple leathers. There are rope effects, webs and braided elastics for casual wear.

ALL THE FAVORED belt leathers are seen in wallets, billfolds and pocket secretaries, too. Calfskins, moroccos, pigskins, ostriches, alligators, and many others are available in very slim types for dressy wear and to hold business and identification card for business wear. Belts and wallets made to match challis ties are a new idea and an Ivy favorite.

Pocket handkerchiefs—adding that extra flash of good taste—abound in new and handsome border pattern treatments.

Cancer Society Branch Opened

The Birmingham branch of the South Oakland County unit of the American Cancer society was recently organized. For the time being it is being conducted by five local women.

Mrs. Ben D. Mills of Pine road, Birmingham, is general chairman, Mrs. George Webb of Waddington road is public information chairman, Mrs. William Simpson of Derby road is public education chairman, Mrs. Daniel Latton of Waddington is public service chairman and Mrs. Morgan Collins of Waddington is cruises chairman.

South Oakland county unit's headquarters is on Coolidge near 11 Mile in Berkeley. Supplies housed there include bandages, dressings, tape, vaseline, rubbing alcohol, hospital beds, service enamelware and wheel chairs. These are available to any and all cancer patients free of charge, regardless of financial status of patient.

Movies dealing with various phases of cancer are available to clubs and groups and are accompanied by a physician to interpret and answer questions.

Individuals or groups interested in supplies or information should contact any of the above-mentioned women.

The Smartest Move You Can Make
is to **BESSENGER'S**
for a **Special Showing of Drapery Fabrics**

Exciting new "Spring" fabrics color co-ordinated for your decorating ease

You're sure to find exactly the right color in precisely the right texture among the 137 "spring" fabrics displayed... sheers, casement cloths, heavier drapery and slip cover cloths, in an artist's palette of colors!

Our experienced sales personnel will help you in your choice and in determining the necessary yardage.

Select the color you like, in the texture you like, from our interesting selection of colors and textures

Fabrics \$1.79 to \$3.95 Yd.
Other price ranges on display

If you desire, Bessenger's will make your draperies

BESSENGER'S
23535 WOODWARD, NEAR 9 1/2 MILE
Established 1927 LI 1-4936

Fabrics are hung for easy self-service selection
Pleated long lengths show you how each fabric would look hanging at your window

AT LAST, SUMPTUOUS, TEXTURED

100% Virgin Nylon

FOR ONLY **\$8.95 A SQ. YD.**

"NORWICH" CARPET

You'll love the rich texture, deep look and feel of Norwich's high-low loop pile. Its gracious styling will give a handsome new appearance to your furnishings.

Beautiful fast colors and it stays new—Norwich is superior for wearability... and cleanability! Those bothersome household accidents wipe right off with detergent and water. Its beautiful high-low texture keeps its shape, and Norwich is moth-proof, mildew-proof and non-allergenic!

CALL LI 2-9595 for complete color selections and estimates brought to your home free-of-charge. See Cabin Crafts, fabulous Norwich carpet under your lights with your furnishings!

BUDGET TERMS

Harold B. Brown LI 2-9595 JO 4-6373

CARPETS AND RUGS

Open Monday, Thursday, Friday Evenings Till 9

2863 WOODWARD (Between 11 and 12 Mile Roads)

LEWIS
It's... *fine furniture*

for **COLONIAL & PROVINCIAL!**

Fine Quality Foam Filled
Wing Sofa
\$279.50
• WIDE COVER CHOICE

A wonderfully comfortable sofa made in your own selection of covers from a most complete assortment of prints and textures. Order now for early spring delivery.

ALLOW 4 to 5 WEEKS — CUSTOM BUILT TO YOUR ORDER

Style & Quality!
Wing Chair
\$129.50
• FOAM RUBBER

Colonial styling at its best and modern comfort at its fullest. It can be made to your order in a wide choice of materials.

BUDGET TERMS as little as 10% DOWN

LIBERTY FIRM CHAIR
\$34.95

This delightfully comfortable, rugged chair is designed primarily for the men of the family, but has won the feminine nod as an asset for any room. Comes in black with gold stencil decoration.

LEWIS
fine furniture
235 PIERCE ST., BIRMINGHAM

Just North of Municipal Parking Lot—Merrill & Pierce