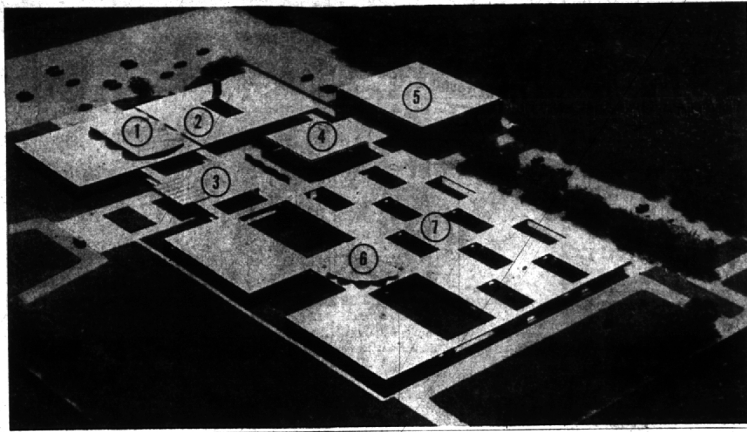


Classrooms Clusters Feature B'ham's New \$4½ Million School



Clusters of four classrooms each, with courts between them, are featured in the design of the Birmingham board of education's new junior-senior high school, the model for which (shown at left) was revealed this week by Architects Smith, Tarapata, MacMahon, Inc.

Work on the \$4½ million dollar structure is expected to begin this fall, with completion set for September, 1959.

The 50-acre site for the school is at Evergreen and 13 Mile, Westwood. Building will face 13 Mile.

Designed to accommodate an eventual 2000 pupils, the building's main features are: 1) little theatre, music, speech, and radio workshop facilities 2) cafeteria 3) administrative offices 4) indoor-outdoor swimming pool 5) gymnasium and auditorium 6) library, and 7) 28 classrooms and two study halls.

OTHER SECTIONS of the building will house facilities for business education, science, arts and crafts, homemaking and shop, industrial arts, printing, and journalism.

Ten additional classrooms (center row, 7), originally planned for construction when needed later, may be built with the original building, depending on bids on alternate plans.

School district voters approved the bond issue for the new school in June, 1957.

THE SCHOOL WILL BE USED as a junior high school at first, later converted to a senior high school as to the school population center shifts to the senior high level.

(See page 8-E for artist's conception of gymnasium and swimming pool interiors, plus site layout.)

'Come on 'a my house'
... is theme of Larsons. See page 1-E for family fun in four generations.

Why is fellowship...
important for churchgoers? Rev. Elbert W. Nuelken tells you on Page 7-B.

The Finest...
That's what Birmingham's new south high will have in athletic facilities. Sketches, a site plan and story on page 8-E.

Amusements	4-B
Books of Birmingham	8-A
Bills & Reviews	1, 4-B
Business Briefs	4-B
Church	7-B
Correspondents	
Bloomfield Village	5-C
Greenfield Derby	2-C
North Adams	5-A
8-C	
Down to Earth	8-B
Editorials	8-B
Nature Now	8-B
Obituaries	8-A
Outdoor Living	Section C
Recreation Roundup	3-A
Round the Towns	1-E
Sports	8-E
Today's Youth	4-A
Woman's News	Section C
Want Ads	6, 7-A

Being able, wisely and well, to communicate your thoughts to another, be it relative, friend, or anyone, is no simple matter, and, indeed, if one sought to learn this art more thoroughly, if he gave as much attention to it as he does to ordinary recreational affairs, his life would be happier. So would many other lives he mingles with.

81ST YEAR—NO. 21

The Birmingham Eccentric

32 PAGES
THURSDAY, JULY 31, 1958

BIRMINGHAM, MICHIGAN

SECTION A

Serving the Citizens of Michigan's Finest Suburban Residential Area



The Nation's Top
Editorial Weekly
TEN CENTS

Shoe 'Nuf
Said These
Barfoot
Belles

See
Where
and Why
on Page 1-C

Mayor Finds Drain Hearing Of Little Help

"Informative, but not very helpful" was Birmingham mayor Carl Ingraham's comment on last week's state health department hearing on a proposed order to force speeded construction of the \$50 million 12-down drain in southeastern Oakland county.

Reporting on the meeting to his city commission Monday, Ingraham said he told the health department that after eight years of municipal striving for the drain program, he could see no reason why the state body intervene. He added that such action might even hinder the project.

The health department, endowed with the right to take whatever action it sees fit in maintaining adequate sewage systems, is now lobbying the SOC committee "intolerable." It said it proposed the order to hasten action. Indications are that the mandate will be sent to the cities involved in the near future.

ACCORDING to Ingraham, willingness to complete plans for the drain and begin actual construction is not the problem as much as it is the state supreme court is currently testing cases of township financing opportunities which, if decided favorably, would give townships involved in the drain plan to back the project without millage restriction.

"I assured the health department that Birmingham was not at any time opposed to solving the problem and that we've tried all that could to stimulate solutions," Ingraham added.

Part of the proposed order sets starting and completion dates for the drain. First action, according to the

Hills Officers Nab Armed Man After Stabbing

BLOOMFIELD HILLS—Police here Sunday afternoon captured an armed Mexican itinerant worker who several hours earlier was involved in the stabbing of a 25-year-old man in St. Clair county.

The Soviet leader actually called such a meeting, although the UN location was the idea of Britain and a reluctant U.S.A.

AS WE WRITE these lines, July 25, the New York location seems to be the meeting place, even (See THIS & THAT, Page 8-A)

Do it Now!

Place an ad in The Birmingham Eccentric to rent your home or apartment.

OR A ROOM ONE FLOOR MODERN home in Birmingham area with view to purchase. University 2-2110.

The above advertiser always gets wonderful results when he advertises in our paper.

Phone MI 4-1100 today!

Six Days To Enter Net Meet

Birmingham area tennis players have six days left to enter the first Community Tennis tournament, to be held at Eton park Aug. 11-17.

The Birmingham Eccentric and the city recreation department are co-sponsoring the event. The Variety-Shop is furnishing trophies for winners of the eight divisions.

Tournament entries must be in the hands of meet officials by noon Tuesday. They may be mailed or brought in person to The Eccentric sports department.

SINGLES and doubles competition will be held for boys and girls, 17 and under, and for men and women, 18 years old and over. Full details and an entry blank is available to handle the extra load," Ingraham criticized.

Even Plants Love Life at Burlingame's

by JULIE CANDLER
Staff Writer

Even the flowers at Alice Wessels Burlingame's house seem to have a zest for living. It fairly radiates from the green-thumbed, red-headed lady of the house at 3891 Oak Hills, Bloomfield township, Birmingham.

She conveys that same zest to readers of her column in The Birmingham Eccentric, "Down to Earth." She makes speeches to organizations all over the Detroit area, stimulating audiences with her philosophy that "a person's garden should be his therapy for good living."

Her enthusiasm has spread to readers of her column in The Birmingham Eccentric, "Down to Earth." She makes speeches to organizations all over the Detroit area, stimulating audiences with her philosophy that "a person's garden should be his therapy for good living."

Her latest interest is a new project, The Detroit Visiting Nurses' association asked her to help on a story about her garden.

"Through horticultural therapy we can enter homebound patients in such a keen program that before you know it they are using their hands and feet in a way they didn't realize was ever possible," said Mrs. B.

With a visiting nurse, she visits a patient. She carries a "basket of tricks" to interest the patient, whether he ever gardened before or not, in tending some perennial plant life.

"SO MANY people who are ill have everything done for them, she says. "If a plant flowers beautifully for them, they achieve the feeling of being needed, which is so important."

The garden expert sets up a window sill garden or an outdoor project, depending on the patient's limitations. Then she asks the nearest garden club to assign two volunteers to see that weekly visits assist the patient with his project.

She's a firm believer in garden club women placing "a minimum emphasis on sociability and a maximum emphasis on community service projects" such as visiting home-



YMCA Names Executive Secretary

New executive secretary of the Birmingham branch of the Young Men's Christian association will be Owen Russell Manchester, it was announced this week by Arthur F. Blakeste, chairman-elect of the branch committee of management and Ralph Hillman, general secretary.

(See YMCA, Page 8-A)

Town Hall Reshuffles Schedule

Birmingham Town Hall board members had to leave golf course, lakeside cottage and vacation-bound highway last week for a fast reshuffling of famous women speakers and their Birmingham Town Hall dates. Because Mme. Pandit's ambassadorship was extended, and Cornelia Otis Skinner is opening in a new play, the re-scheduling was necessitated.

Dr. Margaret Mead, South Sem. roaming research anthropologist and author, curator of the American Museum of Natural History and professor at Columbia university, will open the series earlier than originally planned—on Sept. 26.

Following Dr. Mead, on Oct. 2-3, will be Peggy Weir, famous stage screen and TV actress, author of magazine articles and books (her latest is an autobiography).

(See SCHEDULE, Page 8-A)

Light Vote Forecast For Party Finalists

A traditionally light vote is predicted for Tuesday's state primary election, which will pick party candidates for top state offices, congressional and legislative seats and county posts.

Balloting will begin at 7 a.m. and continue through 8 p.m., with all voters in line at closing hour being allowed to cast ballots. A map of Birmingham's newly-modified polling precincts appears on page 1-B of today's Eccentric to guide local voters.

Primary votes must be cast on a straight party ticket, with all selections being made within one party. Split tickets are legal only in final elections in November.

This year's primary gubernatorial state is an exact opposite of the one carried on the 1956 ballot. Two Democrats and one Republican nomination this year while last primary was uncontested in the Democratic camp and contested in the GOP.

INCUMBENT C. Mennen Williams is opposed by William Johnson on the Democratic ticket. Paul D. Bagwell, former Michigan State University department head, is unopposed and will carry the Republican colors into the November final election.

Michael T. Mohardt and John B. Swainson are Democrat contestants for lieutenant governor, while state representative Donald A. Brown of Royal Oak is the only GOP candidate.

For United States Senator, Republican incumbent Charles F. Brannan is unopposed, while present Lieutenant Governor Philip A. Hart and Homer Martin will battle for the GOP nomination.

Congressional Representative William E. Brock and Thomas M. Swainson are GOP aspirants for the 18th district U. S. House of Representatives, while H. Hudson and Edmund J. Niparko are Democratic candidates for the post.

Police End Teen Age Beer Party

Like bees attracted to honey, teen agers and 20-year-olds swarmed on a Birmingham home Sunday night for a beer party, held in the absence of a youth's parents.

A swarm of 25 minors ended up at midnight at the Birmingham police station, from where police released them to the custody of their parents.

All face possible court action. Birmingham Police Chief Ralph W. Moxley said.

Community House Open in August

The Birmingham Community House will be open for the month of August, a change from the custom in recent years of staying closed to permit repair work and staff vacations.

Mrs. T. Schaffer, house director, said house facilities will be available to all daytime groups meeting there, as well as on Tuesday evening groups. Senior men's and women's groups will continue meeting during the month.

STRICTLY FRESH

Some folks hate to see their name in the paper. Others have been behaving themselves.

An old-timer is a fellow who can remember when "party line" referred only to the telephone system in a consumer's area.

Corn crop's going to be late this year. Last of it won't be harvested until the final speaker bureau election noise in November.

Greatest favoring ingredient for food ever invented is a nostalgic memory.

Follow across the desk from us in a spring tangle in a war round. You can't get him out of that county office chair.



quiet surrounding the William H. Burlingame's Bloomfield township home, Alice says, "You feel like you're at a lake resort or a cottage."