

# Wrigley SUPERMARKETS

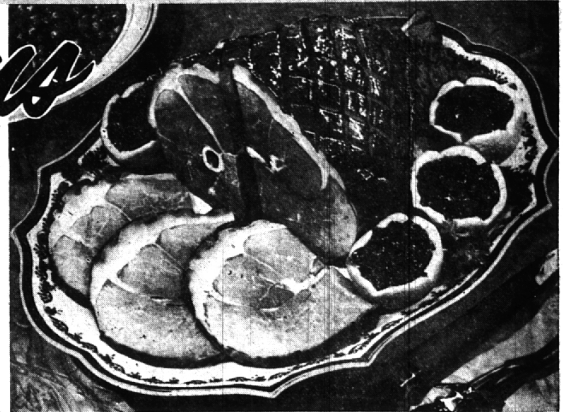
For Your Convenience... **WRIGLEY MARKETS**  
**OPEN WED. JULY 2nd. THURS. JULY 3rd.**  
**TIL 9 P.M.... CLOSED FRI. JULY 4th.**

• Prices effective thru Saturday, July 3th. • We reserve the right to limit quantities.

# Smoked Hams

•Hygrade's •Imperial •Swift's Premium  
 Hickory smoked, sugar cured, cut from 12 to 14-lb. average size hams. Exceptionally tender with a wonderful flavor.

Full Shank  
 Half **49<sup>c</sup>** lb.



### West Virginia Hams

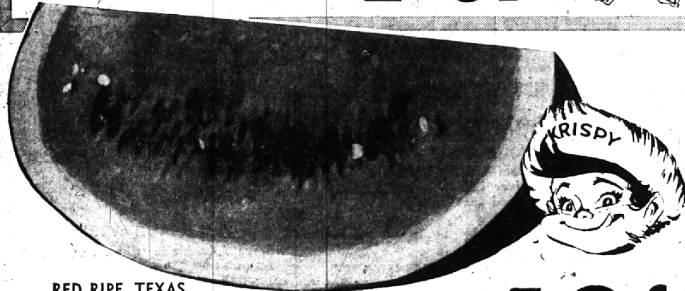
HYGRADE'S RANCH STYLE, LEAN Thick Sliced Bacon 2-lb. pkg. \$1.35  
 HYGRADE'S Fresh or Smoked Liver Sausage Any Size Piece lb. 49<sup>c</sup>  
 HYGRADE'S LEAN, MILD FLAVOR By the Piece First Cuts 89<sup>c</sup> lb. Center Cuts 99<sup>c</sup> lb.  
 Canadian Bacon 89<sup>c</sup> lb. Cuts 99<sup>c</sup> lb.

HYGRADE'S—Children love it for Sandwiches 12-oz. can. 45<sup>c</sup>  
 Sandwich Spread 2 to 3-LB. PIECES IN PLIO BAG, FAMOUS GUNSBURG CORNED BEEF lb. 69<sup>c</sup>  
 LEAN, FRESHLY GROUND Ground Beef for burger or Meat Loaf lb. 59<sup>c</sup>



PESCHKE or GLENDALE Mich. Grade 1, Skinless **Frankfurters** 2-lb. bag **89<sup>c</sup>**

TENDER, OVEN READY, PLUMP, MEATY **Hen Turkeys** 14 to 18-lb. Average lb. **39<sup>c</sup>**



RED RIPE, TEXAS

**Watermelons** 69<sup>c</sup> each  
 22-lb. average

## Freshland Means the Finest Produce

# 4 WAYS FRESHER

**1. BOUGHT FRESHER** ... By Wrigley's produce experts ... who follow Freshland all over the map and buy the very finest ... right in the fields.  
**2. SHIPPED FRESHER** ... Express refrigeration from Freshland's fields directly to our doors ... to lock in all that farm-fresh goodness.

**3. SOLD FRESHER** ... Cool-conditioned on display by Wrigley's exclusive ice-channels ... our own invention that keeps fruits and vegetables fresher. Mother Nature's way.  
**4. SERVED FRESHER** ... because we buy, ship and sell it ... fields-fresh from Freshland ... only Kool Krispy produce has a longer home-life.

Seedless Grapes New Crop California, Thompson White favorite lb. 33<sup>c</sup>  
 Large Bing Cherries New Crop, Northwest, Red lb. 49<sup>c</sup>  
 Santa Rosa Plums New Crop, Fancy lb. 29<sup>c</sup>

Sunkist Lemons JUCY, CALIFORNIA dozen cello pkg. 49<sup>c</sup>  
 Pascal Celery NEW CROP, CALIFORNIA, ALL-GREEN large 24-size stalk 29<sup>c</sup>

**KRAFT SALAD DRESSING**  
**Miracle Whip** Quart Jar **49<sup>c</sup>**  
 REAL GOOD OR KOOL KRISPY Dill Pickles Polish or Kosher Style quart jar 29<sup>c</sup>  
 IMPORTED SPANISH, MANZANILLA Mario's Stuffed Olives 10-oz. jar 49<sup>c</sup>  
 BELL'S DELICIOUS Giant Ripe Olives 3 tall cans 1.00  
**Star Kist Tuna** Chunk Style Save 10c Can **25<sup>c</sup>**  
 ITALIAN STYLE SALAD DRESSING Wish-Bone Dressing 8-oz. bottle 37<sup>c</sup>

**COOK-OUT SPECIAL**  
**Cliff-Char Charcoal** 5-lb. bag **29<sup>c</sup>**  
 ANACONDA ALUMINUM Chef-Foil Household Aluminum Wrap 12-inch x 25-foot roll 33<sup>c</sup>  
 FARM MAID GRAPE, STRAWBERRY, or Orange Soda In No Deposit Bottles 1/2-gal. bottle 39<sup>c</sup>  
 DAD'S OLD FASHIONED Root Beer In No Deposit Bottles 1/2-gal. bottle 39<sup>c</sup>  
**Vernor's Ginger Ale** Plus Deposit **6 Large Bottles 1<sup>00</sup>**  
 OLD-FASHIONED FAVORITE Sunshine Fig Bars 1-lb. pkg. 39<sup>c</sup>

**HYGRADE'S Party Loaf** 12-oz. can **39<sup>c</sup>**  
 TENDER, GOLDEN, WHOLE KERNEL Niblets Corn 3 12-oz. cans 49<sup>c</sup>  
 SAVE ON THIS DELICIOUS NEW SPREAD Peanut 'flu' 10-oz. jar 37<sup>c</sup> 16-oz. jar 53<sup>c</sup>  
 JUST RIGHT WITH A MILD BITE Open Pit Barbecue Sauce 18-oz. decenter 39<sup>c</sup>  
**Potato Chips** WRIGLEY'S NEW KRISPY FLAKE 1-Lb. Box **59<sup>c</sup>**  
 SAVE 8c. REDEEM YOUR NEWSPAPER COUPON ZEST Deodorant Beauty Bars 2 reg. bars 29<sup>c</sup> 2 bath size 43<sup>c</sup>

**CANNON FIRST QUALITY Beach Towels** Jumbo size, 32x64-inch Each **99<sup>c</sup>**  
 • 9 in. Plates, 40 ct. • Hot Cups, 24 ct. • Cold Cups, 48 ct. Paper Plates, Needs Your Choice pkg. 49<sup>c</sup>  
 PASTEL COLORS Pert Table Napkins 200-ct. pack 29<sup>c</sup>  
 WRIGLEY'S KOOL SIP, SPARKLING Beverages Assorted Flavors Plus Bottle Deposit 3 24-oz. bottles 29<sup>c</sup>  
**Hawaiian Punch** Save 9c. Regular or New "Golden" **2 46-Oz. Cans 69<sup>c</sup>**  
 IN PASTEL COLORS Camay Soap 2 reg. bars 21<sup>c</sup> 2 Pink bath 29<sup>c</sup>

BY THE DOZEN! GENUINE **Popsicles or Fudgicles** Dozen (2 pkgs. of 6) **49<sup>c</sup>**  
 Stouffer's Frozen, Meat & Egg Macaroni & Cheese 2 8-oz. pkgs. 49<sup>c</sup>  
 Patti Pak, Frozen, Chopped Beef Dinner Steaks 1 1/2-lb. pkg. 99<sup>c</sup>  
 Frozen, Ready to Grill Patti Pak Burgers 3-lb. pkg. 52<sup>99</sup>  
 Vanilla, Chocolate or Neopolitan 1/2-Gal. Carton **59<sup>c</sup>**

5c OFF LABEL... TABLE SPREAD **Keyko Golden Margarine** 2 1-Lb. CARTONS **49<sup>c</sup>**  
 Borden's, Low Calorie, Hi Protein Cottage Cheese 1-lb. carton 23<sup>c</sup>  
 Sealtest, Chip Dip Dip-N-Dressing 1/2 pt. cup 33<sup>c</sup>  
 Bill Stern's Dressing for Salad Roquefort Dressing 8-oz. jar 49<sup>c</sup>  
 Sliced Cheese Borden's Pimento & Pineapple 2 5-oz. jars 49<sup>c</sup>  
 Mozzarella or Scamorza Pizza Pie Cheese 69<sup>c</sup>  
 Wrigley's New Food Club Processed American or Pimento, 8 slices 8-Oz. Pkg. **29<sup>c</sup>**

GET FINER GIFTS FASTER WITH GOLD BELL GIFT STAMPS

855 S. Hunter

Maple and Telegraph

1855 S. Woodward

9-9 Monday through Saturday

Hours: Monday, Tuesday, Wednesday, 9 a.m. till 6 p.m.  
 Thursday, Friday, Saturday 9 a.m. till 9 p.m.