

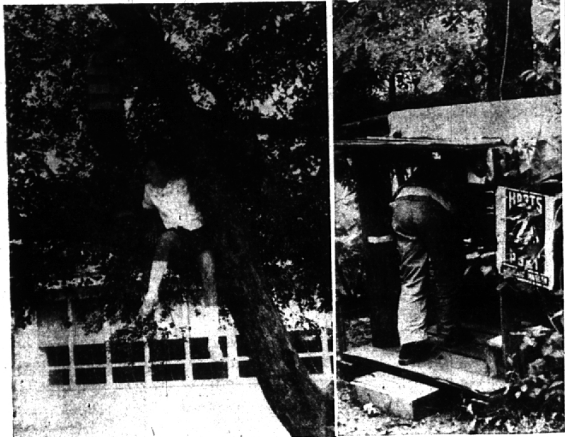
'round the towns news

The Birmingham Eccentric

BIRMINGHAM MICHIGAN

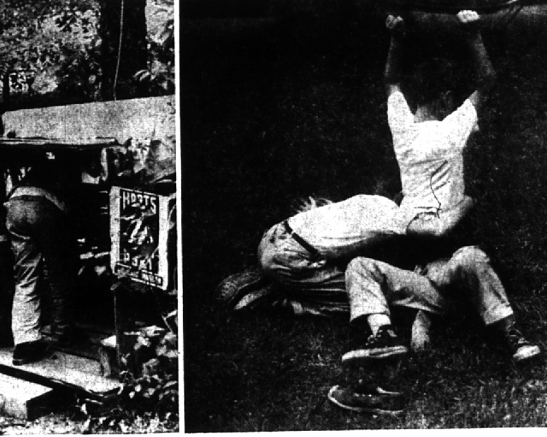
LATHRUP • FRANKLIN • WING LAKE • GILBERT LAKE • WALNUT LAKE • FOXCROFT • W. & E. BEVERLYS • THE BERKSHIRES • VALLEY WOODS • SOUTHFIELD, BLOOMFIELD & W. BLOOMFIELD TWPS.

'Where did you go? Out What did you do? Nothing'



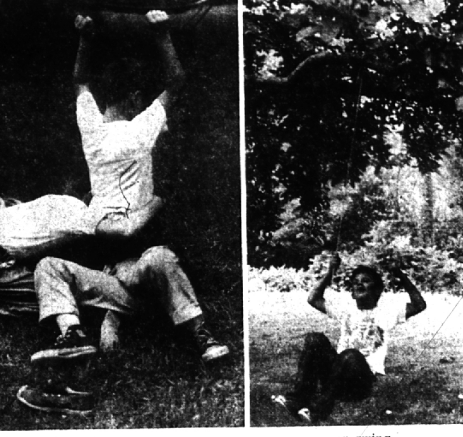
cept scale trees

Average youngsters have immense imaginations. When left alone, they usually don't organize so wisely much, but they do have fun. Some pretend. Some build. Others tramp in wooded areas. Or, they just talk to themselves.



'n' clean the fort

Jeff Greg and Amy had just returned from an outing, but found time to climb trees and slides at the Wing Lake school while awaiting their ride home.



'n' fight a little

A sign saying "Danger! High Explosives" graces their fort wall. Seems that the space rage has hit the youngsters with a "super-sonic force."

or swing

Other area tikes enjoy playing railroad, dolls, cowboys (television version), space patrol, monopoly, detective, restaurant, and often just day dream, while lolling in a field with their dogs, cats and playmates.

maybe slide some, too.

Summer is passing all too quickly for these youngsters, whose unrestricted play will soon be confined to after-school hours.

But, next summer they will scale trees, 'n' clean forts, 'n' fight a little, or swing and maybe slide some too.

Franklin Drainage Problem Climaxing

Villagers Learn Interceptor Vote May Decide Issue, Council Announces

FRANKLIN—After four years of valiantly trying to solve all its problems alone, Franklin village officials learned Monday night that some of them could be shouldered by a benevolent brother, the Oakland country drain commission — if they went about it properly.

"Drainage is no respecter of village limits," they were told by Daniel W. Barry, county drain commissioner.

"The flow of surplus water is a matter of geography and drain districts are determined by conditions in an area governed by general topography, rather than government borders."

AS BARRY SPOKE, councilmen began to bask in the bright new light of greater understanding and excitedly piled him and Robert Allen, county legal adviser, with questions regarding procedure in applying for relief from present conditions.

"Actually, village roads are the council problem, but drain districts transcend the authority of a charter and the county can help if the residents of a beleaguered area will petition the county (only ten property owners signatures are needed) to declare a drain district."

Barry continued to explain the negatives of residents under Act 40. A hearing would be held following the filing of an application, and, providing no overwhelming objections occurred, property owners could be assessed for seven years to cover the cost of drain construction.

"RELIEF is actually the responsibility of the people directly involved, rather than a problem of the local government," Barry indicated.

ELSEWHERE IN THE ECCENTRIC

- Corn Grows High In North Adams 1-A
City Commission Candidates 1-B
Meters Have Something To Talk About 7-B
Invitational Golf Tourney At B'ham Contry Club 1-C
First Entries Filed For Eccentric Tennis Tourney 8-E

Do-Si-Do Your Partner And Bail Out the PTA

By NITA HARD Eccentric Correspondent

FRANKLIN—Franklin parents will dig deep in their own pockets and move heaven and earth for their children. They proved it Monday night when the executive board of the Franklin school PTA voted to do exactly that.

The PTA's project is to improve playground facilities at Franklin's hilltop school. Not so simple, since it involves shoveling earth from one part of the hill to fill a cavity in another. Nor so cheap, the estimated cost being \$3,800, give or take a little.

And the Franklin PTA is in a hurry. If the work is going to be done some day, why not let the younger generation romp there this fall?

SUCH ENTHUSIASM led the Franklin PTA to a procedure literally unheard of in PTA circles. They decided to borrow the money!

In the chilly halls of a bank, however, cool reason prevailed, and PTA members decided they weren't willing to enter into "together or severally" agreement with a bank.

Westwood Councilmen Say Zoning My Way?

By MARY H. SCHMIDT Township Editor

WESTWOOD—Village councilmen wandered up and down 13 Mile and Southfield roads in their imaginations Monday night, dropping colonial-style supermarkets, doctors offices and service drives on vacant lots to see how they would look.

After each stated his dreams and opinions, the consensus was that a planning commission was needed at once and professional help eventually. So the council asked that villagers with ideas and experience in building and planning contact the council and volunteer to help.

SOME SPECTATORS and some councilmen wanted commercial development kept out of the village entirely. Others thought this impossible. They said the courts consistently ruled in favor of businesses in zoning suits leading to commercial spots in residential neighborhoods.

A big fence following the hill's contour to catch rolling balls and children; Yards and yards of black-topped walks; A dry well to catch the excess water Franklin is famous for; And top soil and seed to make a verdant lawn out of sand.

THAT'S quite a lot for \$3,800. So honor your partner, Franklin square dancers. It'll take a lot of stepping to pay the piper.

Mouse Bites Boy Who Tried to Help

WESTWOOD — Four-year-old William Vilwell was treated at Beaumont hospital Sunday after a mouse bit his thumb. Westwood police said the mouse was sent to Herman Kiefer hospital to be tested for rabies. The boy was bitten as he tried to rescue the mouse from a neighbor's cat. Billy's parents, the Robert A. Vibberts live at 1826 Beverly.

S'field Schools Run in The Red

SOUTHFIELD — The district's schools ran \$116,739 in the red last year, but next year's budget will be juggled to make up the deficit and there will be no increase in the tax rate, school officials announced today.

Norman Olmstead, assistant superintendent, said a deficit of about \$400,000 had been expected, but that the figure ran up mostly because of Asian flu. So many teachers were out with flu that the district ran way over its budget paying substitutes, he said.

Southfield's schools get \$27.92 per thousand of assessed valuation, and spend about two and a half million dollars a year for operating costs. Olmstead said the school board would probably trim some of furniture from next year's budget to make up the difference.

Salaries will not be cut, Olmstead said, and they use up most of the budget.

AT A SPECIAL meeting last Thursday, the school board authorized new surfaces and reconditioning of the Lathrup school tennis courts. B. J. Pollard, Detroit, will do the work for \$14,000. Pollard will also pave the area around the high school swimming pool for \$475.

Supermarket Zoning Splits Double Header At Lathrup Meetings

LATHRUP—Storm warnings hung over Lathrup's house-in-the-woods both upstairs and down Monday evening. Bounced on stormy seas of controversy were the proposed Food Fair and A & P supermarkets.

In a room over the city offices the zoning board of appeals decided against recommending the Food Fair rezoning request.

In the council chambers ex-mayor Lantz L. Mackey vehemently opposed vacating an alley for the A & P, but the supermarket was approved by all five council members.

THE PUBLIC hearing on the Food Fair rezoning drew about 80 residents, mostly opposed... on June 27, but the board postponed its vote until Monday to allow real estate dealers Louise Lathrup Kelly and Charles Kelley more time to show why they felt rezoning of additional lots was needed.

AS PROMISED, the 20,000 square foot building would take up the entire block just north of the Kelley's real estate office. Together with parking area, the entire block bounded by Southfield road, El Dorado, California and Sunset would be utilized.

ALTHOUGH no notices were sent out and Monday meeting was not a public hearing, about 70 concerned residents trooped through the downstairs council chamber to climb the stairs and talk about the Food Fair.

Westwood Gets Swimming Pool, Downspout Laws

WESTWOOD—The village council passed two emergency ordinances Monday. One regulates residential swimming pools and reconditioning of the Lathrup school tennis courts, the other provides for disconnecting downspouts.

Both became effective with publication in The Eccentric today. The pool law requires a four-foot fence around pools, and disconnecting downspouts from downspouts disconnected from new conditions are critical in an area.

Professor Will Fill In As Lathrup Manager

LATHRUP—The city council Monday appointed Gordon W. Kingsbury, 28634 Lathrup, acting city administrator. An instructor at the Wayne state university school of business, Kingsbury volunteered his services until September 15.

Mayor Richard Cogger said that Kingsbury had advertised in two publications for a replacement for Leonard Watchowski who resigned July 7 to take up the position of village manager for Roseville.

KINGSBURY has been employed by both Kevinator and General Motors corporation. He has been a member of the city of St. Clair board of review, served for five years as president of the Wolverine Mutual Insurance company, and has been secretary-manager of Adcraft of Detroit.



Mrs. Jean McDonnell and Wimpy

Who's Getting the Bird?

By DOROTHY ZATELL Eccentric Correspondent

Tied by a "silver cord" and fed by a silver spoon, an adolescent pigeon seems no reason to advise them of this opportunity.

Hand fed on such choice tidbits as canary food and hard-boiled egg yolks, the bird comes back like a yo-yo whenever Jean tosses him into the air.

NOW he's a fluffy glossy gray feathered and dignified with the name, Wimpy. But he still likes nothing and wants Jean to feed him. At the sight of food, Wimpy goes into an odd little dance on the table top. Ducking and nodding, he utters most unpigeonlike cries of pleasure

Car Collision Injures 2 S'field Residents

SOUTHFIELD — Three persons were injured Sunday when two cars collided at Greenfield and Catalina Dr. Elmer Carroll, 69, of Detroit, suffered scalp cuts and a broken leg. Charles Gleason, 45, and his wife Gertrude, 55, 3009 Brentwood, were cut and bruised.

GORDON W. KINGSBURY