

## Improve Look Of Home; Build Woven Fence

What's new around the home? Well, it's a woven fence, which will enhance the appearance of anyone's house.

Easy to construct, a woven fence is both distinctive and practical. Set your 4-inch square posts in concrete spaced about four feet apart and two and a half to three feet deep.

An easy-to-handle, long-lasting fencing material for this purpose is Masonite "M" Siding, available at lumber yards in strips 12 feet long and in widths of 12, 16 or 24 inches. Slightly round the edges of the siding and bring the joints into moderate contact.

THE TEMPERED pressedwood siding is fastened to the posts with five-penny galvanized siding or galvanized box nails spaced not more than 4 inches apart and not closer than 3/8 inches to the edges. Paint as soon as possible using a primer sealer and two finish coats.

A chemical called chlordane will rid yards of most of the ants, according to entomologists at Michigan State University. The granular form of the chemical is recommended. Apply it either directly to ant hills or sprinkle it over the lawn.

Recognizing the symptoms is the first step in correcting plant nutrient deficiencies. Soil scientists at Michigan State University suggest you keep an eye on the leaves of crops for hunger signs.

# Landscape Unit Enhances Picture Window View

## Ideal Solution For Crowded Housing Area

Homeowners with a desire for the spaciousness and light afforded by picture windows and entire window walls, but who hesitate to incorporate these popular features into their home because of small lawns or lack of a pleasant view are now working with nature to literally put a picture in their picture windows.

It's a relatively simple matter to screen the view of bleak backyards or an alley and transform them into a colorful setting of natural beauty.

To do it, carefully select trees and shrubs with an eye to the cover they will provide at all seasons, and then planting them as a backdrop for the flower beds.

BY EFFECTIVELY screening adjoining property with flowers, trees and shrubs, the homeowner is able to make an attractive setting to view from the house.

Patioes can then be joined to the house with sliding plate glass or insulating glass doors to complete the open living theme.

There is a widespread demand in contemporary residential design for large glass areas such as picture windows and window walls of both fixed and sliding door type, and the landscaping unit is the means of making these features

practical for homes in crowded areas with small grounds.

IT IS SURPRISING what a difference the combination of sliding glass doors and tasteful landscaping will do to the size and appearance of even the smallest home. The interior of the house becomes brighter and appears more spacious.

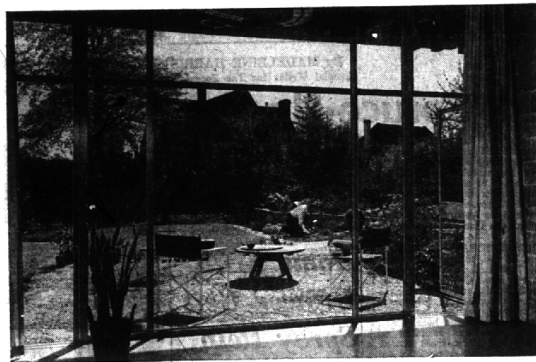
The idea is a variation of one originating many years ago in Japan. Congested living conditions there, with houses bunched close together on small lots, made it practically impossible to obtain a pleasant view from the house.

Looking out a window, one usually saw only neighboring backyards. To overcome this, intricate fences and dense foliage were used to screen adjoining property and provide a pleasing view.

NOW, BY USING much the same idea, the American homeowner can accomplish the same desired effect at little cost. Much of the work can be done easily by the home gardener. Fences of varying, attractive designs also form an interesting background, and some homeowners are using patterned glass screens for added beauty and low upkeep.

Before planting, it is a good idea to discuss your plans with a landscape architect who can recommend the flowers and bushes to use. This way you will be assured of getting varieties which will grow high and thick enough to provide the desired screening.

SOME BUSY evergreens placed at strategic places will help provide cover and a pleasant view in all seasons of the year.



## Built-in Landscaping

Built-in landscaping provides privacy by screening adjoining back yards and gives residents a pleasant view through this wall of insulating glass. A variation of Japanese styling, the "landscape unit" is made up of trees, shrubs and flowers, chosen for the

cover they give. By utilizing this method of "man-made" beauty, homeowners living in crowded residential areas can enjoy the full benefits of light and spaciousness inherent in contemporary indoor-outdoor living.

## House Should Govern Size Of Plantings

To be effective, planting must be in scale with the size of the house and of the property as a whole, says Harlow O. Whittemore, chairman of the department of landscape architecture at the University of Michigan.

"The owner of a small property will do well to choose from the numerous varieties of larger trees which have grown as dwarfs of

have been propagated by nurseries to retain that character, or he may select plants of normally small size and having mature character even as small plants."

"Among the dwarfs available are the Swiss mountain pine, Alberta spruce, Colorado limber pine, which is a dwarfed form of white pine, and the Swiss stone pine. These are all natural dwarfs. Trees which are small in growth but which, nevertheless show rugged maturity are the red bud, wild crab apples and certain of the Asiatic crab apples, Chinese honey locust, black haw, various hawthornes and flowering dogwood.

"THE LARGER houses, calling for large growing plants, may select plants of normally large size and having mature character even as small plants."

"A second possibility is to use long-lived medium growth trees, moved in by the use of special machinery. Large elms, sugar maples and red oaks can be moved in this way but the cost of moving is high.

"A third method is to plant rapid growing temporary trees and slower growing permanent trees at the same time, removing the rapidly growing trees when the slower trees have reached a semi-mature stage.

"LARGE GROWING shrubs and fairly rapidly growing shrubs for border planting off the corner of the building are easily available either in rapidly growing material or material already of large size. Such are flowering mock orange, common and French hybrid lilacs, Amur honeysuckle, forsythias and shrubby dogwoods.

"The problem of using rapid growth plants and still keeping the composition neat and clean-cut can be solved by underplanting, after five or 10 years, with shade-tolerant small shrubs and broad-leaved evergreens."

Feeding raw garbage to hogs is outlawed in every state but Connecticut.

## Sherwin-Williams SWP is your best buy in house paint...



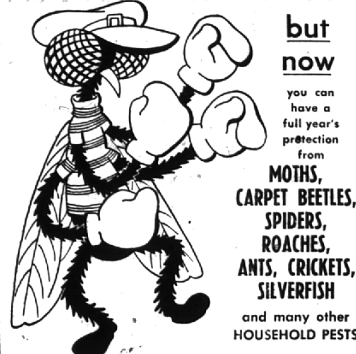
BECAUSE SWP HAS AN OUTSTANDING, YEAR-AFTER-YEAR RECORD FOR PROVIDING MORE HOMES WITH LONGER-LASTING BEAUTY THAN ANY OTHER HOUSE PAINT.

Stretches the years between painting. Endorsed by leading painters.

BEST BUY FOR PORCHES, FLOORS, STEPS AND DECKS \$2.23 OF SHERWIN-WILLIAMS PORCH AND FLOOR ENAMEL

**HUSTON HARDWARE CO.**  
Birmingham's Oldest Hardware Store  
205 N. Woodward MI 4-7330  
Hours: 8 to 5:30 Friday, 8 to 7 p.m.

## HOME PESTS PACK A PUNCH!



but now you can have a full year's protection from MOTHS, CARPET BEETLES, SPIDERS, ROACHES, ANTS, CRICKETS, SILVERFISH and many other HOUSEHOLD PESTS

Rose Exterminator Company—oldest and best known service in the field—now offers home owners a written policy with warranty against nine different, common household pests. Our trained, professional, polite servicemen are already protecting hundreds of homes in this area. This is simply modern, common sense housekeeping—life made easier—at a cost so reasonable it will actually surprise you. One low payment gives you our service for an entire year.

Call TEXAS 4-9301 for information regarding our new HOME PLAN at no obligation!



BEAT HOME PESTS TO THE PUNCH

You will find many bargains in The Eccentric Classified Columns.

## YOU COULD

make it easier for your wife if you would—

- 1) Thoroughly weed and cultivate the garden
- 2) Spread BUCKWHEAT HULLS about 1/2" to 2" deep over the bed.

No more weeding this year. The B.W. hulls keep the weeds down yet permit water, air and fertilizers to go right through to the places they are needed.

One 50 lb. bag costs \$2.50 and covers 41.76 sq. ft. to a depth of 1 1/2 inches.

Flowers will be more like you want them to be and vegetables will be more like you if you are generous with AGRICOLA'S 5-10-5 or STADLER'S 4-12-4, your great big strapping man. You didn't get that big without food. What do you want—tiny little turnips and parsnips?

The MEL-O-ROD is without a doubt the most perfect way to get a lot of water on a small area when you don't want to use a sprinkler. It aerates the water so it doesn't wash all the dirt away.

On only 4 days in the year will your sundial agree with your clock (if your clock is accurate) The maximum variation is 16 minutes late or early. The 1 correct days are April 15, June 15, Sept. 1, and Dec. 21. On Feb. 4th to 20th you will be 14 minutes late. On October 28th to Nov. 16th you will be 16 minutes early.

Beautiful sundials and pedestals are available in our shop or can be obtained in a short time from the sun god in N.Y.

The instructions and warnings on packages of insecticides, fungicides, herbicides, fertilizers, etc. have been put there for a very definite reason.

Indefinites—  
I bought one lily bulb last year and why do you suppose it didn't come up?  
Definites—  
I want my money back!

Wonderful new PLANTING TUBS called "HYDROCL" are very light and in three neutral colors—white, desert, and charcoal. They run from 10" to 16" and from \$4.95 to \$10.95.

A new shipment of lead stone, cast stone, and terra cotta figures, fountains and bird baths are here.

Recirculating pumps cut down the water bill, staining and well pumping.

Don't try to kill tough weeds now. The grass has a hard enough time just keeping green without having to handle the shock of 2-4-d and other herbicides.

"Shorty"

**McCLELLAN-BALL CO.**  
YARD SUPPLIES FARM KENNEL  
BIRMINGHAM, MICHIGAN  
850 S. Woodward  
Phone MI 4-4133

## T. W. HAY

Builder  
Family Rooms — Farm Kitchens — Porches  
Additions and Improvements



COMPLETE DESIGN AND BUILDING SERVICE  
655 Westchester Way MI 4-8661

## Your SEPTIC TANK

REQUIRES PERIODIC ATTENTION  
Public health authorities recommend that your septic tank should be cleaned every two years, with normal use and care. Call us for prompt, courteous service.

NOR-WOOD SERVICE  
MI 6-1496 313 Elm Birmingham

## ASPHALT PAVING RESIDENTIAL — COMMERCIAL

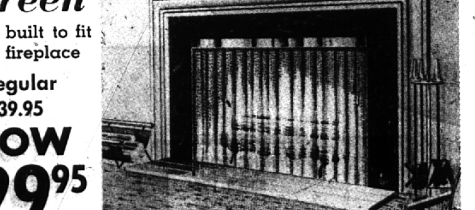
TERMS FREE ESTIMATES GUARANTEE

## DIAL PAVING CO.

1025 E. Maple, Stevens Bldg. Suite 101 MI 6-6414  
Birmingham

## Buy Now At Low Summer Prices Save \$10.00 on this Elegant Meyer Recessed Fireplace Screen

Tailor built to fit your fireplace  
Regular 39.95  
NOW \$29.95



for that "built in" look... bush mounted... highly polished brass... copper or black... fully guaranteed. Any size up to 50".

self-installs easily in 10 seconds  
built specially for YOUR fireplace  
NO HOLES to drill NO TOOLS needed

OPEN SUNDAYS 10 A.M. to 4 P.M.

EL 6-7300  
FEDERAL HARDWARE SUPPLY  
12 MILE RD.  
Open THURSDAY, FRIDAY and SATURDAY evenings  
SOUTHFIELD RD.  
Formerly Federal Merchandise Mart

Lawrence E. Smith  
Landscape Design and Construction  
135 N. Woodward in the Wilson Building Phone MI 4-2036

## WATER SOFTENER SALE !!

SUMMER CLEARANCE · SAVE \$100.00

Twice each year we have a clearance sale. No salesman's commissions are paid. Units are at cost. 14 models to choose from! All have copper & brass controls—all are guaranteed 10 years! These are all nationally advertised quality softeners!

QUANTITY	TYPE	LIST PRICE	SALE PRICE	COMPLETELY INSTALLED
4	FULLY AUTOMATIC FA-58-A, with automatic clock & 300 lb. salt storage.	\$369.00	\$259.00	COMPLETELY INSTALLED
2	70,000 GRAIN FAIRBANK-MORSE SINGLE LEVER—no valves to turn (AS ILLUSTRATED).	\$269.00	\$169.00	
2	80,000 GRAIN CLACK-DOWEX DUOMATICS Auto. backwash. Auto. rinse timer.	\$339.00	\$219.00	
3	64,000 GRAIN CLACK-DOWEX DUOMATICS Auto. backwash—Auto. rinse timer.	\$279.00	\$179.00	
3	PUSH BUTTON AUTOMATICS—with 300 lb. salt storage.	\$339.00	\$229.00	

Don't rent another month! 30 day free trial—what more can we say!

CALL MI 6-3247 FOR FREE WATER ANALYSIS  
**SOFT WATER CENTER**  
BIRMINGHAM, MICHIGAN MI 6-3247  
OFFICE—1391 MELTON RD.  
WAREHOUSE—1303 S. WOODWARD  
QUALITY IS THE ONLY PRODUCT WE'LL HANDLE