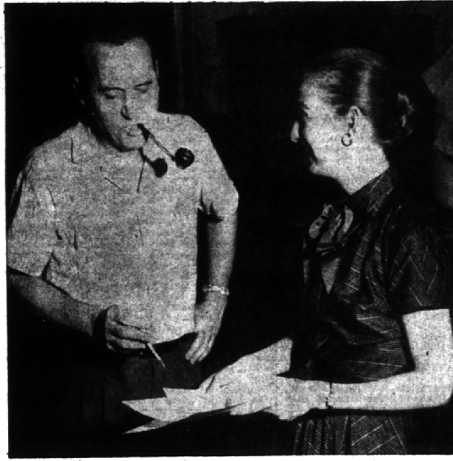
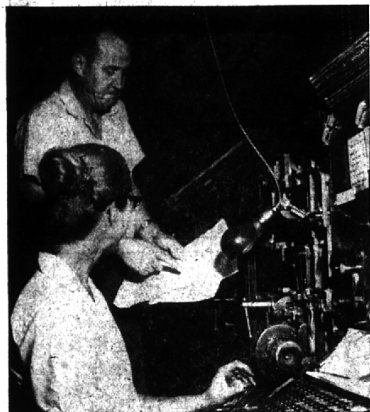




1 Eccentric township editor Mary Schmidt (left) receives Lathrup news story from staff correspondent Dorothy Zattel.

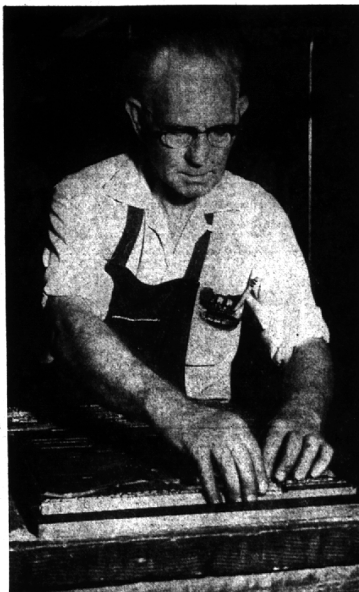


2 The edited story goes to composing room superintendent Fred Stinson.

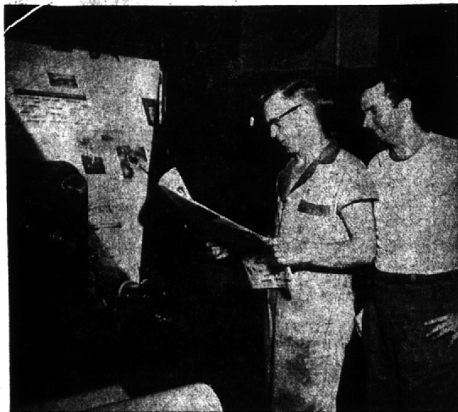


3 Stinson then distributes the copy to the linotype operators, here to Ethelle LePage.

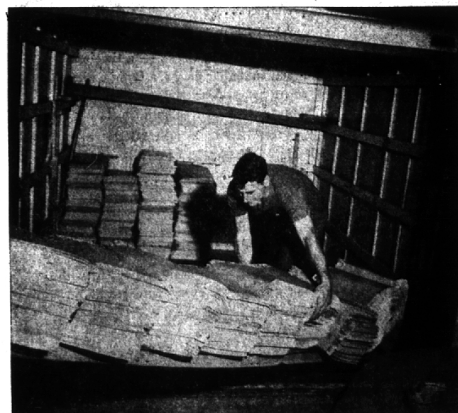
The Story of a News Story



4 The task of putting the stories, now in type, and their heads into the page forms is handled by Ken Krichbaum (above), assistant composing room superintendent, and his assistants. The completed pages go from the makeup stone to the press room.



5 The presses roll. Newspaper pressmen Gerry Rondeau (left) and William Stafford check over a copy of one of The Eccentric sections coming off the big press.



7 Eccentric driver Ken Braidwood loads bundles of addressed papers to be taken to the postoffice.



6 The next to last step, placing the sections together. Lois Hursley (above) is one of the women handling the Wednesday night task.

Named to Board At Annual Convo

Two Southfield area residents were named to three-year terms on the board of directors of the National Multiple Sclerosis society's Michigan chapter at the organization's annual meeting. They were Mrs. Simon Knudsen, 31500 Bingham, Bingham Farms, and E. G. Lovrance, 19406 Mid-

dleux, Southfield. The chapter also elected to develop plans for a multiple sclerosis patients program in affiliation with Wayne state university's college of medicine. The chapter is a member agency of the Michigan United Fund, a Torch Drive supported agency.

To be able to maintain a maximum of silence every day is an achievement. This is not to shout one's voice when necessary thoughts should be expressed, either. But it is not true that most of us really speak more words than we need to. Somehow, I have found, being more of a quiet listener is, indeed, mental relaxation . . . and the person talking to us likes a good listener.

The Birmingham Eccentric

BIRMINGHAM, MICHIGAN

Thursday, July 17, 1958

SECTION B

Is your car a hog for gas?



Go Rambler

Tops in sales gains because it's tops in economy



Rambler sales are up 78%... because Rambler's such an economical buy. Lowest in purchase price, easiest on gas, highest in resale value. For real savings, go Rambler now!

FREE! "MORE MILEAGE FOR YOUR MONEY" 16 PAGE BOOKLET TELLS HOW TO GET MORE MILES PER GALLON FROM YOUR CAR. GET YOUR COPY TODAY! SUPPLY LIMITED.

BIRMINGHAM NASH, INC.
666 S. Woodward, Birmingham MI 6-2900

Open Friday Evenings 7:11-9



Fashion leaders for 30 years

142 W. MAPLE — BIRMINGHAM
Branches in Royal Oak—Ferndale—Mt. Clemens



Schrank's CLASSIC PAJAMAS

with the 3-Way Collar

... ON SALE FOR ONE WEEK ONLY!

\$3.29
Regular price \$4.00

- Smart man-tailored pajamas with versatile 3-way collar, famous Schrank comfort features . . . yours now at special savings!
- No-iron blouse or fine cotton broadcloth in check, prints, solid colors. 32-40.




1. It's an Ivy League
2. It's a Mandarin
3. It's a Peter Pan

July Clearance
STOREWIDE REDUCTIONS

up to 50% off

- SUMMER DRESSES
- SPORTSWEAR
- BLOUSES and SKIRTS
- LINGERIE
- JEWELRY and BAGS