

Adding salt to the diet of a sheep makes its wool shrink-proof, according to researchers at the University of Illinois.

Wilson's
OPEN
EVERY NIGHT
UNTIL
10

featuring
Birmingham's Most Complete
Cosmetic Department

WILSON DRUG CO.
BIRMINGHAM, MICHIGAN

**HOLIDAY PARTY
RESERVATIONS!**

The Big DL
With only a few weeks until
Christmas and New Year's Eve,
make your party reservations
now at the Detroit-Leland.

• Experienced staff to assist in
arrangements.
• Unlimited refreshment service.
• Accommodations for private parties
from 10 to 200.
• Efficient, friendly service, and good
good food.
PHONE WO 2-2300

Ask for
Miss Thompson
Catering Manager
Hotel LELAND
CITY AT BAYVIEW, DETROIT (A MICH.)

Planners

(Continued from Page 1-A)

beds to the present 263, Pinkerman said. This, coupled with a 300-bed hospital to be constructed in South Oakland by Providence Hospital, Detroit, and another planned by Detroit's Brent osteopathic hospital, should take care of South Oakland's hospital needs for the immediate future.

If, however, private funds eventually were unavailable for needed hospital beds in South Oakland, the hospital authority could levy a tax of no more than 4 of a mill to residents in member communities. The millage would have to be approved first by voters in each municipality.

I THINK you are going to be plagued in the immediate future to review proposals by hospital corporations who may want to build small hospitals or clinics in your community," Pinkerman said.

If the authority's experts on community health facility requirements recommend against the village's approving construction of a specific clinic or small hospital, it would give the village a strong position in refusing building permits or the necessary rezoning. Dr. Wood told the commission he strongly opposed any group coming in as a tax-free community hospital which did not serve the entire community.

A GROUP of doctors could form a hospital corporation, Dr. Wood said, and set up a clinic which would be removed from the Westwood tax rolls. Still the clinic might serve only the private patients of the corporation's physicians, Dr. Wood said.

The planning commission's resolution in favor of joining the authority emphasized it was "subject to assurance that we will not be subject to any taxation without consent of the voters." Final approval of the village's joining the authority would have to be given by village voters.

Present member communities include Royal Oak, Birmingham, Berkley, Royal Oak township, and Hazel Park. Secretary Herman Drasick presided at the planning commission meeting in the absence of Chairman Herbert Herzberg.

Ocean levels are eight inches lower in the spring than in the fall.

Album

(Continued from Page 1-A)

In 1920, when the new Adams school opened, they moved over there. Miss Frederick continued to teach first grade and was Adams school's first principal.

Miss Frederick became principal of another new school—Quinton—in 1922 when it opened. She held that post until 1948, when she retired.

Miss Brown also spent 20 years at Quinton school, from 1932 until her retirement in 1952.

THE TWO live now at 544 Park, Birmingham. They're leaving this week for Christmas in California, which is where Mrs. Duffy hosted their 40th annual holiday get-together a little early this year.

As they sat near the Christmas tree, the four old friends reminisced. They talked about the 65 children in Miss Brown's first kindergarten class. The larger classes all of them had.

"But you could spank them then," said Mrs. Duffy. "That's many a boy in Birmingham that I've spanked!"

THEY discussed teacher salaries back when.

"The first year I got paid \$400 for ten months," said Mrs. Duffy. "I bought a little house that year with a \$20 down payment."

They remembered that there

were only 15 to 20 Birmingham teachers then. And that everybody knew everybody else in those days. Birmingham was more like a big family.

They're proud of all their former pupils, some of whom are grandparents now, and often stop for a chat when they run into them downtown.

Which sometimes makes it difficult to get any shopping done. Says Mrs. Duffy's husband, "She runs into so many of her pupils and stops for such long chats, I don't even try to go downtown shopping with her anymore."

The Birmingham Eccentric
Published weekly except semi-weekly for eight issues during last week in November, first five weeks in December, fourth week in May, and first week in July in The Eccentric Building, 225-231 No. Woodward Ave., by The Birmingham Eccentric, Inc. Telephone MI 6-1150.

George R. Averill, President, Editor and Publisher
Paul N. Averill, Vice-President and Treasurer
George W. Averill, Secretary

Entered as Second Class Matter in the U. S. Post Office at Birmingham, Michigan, under the Act of March 3, 1879.

SUBSCRIPTION RATES
(in Oakland County)
One Year \$4.00
Six Months \$2.50
Four Months \$1.75
(Outside Oakland County)
One Year \$5.00
Six Months \$3.00
Four Months \$2.00

34 Communities Charted in New Auto Club Map

Birmingham is one of 34 communities charted in the most extensive and comprehensive map ever made of Detroit's northern suburbs. Just published by Automobile Club of Michigan, Jerry E. Fisher, club touring manager announced today.

The new map encompasses a 450-square mile area bounded by Eight Mile road on the south, Drakes road (34 Mile) on the north, and Dequindre and Halsted roads on the east and west respectively.

AMONG other cities charted are Royal Oak, Berkley, Ferndale, Madison Heights, Southfield, Farmington, Pontiac and Rochester. Every street in each community is drawn and indexed. Maps of Oakland County, Detroit, Kensington Metropolitan park and main routes to Saginaw and Bay City are also included on the reverse side of the map.

Fisher said the new map, which took over two years to prepare, is a part of an Auto club series of Detroit's suburban regions. Other areas covered are the Northeastern and Downriver suburbs.

The multi-colored maps are available to club members at all division offices.

The Hunter's Whip NOW OPEN

Sundays

starting Dec. 14th
12:30 to 7 p.m.

• Full course dinners
• Children's portions

FRANKLIN VILLAGE (Closed Monday) MA 6-3131

Club Cliche
presents ...

Meg Myles
Best known for her movie
"The Phoenix Story"

and

Joe Conti
Hilarious Comedian

• BEST PARTY ACCOMMODATIONS
• NO COVER, except Saturday
• 20000 John R.
between 7 and 8 Mile Rd.

brightest Christmas
sparkle in town...

LAKES' JEWELERS

**Collector's Demitasse
by LENOX**

An exact reproduction of the first piece of Lenox china designed in 1889 by the founder, Walter Scott Lenox... now being produced in a limited edition. The base of the saucer is so inscribed. The cup and saucer are embossed with a delicate translucent floral design and trimmed in rich 24-karat gold. Distinctively gift boxed. \$5.95.

LAKES' JEWELERS

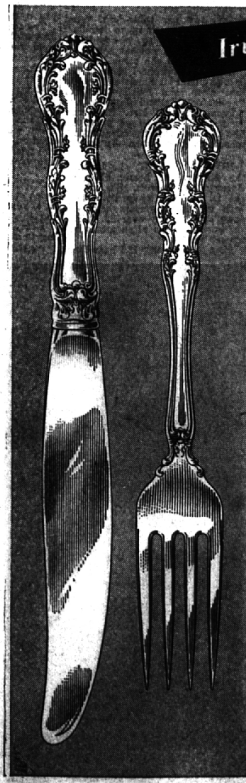
"The Sterling Store of Birmingham"

MI 4-5315

for all your particular gifts of
China, Silver, Diamonds, Watches!

Sterling is for Christmas... and for her

And check these wonderful savings!



**Save
over 40%
on this beautiful
WALLACE
STERLING
Pattern**

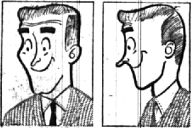
Six Piece
Place Setting **\$21.50**
FORMERLY \$35.00

Never before have we been able to offer you this beautiful WALLACE STERLING pattern at such remarkable savings! Now you can own a complete Service for Six or Eight at prices within your budget. And it's available in open stock—you can add to it as you wish!

24 pc. Service for Six
WAS 150.00 NOW \$93.00
32 pc. Service for Eight
WAS 200.00 NOW \$124.00

Prices Include 10% Federal Tax
See our complete assortment of place items and serving pieces, available at these LOW prices for a LIMITED TIME only

WANTED!
by every man for Christmas



**FLORSHEIM
Gift Certificates**

With
imported
leather
shoes
This Christmas is certain to be more enjoyable if you give America's most wanted item of apparel... Florsheim shoes. He'll find it easy to help himself to the finest in style and quality—and the bone shoe horn is a gift in itself.

**Sherman
SHOES**

MI 4-8788 115 W. MAPLE DETROIT
OPEN FRIDAYS 'TIL 9 P.M. BIRMINGHAM

Integrity first
with every purchase
at Lakes'

Woodward at Maple