



### Manager Resigns

JULY 10—Leonard Watchow, city administrator Monday. He will take up new duties as village manager of Rossville about July 21.



### Former Mayor Dies

SEPTEMBER 4—Former Birmingham mayor, Donald S. Bell, died Sunday night in a Tucson, Ariz., nursing home, the victim of a New Mexico mishap last winter. During the eight months prior to his death Bell had not regained consciousness following his injuries.



### POTTER

Moving & Storage Co.

no.1 specialist in local moving!



### POTTER

Moving & Storage Co.

2253 COLE

MI 4-4612

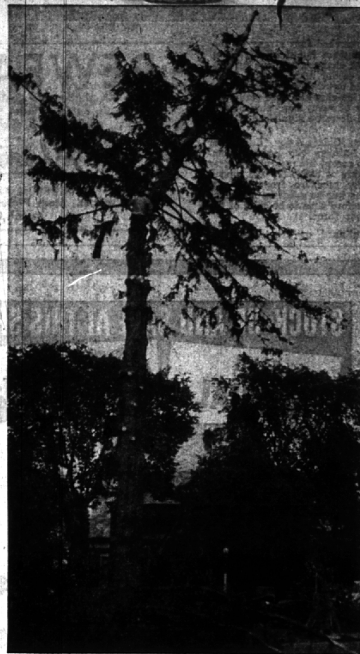
No. 1 on U.S. Highways • No. 1 in Service • No. 1 in Your Community

*Assured Comfort!*

with **KALTZ** Heating Oils • Coal



KALTZ Fuel, Inc.



### Ends Career

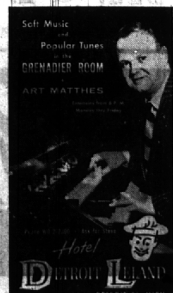
JULY 10—After serving for many years as the gathering spot for Christmas caroling and the city's officially lighted tree, a faithful old Birmingham servant ended its career. The familiar landmark in Shain park has been replaced by a younger tree to the north, now being groomed to fill its place.



### Rainy Day Accident

JULY 10—Lying injured after an accident on Woodward near Hamilton last Thursday, Mrs. Ernest F. Scherer, 32, of 1652 Apple Lane, Bloomfield Hills, was rushed by ambulance to William Beaumont hospital after the rainy day mishap. She ran into the side of a car, after a bus had stopped to permit her to cross, obscuring the view.

The shortest distance between buyer and seller . . . employer and employee . . . landlord and tenant . . . is a Want Ad.



### Greetings

We'd like to help brighten your holidays with our sincere thanks for the privilege of serving you and our warmest wishes for every happiness.

BIRMINGHAM TRAVEL SERVICE

## News Highlights

(Continued from Preceding Page)

could expect to enroll 4,200 students in three to four years.

The Illegentit nursery, Southfield, where watchman Tiny Jasinik was murdered Aug. 1, was visited by burglars. They forced open a rear door, dragged a heavy safe outdoors and made off with \$2,000 in cash and checks.

The Franklin village council decided to put the Evergreen interceptor up to voter's decision in November. Councilmen agreed there is a real need for relief from drainage problems in three village areas.

Birmingham's 1958 tennis champions were crowned following a jammed week of court activity. Norman Fredericks, 16, highlighted the community's first net tournament. He won the boys' and men's singles crowns and joined with Howard Johnson, Jr., to cop the men's doubles championship.

### Issue of Aug. 28, 1958

John F. Gordon, 1860 Rathmore, Bloomfield Hills, was elected president of General Motors to succeed Harlow H. Curtis. The 58-year-old executive becomes the corporation's chief operation executive.

A 57-year-old Kingsley Inn waitress was assaulted, robbed and had her car stolen. The woman, a Royal Oak resident, said she was struck over the head with a beer bottle by a tall, slim man, 25 to 30 years old.

Bloomfield township police arrested four juveniles who hitchhiked to the scenes of their robberies. The arrests cleared up 25 area robberies.

Lathrup was among the first area communities to pass the new school law requiring drivers to stop—regardless of their direction—for loading and unloading school buses.

### Issue of Sept. 4, 1958

Despite a last moment plea for economy by member Malcolm R. Lovell, Jr., Birmingham's school

Dec. 30, 1958 THE BIRMINGHAM (MICH.) ECCENTRIC 3-B

board approved plans for the city's new \$4½ million junior-senior high school.

Donald S. Bell, former Birmingham mayor, died in Tucson, Ariz., nursing home from injuries suffered in an automobile accident eight months before. He was mayor in 1949.

Appointment of E. C. Klotzburger, 1950 Glenhurst, as general manager of the Fisher body division of General Motors was announced. Klotzburger succeeds James E. Goodman, who becomes GM group executive in charge of Fisher Body.

Groundbreaking ceremonies were held for the new Lutheran church of the Shepherd King, Maple and Middlebelt. The new building is designed for 300 worshippers, will have a church school and other

(Continued on Next Page)

## BIG SAVINGS BONUS!

to introduce more women to famous

**Formfit**

BRAS and GIRDLES

- FORMFIT BEST SELLERS
- FIRST QUALITY MERCHANDISE

Formfit Confidential Bra No. 281

Reg. \$3.00 each

2 \$4.89

FOR

SAVE \$1.11



Formfit Confidential Bra No. 281

- Thin-foam lined cups for shaping and support
- Fine, MACHINE WASHABLE embroidered cotton
- Elastic back strap releases for freedom
- Three-adjustment closing for perfect fit
- White—Sizes 32 to 36A, 32 to 36B

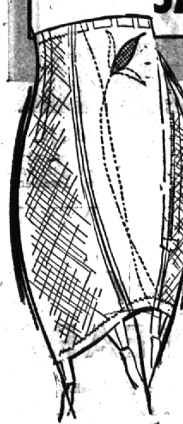
- A Formfit Best Seller!
- First Quality Merchandise!

Formfit Girdle No. 1590

Reg. \$16.50

\$11.95

SAVE \$4.55



Formfit

Girdle No. 1590

- HIGH WAIST style to control midriff and waistline
- Firm nylon taffeta front panel for flattening!
- French type leno elastic to mold hips and thighs!
- SIX garters!
- A wonderfully COMFORTABLE, CONTROLLING girdle!
- White—Sizes 27 to 34, 12 inch length

STORE HOURS:  
Daily 9 to 5:30  
Open Till 9:00 p. m.  
Fridays



CHARGE ACCOUNTS WELCOMED  
WE DELIVER

winter wonderland of bargains...

## White Sale SHEETS



and PILLOW CASES by Bates

### Plain White SHEETS

72 by 108, Reg. \$3.49	Now \$2.79
72 by 117½, Reg. \$3.99	Now \$3.29
81 by 108, Reg. \$3.99	Now \$3.29
81 by 117½, Reg. \$4.49	Now \$3.79
90 by 108, Reg. \$4.49	Now \$3.79
90 by 117½, Reg. \$4.99	Now \$4.29
108 by 122½, Reg. \$7.49	Now \$6.95

Plain White PILLOW CASES, 38½ by 42, Reg. 99c . . . . . Now 89c

White, Top & Bottom

### FITTED SHEETS

Twin Size, Reg. \$3.49	Now \$2.79
Double Size, Reg. \$3.99	Now \$3.29

White & Colored

### SCALLOPED SHEETS

72 by 108, Reg. \$3.99	Now \$3.29
81 by 108, Reg. \$4.49	Now \$3.79
Cases to Match, 38½ by 42, Reg. \$1.19	Now \$1.09

Plain Colored

### SHEETS & PILLOWCASES

72 by 108, Reg. \$3.99	Now \$3.29
81 by 108, Reg. \$4.99	Now \$3.79
Cases to Match, Reg. \$1.09	Now 99c

### Colored Fitted SHEETS

Bottom, Twin Size, Reg. \$3.99	Now \$3.29
Bottom, Double Size, Reg. \$4.49	Now \$3.79

### Special on TOWELS and WASHCLOTHS

TOWELS	
24 by 48	Reg. \$1.98, Now \$1.69
16 by 27	Reg. \$1.00, Now 85c
WASHCLOTHS	
Reg. 39c, Now	29c



Charge Accounts Welcomed  
We Deliver