

## Happenings of Long Ago

Bits of News Gleaned From Old Files Of The Eccentric

**39 YEARS AGO**  
December 31, 1919  
"A friend sends in this. Local opinion. Whiskey is going down these days! For what? Ask our Punition Editor. Just received."

"The Eccentric will make its usual Xmas present to all of its correspondents, of the paper one year to any address that may be sent in by them. Hurry up. When ordering, please say who received it this year."

"Boys and girls! Meet me at the Methodist Church Friday evening, Dec. 11. Santa Claus."

**39 YEARS AGO**  
December 5, 1919  
"After considerable delay the story of a young Birmingham artist finally comes to light. He had some paint and a brush. At the age of seven he was not interested in painting inanimate objects so he sought out something alive—living models. Only they were not quite models. They were chickens in the yard of a neighbor. Nor did he paint his impressions of the

chickens, but, rather, he applied the paint to the bewildered crackles themselves. The result was too dire to talk about."

**15 YEARS AGO**  
December 9, 1943

"Nine year old Billy Dodd, who after hearing his 11 year old brother, Jimmy, make a date to escort one of his little girl friends to the Saturday matinee, came out with the remark: 'Seems to me you're starting this sort of thing pretty early!'"

"The local ration board had little to be thankful for on Thanksgiving Day (as far as having the day off) for the board kept its regular office hours. However, they do have Christmas off. Isn't that nice?"

In 2 1/2 hours at Orchard Beach in the Bronx, N. Y., 7,136 Jehovah witnesses were baptized, making them ministers of the movement.

The first American earth satellite discovered a band of ionized atoms, or "plasma," beginning 600 miles above the earth.

## It's Decoration Time at Bloomfield Schools

Bloomfield Hills elementary school teachers and administrators gathered last week at Vaughan school for an art workshop. Approximately 80 women worked together, exchanging ideas and giving hints for Christmas decorations. Bloomfield Hills elementary school children art excused from classes early once each month so teachers can attend

instructional workshops. Preparing decorations are (left to right) Lois Smith, speech correctionist; Mabel Hammerbeck, art consultant; Margaret Petersen, visiting teacher; Kathleen Flint, elementary supervisor and Gladys Krause, Vaughan kindergarten teacher.

## Modern Expressways Increase Land Value

Modern expressways when completed will not only open up development in previously remote and inaccessible rural areas, but they will in most cases change comparatively low priced properties into higher priced properties. Dr. Frank W. Suggitt has reported to the Michigan Good Roads Federation.

Suggitt, head of the Department of Resource and Development of Michigan State University, said that the very few instances of depressed values due to the expressway to date are vastly overshadowed by other inflations of land values due to improved accessibility and convenience from the expressways.

He reported that he based his conclusions on actual observations and interviews along all expressways in the state and many others in the nation, actual cases to date, and numerous reports from throughout the country.

HE SAID the lack of suitable space for new industries, residence and commercial centers in most cities is forcing development to the outlying areas, and as a result new development along expressways is on the increase.

He reported that the decision to locate a 5,000 employee automobile assembly plant in the Novi-Wixom area is an example of an industrial decision to relocate in the outlying areas serviced by a new controlled access expressway.

The value of what was farm land just three years ago is staggering," he said.

In the same area also is being developed a \$40 million dollar residential subdivision which will include 2000 homes, an apartment complex, a shopping center, restaurant and park recreational facilities.

"Land values, on bare undeveloped land, increased 5 fold on this tract between the time the expressway was being surveyed and the time it was acquired for subdivision purposes. There will be an average 40 fold increase in value within five years on this tract when the housing and construction is completed."

SUGGITT SAID that a relatively undeveloped 50-acre industrial tract on the U.S. 12 expressway had a total selling price amounting to 25 per cent of the total cost of acquiring the right of way for the 10 miles of control access expressway which constitutes the Ann Arbor bypass.

"What is significant," he concluded, "is that the real increase in the value of land and development adjacent to expressways will represent a greater dollar value than the total cost announced 5-year expressway program when it is completed."

Montrose, near Aberdeen in Scotland, received a charter as a Royal burgh in 1284.

Schools and colleges in the United States and Canada reduced their losses from major fires in 1957 by more than \$1,500,000 compared with the previous year.

## VISIT OUR TREE LOT

Enjoy abundant shade next summer by planting one or more of our large shade trees now. The cost depends upon the size and variety of tree.

- Pin Oak
- Sycamore
- Moraine
- Locust
- Sugar Maple
- Linden
- Crimson King
- Silver Maple

### WHITE (PAPER) BIRCH

See Oakland County's largest selection of this much sought-after shade tree. From 2 to 10 stems.



## CHRISTMAS TREES

We will have our usual good selection of PINE • SPRUCE • BALSAM Large Specimen Spruce available for outdoor trees

**FOLKERS NURSERY CO.**  
Nursery Lot  
Cherry Hill  
Bloomfield Hills  
Garden City  
GA. P-1343  
Big Tree Lot  
Maple and  
Telegraph Rd.  
Bloomfield Hills  
MI 4-8727  
2 LOCATIONS  
Open Daily 10-6-Sunday 10-5

## BEAUTIFUL FORMICA DINETTES

AVAILABLE IN BLACK WROUGHT IRON AND CHROME

MADE TO ORDER

ANY **\$59.95**

Lifetime Guarantee On All Chrome

26 Styles — 26 Colors — All Stores



Open Daily 10-8:30

Tables made to order any size or shape, including round, square, rectangular and oval. 26 colors and designs can be selected with self-cleaning Formica. Chairs upholstered in 26 colors and designs. All colors and patterns. 18 different styles. 10 chairs in 10 styles. Includes including copper, silver and chrome.

Beautiful FORMICA BUFFETS Made To Order

**METALMASTERS MFG. CO.**

4600 N. WOODWARD, Near 14-Mile Road

Liberty 9-3011

## DRAPERY HARDWARE DRAPERY FABRICS

TRAVERSE RODS FOR BAYS, CORNERS, CEILINGS



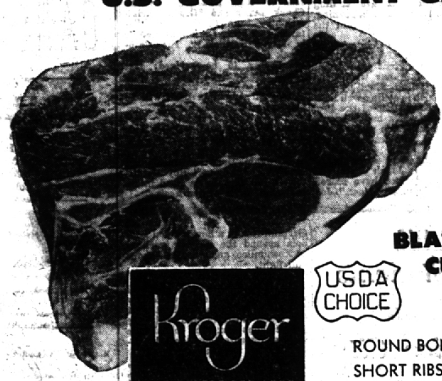
- ★ Window Shades
- ★ Bamboo Draperies
- ★ Venetian Blinds
- ★ Woven Wood Shades
- ★ Curtain Rods
- For Brisee-Cafe Curtains

Complete Line of Hooks, Weights, Threads, Pleater Tapes, Etc.  
CLEANING — REPAIRING

23535 Woodward Ave.  
(Near 9 1/2 Mile Road)  
Lincoln 1-4936

**BESSENGER'S**

## U.S. GOVERNMENT GRADED "CHOICE"



BLADE CUT  
USDA CHOICE

**CHUCK ROAST**  
**49<sup>c</sup>** LB.

ROUND BONE OR ENGLISH ROAST ..... LB. 59c  
SHORT RIBS OF BEEF ..... LB. 43c

## KROGER FREEZER SPECIALS

WHOLE U.S. CHOICE **BEEF CHUCK** 8 lb. Avg. LB. **47<sup>c</sup>**  
Plenty of Choice Roast  
WHOLE STANDING **RIB ROAST** 10-INCH CUT LB. **69<sup>c</sup>**

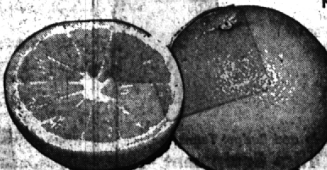
FRESH  
GROUND BEEF ..... LB. 59c  
WITH BONE  
GROUND ROUND ..... LB. 73c  
HYGRADE  
CORNED BEEF ..... LB. 69c

ARMOUR STAR  
**TURKEYS**  
20 TO 24 LB. **39<sup>c</sup>** LB.  
SIZE

**Spotlight Coffee**  
1 Lb. Bag **59<sup>c</sup>**

Betty Crocker  
**CAKE MIXES**  
White — Yellow — Devil's Food or Honey Spice  
**4 PKGS. \$1.00**

MORTON FROZEN  
BEEF — CHICKEN — TURKEY  
**DINNERS each 49<sup>c</sup>**



SUNKIST NAVEL - 113 SIZE  
**ORANGES ... DOZ 39<sup>c</sup>**

KROGER SLICED - MADE WITH BUTTERMILK  
**BREAD ..... 1-LB. LOAF 15<sup>c</sup>**

We reserve the right to limit quantities. Prices and items effective at Kroger in Detroit and Eastern Michigan through Saturday, Dec. 13, 1958.

NO OTHER BEEF SO FRESH  
CAN BE SO TENDER

U.S. GOVT GRADED CHOICE

STORE HOURS: **TENDERAY**  
Mon, Tues, Thurs, Fri, 9 a.m. - 9 p.m.  
Saturday, 9 a.m. - 9 p.m.  
7 INCH STANDING

**RIB ROAST**  
**79<sup>c</sup>** LB.

1. Only U.S. "Choice" Grade Beef is good enough for our Tenderay Brand. It's the mature, tender beef with a rich, full flavor.
2. Corn-fed, it's a costly method of feeding but your reward is tender, juicy beef with a fine marbling of fat.
3. Quick-Aged. Tenderay quick-aging preserves flavor and juices of fresh beef, yet gives the tenderness of aged beef.
4. Guaranteed tender. Each cut is guaranteed tender 10 times out of 10 or your money back.

**LIBBY'S FRUIT COCKTAIL**  
NO. 2 1/2 CAN **35<sup>c</sup>**  
NO. 303 2 FOR 49c

