

Separate Building For Academics, Suggests Woman

To The Editor:
The letters appearing in The Eccentric concerning the proposed Junior-senior high school, would indicate that taxpayers in Birmingham are interested in the current school situation and its problems. After carefully examining the floor plans of the new school, one can't help but conclude that more planning has been done for the

non-academic sections that academic ones.
Since 70% of our students are college bound, according to the figures of the school board, why isn't more space allotted to science laboratories and allied research fields?

THIS 70% of students does not use the space allocated to business education, speech, art, music, shop and gym enough to warrant them occupying the major share of the building.

Why, then, do we spend such large sums of money to take care of an occasionally elective subject of this 70% and the desires of the other 30%?

Facilities to house and equip these elective subjects are far more costly than simple classrooms. Is it necessary, then, to duplicate these facilities in every building?

IS IT NOT time that we give thought to a building built for less "frills" and more academic education? I would suggest that schedules of college-bound students be analyzed to see what elective subjects and what type and number of rooms would be needed to take care of these electives.

Perhaps a much different type

of "plant" could be utilized to better advantage by separating students according to their future plans.
Future bond issues would be more likely to pass if the taxpayers are convinced that a sincere effort is being made to meet the needs of all students with a minimum expenditure of money on duplicated facilities.

Mrs. HOWARD W. RIEMAN
10124 Locherbie
Westwood

We Don't Publish Anonymous Letters

To "A Very Irritated Citizen": You make some very interesting points regarding the investment the Birmingham board of education is making on the new athletic facilities at the forthcoming junior-senior high school. We'd like to publish them. We will if you will stop by our editorial office and sign your communication.

I have to know who you are, although we will publish your letter anonymously if you still prefer. Signed: The Editor
The Birmingham Eccentric

Students Are Enrolling Now for the Fall Term!
MONDAY SEPT. 8
Day, Half-Day and Evening Classes

Beginning courses in Business Administration, Higher Accounting, Professional Accounting, Junior Accounting, Speedwriting, Shorthand, Gregg Shorthand, Stenotype, Typewriting, Clerk-Typist, Comptometer and Calculator. The Business Institute offers thorough, practical business training which prepares one for congenial, well-paid positions. The school maintains free employment service.

APPROVED FOR VETERAN TRAINING

The Business Institute

7 West Lawrence Street, Pontiac Phone FE 2-3551
Call, Phone or Return This Ad for New Bulletin

Name Address

You will find many bargains in The Eccentric Classified Columns.

They're here—fresh out-of-this-world

Michigan Peaches

Buy 'em now for peak sun-ripened flavor...



Use 'em for freezing, canning.

PEACH CRISP
35¢ per 1/2 lb. peach
1/2 lb. peach
1/2 lb. peach
1/2 lb. peach

Highest Prices Paid For
SCRAP IRON—BRASS
COPPER—JUNK CARS & TRUCKS
FOR PICK-UP LI 6-0300 LI 6-7705
FARGO IRON & METAL
1801 Bellaire East 6. of 12 Mile Off Campbell Royal Oak

SCHOOL BELL SPECIALS
at our **Rexall DRUG STORE**
As advertised in THIS WEEK, PARADE, FARM JOURNAL, PROGRESSIVE FARMER, SUNDAY NEWSPAPERS

FREE!
RAND McNALLY **WORLD MAP** A 50¢ VALUE
OVERSIZE **ZIPPER BINDER** 1.75 Value SPECIAL **1.39**
Get better grades in geography, current events. Big 36 x 19 1/2" map in six color Years FREE with \$2.00 purchase of Rexall School Bell Specials on display in our store now.

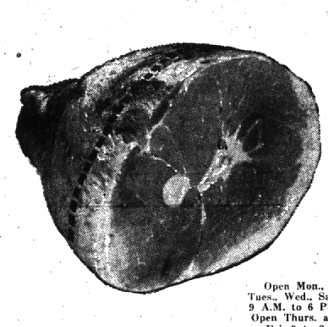
ROCKET MISSILE PENCIL CASE
With 4 pencils and plastic ruler
59¢
COLORED FILLER PAPER
10 1/2 x 8", 5-hole punch
25¢
CONSTRUCTION PAPER
9 x 12" sheets, colors
50¢
98c Value SHOE SHINE KIT
Dauber, brush, polishing cloth
69¢
MUCILAGE
With rubber spreader top
25¢
Super '21' Pen
IT'S NEW!!
\$5.00
Register Against Loss

Tired of ball points that skip?
Parker Jotter* is the **T-Ball Pen** answer!
ONLY **\$1.95**
PARKER'S new POROUS T-Ball point has TEXTURED surface that eliminates practically all skipping!
Actual Parker T-Ball point split and magnified

Special for School Opening!
Register your T-Ball against loss: Parker will replace your pen if lost within 2 years. Just choose any model T-Ball Jotter Pen. When you do, ask us for Parker's special 2-year Registration form. Fill it out and send to The Parker Pen Company, Janesville, Wisconsin. Spend no money. There is no charge for registration.
Parker will process your form and return it to you. If at any time within 2 years the T-Ball Jotter Pen you bought is lost, fill out the reverse side of form, have it notarized, and send to Parker with 50¢ (50¢ for \$2.45, 75¢ for \$2.95 model). You will receive a replacement of the pen that was lost. (No choice of colors).
Limited. Must be registered by October 31, 1958. Act now!

SHAIN'S Rexall DRUGS
YOU CAN DEPEND ON ANY DRUG PRODUCT THAT BEARS THE NAME REXALL

have yourself a holiday!



Borden better buys
Hi Ho! Come to the State fair and meet Elsie, the famous Burdon Cow.
Borden **CHEESE SPREAD** 1 1/2 lb. pkg. 59¢
An American taste treat for crackers.
JAR CHEESE . . . 2 5-oz. jars 49¢
Borden pineapple or olive pimento.
STARLAC 38-oz. 89¢
Borden's instant — sweet milk taste.

Swift's Prem prem
12-oz. can **39¢** SAVE 12¢
Swift's brand. Delicious diced and added to your favorite salad.

hungarian ring coffee cake . . . each **39¢** SAVE 10¢

EMBASSY SALAD DRESSING pt. 19¢
For dressing up your tuna this is the Ambassador of flavor. It's the only way to top off tuna.

NORTH BAY TUNA . . . 2 6-oz. cans 35¢
Grated to blend with Embassy for super-sandwichings.

Tired of emptying your pockets to fill 'er up? Join the Swing to **Rambler**
Tops all others in sales gains because it's tops in economy!

Rambler sales are up more than 70% . . . the economy of small European cars. Prove to yourself why! Only Rambler combines the room of big American cars with the economy of small European cars. Prove to yourself why! Only Rambler is the best car value. See your Rambler dealer.

BIRMINGHAM NASH, INC.
666 S. Woodward, Birmingham MI 6-2900

spare ribs . . . lb. **59¢**
No bones about it, they're good — baked, barbecued or broiled. Make that special sauce and barbecue.
COLD CUTS . . . lb. **59¢**
Three kinds for sandwich delights.
SKINLESS WIENERS lb. **55¢**
The easy way to have fun on a bun.

SAVE TWICE!
GET TOP VALUE STAMPS PLUS KROGER BEST BUYS!

FULL SHANK HALF SMOKED ham Lb. **49¢**
When buying ham be sure of the best buy possible. The full shank half has more of the choice center slices that you would not normally get with the shank portion.
CENTER SLICES lb. **99¢**
Globe 'em to bring out all that honey-hickory smoked flavor. Honey 'n' hickory in every tasty bite.

go krogering
(THE HAPPY WAY TO SHOP)
for these labor-saving specials!
Michigan home grown harvest sale!

FRESH SWEET corn doz. **29¢**
Taste the true flavor of sweet corn. Kroger ices it right in the field to capture its delicate sweetness for you.

PASCAL GELERY 15¢
Snapping crisp tender green stalks.

POTATOES 15-lb. bag 49¢
U.S. No. 1 Michigan

YELLOW ONIONS . . . 2 lbs. 15¢
The chef's favorite — globes 'n' gold.

potato chips . . . 1-lb. bag **59¢**
Everybody's favorite. Crisp and crunchy. Salted to please.

pork & beans . . . 1-lb. can **10¢**
Kroger brand—save 5c on 2 cans.

ice cream 1/2 gal. **59¢**
Country Club—assorted flavors.

spotlight coffee 1-lb. bag **69¢**
Buy the bean, grind it, fresh.

We reserve the right to limit quantities. All prices and items effective through Saturday, August 30, 1958 at all Kroger stores in Detroit and Eastern Michigan.