

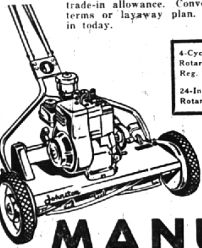


### Try Moist Burlap

When re-seeding scorched areas, lawn experts recommend covering planted areas during daylight hours with moist burlap. This brings grass up faster and protects it in early stages.

## Johnston POWER MOWER

If there's an old mower around the house, we'll give you a big trade-in allowance. (Convenient terms or layaway plan. Drop in today.)



4-Cycle Briggs & Stratton Rotary Mower **\$79.95**  
Reg. \$84.95  
24-Inch Riding Rotary Mower **\$189**



## MANUS

3116 N. Woodward 7878 Orchard Lake Rd.  
Between 12 Mi. & 13 Mi. Rd. at Northwestern Hwy.  
Royal Oak LI 9-2410 Farmington MA 6-5335

## OUTDOOR LIVING

### Maplebrook Branch Sets Flower Show

Members of the Maplebrook branch of W.N.P.G.A. will have a flower show Wednesday from 2 to 3:30 p.m. at the home of Mrs. Will St. Clair, 158 S. Williamsbury, Birmingham. Two floral arrangements for indoor and outdoor use will be entered by each member. Official judging will take place on all entries. The general public is invited to the meeting. Mrs. Joseph Mooney is chairman.

### Water ...

It is needed to keep grass green. If the weather is dry and when a lawn is most enjoyed, and green grass always beats brown. Water any time convenient. Apply it slowly—to faster than your lawn can swallow. It is not true that you must water deeply or not at all, claim lawn scientists. Surprisingly small amounts of water can green up well-fed grass they report. If you regularly replace moisture as upper one-half inch or so dries, you will keep your grass greener for smaller total water consumption.



### More Patio Seating

Need more seating accommodations in your small patio area? One architect designed a banquette type bench to follow slope two sides of the patio. The seat was made up of five Douglas fir 2x4s with a 2x10 fir backrest. The backrest was tilted to make it more comfortable. Seating was provided for a dozen people, with little if any of the patio area robbed. The patio deck boards were also fir 2x4s but they were laid with the narrow side up and spaced slightly to allow water runoff.



### Remove by Evening

When using moist burlap to encourage freshly seeded scorched areas in the lawn, be certain to remove by evening to prevent possible rot and fungus from setting in during the cool darkness.

## FOR EXTRA SPACE



### with Curtis Convertible windows

**CURTIS WOODWORK**  
WE SELL CURTIS WOODWORK  
**SILENTITE** heart of the home

**CHURCH'S INC.** • LUMBER • BUILDERS SUPPLIES • FUEL  
107 S. Squirrel Road, Auburn Heights, Mich. FE 2-0233

## DOWN TO EARTH

# Green Garden is Restful for You and Guests

This is a good time of year to evaluate your garden with an eye toward improving it in 1959. Right away, I imagine, you will say, "It's for sure I'm going to eliminate some of the work."

More power to you. It's no disgrace to push back the grass line. Some of the mixed garden in this area are "green gardens." A green garden is peaceful. Visitors don't say, "Poor Mary, I don't see how she maintains such perfection."

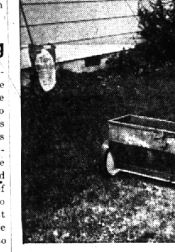


**Mr. Burlingame**  
Father Time is looking my way more and more. But I think a green garden is elegant. Trees trimmed high. A well groomed lawn. Ivy for a border in front of shrubs. Ground cover where the grass won't grow. And ornamental shrubs and small trees to give color accent.

In this kind of garden the pattern is very important. Evergreen should be as thick as the hedge will allow and flowering plants carefully placed to provide accents at various times for interest.

If YOU should want a six-foot hedge in a hurry—evergreen and about eight inches wide—consider planting Bartie ivy about four apart and training it on parallel strands of wire attached to a pipe.

**Mowing ...**  
It should be 25 to 50 per cent higher than in cool weather to allow more insulation against summer heat. Higher cutting also reduces moisture loss from the soil.



### Limestone Recommended

Application of 50 to 75 pounds of ground limestone per 1,000 square feet is recommended by lawn experts. This can be applied any season with benefits produced over a period of time.

## ASPHALT PAVING

• DRIVEWAY SPECIALISTS

- RESIDENTIAL
- COMMERCIAL

Free Estimates  
**LI 6-6731**

**DAVELUY ASPHALT PAVING**

## CRAB GRASS

### Your Lawn Sick - Yellow - Full Of Weeds - Crab Grass - Insects?

WE SPECIALIZE in lawn spray feeding, weed, crab grass and pest eradication, build healthy turf, take guesswork and worry off your shoulders.

NEW SCIENTIFIC materials and equipment provides you a lush green, healthy, pest-free lawn all season long without fuss, muss or worry on your part, and at lower cost than you can do it yourself. Time-tested and proven. Results guaranteed. Call us for free estimates. You are under no obligation.

**FERTILIZE - BLOOMFIELD LAWN CULTURE**  
LI 8-0171

to evaluate your garden with an eye toward improving it in 1959. Right away, I imagine, you will say, "It's for sure I'm going to eliminate some of the work."

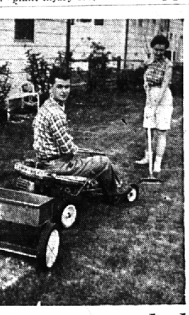
More power to you. It's no disgrace to push back the grass line. Some of the mixed garden in this area are "green gardens." A green garden is peaceful. Visitors don't say, "Poor Mary, I don't see how she maintains such perfection."

**Mr. Burlingame**  
Father Time is looking my way more and more. But I think a green garden is elegant. Trees trimmed high. A well groomed lawn. Ivy for a border in front of shrubs. Ground cover where the grass won't grow. And ornamental shrubs and small trees to give color accent.

In this kind of garden the pattern is very important. Evergreen should be as thick as the hedge will allow and flowering plants carefully placed to provide accents at various times for interest.

If YOU should want a six-foot hedge in a hurry—evergreen and about eight inches wide—consider planting Bartie ivy about four apart and training it on parallel strands of wire attached to a pipe.

**Mowing ...**  
It should be 25 to 50 per cent higher than in cool weather to allow more insulation against summer heat. Higher cutting also reduces moisture loss from the soil.



### Limestone Recommended

Application of 50 to 75 pounds of ground limestone per 1,000 square feet is recommended by lawn experts. This can be applied any season with benefits produced over a period of time.

## SPECIAL

**ALUMINUM COMBINATION STORM DOOR**  
1" thick Full panel hinge Vinyl weather stripped. Delivered only. **\$2795** plus tax

**ALUMINUM COMBINATION STORM WINDOWS**  
Removable inserts from inside. Fully self storing. Installed. **\$14.50** plus tax

## STORM SEAL CO.

3074 ROCHESTER ROAD—1 Block N. of 16-Mi.  
A.M. to 6 P.M. Daily—Open Sundays 12 to 4 P.M.  
MU 9-1900 MU 9-0902

## Winter Seal Lifetime Extruded ALUMINUM WINDOWS and DOORS

**Tilt Line**  
Combination Windows

Call today

Now Only **\$49.95** Installed

QUALITY built into every unit.  
Buy now & Save 27% off list on windows

## KAYE SASH & SCREEN

LI 5-0600 1523 N. Main, Royal Oak LI 5-1902

## WE'RE PROUD OF OUR REPUTATION!

The art and skill of compounding medicines, and the study of their curative powers, is an ancient one that progresses every day! We study constantly to keep up with medical research. We work in close cooperation with your physicians; and each prescription is always double-checked for accuracy!

MI 7-0334 HOURS: Mon. thru Sat. 9 a.m.-10 p.m. Sunday 10 a.m.-6 p.m.

## Cranbrook Drugs

2511 W. Maple (Corner Oakridge) Birmingham

## Open SUN. 10 to 4

**MAC-O-LAC FORMULA 99**  
Reg. 7.95 **\$5.88** gal.

**1c SALE!**  
PIONEER HOUSE PAINT Flat—Semi-Gloss—Enamel  
Buy 1st gallon at reg. price 9.95. Buy 2nd gallon at 1c.

**HUGE 17" PULLDOWN CEILING FIXTURE**  
Give a decorative touch to your dining room, kitchen, any room.  
reg. 24.50 **10.95**

**PORCH FIXTURES**  
reg. 3.95—1.95  
reg. 5.75—2.85 **50% OFF**

Outdoor POST and LANTERN  
Model 394 **\$9.98**  
Model 395 **\$11.95**  
24 other models at 50% off

WALL BRACKET SCISSOR TYPE  
adjustable to all positions over desk, bed, etc. Reg. 7.19.  
**NOW 3.59**

EASY TERMS

## DALY'S

4518 N. Woodward HARDWARE & FLOOR COVERING  
Royal Oak Open Daily 9-6; Sunday 10-4  
Between 13 1/2 and 14 Mile Rds. LI 9-9926

## BUY NOW and SAVE NOW

BIG SAVINGS at **FEDERAL** Hardware and Supply

Enjoy the Doing—**SCOTT'S SPREADER**  
Give your soil the skill of an expert.  
16" Now \$10.95  
18" Now \$13.95  
21" Now \$19.95

## SCOTT'S ANNIVERSARY SALE . . . FOR A FINER LAWN, BUY SCOTT'S

Summer fertilizing with New **SCOTT'S TURF BUILDER**  
MAKES LAWNS 2, 5,000 sq. ft. Bags NOW **\$8.35** BETTER reg. 8.85

every package dated for your production . . . you know the soil will give.

**SCOTT'S SEED**  
FAMILY SEED **\$5.95** 5 lb. box reg. 6.95—NOW  
PLAY SEED **\$3.75** 5 lb. box reg. 4.75—NOW  
PICTURE SEED **\$7.50** 5 lb. box reg. 8.50—NOW  
BLUE GRASS BLEND **\$4.95** 1,000 sq. ft. reg. 5.95 NOW

ENJOY VICTORY OVER Ugly Crabgrass . . . USE SCOTT'S **SCOTT'S WEED & FEED CLOUT**  
5,000 sq. ft. Bag **\$5.25** in 10 bag lots  
5,000 sq. ft. bags **\$6.15** in 10 bag lots

**EL 6-7300**

**FEDERAL** Formerly Federal Merchandise Mart  
SOUTHFIELD RD.  
Open Thurs., Fri. and Sat. Evenings  
OPEN SUNDAYS, 10 A.M. to 4 P.M.