

MARK WESSEL
 • Pianist • Composer • Teacher
 Fall Lessons Resume Sept. 24th.
 3815 Old Indian Trail
 Orchard Lake FE 4-5666

SCREENS and STORM SASH
 FLUSH DOORS
 • Combination Doors and Windows
 • Cupboard Doors and Drawers
 • Paved—Kia Dried Lumber
 1184 Grant MI 4-0424
WOODCRAFT CO.

HOME LOAN

Principal •
 Interest •
 Taxes •
 Insurance •

• The all-in-one home loan payment per month spares you bookwork bother... budget-figuring. Each payment reduces both principal and interest... taxes and insurance, too.

Come see us today.

Stop in at our convenient office or open your account by mail. Phone or write us for information.

CAPITOL SAVINGS

27215 SOUTHFIELD JUST NORTH OF 11-MILE
 Mailing Address: Lahrup Village EL 6-7770
 Member Federal Home Loan Bank System

Be Wise—Use Classifieds!

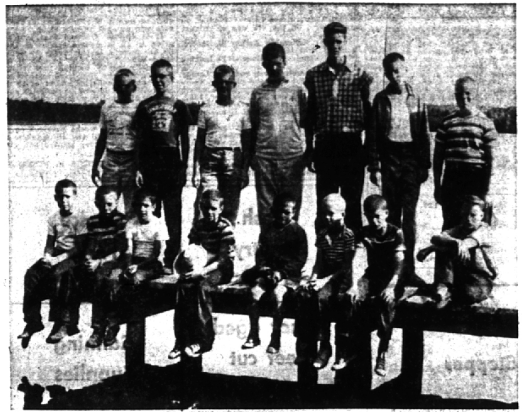
An Added Attraction!

Now at **MULHOLLAND'S**—
 The famous line of clothes by **Pendleton**

There's only one **Pendleton** always virgin wool

DON'T FORGET!
 TAKE ADVANTAGE OF THE MANY SUPER SAVINGS DURING OUR **AUGUST WHITE SALE and ANNIVERSARY SALE!**
 NOW IN PROGRESS

F J Mulholland COMPANY
 133 N. WOODWARD AVE.



B'ham Delegation at U.P. Camp

Twenty-nine Birmingham area boys are among those enrolled at Camp Ne-Kana, near Manistique, this summer. Included in the group of local youngsters at the Upper Peninsula camp are (sitting, left to right) Bob Adams, Flip Lusk, Mike Adair, Jim Schmier, Bob Haines, Chip Gorman, Reg Reynolds and Dean Nickerson. Others are (standing, left to right) Craig Johnson, Richard Adams, Pike John, John Mow, Tim Tolle, Scott Robeson and Carl Elmes.

LEGAL NOTICES

CITY OF BIRMINGHAM, MICHIGAN
 NOTICE TO PROPERTY OWNERS
 WALKERS STREET SIDEWALK
 (North of Haines)

The City Commission of the City of Birmingham will meet Monday, August 22, 1956, at 8:00 p.m. in the Commission Room in the Municipal Building to consider and approve the plan to construct certain improvements on Walker Street, created to define the east of intersection of sidewalk on the west side of Walker from approximately 112 1/2 feet north of Frank to approximately 126 feet south of Frank, and construction of sidewalk on the east side of Walker from Frank to Haines.

The Commission proposes to create a special assessment district to defray the cost of this construction and maintain special assessment district shall consist of the following described property:

Lots 2 to 15, inclusive
 Lots 16 to 37, inclusive
 Sublot B, Block 1, Addition
 Lots 1 to 11, inclusive
 Lots 12 to 21, inclusive
 A. E. Peters Subdivision
 Lots 1 to 21, inclusive
 Lots 13 to 21, inclusive

Plans and estimate of cost of this project are filed with the City Clerk of the City of Birmingham for examination by the public. Individual assessments are not now available. They will be computed by the Assessor after August 25, 1956, if the necessary fee is received.

New Apartments AVAILABLE

1/2 Mile Rd. (Woodward Hgts.) & Dequindre
 1/2 Mile Rd and Ryan Road

1 and 2 BEDROOMS

INCLUDING HEAT, HOT WATER, ELECTRIC STOVE, REFRIGERATOR

Residential Manager
 LI 7-9405 or UM 3-4214

BIG NEWS for BIG MEN!

(or anyone who likes to sleep in a big way)

If you're too tall for an average size bed, or just enjoy the luxury of extra roominess when you sleep, we've the answer for you! Treat yourself to the wonderful, relaxing comfort of an extra-size mattress. We have a complete line to show you.

TWIN or FULL x 80
\$139.00

CARPENTER'S SLUMBER SHOP
 28879 Greenfield (south of 12 Mile) LI 4-9133
 Open Thurs. & Fri. Till 9 P.M.

Bird in Virginia

FORT BELVOIR, VA.—Second Lt. William C. Bird, son of Mr. and Mrs. Joseph L. Bird of Lahrup road, Birmingham, recently completed the officer basic course at the engineer school in Virginia. Bird received basic branch training in the duties appropriate to a company grade engineer officer.

Aug. 21, 1956 THE BIRMINGHAM (MICH.) ECCENTRIC 3-8

DRYERS VENTED \$15.95
 all aluminum construction. Stop lint and moisture
Merit Electric Co. LI 1-2284

SUMMER TUNE-UP SPECIAL

1. TEST Compression
 2. CLEAN and SPACE Spark Plugs
 3. INSTALL NEW Distributor Points
 4. INSTALL NEW Condenser
 5. ADJUST Carburetor
 6. INSPECT Fuel Pump and CLEAN Sediment Bowl
 7. TEST Generator and Charging Rate
 8. CLEAN Air Filter
 9. ADJUST Fan and Generator Belt
 10. INSPECT Voltage Regulator
 11. TEST Starting Circuit

\$10.95 Complete August Only

DRIVE IN TODAY

JO 4-6266 **HAROLD TURNER, INC.** MI 4-7500
 464 South Woodward Ave. Birmingham, Michigan
 SERVICE DEPT. OPEN 7 A.M.—9 P.M.—7 A.M.—1 P.M. SAT.

BEAUTIFUL FORMICA DINETTES

AVAILABLE IN BLACK WROUGHT IRON AND CHROME

MADE TO ORDER

ANY Shape Size Style **\$59.95** and up

Lifetime Guarantee On All Chrome
 26 Styles — 26 Colors — All Stores

Size 30 x 48 with Formica Top and Formica Edges

Tables made to order any size or shape, including round, square, oval and oval. 26 colors and patterns to select from. Tables can be equipped with self-storing leaf. All table aprons and edges are of Formica. Chairs upholstered in 24 different Duran materials—24 colors and patterns, 16 different styles. All chrome is triple-plated, including copper, nickel and chrome.

ROOM DIVIDERS MADE TO ORDER

Open Daily 10-8:30

PECK'S
 Cleaning and Pressing
 Cash and Carry
 Suits—Top Coats—\$1.70
 Plain Dresses (delivery service \$1.80)
 108 So. Woodward Ave.
 Call now for pickup and delivery MI 4-7724

Beautiful FORMICA BUFFETS Made To Order
METALMASTERS MFG. CO.
 4600 N. WOODWARD, Near 14-Mile Road Liberty 9-3011

Sweaters . . . Sweaters . . . SPECIAL PURCHASE

100 % Sheland bulky knit crew neck, truly outstanding. Formerly \$12.95 — Now \$8.00

Crew Neck Sweater, 100% Lambs Wool was \$8.95 — now \$5.00

Cardigan, 100% lambs wool trimmed cardigan, four buttons, very nice. Formerly \$12.95 — Now \$8.00

AUTHENTIC . . . NATURAL . . . SHOULDER . . . CLOTHING . . .

TWEED WORSTED SUIT

This garment is an excellent back-to-school companion, tailored along traditional lines with hook vent and lap seams. This muted tweed worsted will give the ultimate in service. \$60

112 S. WOODWARD AT MAPLE MI 4-7060

Gwynn's
 "A Well Fitted Garment is Our Trademark"