

Capacity Classes in Hills Even with New Buildings

Even with a new junior high, a new Pine Lake elementary school and an elementary addition at Eastover school all scheduled to open this September, Bloomfield Hills schools will be filled to capacity. Superintendent Eugene L. Johnson said this week.

An enrollment study and official census figures indicate that the junior high will be filled to a capacity of 650 and even the new elementary units will not relieve entirely the congested conditions at Vaughan and Wing Lake schools, Johnson told the Bloomfield Hills board of education.

THE BOARD decided immediately to request a Michigan State University survey team to make another study of district enrollment trends. The present bond building program was the result of two previous studies and recommendations made by Michigan State experts.

By September the total enrollment figure is expected to exceed 2,800. Irving Menacci, assistant superintendent, contrasted this

Good Desserts

Cookies with cereal, raisins, nuts and other nutritionally good ingredients make excellent school lunch box desserts. When served with milk, which is always obtainable at school, they provide a happy topper for the noontime meal and are easy to carry.



Campus Musts

A **CAMPUS MUST** is the London Fog raincoat worn by Bob Parker of Birmingham High. The \$29.75 coat is worn with an Ivy League shirt of Pima cotton, \$6.95, and Ivy League trousers, \$10.95. All of these clothes can be purchased at Peck's, 108 S. Woodward, Birmingham.

with the 1955-56 school year September enrollment of 1,480, pointing out that in three years the total has almost doubled.

The junior and senior high schools are expected to have enrollments of 650 each. Between 1500 and 1600 are anticipated in the elementary schools.

GROWTH in the school district has been rapid since 1953 when the total was 862. In 1954 it climbed to 1,056. Last September the total was 2,469. By this June the enrollment stood at 2,544.

This fall, Johnson said, classrooms will be "cranking a little over" the 25-pupil maximum the board has been striving to maintain.

He pointed out that any future expansion probably will not be so extensive as recent building programs as new schools have been designed to accommodate additions.

GYMNASIUMS and cafeterias were planned to take more students, so that most schools need only classroom additions.

The district also has an elementary school site at Quanton and Bayley roads acquired last year after condemnation proceedings. It is located nearly in the center of the district and was chosen as ideal to relieve congestion at Vaughan and Wing Lake schools.

Court proceedings delayed plans so long, however, that the board was forced to proceed with the long-planned Pine Lake school and an Eastover addition.

ACTUAL CENSUS figures taken in May 1958 show a total of 3,662 children between the ages of 5 and 19 in the district. This is an increase of 510 over last year.

Added to the district's problems is the fact that since July 1 it is operating with a budget deficit. With income estimated at \$1,040,199 the budget of \$1,384,950 will fall short by \$344,750 expected to be pared to \$164,750 by a balance from 1957-8.

This situation is being studied by a new financial advisory committee of citizens in the district headed by William Donnelly. Donnelly, a certified public accountant, formerly was with the FBI and has been associated with General Electric and Ford before his present financial advisory position with Chrysler corporation.

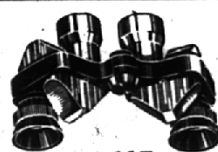
HE PERSONALLY is studying the district's financial situation and plans to confer with his committee to make a financial program recommendation. Serving with him are Lynn Townsend, Frank Arnoldi, Raymond T. Perring, Graham John Graham and A. C. Girard.

Lighter Sweaters Tops for School

Lighter-weight wool sweaters are just the thing for a boy to wear to school under his outer-coat, especially if he likes to keep his sweater on in class.

The pullover is the best bet and has the greatest usefulness if it is in a color like natural or navy that can be worn appropriately with other apparel.

Also very popular with young men is the new low-button cardigan with the long V-opening. And for outdoor play a boy will certainly be happy in one of the new warm, all-wool bulky-knit sweaters.



MINIATURE

Binoculars

for Football Games!

6 power \$15 & tax 7 power \$21⁵⁰ & tax

OCULISTS PRESCRIPTIONS FILLED

• Telescopes
• Magnifiers

• Binoculars
• Lenses and Frames Replaced

SEDGWICK OPTICIANS

350 E. Maple, Birmingham

MI 4-8002

Back to School



IVY LEAGUE

SUITS

Mellowloom Flannel

reg. 57.50

Special \$49⁹⁵

Sport Coats

\$40⁰⁰

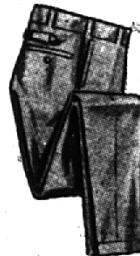


IVY LEAGUE

SLACKS

\$16⁴⁵

\$18⁹⁵



Jayson

LAUNDEZE SHIRTS

All cotton
needs no ironing

"as fine a shirt as you can buy"

\$3⁹⁵

\$5⁰⁰

Look to Gossard for BACK-TO-SCHOOL



Gossard Bra — embroidered top trim. Ask for #1540 \$2.00

Gossard-deb Pantie Girdle—boneless pull-on of elastic net and satin elastic. Shaped cut of leg gives freedom from binding. Ask for #810 \$6.50

Gossard Bra — cotton reinforced undercup. Ask for #1509 \$2.50



The Glassford Shop

Personalized Service by Graduate Corsetiers

S & H Green Stamps

135 Pierce

MI 4-5244

PECK'S MEN'S WEAR

108 S. Woodward Open Every Friday Evening Till 9

MI 4-7724