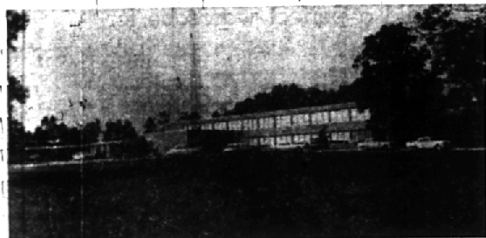
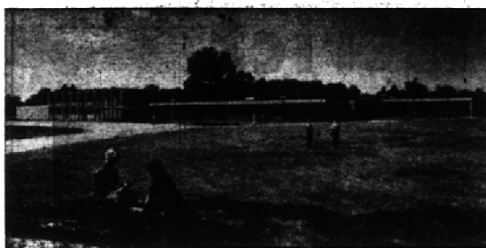


7 Schools Serve Hills Students

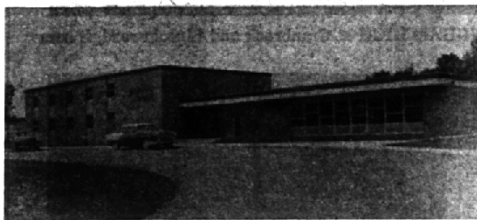
Bloomfield Hills schools districts have been revised somewhat since last year because of the new Pine Lake school at the western edge of the district and the Eastover addition on the eastern side. Revising the boundaries will relieve congestion at Vaughan and Wing Lake schools. The map below shows from which areas children will attend each elementary school.



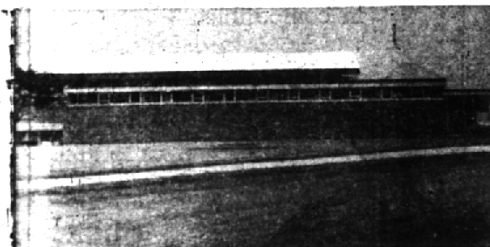
BLOOMFIELD HIGH at 4200 Andover and Long Lake road, Bloomfield twp.



HICKORY GROVE elementary at 2800 Lahser between Long Lake road and Square Lake road, B'field twp.



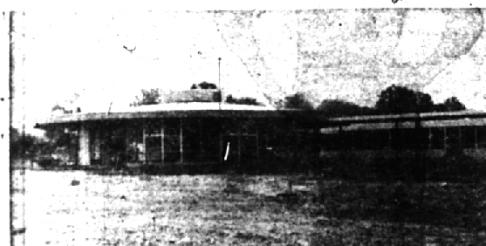
EASTOVER elementary at 1101 Westview road off of Adams, B'field twp.



BLOOMFIELD HILLS junior high at 4200 Quarton road and Wing Lake, B'field twp.



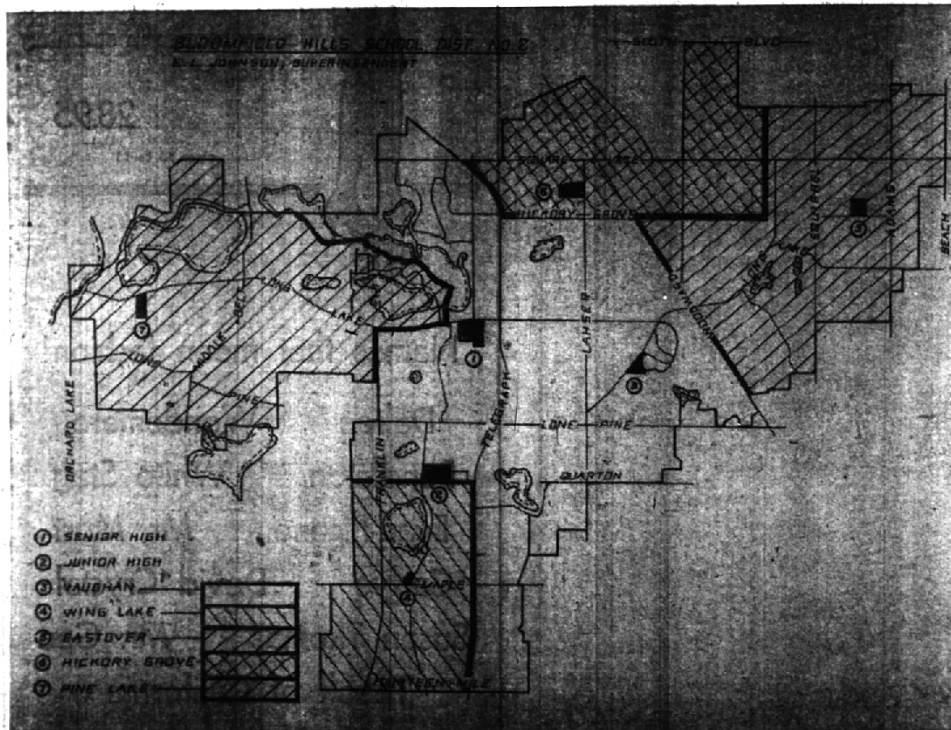
VAUGHAN elementary at 1060 Vaughan road, B'field Hills



PINE LAKE elementary at 3333 W. Long Lake, between Middlebelt and Orchard Lake, W. B'field twp.



WING LAKE elementary at 6490 Wing Lake road and Maple, B'field Twp.



New Ideas Key Teen Wardrobes

Fashion-minded high school students will start the new school year in a blaze of color. Brown, in hues of russet or gold, reds ranging from the orange cast to the blue cast, blues from the bright turquoise to the purplish family and greens running the gamut from bluish to yellowish all encompass the fall foliage colors of nature.

These many colors are most often combined in tie print cottons, florals, mosaic motifs or Persian designed prints. Hot mixtures flashing with fashion excitement are often seen in oversized black wool plaids in skirts, coats and jumpers.

Certainly the big excitement is the chemise. Some girls have tried it, others don't dare and still more haven't decided at all. Here's a word of encouragement to the latter two groups. The chemise is again fashion news for fall. It has been reendorsed by Paris and has met with success wherever it has been given a chance. It is a becoming silhouette that can inspire compliments.

Contrary to popular belief, the chemise is not a sack dress. It does not hang in a loose, baggy way; it has form. When you go to try on the chemise, you may have to try many more styles than you ordinarily do.

But eventually you will hit the right one for you. When you see it on, correctly fitting, you will realize how attractive this style can be.

The straight line is the fashion line this fall. In sportswear, jumpers in huge blanket plaids show off bright patterns when cut simply and straight. Skirts range from straight to the semi full "trapeze" style. Pleated skirts mix well with the long line blouson.

Sweaters often have pockets and are longer in length. Their bulky knits aid them in falling straight and loose. News in the yarn field is mohair which gives the sweater a lumpy but soft hand.

Accessories are great fun in sportswear and you can mix colors to achieve the perfect combination. Try knit hose in brilliant colors to match your sweater or coordinate with a plaid.

This is the season for, of course. Don't be afraid to try the new in color, "chemiserie", and fun accessorizing.

Projects

(Continued from Page 1)

expected for Bloomfield Hills junior high's first semester—school officials adding that the new unit, at Quarton and Wing Lake roads, was designed only for 600 youngsters.

Costing \$1,700,000, the school was designed by STM. Construction began late last fall.

The junior high—the ninth grade will no longer be a part of the Hills high school—contains 23 teaching stations.

ALSO IN THE Bloomfield Hills system is the new Pine Lake elementary school on W. Long Lake road. The \$375,000 unit, with seven teaching stations and an expected enrollment of 175, was begun early this spring.

Also opening this fall, in Bloomfield Hills city, is the huge new Sacred Heart convent which, according to the superior, Rev. Mother K. Wensboro, will accommodate 250 pupils, kindergarten through high school.

St. Columban church's first classes begin this fall with the opening of its new school, costing more than \$200,000. Four of the seven classrooms will be utilized the first year, with 170 pupils in the first, second and third grades expected to enroll.

A SEVENTH project is also underway. Our Shepherd Lutheran church, Fourteen Mile road, has begun work on a \$30,000 classroom addition to its school.

One-Third Women

Mounting college enrollments in the United States, which topped the three million mark last year, included almost a million young women. Between 1965 and 1970 it is expected this high mark will have doubled.