

**ASPHALT PAVING**  
RESIDENTIAL — COMMERCIAL  
FREE ESTIMATES

TERMS GUARANTEE

**DIAL PAVING CO.**

610 N. Woodward, Birmingham MI 4-3323

Remodeling Notes:

## BIG PROGRESS ON WALL CABINETS!

### New lower prices on Famous Scotts® GRASS SEED

Scotts costs less per lawn because you need so little of this all-perennial, 99.91% weed-free, sure-growing seed. Choose Scotts in the brand that best suits your need.

**PICTURE® Brand**  
dress-up lawn  
1.75 and 8.50

**FAMILY® Brand**  
good looks, good wear  
1.45 and 6.95

**PLAY Brand**  
quick, sturdy turf  
1.00 and 4.75

It pays to fertilize when you seed. New Turf Builder is good insurance for quicker sod.

### BUSINESS AS USUAL

While Remodeling to Make Us

## BIGGER AND BETTER THAN EVER HUSTON HARDWARE CO.

Birmingham's Oldest Hardware Store

205 N. Woodward  
Hours: 8 to 5:30

MI 4-7330  
Friday, 8 to 9 p.m.

## TULIPS AND CRABGRASS

TULIP EXHIBITION — THIS WEEK  
THURSDAY - FRIDAY - SATURDAY

Now is the time to take steps to eliminate crabgrass from your lawn.

Two materials are available for application now as PRE-EMERGENCE controls:—

PAX—a new product containing lead arsenate and other materials.  
CHLORDANE—72°

TULIP EXHIBITION —  
BLOOMS FROM WEST COAST

PAX is applied with a fertilizer spreader, is poisonous and is to be used with care and has given splendid results in other parts of the country.

CHLORDANE (72°) has given very good control in this area although during the last 4 years it has been applied at only 1.6 of the present required amount per sq. ft.

### EXQUISITE DISPLAY OF TULIP BLOOMS

Cost of these controls for 5,000 sq. ft.:  
PAX—\$31.00  
Chlordane—\$19.50

60 VARIETIES OF TULIP BLOOMS  
ON DISPLAY FOR YOUR EDUCATION  
& SELECTION

Application Directions:—

- PAX 1. Foliage must be dry.
  2. Apply after mowing.
  3. DO NOT apply if fertilizer has been used.
  4. DO NOT apply if other chemicals have been used.
  5. Water immediately after applying and before pets or children are allowed on the area.
  6. DO NOT SEED after application.
- CHLORDANE 1. Apply with plenty of water.  
2. Best applied after mowing.  
3. No limitation on other fertilizers or chemicals.  
4. Water it off the grass because it works on the soil—not on grass blades.  
5. Not dangerous to pets or children if used as directed.

TULIPS - TULIPS - TULIPS  
COME - AND SEE - THEM  
THURS., FRI., SAT.  
AT . . .

## McCLELLAN-BALL CO.

YARD GARDEN

SUPPLIES

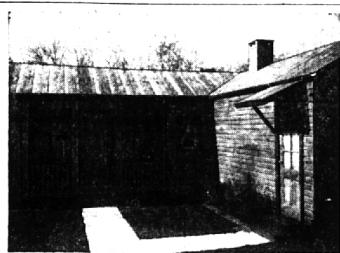
FARM KENNEL

BIRMINGHAM, MICHIGAN

Phone MI 4-1133

850 S. Woodward

2-D THE BIRMINGHAM (MICH.) ECCENTRIC Apr. 17, 1958



### Dramatic Change

Before facelifting, this house (top) was an extreme example of deterioration in exterior appearance. Now (bottom), with structural changes and application of siding, it is dramatically modern.

### Add Plantings To Enrich Your Property

A living fence of shrubs or trees assures privacy for the home owner, helps to shut off street traffic noises, dust, and can eliminate an unsightly view of any bordering property.

These living fences may be low or tall, flowering or non-flowering, evergreen all year, or deciduous.

THEY CAN BE made to fit any shape desired, may require little

maintenance, need not even be clipped if the natural shape is desired. Some species grow low with out much attention at all. Plants for hedges have been divided into the following groups for various purposes:

1. Evergreen plants which keep their leaves all winter.
2. Dense plants with thick foliage that need very little care.
3. Thorny plants which make excellent barriers.
4. Low plants that need little or no clipping.
5. Flowering, usually informal in nature, needing to be clipped only once a year.
6. Colored fruits for brightness and interest.
7. Plants for poor soils and growing conditions.
8. Narrow, columnar and upright plants.
9. Plants for the more adverse

### SPRAYING

#### ELM TREES

Shade Trees, Shrubs, Fruit Trees and Orchards  
Lawn spraying for weed control. Also spraying for mosquito control.

Michael J. Jasso  
10 BILTMORE Phone  
Birmingham MU 9-2700

### Lawn Mowers

#### Sharpened

#### ENGINE TUNE-UP

#### AND REPAIR

Fast, Efficient Service

MEL'S AUTO SERVICE

79 E. Maple Rd., N.E. Livorno

Phone JU 8-3292

## SWIMMING POOLS

Cleaned, Painted

Pumped Out

Filters Overhauled

Weekly Vacuum Service

Experienced — Insured — References

## DOTCO

Swimming Pool Service

LI 6-0990

FE 8-3487

### EXTRUDED ALUMINUM COMBINATION STORM WINDOWS AND SCREENS

With or without self storing features.

BE UP TO DATE FOR '58!

See Our New ALL WHITE

Aluminum Combination Windows and Doors

Glass and Screening replaced in any Make Door or Window

All Aluminum Extruded Combination

DOORS COMPLETE \$39.95

INCLUDING HARDWARE AND SUB-FRAME

SPRING ENCLOSURE THAT PORCH NOW!

SCREENS • 1" or 7" Jalousies

• Aluminum Combination or Awning Windows

SPECIAL LOW PRICE ON COMBINATION UNITS

FOR ALUMINUM HORIZONTAL SLIDING WINDOWS

### AWNINGS

ALL STYLES

FOR WINDOWS AND PATIOS

GET TWO ESTIMATES . . .

BE SURE ONE IS OURS

36 Months to Pay

No Down Payment

LI 2-7257

Eves. and Sundays LI 6-8411

Free Home Demonstrations

LI 2-7668

LI 3-1213

### Corbin Window Co.

2531 JOHN R. MADISON HEIGHTS

Between 10 and 10½ Mile Roads

conditions of summer heat, drought, cold, or both.

10. Windbreak and screen plants. 11. Plants for southern gardens. Consult with your nurseryman for plants to suit your particular purposes. Some flowering plants, like the rose, will grow almost anywhere. There are many other plants available from the pyracantha and the hollies of the moderate climates to the philadelphus and apricot of northern areas.

There are literally hundreds of species of shrubs and trees for practically every screening purpose.



We carry the complete line of Jacobsen Power Mowers

### POOLE HARDWARE

MIRACLE MILE

FE 8-9618 Parking for 5,000 cars

Open 9 a.m. - 9 p.m.

### Modernization Service



- ADDITIONS
- ATTIC ROOMS
- RECREATION ROOMS
- ALTERATIONS
- ENCLOSURES
- PORCHES
- KITCHEN CABINETS

F. H. A. Terms. Free Estimates.

MY PAST CUSTOMERS ARE MY REFERENCES. GIVE ME A CALL AND I WILL GIVE YOU A REFERENCE.

H. G. Christian

CALL MU 9-0413

103 Chapin Birmingham

Lawrence E. Smith  
Landscape Design and Construction  
135 N. Woodward  
in the Wilson Building  
Phone MI 4-3036

SWIMMING POOLS  
OPENED  
STEELCRETE  
GR. 4-3601

PCWEI LAWN MOWERS  
Arrow Saw & Tree Supply Co.  
3017 Greenfield at 13 Mile  
Midwest 8 2660

### JUST ARRIVED—FRESHLY DUG

## EVERGREENS \$2.95

1000 TO CHOOSE FROM

None Higher In This Group

SPREAD UP TO 24"—HEIGHT UP TO 4'



### ASHFORDI JUNIPERS

Columnar Upright

4' - 5' \$4.95

### ROSE BUSHES

Hybrid Tea's, Floribundas, Climbers

From \$1.50 up

### RHODODENDRONS

From \$1.95

### ORNAMENTAL SHADE TREES

RED FLOWERING PEACH \$1.29

4 Ft. Tall

PURPLE LEAF PLUM \$1.95

4'-5' Tall

MAGNOLIA \$4.95

Beautifully Branched

FREE LANDSCAPE PLAN  
BRING A SKETCH OR  
PHOTO OF YOUR HOME

### GRASS SEED

PURE MERION BLUE \$1.39 Lb.

KY. 31 FESCUE 5 Lb. \$1.99

THRIFTY GREEN MIXTURE 5 Lb. \$2.79

SPRAY YOUR ROSES NOW

WITH ORTHO ROSE DUST

Large Plastic Squeeze Can

ONLY \$1.49

OPEN EVERY DAY 8 A.M. to 9 P.M.

## BERKLEY NURSERY SALES

2626 COOLIDGE (at 11 1/2 Mile)

BERKLEY, MICH.

LI 6-4200 LI 8-5333

17807 W. 7 MILE

DETROIT, MICH.

KE 7-2223

Here's Our **SPRING SPECIAL** of

# CARLOAD Buys

SAVE! SAVE! SAVE! SAVE! SAVE!

## 20 Gallon GARBAGE CANS

PASSES ALL CITY CODES

\$2.98 Value

88

LIMIT 2

None Sold to Dealers

Garbage Can Rack

1.49

Reg. 2.99

OPEN SUN. 10 TO 4

SOUTHFIELD

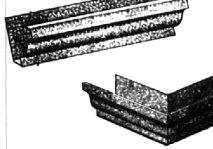
at 12 MILE RD.

Open Thurs., Fri. & Sat. Evenings

EL 6-7300

## GALVANIZED GUTTER 68¢

per length



Complete line of Do-It Yourself, easy to install solderless fittings



WEST SIDE STORE

1535 HAYES, corner HOUSTON - WHITTIER

Open Thurs., Fri. & Sat. Till 9 p.m.

FREE PARKING