

BIRMINGHAM CAMERA SHOP
168 So. Woodward
Phone MidWest 4-0510
If You Don't Know Camera—
—Know Your Dealer
1978 YEAR
SERVING BIRMINGHAM

RADIO TELEVISION
HI FIDELITY
Sales & Service
Birmingham Electronics
Du Mont
Sylvania — Telefunken
217 W. Maple MI 6-8440

BUSINESS BRIEFS

Manager Named For Steel Door Corp. in B'ham

September 5, 1957 THE BIRMINGHAM ECCENTRIC 5-D

News copy submitted early is necessarily given preference, so the "early bird" usually gets the space.

BIRMINGHAM BLUE PRINT AND SUPPLY COMPANY
W. S. McALPINE, PROP.
• Blue Prints • White Prints
• Photostats • Transparencies
QUICK SERVICE
While You Wait
Ph. MI 4-3738
WE AIM TO PLEASE
626 S. Woodward
Open Weekdays & Saturday A.M.



GEORGE M. DEVERE

George M. DeVere, 1977 Villa, Birmingham, formerly sales representative and assistant sales manager, has been appointed manager of the wholesale division of Steel Door corporation for the company's plants in Birmingham, Mich.; Atlanta, Ga., and Wingham, Ontario, Canada, according to Glenn Berry, president.

IN HIS NEW CAPACITY, DeVere will work closely with wholesale customers, promote and supervise sales of the company's products through retail lumber and building supply outlets.

DeVere, a 1950 graduate of Georgia Tech, has been with Steel Door corporation for the past five years. He formerly worked for the Crawford Door company.



HERMAN FRIEDMAN

Friedman Now General Ops. Wrigley Mgr.

The appointment of Herman Friedman, 19040 Warwick, Birmingham, as general operations manager of the Wrigley division of ACF-Wrigley Stores Inc. was announced today by Samuel Frankel, vice-president of ACF-Wrigley and general manager of the Wrigley division.

Reporting directly to general manager Samuel Frankel, Friedman will be in complete charge of all phases of the operation of Wrigley stores except sales and finance.

FRIEDMAN JOINED Wrigley in 1942 as most buyer. He rose to his present position during the period when the company was growing from seven stores, doing an annual business of seven million dollars, to 99 stores, grossing over one hundred seventy-five millions annually.

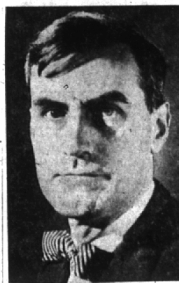
Before this promotion, Friedman was meat department director of the Wrigley stores. He has been active in every department of the meat business from processing and manufacturing to selling.

ACCORDING TO Frankel, Friedman was picked to be general operations manager because "he has demonstrated his ability to administer the most complex department in the company, a department which required constant quality control at every hour of the day."

Department heads of warehousing, personnel, planning, research, store construction, engineering and maintenance, will report to Friedman.

Resigns Merchants Committee Post

Foster Tothacker has resigned as chairman of the Retail Merchants committee after more than two years in this position during which period this committee was more active than at any other time in its history. The Chamber of Commerce Board of Directors thanked Foster for a job well done and selected Robert Faulkner, manager of Grinnell's as the new committee chairman.



PETER KYROPOULOS

CIT Prof Named Technical Styling Executive at GM

Appointment of Dr. Peter Kyropoulos, 1044 Stratford lane, Bloomfield Hills, nationally known technical expert from California Institute of Technology, as executive in charge of technical development of General Motors styling was announced today by Harley J. Earl, GM vice president in charge of styling.

Earl said Dr. Kyropoulos, who has already arrived to assume his new duties, will supervise technical aspects of advance planning at GM styling and will also do liaison work for styling with colleges and professional groups.

DR. KYROPOULOS, who is 43, has been an associate professor of mechanical engineering at California Institute of Technology since 1941. He received both his master's and doctor's degrees there.

He has worked summers since 1953 as a consultant for the General Motors research staff and was active in the development of both Firebird I and Firebird II, GM's gas turbine cars. He conducted the aerodynamics testing of Firebird I in the Guggenheim Wind Tunnel at California Institute of Technology.



Gilbert K. Hause

Hause Named Transmission Head at GM

Charles A. Chayne, 5130 Clarendon Crest, Bloomfield township, vice president in charge of General Motors engineering staff, recently announced the appointment of Gilbert K. Hause, 5010 Franklin, Bloomfield township, as engineer in charge of the engineering staff-transmission development group.

Hause succeeds Oliver K. Kelley, who becomes chief engineer of Buick Motor Division after serving 17 years as head of the transmission group.

HAUSE, WHO WAS executive assistant engineer to Kelley, began his General Motors engineering career in 1924 with Delco Products Division.

After various engineering design assignments with Delco Products and the former DeLo Brake Division, he was transferred to General Motors engineering staff power development group in 1940.

A YEAR LATER he was assigned to transmission development group. In 1947 he was promoted to assistant engineer in charge and in 1955 he was named executive assistant engineer in charge of the group.

PECK'S
Cleaning and Pressing
Cash and Carry
Plain Dresses—Suits—\$170 Topcoats
108 So. Woodward Ave.
for delivery service...
PHONE MI 4-7724

ALPINE BOWLERS
We have a complete stock of Marlboro shirts in stock (8 colors)
Shoes — Balls — Bags
Everything to make your bowling season a big success
1693 S. WOODWARD
Shop North of 14 Mile Road MI 6-7474

SPECIALIZING WITH QUALITY MEAT
Complete **FOOD SERVICE**
Baskets all shapes and sizes
OLSEN'S MARKET
AMPLE PARKING
WE DELIVER
MI 4-1916
West Brown at Chester
Birmingham

THE WORK IS IN GOOD HANDS IN A MODERN All-Gas Home!

GAS
THE MODERN FUEL FOR AUTOMATIC COOKING CLOTHES-DRYING REFRIGERATION WATER-HEATING AIR-CONDITIONING AND INCINERATION

When you entrust your household chores to Gas, they are in good hands. Gas, the silent, dependable wonder fuel, cools as well as heats. It's a great work and time-saver, too, because it's fast. It will give hours of carefree leisure. In an All-Gas home the work is done quietly, efficiently and economically.

ONLY GAS DOES SO MUCH, SO WELL, YET COSTS SO LITTLE

CONSUMERS POWER COMPANY

Subersnap PRINTS
Take Films to Camera Counters Serviced by HITE PHOTO, INC.

Kay's baum
Authentic Crew Neck 10.98
Blends of imported Peruvian Alpaca and Scotch wool. Spectator box fit... action shoulder... hand-looped neck. Imported Swiss colorings: charcoal grey, medium grey, heather beige, charcoal brown, char. coal green, Nordic red, heather, maroon, heather blue, yellow, white. Small, medium, large.
Mail and Phone, Jordan 6-8777

BEAUTIFUL FORMICA DINETTES
AVAILABLE IN BLACK WROUGHT IRON AND CHROME
MADE TO ORDER
ANY Shape Style \$59.95 and up
Lifetime Guarantee On All Chrome
26 Styles — 26 Colors — All Stores

Beautiful FORMICA BUFFETS Made To Order
METALMASTERS MFG. CO.
4600 N. WOODWARD, Near 14-Mile Road Liberty 9-3011

YOUNG'S... brings in a great catch of Lebow Suits for fall

It's the neatness and superior tailoring of Lebow suits that make them ever popular. This Fall, we've brought in many new versions in fabrics of really superior character. New deeper colors to choose... and the Natural Look cut to put forward your best appearance. Come see them!

Lebow HUNTER Model \$95

Young's of Birmingham
203 Pierce Street