

**Girl Scouts  
Number 3,000  
In B'ham Area**

Southern Oakland Girl Scouts, a Torch Drive youth-training service, today reported 236 members in Bloomfield township, 56 in West Bloomfield township, 440 in Bloomfield Hills city, and 2,102 in Birmingham last year.

As scouts, they belong to a team of girls and women in 36 counties of the world who offer reassurance to worried parents.

Girl Scouting exists here and in other communities because many parents are concerned about what their children do after school hours. So women volunteers, many of them mothers, serve as troop leaders. Men give a few hours to committee meetings or act as consultants.

**IN SCOUTING, GIRLS** from seven to 17 are learning in their free time to take care of a home, to be healthy, to get along with people, to be good sports, and most important, to be good citizens.

Lumped together, Girl Scout activities add up to character building through fun and adventure.

Because of the enjoyment it brings to so many youngsters, and the favorable results in terms of better citizenship, the Girl Scouts of metropolitan Detroit, the Southern Oakland Girl Scouts and Girl Scout units in several outlying communities, are aided financially by the Torch Drive.

**THESE GIRL SCOUT** organizations are among 195 health and community services for whose 1958 budgets the ninth annual torch drive, Oct. 15 through Nov. 7, will be raising funds. Many Girl Scouts, in turn, help each year to make the torch drive a success by packaging campaign material at United Foundation headquarters.

By so doing, they help not only their own organizations, but many others as well, including such widely-known groups as the American Red Cross, the American Cancer Society, and the Michigan Heart Association.

**APTITUDE TESTS**  
enable you to learn the kind of work in which you can best succeed or the studies best for you. For men, women, boys, and girls.

Vocational Counseling Institute  
Daniel L. Beck, Director  
958 Macgregor Bldg., Tower  
Woodward near Warren  
12 Years Serving Detroit



MRS. FRANK H. TAYLOR III

**Bermuda Honeymoon  
For Newlywed Taylors**

Frank Harold Taylor III claimed Sara Joan Arnold as his bride in a 4 o'clock ceremony Saturday in Christ Church Cranbrook. The Rev. William C. Norvell officiated.

Sara is the daughter of Mrs. John R. Earle of Westchester way, Birmingham, and the late Mr. Earle. Frank's parents are the F. Harold Taylors of Pickford, Mich.

**GIVEN** in marriage by her grandfather, Charles E. Wetherald of Grand Blanc, the bride wore a gown of white French pique designed with a bateau neckline and small cap sleeves. The bell-shaped skirt fell from the fitted bodice into a full-length chapel train. Back of the skirt was designed with soft pleats to accent fullness.

Sara completed her ensemble with an open-crowned close fitting cap made of the matching pique which held her three-tiered illusion veil. She carried a spray of gardenias and ivy.

**JUDITH EARLE** was her sister's maid of honor. Bridesmaids were Christine Andress of Glenary circle, Susan Bergdahl of Fairfax road, Jane Taylor, sister of the groom, and Mrs. Robert Henderson of Ann Arbor.

Attendants were gowned identically in dresses of pale yellow pique designed along the same lines as the bridal gown. Skirts fell to a ballerina length and they wore open-crowned matching pique caps, accented with veils of maline.

**DAVID TAYLOR** was his brother's best man. Seating the guests were Robert Shultz, Robert Gilow, Thomas Zilly, Donald Byron and Robert L. Earle.

Mrs. Arnold wore a sheath of turquoise blue chiffon over silk with back panels of the chiffon. She had a yellow orchid pinned to her purse. Mrs. Taylor chose a lace sheath with a chiffon cummerbund and bronze orchids.

After a reception at Orchard Lake country club the couple left for a one-week honeymoon in Bermuda. They plan to make their home in Ann Arbor.

**Southfield PTA  
Sets Annual Meet  
For September 10**

**SOUTHFIELD** — Area council PTA will present its annual school of instruction at the Southfield high school, Lahser at Ten Mile road, Sept. 10. Registration will be at 7:15 at the north entrance.

Glenn Schoenbals, superintendent of Southfield public schools, will welcome the members of the area council, officers and committee chairmen of the Southfield schools PTA units.

Nelson Olmsted, assistant superintendent of Southfield schools, in charge of elementary education, will close the program with a "report on the school agenda for the coming school year."

Birthdays, anniversaries, guests, births, parties are all news—call the society editor about them.

**Elected Treasurer Of CPA Society**

Miss Gertrude Hindelang of Birmingham has been elected treasurer of the American Women's Society of Certified Public Accountants. She will be installed in office,

along with the other officers and directors, at the annual meeting of the society to be at the Edgewater Golf hotel in Edgewater Park, Miss., from Oct. 24 to 27.

**Like to stretch out?**



Enjoy the luxurious, toe-wiggling freedom of an extra-long or king size mattress! Now you can sleep in cozy comfort on the finest by Stearns & Foster—created in extra-large sizes for larger-than-average people and average-size people who enjoy truly magnificent sleeping accommodations.

60" x 80" \$79<sup>95</sup>  
matching box spring \$79.95

**R.C. CARPENTER  
Slumber Shop**

OPEN THURS. & FRI. TILL 9 P.M.  
28879 Greenfield (South of 12 Mile)

LI 4-9133

**REWEAVING**

All Methods — Clothing & Sweaters  
We do our own work, (Precision Weavers)  
ALL WORK GUARANTEED

LI 1-8580

**F.A. Smith**

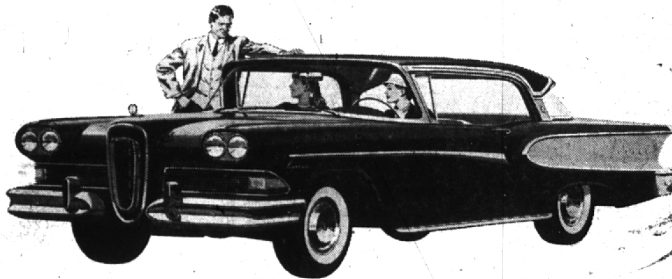
Open Fri. until 9 P.M.  
Other days until 8  
Closed Weds.—July & August

CUSTOM TAILORS

104 W. 4th St., Main Professional Bldg., Suite 204  
Royal Oak

This is the **EDSEL**

"A remarkable new automobile  
joins the Ford family of fine cars"



**T**here has never been a car like the Edsel. It is a magnificent automobile. Behind it lie all the resources of Ford Motor Company, all of the experience and engineering skill. The results: The Edsel is powered by the newest V-8 engines in the industry—the Edsel 400 and the Edsel 475. Specifications: 400 and 475 foot-pounds of torque; 303 and 345 horsepower; 10.5 to 1 compression ratio.

The Edsel's big, safer brakes do not need periodic tightening.

They adjust themselves automatically in the course of your day-to-day driving.

The Edsel shifts itself. With Teletouch Drive, you just touch a button on the steering wheel hub. Teletouch Drive does the rest—smoothly, surely, electrically.

The Edsel's list of available new features includes contour seats; a warning light that flashes when you exceed your pre-set speed limit; another that flashes when oil is one quart low; a release that lets you open the luggage compartment from the driver's seat.

There are many things that make the Edsel different from any other car you have driven. More exciting, more sure, more safe.

What does an Edsel cost? Prices range from just above the lowest to just below the highest. You can afford an Edsel. And you can choose from four series, 18 models.

Stop in soon at your Edsel Dealer to see and drive the newest car in the world: the Edsel.

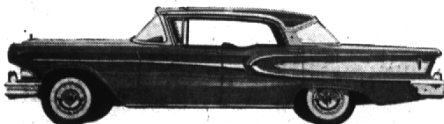
Now you can see  
and drive the

**EDSEL**

EDSEL DIVISION - FORD MOTOR COMPANY

The Edsel's distinction is easily seen in the classic vertical grille, the low, wide flight deck, the elegant lines of the cars shown here.

Above: Edsel Corsair 2-door Hardtop.  
Below: (left) Edsel Citation 4-door Hardtop; (right) Edsel Pacer Convertible.



SEE YOUR EDSEL DEALER

**JERRY ROBINSON EDSEL SALES, Inc.**

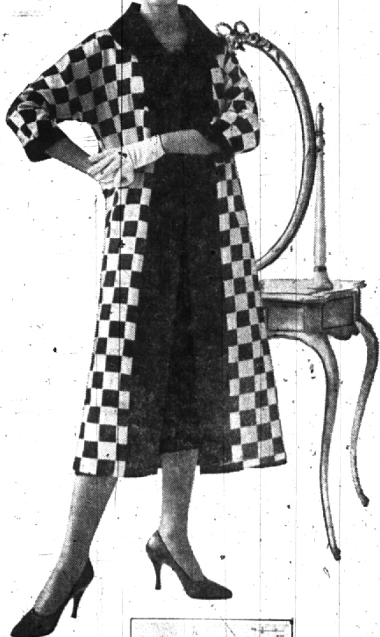
408 S. WOODWARD

BIRMINGHAM

MI 6-8700

IN OTHER AREAS SEE YOUR LOCAL EDSEL DEALER

ready-made checks tailored to you...



**ECON-O-CHECKS**

They're ready-made for you if you write only a few checks each month, or keep a moderate balance in a checking account. And tailored to you, with your name printed on every check at no additional cost. You pay only one charge for ECON-O-CHECKS, and you get a convenient check record and handsome carrying case. There's no minimum balance, no monthly service charge, no charge for deposits or statements. Ask about ECON-O-CHECKS at any of NBD's 60 offices in Detroit and suburban areas which offer you every banking and trust service. Remember, National Bank of Detroit offers regular checking accounts, too.



More friends because we help more people

**NATIONAL BANK  
OF DETROIT**

Member Federal Deposit Insurance Corporation