



Funeral Today for B'ham's 1st Mayor
Long Public Career Is Ended for Harry Allen, 75

By GEORGE WM. AVERILL

Three-quarters of a century of intense devotion to Birmingham, both as a village and a city came to an end Monday night with the death of Harry Allen.

He will be buried this afternoon in the same Greenwood cemetery plot where two other pioneer Birmingham families are at rest. They are Freeman and Mary Jane Richardson and Warren D. and Nellie Clizbe, the grandparents and parents respectively, of Mrs. Harry Allen, who survives her husband.

Services will begin at 2 p. m. at Baldwin funeral home, Oakland at Ferolite streets, Birmingham. Officiating will be the Rev. W. Glen Harris of Birmingham's First Presbyterian church, where Mr. Allen was a member.

MR. ALLEN died Monday night at the age of 75 at the Bloomfield hospital following a long illness. He was born in Birmingham February 19, 1882, was graduated from local schools, obtained a law degree, was Birmingham's village attorney, local school superintendent, then the city's first mayor.

These included the construction of the old interurban line and car barns which used to be at Harrison and Woodward. Harry Allen used to help his father on these jobs in the village.

HE WAS a scholarly individual all his life. He was a regular user of the village's first public library. He was graduated from Old Hill high school in 1901, then went to the University of Michigan and obtained a law degree in 1909.

He joined the law firm of Race, Maas & Selander. His first participation in municipal government came in 1914 when he became Birmingham's village attorney. He had just married Marion Clizbe, whose father, Warren D., was superintendent of Birmingham schools from 1880-82. Then Clizbe became a state insurance agent with offices in Detroit.

IN 1930, he was elected village president. He served until 1933 when he ran for the new city commission and was named Birmingham's first mayor by his fellow commissioners.

He occupied the mayor's chair until he left the commission in 1936. For the first few years of their marriage, the Allens lived in Highland Park. Upon the death of Mrs. Allen's parents, originally she moved into the Clizbe home at 556 W. Maple. The house, which occupied the same site, originally was Birmingham's first school house.

MR. CLIZBE had it remodelled into more adequate living quarters. Mr. Allen also considered further remodeling, but one wall gave way in the process. So a new house was built in the middle 20's, into which went the building materials of the old school.

It contains 16 rooms, and for years was one of the town's show places. Harry Allen won his law reputation as a trial lawyer. But in the early 20's, he went into the practice of corporation and tax law. It was only in January of this year that he officially retired from his firm.

FOLLOWING HIS retirement from city government in 1936, Mr. Allen was paid considerable tribute by residents, former village presidents and city officials. They lauded his outstanding service for the municipality which he served so long and so willingly.

His public service did not end here, however. He was elected to the public library board in 1944, served on it until he retired in June of this year.

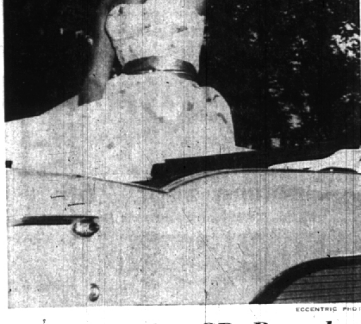
Mr. Allen was a member of the Detroit, Michigan and American bar associations, the Detroit club, Thomas M. Cooley club of Detroit, and Pine Lake country club. He also was director of several companies, including the Goebel Brewing Co.

He was a member of the Detroit, Michigan and American bar associations, the Detroit club, Thomas M. Cooley club of Detroit, and Pine Lake country club. He also was director of several companies, including the Goebel Brewing Co.

He was a member of the Detroit, Michigan and American bar associations, the Detroit club, Thomas M. Cooley club of Detroit, and Pine Lake country club. He also was director of several companies, including the Goebel Brewing Co.

HARRY ALLEN

lived by a son, James C. who also served as Birmingham's mayor in 1966; six grandchildren; a niece, Mabel A. Penrod of Lansdowne, Pa., and a brother, Stuart M. of Birmingham.



Leading the CD Parade

Queen Jan Le Messurier, to whom anyone would be civil, waves from a convertible as she will be doing tonight when she reigns as Birmingham's Civil Defense queen. Jan will ride near the head of the parade featuring military, civic, state and volunteer units which would be utilized in an emergency. A senior at Birmingham high school, 17-year-old Jan lives at 750 Kensington, Birmingham.

Crowds to View Nike From Bleacher Seats

With the public becoming more and more missile conscious, a 36-foot trailer driving in tonight's Civil Defense parade, will probably attract the undivided attention of Birmingham parade goers.

The trailer will carry a Nike missile, which will be on display at Baldwin school for one hour before and after tonight's 7:30 parade. Birmingham Junior Chamber of Commerce President Richard Ernst said the parade would be larger and more complete than last year's successful march to make the public civil defense conscious.

PORTABLE BLEACHERS with a capacity for seating 500 people will be set up along Woodward near Maple avenue. The line of March will head east on Merrill from Chester, then south on Wood to Brown, east on Brown to Woodward, north on Woodward to Maple, turning west on Maple to Chester.

This and That

George R. Averill

Men who head large enterprises, whether they be in private business or in government, must depend very on the honesty and competence of aides. If the head man does not have such good aides, he may be given glacial data on a subject, too little or too much of all about it. Result: the head man makes wrong decisions. We think of the case of President Ike's mistakes come about because of the wrong type of aides. Especially do we think of his chief aide, Sherman Adams, makes plenty of blunders. We believe that Adams, a former Governor of New Hampshire, realizes Ike's weaknesses, both personal and executive, and assumes too much autocratic authority. He is the "Harry Hopkins" of Ike's administration. Between Adams' bureaucratic arrogance, and Ike's ineptness, the Republican Party is going... going... going... and already too far gone down the political slides.

Table with 2 columns: Category and Page Number. Includes sections like Amusements, Books and Reviews, Business Briefs, Church, Correspondents, Bloomfield Village, Graefield Derby, North Adams, All Other Areas, Down to Earth, Editorials, Nature Now, Obituaries, Parties Original, Round the Towns, School Sports, Theaters, Women's News Section, Want Ads.

Dr. Harris Observes Archaeological Work

By JULIE CANTLER

Goliath didn't have a chance. That guided missile with which David delivered his knock-out punch was about as subtle as the Nike. Rev. Dr. W. Glen Harris can describe it for you. In fact, he was in Birmingham last night to observe the work of the city's first zoning ordinance early in 1937.

DR. HARRIS, a distinguished biblical scholar and minister of Birmingham's First Presbyterian church, accepted an invitation to go along as an observer with the expedition to the Pittsburgh Xenia seminary in Pennsylvania. His personal friend of Dr. Harris. Digging such as this expedition, often uncover the walls of the Holy Land, where he was part of an archaeological expedition.

Mrs. Parry Named to School Bd.

A mother of four children in Birmingham public schools was named Tuesday night to a Birmingham board of education vacancy. She is Mrs. Donald Parry, 836 Molegan, Birmingham. Her appointment was confirmed at Tuesday night's regular school board meeting.

Mrs. Roosevelt To Be First Speaker On Sold-Out Town Hall 57-58 Series

Mrs. Eleanor Roosevelt, returning via jet plane from Russia, will open Birmingham Town Hall for '57-58 on October 3-4, speaking on "The Role of the United States in the United Nations". She will be addressing a full house at the Birmingham theater.

Applications are filed in the exact order received," said Mrs. Charles F. Kase, secretary in charge of Town Hall office, "and our audiences will remember that Birmingham's opening series of lectures at the concluding lecture of last year's series. That has always been the procedure and will be so again this year."

Traffic Problems Delay Agenda Of B'ham Board

Traffic problems in the Midvale school area delayed start of the regular agenda of the Birmingham board of education more than a hour Tuesday night as more than a dozen mothers from the school area were escorted to safety by a police officer.

The group was referred to the Bloomfield township board of education. The school board has no jurisdiction nor funds to provide crossing guards. In an official action, the board approved a resolution to contribute funds to the township board for the improvement of Derby road from Adams road to the Grand Frank road bridge. The funds were requested by the city of Troy.

Bloomfield Woman Loses Purse With \$23,000

A Bloomfield township woman Tuesday was out about \$23,000 because of a short memory. Mrs. Monya Brigant, 30, of 4050 Fairlane, laid a handbag down somewhere in Northland shopping center. When she looked for the purse it was gone. The purse contained \$21,000 in government bonds—all of the thousand dollar denomination—as well as an increase of \$1,000,000 of the Torch Drive goal for the Detroit area.

Strictly Fresh

Our secretary's hairdo is a work of art. The fellow who runs the beauty shop around the corner. The height of fashion is whatever the headline of the moment happens to be.

Why is it that a horrendous mistake is made by you is just one of those things when the boss proposes it? All makes of inner spring mattresses created. TRES COMPANY, Dual "O" and ask for address 6218.

Teen-Age Court To Try Juvenile Traffic Cases

With the unanimous approval of Birmingham city officials and the cooperation of county judges, a teen-age traffic court will hand down decrees in cases of traffic violations involving 14 to 16-year-olds.

UE Goal Here Is \$226,761

Residents of the Birmingham-Bloomfield-Franklin region will be asked to contribute \$226,761 toward Metropolitan Detroit's 1957 United Foundation goal of \$1,650,000. The drive will be held Oct. 15 through Nov. 7. The area's quota was announced Friday night by W. T. LaRue, general campaign chairman, at an advisory committee meeting at MacManus John & Adams in Blooming Hills.

INSIDE THE ECCENTRIC

Amusements 6-A
Hits of Birmingham 6-A
Books and Reviews 3-D
Business Briefs 2-D
Church 6-C
Correspondents 6-C
Bloomfield Village 6-C
Graefield Derby 6-C
North Adams 5-C
All Other Areas Section E
Down to Earth 2-D
Editorials 8-D
Nature Now 4-A
Obituaries 8-D
Parties Original 1-C
Round the Towns 3-E
School Sports 6-B
Theaters 6-E
Women's News Section B, A
Want Ads 6, 7, 8-A