

Openers

(Continued from Page 6-E)
Eligibility rules will keep Eberline out of the Birmingham opener. Lee McBride and Tom Waylett, both juniors—are promising new men being fitted for Cranbrook guard berths.
Troy's coach, Joe Bechard, has several outstanding new line prospects. They include Bill McAninch, Chuck Beach, Art LaVoie and Gary Schultz, the latter a 200-pound sophomore.

Kearns Heads Sports Editors

Bruno L. Kearns, sports editor of the Pontiac Press and former Eccentric sports editor, has been named chairman of the Associated Press Sports Editors' association.
AMONG THE outstanding new Colt backfield prospects are Gary Littleton, a fine punter and passer, Rick McKinnon, sophomore quarterback candidate, and Jerry Cochran, a transfer from Rossville.

Briefs from the Golfing Scene

Suburb Women's Group Ends Play

The Women's Suburban Golf association has finished its first season. A closing luncheon and the awarding of trophies and prizes took place last week at Glen Oaks country club.
Early the same day, in the final match to determine the WSGA champion, Mrs. Helen McKerrrell of Franklin Knolls defeated Mrs. Marg Garstepy of Redford township, 2 and 1.
Following the luncheon, Mrs. Florence Greenleaf of Franklin presented to President Jean Ford of Farmington an all-leather golf bag in appreciation of her hard work in establishing the league.

MRS. BERN ELLIS of Birmingham, as chairman of the awards committee, presented trophies to Mrs. McKerrrell, Mrs. Garstepy, Dorothy Proctor, Dr. Jerman, Dorothy Abbott, Jean Ford, Florence Green-

Match Tournament Ends '57 Season For Newcomers

The Birmingham Newcomers golf league is ending the season with a handicap match play tournament at Glen Oaks country club.
In flight A—Mrs. Madeline Hope defeated Mrs. Glenn Daniels.
In flight B—Mrs. Dottie Beck defeated Mrs. Gladys Bird.
In flight C—Mrs. Jane Davis defeated Mrs. Elva Turk.
In flight D—Mrs. Winnie Yoder played Mrs. Wilma Brenton Wednesday.

THE GOLF BANQUET will be held Oct. 16 and the championship trophies will be awarded at that time.

leaf, June Wolff, Grace Sanders, Mary Whiston and Kay Houston. Mrs. McKerrrell received a silver tray as league champion, and Mrs. Garstepy, a silver vegetable dish as runner-up.

Sports Car A Line

(Continued from Page 6-E)

In 1913 the firm failed, going bankrupt. The surviving company was Maxwell Motor Co. which later merged with Chalmers which in turn joined Walter Chrysler to form Chrysler Motor Co. in 1924.
When the United States Motors Co. failed, it had 28 different types of engines on the market. Don attributes its failure to this lack of standardization.

THE STODDARD-DAYTON being rebuilt by Don is one of the rarer and much-sought models in the field of vintage auto collecting.

It's one of the very first American sports cars to be built and had a four-cylinder, 50 horse-power engine. The car was capable of an 85 mph top speed with a cruising speed of 50 mph.
The very large engine featured overhead valves and hemispherical combustion chambers, a "tree" feature introduced around 1952-53 by Chrysler. It had been used in aircraft engines and in foreign cars before then but Chrysler was the first to incorporate the feature into American passenger cars for more than 40 years.

What's on Don's plans?
A debut of his car at an Ohio show in June, the start of restoration of his 1908 Stoddard-Dayton and . . . the enlargement of his garage.

AND DON ADDS that it's only coincidental that the Walnut Lake area roads are as bumpy and in general as bad shape as the ones 40 some-odd years ago.
But it makes a darn good proving ground for a 47-year-old car.

(Continued from Page 6-E)

a month or two—there are none to be found in the country.
Living expenses are beyond imagination. A room may cost \$60 a day. One meal—and not anything special—could set you back \$15.

It's no place for the sportsman to plan to spend a two-week vacation.
The Venezuelan government picked up all expenses for the Field and Stream trip, otherwise Bass said he wouldn't have considered going—the cost is that great.

WHY?
It's because Venezuela doesn't need the tourist dollar. A country that makes \$2 million daily on oil alone—not counting mineral riches—doesn't need other income.

But Venezuela is a proud country. It's proud of its fishing and hunting potential, its fabulous hotels.
That's why George Bass is there now.

Venezuela wants to go on exhibit—to show itself off before the sporting world.
It knows improvements must be made. A lengthy report sent by Bass after his first trip has been followed, as to recommendations, to some extent. More changes are forthcoming.

Bass will undoubtedly make more recommendations when he returns in a few days.

SOMEDAY . . . someday, Venezuela will be as close to the United States sportsman as Canada, Alaska and Mexico are today.
That someday may be soon.
But until then, Venezuela remains a fabulous sport frontier, an untapped bonanza for sportsmen.

JUST RIGHT FOR WHAT YOU HAVE IN MIND

Whatever your forward looking plans may call for—large home, small home, retail business or manufacture—you are sure to find the site among our many listings of vacant property. Here are a few for your consideration.

On a winding drive in exclusive Chelmsleigh
A choice wooded hillside site
Perfectly suited to a bi-level home
Plenty of room—full 1 1/2 acres
Just see it • You'll want it for sure.

Just across the road from St. Hugo Church and school
A beautiful homesite in a choice section of Bloomfield Hills.
2 1/2 acres of rolling terrain—shade trees
We would like to show you.

A large wooded home site in Trowbridge Farms
Almost 5 acres of rolling land
Large hardwood trees and a young orchard
You will never match it
And easy terms

In ultra select company
A splendid homesite you'll never duplicate
It's big—full 225 ft. frontage
In Lakewood Heights—Bloomfield Hills
A select location for that new home
And it's a Bargain.

Some Builder's Opportunity
Ten acres in a residential community
Flowing stream for added charm
Corner Middlebelt and 13 Mile Road
Ideal for subdividing
Call us for more information.

Six level acre zoned light industrial
Includes a large nearly new
9 room house suitable for office use
Located just north of Maple
Near Crooks Rd.
An exceptional price—and terms.

WALSH JAMES & WASEY CO.

Realtors Since 1918
431 S. Woodward Ave. Midwest 4-6500
Birmingham Detroit phone JO 4-6033

Franklin Village



Charm - Personality - Comfort

3 Bedrooms, 3 Baths, 17 x 24 Living Room, Family Room, Two Fireplaces, 3 Acres, One-Half Acre Fish Pond, 20 x 20 Tool House, Fruit Trees, Berry Bushes, Horses permitted.

PAUL F. SCHOEFFEL

Franklin Village

MAyfair 6-2528

BLOOMFIELD VILLAGE

Beautiful Brick & Stone Ranch

3650 Tuckahoe Rd. Nestled in trees on a large lot. Bargain priced for this exclusive neighborhood. Has 3 twin-size bedrooms plus den convertible to 4th; 2 1/2 Baths. Large living room with fireplace and spacious, separated dining all overlooking lovely screened terrace. Large, fully-cupboarded kitchen with dishwasher, disposal and picture-window breakfast area. Full basement; stairway to attic storage. 2-car attached garage.

Shown by appointment only.

VERY ENTICING—AT ONLY \$38,500

H. L. MARTIN, Realtor
KEnwood 3-7916 Eves. call FEderal 8-8403

CHARMING COLONIAL!



This is a delightful home on a most pleasant street in a very convenient location.

Living room with paneled fireplace wall.
Dining room: Kitchen with breakfast space, paneled dado and wallpaper.
3 nice-sized bedrooms; 1 1/2 baths.
Screened Porch; full basement tiled.
Fenced yard; Aluminum storms & screens; Dishmaster; Watersoftener; Incinerator; Carpeting and Drapes.

Neat as a pin, you can move right in and, further, this home is offered at a price lower than any comparable home in the area. Call us for an appointment.

WOULD YOU RATHER BUILD?

We have available some very fine building sites, in prime locations—for example:

5 1/2 acres, City of Bloomfield Hills—\$27,500.

METAMORA

.80 acres of rolling wooded land near the Hunt Club. Land Contract terms. \$28,000.

.60 acres near Hunt Club—available in parcels of 20, 40 or 60 acres, at \$7,000, \$13,000 or \$18,000.

DO YOU WANT COMMERCIAL OR INVESTMENT PROPERTY?

We have a Colonial residence in a rapidly expanding business zone, easy to convert, close-in, for sale or rent. Ideal for small business. \$225. month.

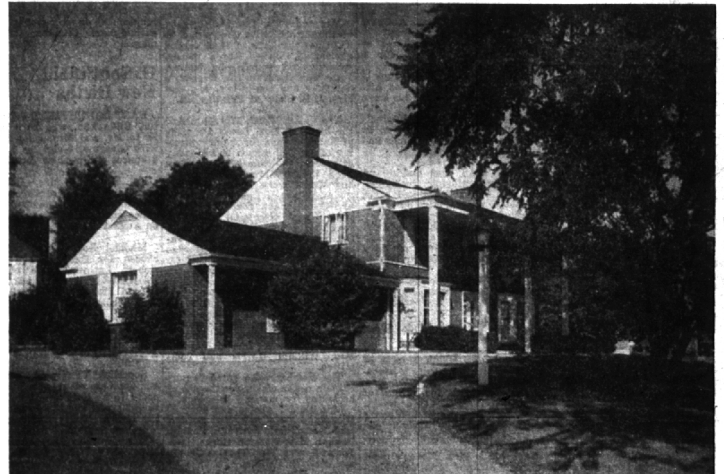
We have numerous commercial properties, both close-in and acreage further out, with tremendous possibilities, for any type of business or industry.

Call our Commercial Department and discuss your problems. We can find the right site for you.

SNYDER KINNEY & BENNETT

INC. MI 4-7000
239 S. Woodward Realtors

HIGH ON A SLOPE IN BLOOMFIELD VILLAGE



OWNER TRANSFERRED, MOVED TO CALIFORNIA

CUSTOM BUILT BY LETHEMON

Capturing the air and grace of Colonial living, this home is second to none in finish and appointments.

The majestic entrance hallway, resplendent with a light marble floor, presents the curving white wrought iron banister leading to the four bedrooms, containing huge closets.

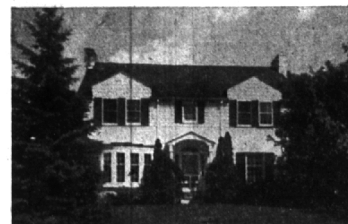
Carpeting throughout is a special loom wool; and the home is air conditioned.

Three baths, plus a built-in utility powder room.

The bar sink is built into a kitchen counter. First floor vanity room has an incinerator. Large breakfast room. Library. A fireplace and tile floor complete the recreation room. Screened porch.

Landscaping designed singularly for this site features a built-up wall garden, fenced rear yard. Second floor sun porch, sprinkling system, double width circular drive, floodlights.

An excellent example of what a house should be for the individual of most discriminating good taste. \$65,000.



4 BEDROOMS, 2 FULL BATHS

Plus both first and second floor tiled lavs.

Squeaking-clean white brick with frame Colonial near the high school and Cranbrook shops.

Both the living room and recreation rooms have fireplaces. There is a first floor library, large modern kitchen, screened porch adjoining the living room, two car garage. Fine carpeting and drapes, also.

The owner has taken personal pride in maintaining this home to the extent that now your initial cost is your final cost. \$39,900.



A COUNTRY RANCH On An Acre

with neighbors, playmates for your children; and near the new Valley Woods School. Impressive gardens resemble a feature in HOUSE BEAUTIFUL.

The screened-in porch with a tiled floor could be very simply converted to a year-round launderdale room. There is a fireplace in the living room, large tiled recreation room, three bedrooms, big garage, and full basement.

All newly decorated, and includes carpeting throughout. This is a home that has many "special" features. Value priced for this area. \$28,500.

Watt, Manuel & Snyder, Inc.

298 South Woodward Midwest 4-6300 Realtors Birmingham, Michigan Jordan 6-2323