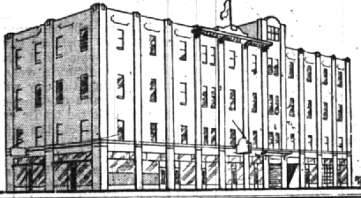


PHONE MIDWEST 4-4300

For Convenient  
MOVING AND STORAGE BY  
**GAUKLER'S**  
AGENT FOR ALLIED VAN LINES  
BIRMINGHAM OFFICE

139 West Maple Ave. in the Field Building



**WEED and INSECT ERADICATION  
LAWN FERTILIZER and SEEDING**

Do not let pests and starvation destroy your lawn. A sick lawn is easy prey for weeds, ants, sod worms, grubs, chinch bugs and many other pests. Let us feed your lawn with a 11-element all-mineral plant food that invigorates growth and color.

We can destroy those obnoxious weeds and other tormenting pests and feed your lawn all in the same application, saving you double or triple cost.



OUR METHOD of spray SEEDING is the most unique and efficient method known, seed is fertility coated for faster germination, spread evenly and accurately. No waste and requiring less seed.

Call us for free estimate, you are under no obligation.

**FERTILIZE-BLOOMFIELD LAWN CULTURE**  
Lincoln 8-0171

There is no better  
time than NOW

**CARPETS**  
and  
**FURNITURE**



*Cleaned-in-the-home*  
by **RIDLEY**

Do you plan to have your wall-to-wall carpet and upholstered furniture cleaned soon? If so, NOW is the best time. And you will find that Ridley is your best choice. Ridley experts do a beautiful cleaning job. They work quietly and carefully. They put every article back in place. And within a few hours after they are finished, your rooms are ready for entertaining guests. Call now for prompt estimate.



**LAUNDRY  
DRY CLEANING  
CARPET CLEANING**

Call Lincoln 8-5595

**Bloomfield Minister  
Has Advice on Travel**

By JULIE CANDLER

To young couples whose marriage rites he will perform, the Rev. Ralph C. Stribe, Jr. may have some advice about travel.

It would run like this: "If you want to see some of the world, see it together before you settle down with a home and family."

That's what he and his wife did. And he recommends it heartily. Mr. Stribe is the new minister of the Middlebelt - Maple area chapel sponsored by the First Presbyterian church.

Right after their marriage last September, the 29-year-old minister and his bride took their savings and moved across the Atlantic ocean toward their first home, a tiny house in Scotland.

WHEN MR. STRIBE'S studies at New college in Edinburgh ended, each packed a minimum amount of belongings in a small rucksack. They tossed their sacks over their backs and hitchhiked around Europe for two months.

"It was a marvelous experience," says the enthusiastic young graduate of Princeton seminary (1955). "Hitchhiking is an excellent way to get to know a lot of people, and it's fairly easy to find rides over there," he says.

THAT'S BECAUSE European motorists don't fear the hold-up and staggings that have made thumbing a nearly lost art in America.

"We only had trouble getting a ride once," said the tall young minister "and that was in a part of France where there had been an incident about a year before."

They stayed mostly in youth hostels.

"They do a lot more hiking and hosteling over there," he explained, "particularly the students. And when we got to Austria, practically everyone we saw was carrying a rucksack."

BEFORE THEIR two-month tour of Europe, the newlyweds shared a house with another family in Scotland. The Stribes occupied one room with a fireplace, and a small bedroom and bath upstairs.

"When you wanted to take a bath, you had to pour lots of steaming hot water in the tub, then else the door. The steam heated the room enough to make it bearable."

While Mr. Stribe studied theology and the New Testament at the university, Mrs. S. taught school.

"She had a terrible time understanding the kids with their Scottish accents," said Mr. Stribe.

THANKS TO THE BHP broadcasts in pure English, the students were able to understand their teacher.

Katherine Mason Stribe, formerly of Pittsburgh, met her husband when they were both attending Princeton seminary. She was



REV. RALPH C. STRIBE, JR.

studying to be a director of religious education.

Before Princeton, Mr. Stribe did more traveling. The son of an insurance executive, he was born in Milwaukee, lived in Omaha, East Lansing, and then Detroit.

HE WAS STATIONED with occupation troops in Korea during his stay in the U. S. Army, and he once worked for several months in Puerto Rico.

He settled down at Ann Arbor long enough to get his degree in 1953.

Since the return to his home state of New York last month by the mission's former minister, the Rev. Samuel Colman, Mr. Stribe and his wife are settled down in the manse at Middlebelt and 14 Mile roads.

And even when it's time for church on Sundays, they have no excuse to travel these days.

For church meets at the Eagle school at 10:30 a.m. every Sunday, and the Eagle school is just across the street from the Stribe home.

That idea about doing your traveling before you settle down has some merit.

**LEGAL NOTICE**

Racoon—Lower Peninsula. The Conservation Commission, by authority of Act 259, P. A. 1955, as amended, hereby orders that for a period of one year from October first, 1957, it shall be unlawful to trap muskrats in Zone 2 except from November fifteenth to December fifteenth, inclusive, and in Zone 1 except from December first to December thirtieth, inclusive.

Approved July ninth, 1957.  
SHELDON W. ALLEN, Chairman  
CLIFFORD KETCHAM, Secretary

Counter-signed:  
GERALD EDDY, Director of Conservation (25-26-27)

B'HAM ECCENTRIC Page  
Thursday, September 12, 1957 7-D

Walter R. Denison, Atty. 615 Oakland, Birmingham 70,333  
STATE OF MICHIGAN—The Probate Court for the County of Oakland.  
In the Matter of the Estate of JOSE MILLER, also known as JOVO MIRO-SOLJEVIC, Deceased.  
At a session of said court held at the Probate Court in the City of Pontiac, in said County, on the 33rd day of August, A. D. 1957.  
Present: Honorable Arthur E. Moore, Judge of Probate.  
Order appointing time for hearing.  
Notice is hereby given and it is hereby ordered that the time and place for hearing on claims against the above estate shall be the 2nd day of December 1957, at nine o'clock in the forenoon at the Probate Court in the Court House at the City of Pontiac, Michigan.  
All creditors or claimants against the above estate are further notified and ordered to prove their claims at the hearing and prior to said hearing to file written claim supporting affidavits and with the fiduciary of this estate, containing sufficient detail reasonably to inform the fiduciary of the nature and amount of claim.  
ARTHUR E. MOORE,  
Judge of Probate.  
26-27-28



**GREETINGS & GIFTS**

are brought to you from  
Friendly Neighbors  
& Civic & Social Welfare  
Leaders  
through

**WELCOME WAGON**

On the occasion of  
Change of residence

Arrivals of Newcomers  
to Birmingham

MRS. H. WALES PRICE  
Midwest 4-0516  
(No cost or obligation)

**ARNO PAINT  
Wallpaper and Windowshades**

3603 NORTH WOODWARD JUST NORTH OF 13 MILE ROAD

thousands of <b>Pastel COLORS</b>	thousands of <b>Deep COLORS</b>	thousands of <b>Asbestos Siding COLORS</b>
--	--	---

Plenty of Free Parking Right Outside the Door  
FREE DELIVERY

thousands of <b>Latex COLORS</b>	thousands of <b>Exterior Trim COLORS</b>	thousands of <b>Shingle &amp; Shake COLORS</b>
---	---	---

OPEN SUNDAY FROM 10 to 3

thousands of <b>Masonry COLORS</b>	sample chips in thousands of <b>COLORS</b>	thousands of <b>Flat Alkyd COLORS</b>
---	--	--

OPEN EVERY EVENING TILL 9 P.M.

We Guarantee to match any <b>COLORS</b> you desire.	Black Out Shades \$2.75 & up	70" or More (many new) Wallpaper Books Murals Matching Fabric
--	------------------------------------	--

**ARNO PAINT & WALLPAPER**

3603 North Woodward Just N. of 13 Mile Rd. LI 9-2961

THE STORE WITH KING SIZE PAINT CANS  
ON THE ROOF

**IMPORTANT  
ANNOUNCEMENT  
TO ALL EDISON CUSTOMERS**

Now available to home owners in this area is a new and better electric water heating service.

Sweeping changes in the basic design of electric water heaters have been made to give them greater heating ability. Heater action is now fully automatic. These things the manufacturers have done at our suggestion. At the same time, economy-seeking revisions in Edison's water heating rate have been adopted. The result is the best water heating service ever offered in Southeastern Michigan.

Many families already use the new service. For the first time, theirs is a feeling of complete confidence in a really modern and adequate water heating system. Like them, you can be comfortable in the knowledge that the safe water heater is now one of the most efficient, too.

**Why a New Water Heating Service?**

Really hot water is an absolute necessity in every home today. It's easier, for example, to get the laundry clean (not just clean looking) with 160° water. But few heaters, other than an electric, heat water that hot unless manual adjustments are made. Such heaters, then, are not truly automatic. And if a fuel-fired heater is permanently adjusted to heat 160°, servicemen say that there is a like-

lihood that heater life will be shortened. With an electric water heater, it is standard practice to heat water to 160° and heater life is not shortened.

Lots of hot water is a modern requirement. New electric water heaters have the ability to operate day AND night as demand requires. There is no period when hot water is not available.

**Exactly What's New About the Heaters?**

Electric heaters have always had superior features. Long life, for one. In the efficient electric heating action, there's no concentration of heat in one small area—no destructive burning action. In addition, the manufacturers have always cooperated in using only the best design and construction materials. These rigid standards make a big difference in lifetime operating and replacement costs. Lifetime costs are also lessened by Edison's present liberal policy of replacing electrical operating parts without charge.

Maximum safety is another feature found in an electric heater. There's never any flame or pilot light to worry about. And because an electric heater is flameless, no part of its exterior shell is ever too hot to touch. An obvious advantage is that only an electric heater can be placed any-

where . . . even where small children play. There is no danger of accidental burns. An electric heater can be placed anywhere for another reason. It has no flue; needn't be close to a chimney. You place the heater where you want to, not where you must—and eliminate long, hot water wasting pipes in the process.

These have always been standard features in any electric water heater. But we felt that the new unit should be better yet. So we asked the manufacturers to redesign them to supply more hot water than ever. This has been accomplished by use of two more powerful heating units. Ordinarily, the lower one alone supplies ample hot water. Once in a while an unusual amount is needed. Then the upper unit switches on automatically to handle the heavy demand.

**New Rates—Dependable Service**

Along with the more efficient and dependable electric water heater goes a new flat rate to make it more economical than ever. You benefit by having available up to 20 hours of water heating for flat rate charges like these:

Flat Rate Charge per Month (Add Sales Tax)	
50-gallon heater . . . . .	\$3.88, net
80-gallon heater . . . . .	5.34, net
110-gallon heater . . . . .	6.79, net

By the month these are slightly higher charges than the older flat rates. But, considering the doubled hours of operation available under the newer rate, the hourly flat rate charge is less.

**Old Customers—New Service**

Present electric water heater owners profit by switching to the new service, too. They can do so simply by calling the nearest Edison office. Then the time-switch will be

changed from 10 to 20 hours of operating time. There is no conversion charge. The new flat rate applies after the time switch has been changed.

**DETROIT EDISON**

See the new, improved electric water heaters at your plumber's, appliance dealer's or nearest Edison office.



**FREE!**  
\$15 MIRROR ALUMINUM BAKE UTENSIL SET

Get FREE with the purchase of a "Magic Touch" AUTOMATIC GAS RANGE during this special offer.

**GAS RANGE DEALERS' Special Sale STARTS TOMORROW**

SEE THE EXCITING NEW GAS RANGES!  
SEE THE AMAZING NEW **GAS TOP BURNER**  
WITH THE **"Magic Touch"**  
THAT MAKES ALL YOUR TOP BURNER UTENSILS Super Automatic

Never has last year's range been so obsolete! Brand new Gas Ranges offer the "Magic Touch" that makes every pot, pan and skillet an automatic cooker. . . the "Magic Touch" that makes every meal a success . . . automatically. The new top burner "feels" the temperature of the pan . . . raises or lowers the flame as needed . . . like magic.

DEMONSTRATIONS of Magic Touch GAS BURNER MAY BE SEEN AT ANY OF THESE DEALERS:

Hot 'N Kold Northland Center	Royal Oak Appliance 208 W. Fifth St. Royal Oak
J. L. Hudson Co. Northland Center	Milks Appliance 1435 Woodward Avenue Birmingham
Montgomery Ward & Co. 400 S. Washington Royal Oak	Kirteck Bros. 16 S. Main St. Clawson

Published in cooperation with GAS RANGE DEALERS by Consumers Power Company