

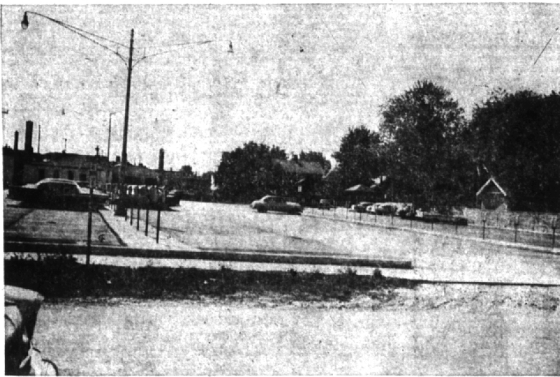
## No Parking in B'ham?—These Empty Lots Say Different



### Pierce and Merrill

The largest of the city's four municipal parking lots, this lot at Merrill, Pierce and Brown receives the heaviest use of all. While often nearly filled and on occasions completely full, there is generally parking space

available for a number of cars even on the busiest days, as this picture from the third floor of the Edison building shows. Normal days always find plenty of room awaiting use.



### Hamilton and Park

Birmingham's second largest municipal lot, off Hamilton between Ferndale and Park behind The Eccentric building, receives only moderate use, even at the busiest times.

Here's plenty of parking for customers of the stores and shops on Woodward north of Maple.

## Convenient Downtown Spaces Are Available

If every community had the downtown parking facilities available, to Birmingham motorists, the hue and cry about parking problems in this country would die a whisper.

Forward planning in the face of a rapidly expanding community has placed four municipal parking lots within a minute's walk of the city's commercial center.

AND PARKING requirements for private businesses have boosted available auto space in Birmingham to the point where this city's parking problems would be solved.—If motorists would use the area set aside for them.

The time consumed in circling the block hoping for a parking space in front of the particular store to which the motorist is going usually is greater than if that same motorist parked in a nearby city lot and walked.

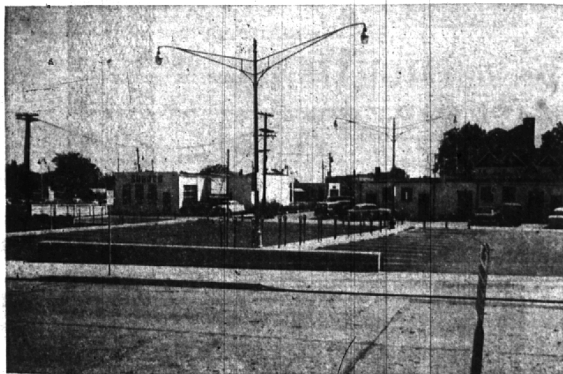
USE OF THESE parking lots, too, would lessen the traffic pile-up in the immediate downtown area. Lots are located at Pierce and Merrill, Hamilton and Park, Hunter and Hamilton, and Forest and Brownell.

THE OTHER, with a red post, allows the motorist to leave his car within a three-minute walk of 12 hours.

Lack of use of these lots has city officials and merchants perplexed—especially so when they see motorists spend a lot of their time and the time of other motorists in trying to back into or pull out of an on-street parking space in the face of heavy traffic.

THESE SAME motorists who aim for a particular on-street area may, by the time they have finished their shopping, be much farther from their auto than they would be if they had used one of the city's lots.

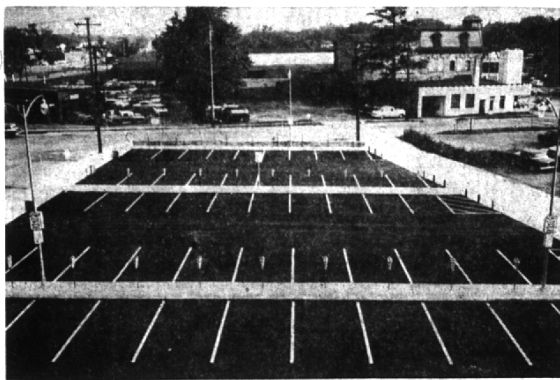
While merchants and residents alike agree that the city needs the parking areas recently made available, they also agree that the city has a parking problem unique in this age of heavy traffic—lots of careless parking lots just seconds away from two main thoroughfares that almost always are jammed with traffic.



### Hunter and Hamilton

One of the city's two smaller municipal lots, this Hunter-Hamilton location was completely empty when this picture was taken. And a check at any time will gener-

ally find the lot empty or with just a car or two using it. Here's parking space aplenty for downtown motorists.



### Forest and Brownell

There was just one car (out of view) in this city parking location at Forest and Brownell when this picture was taken by an Eccentric photographer from the top of the Birmingham theater's fire escape.

Here is plenty of available—and seldom used—space for the customers of establishments on Woodward south of Maple and east of Woodward.

### Chope Re-elected Fathers Association Vice-President.

Joseph E. Chope, 1981. Cross-wick, Birmingham, was re-elected vice president of the Fathers association at Culver Military academy at the annual meeting of the pa-

trons group. The association has an active role in the development of the school and its educational program. Chope's son, Thomas, completed three years training at the Culver Summer Naval school where he received a diploma last week. Another son, Joseph, attended the Naval school in 1951 and 1952.

## VERNON WARE

A HEAVENLY DAYS party table  
... simply out of this world!

Anyone would be TICKLED PINK  
... to serve guests in such style!

### SPECIAL DINNER SET

REG. \$26.95 to \$30.75  
SEPT. 6 thru SEPT. 21 . . . only **\$19.95**

ALSO 20% OFF on most-wanted dishes and accessories.

Everything you need for a dinner party . . . four place settings and serving pieces! Now the lovely dishwasher and oven-safe Vernonware you've always wanted . . . so ideal for wedding, anniversary, Christmas gifts at this low price.

FAVORITE PATTERNS including the famous TICKLED PINK  
HEAVENLY DAYS • ANYTIME • SHERWOOD • ROSE-A-DAY • BLUEBERRY HILL  
AT BETTER STORES EVERYWHERE

## PONTIAC POTTERY

2099 S. Telegraph      FE 2-8612  
2 Miles North of Devon Gables  
on Telegraph 1 1/2 Mile North of St. Lake Rd.  
Open Daily and Sunday 10-8

## 3 DAYS ONLY—Thurs.-Fri.-Sat.

# KRESGE'S

## "BIG BUY" Special

Brand New . . . Authentic Styles!

### Pottery and White Hobnail

## BOUDOIR LAMPS

This Sale  
Only

\$1.77

Save '1.22...Reg. '2.99!

Another "BIG BUY" Special! This time, beautiful boudoir lamps in brilliantly colored pottery or gleaming white hobnail. These delightful new lamps add elegance, a gay, decorative accent to your bedroom, the guest room. Look at your savings, extra special . . . hurry in!

A GAY ASSORTMENT... NEW STYLES!

W. MAPLE AT HENRIETTA

S. S. KRESGE COMPANY

## GROVECREST MANOR

CONVALESCENT HOSPITAL and HOME

- Medical Staff
- Dignified Living
- 24 Hour Personalized Nursing Care
- Excellent Food
- Medical and Surgical Cases
- State Approved
- A Gracious Home for the Elderly
- Flexible Rates

Write or Call for Detailed Brochure

161 State Street  
Pontiac, Mich.
Federal 5-6096

Lamp Repairs

•

Custom Lamp Shades

•

Silver & Copper Metal Plating & Buffing

•

WE SPECIALIZE IN ANTIQUE LAMP WORK

•

Lamps & Shades

All Types in Stock

See

## Jim The Lampman

at

# LAMP CRAFT

13 1/2 Mile & Woodward      LI 9-1399  
OPPOSITE RICHARD'S DRIVE-IN