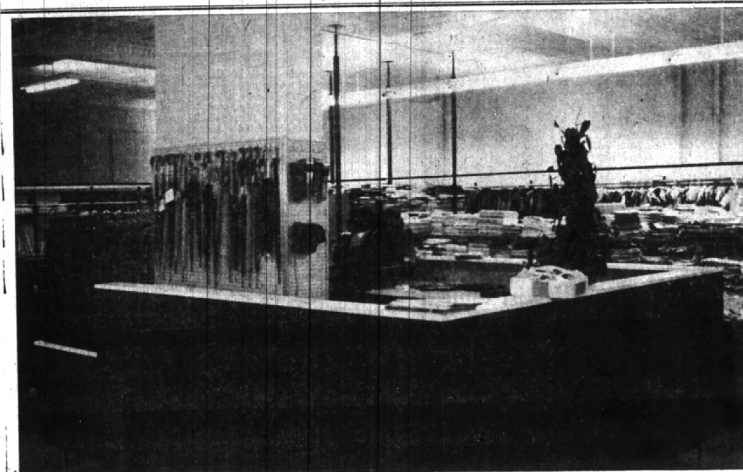


BUSINESS BRIEFS



Mulholland Departments Remodeled

A \$17,000 remodeling and redecorating program was completed recently in the women's, infants', children's and drygoods departments at the F. J. Mulholland Co. store,

233 N. Woodward. New fixtures were installed and changes in the layout made. The work took five days to complete.

DOWN TO EARTH

By ALICE WESSELS BURLINGAME
Special Writer for The Birmingham Economic

B'HAM ECCENTRIC
Thursday, October 31, 1957
Page 3-D

Modern Methods Yield Better Gardens

Modern methods of gardening which are available to the modern gardener through the channels of modern tools, insecticides, light weight fertilizers, and the numerous channels of instruction have made it possible for us in America to have better gardens.

We must not overlook the impact of competition of trying to excel one's neighbor.

By research it has been shown that new methods of gardening reduce manpower hours by one third. For the spare time gardener who does all of his own work one half acre is supposed to be sufficient space for him.

Flowers from perennials, shrubs and trees provide the most economical type of design for the minimum hours invested by a gardener. If you have a rock garden consider it the luxury item when you calculate the number of hours needed for maintenance.



Mrs. Burlingame

When you DESIGN your garden you will find that straight lines reduce the size of your property from the visual viewpoint while curved lines will provide an illusion of greater distance. Be sure that those curves are long sweeping curves and not "busy wiggles."

All of these facts have been tossed to you to provide fuel to your thinking as you approach winter and are evaluating your existing garden. Right now while your garden experiences of 1957 are fresh in your mind, write down the changes you would like to make next spring.

people who will have a new lawn next spring.

Just returned from a Horticultural conference in Indianapolis where I gathered the story from an expert on how to grow a lush lawn on subsoil without drawing in loads of top soil. You will be reading this story in the spring.

The Fishpaler home at 18820 Wilshire had a handsome hedge of pink geraniums which made me use my car brakes one day while driving.

At 1414 Lakeside, at the corner of Redding they had a problem of preventing erosion where their lawn met the public walk. They have built a handsome rock wall which adequately handles the 3 foot difference in elevation.

We must not overlook the control role the roots of the grass to the rock wall boundary, as well as the ornamental plants on the rock wall play in controlling water seepage.

1958 EDSEL 2-DOOR SEDAN With ... "Tele-Touch" Automatic Transmission

INCLUDES:

- 303 H.P. 8-Cylinder
- 4 Barrel Carburetor
- Oil Filter
- Windshield Washer
- Turn Signals
- 800 x 14 Tires
- Dial Temperature Heater & Defroster
- Air Foam Cushion
- Undercoat
- Dual Visors
- Dual Twin Headlights
- Front & Rear Arm Rest
- Positive Action Wipers



\$2595.00

*Plus 3% Mich. Sales Tax and License

Jerry Robinson

EDSEL SALES INC.

408 S. WOODWARD — Midwest 6-8700 — Jordan 6-1556 — BIRMINGHAM



A BRIGHTER FUTURE for your children may depend on higher education. Plan NOW for Life Insurance to provide the necessary funds — no matter what happens to you.

THE MANUFACTURERS LIFE
INSURANCE COMPANY

BRANCH OFFICES

1880 Penobscot Bldg., Detroit 26
W. M. Milligan, C.L.U., Branch Mgr.
Phone: WO 1-3191

2812 W. Grand Blvd., Detroit 2
Richard W. Schmid, C.L.U., Branch Mgr.
Phone: TR 5-3230

Birmingham Representative: David K. Falvey, C.L.U.

Who'll Volunteer?

Older teenagers or young adults are needed to assist in a recreational program with children. If you are experienced in tap or ballet instruction, you are needed to instruct a group of children one afternoon a week at your convenience. Please call the South Oakland Volunteer Bureau at our new telephone number LI 7-1617, a United Community Services agency serving from 8 Mile road thru Birmingham-Bloomfield.

At Conference

Irving E. Menucci, administrative assistant in Bloomfield Hills schools, was in New Orleans last week attending a national conference of school business administrators.

Looking for a pet for the children? See the Classified columns under "Pets for Sale."

MIRACORD XA-100

THE ONLY 4-SPEED 2-IN-1 FULLY AUTOMATIC CHANGER PLUS AUTOMATIC MANUAL PLAYER



- Intermites 10" and 12" records
- Jam-proof "free wheeling" tone arm
- Interchangeable plug-in head

Complete, ready to use, less cartridge

\$67.50

Far ahead! The Finest By Far Ask for a Demonstration. Push-button automatic START, STOP, REPEAT, PAUSE, FILTER. New! 4-speeds. Converts instantly from changer to manual—more built.

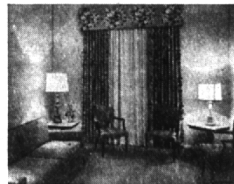
McCallum & Dean

MI 4-5230

409 E. MAPLE
Birmingham



Beautiful chapels are available to meet every requirement for both size and religious appointment.



For the family there is complete privacy in quiet, peaceful surroundings. Completely private entrances and exits lead to and from these rooms.

The Business Aspects Of The Funeral Should Be Understood By EVERYONE

There was a day, not long past, when it was disturbing to the family to speak of life insurance. Today it is an accepted part of family planning. We respectfully suggest that the time has come for the family to assume the same objective attitude toward funeral arrangements.

Today's Funeral Director, his facilities and services are modern, and dignified. They are based upon a determination to provide the highest type of personal service, both before and at the time of family crisis.

You should know about these services—now—so that any doubts, misgivings or fears may be discussed freely and at a time not burdened by personal loss.

Questions such as these will be discussed honestly and freely: What should I pay for a funeral? How should I choose a Funeral Director? What services should I expect from the Funeral Director? Or any other questions you may wish to ask. Consultations and daily tours without obligation.

DIRECTORS

William V. Vasu Edward J. Lynch Dan C. Flickinger

You are cordially invited to visit our establishment.
Visiting hours: 9 A. M. to 9:30 P. M. Daily

WM. VASU Funeral Homes

4375 North Woodward Ave., Royal Oak, Michigan
Between the thirteen and fourteen mile roads.

Liberty 9-0500

BEAUTIFUL FORMICA DINETTES

AVAILABLE IN BLACK WROUGHT IRON AND CHROME

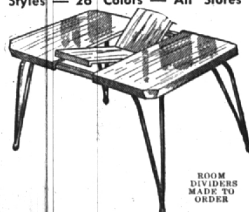
MADE TO ORDER

ANY Shape Size Style **\$59.95** and up

Lifetime Guarantee On All Chrome
26 Styles — 26 Colors — All Stores



Size 30 x 48 with Formica Top and Chrome Frame



ROOM DIVIDER MADE TO ORDER

Open Daily 10 - 8:30

Beautiful FORMICA BUFFETS Made To Order

METALMASTERS MFG. CO.

4600 N. WOODWARD, Near 14-Mile Road

Liberty 9-3011

The Welcome Wagon Hostess

Will Knock on Your Door with Gifts & Greetings from Friendly Business Neighbors and Your Civic and Social Welfare Leaders

On the occasion of Change of residence Arrivals of Newcomers to Birmingham

MRS. H. WALES PRICE
Midwest 4-0516
(No cost or obligation)