

# The Birmingham Eccentric

SECTION C

Thursday, October 31, 1957

All people cannot be leaders. But more of us can be good followers, loyal and faithful to the best that leaders offer. Good followers are an integral part of the structure that good leaders blueprint. Not all can be keynotes in the arches; but we can seek to be strong foundation stones.

## House Organs ----?

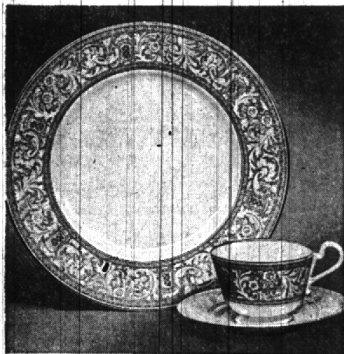
YES... WE PRINT MORE PUBLICATIONS THAN ANY PRINTER IN MICHIGAN

Three Detroit Salesmen... TR 5-2629... Plant MI 6-2000

The AVERILL PRESS INC. of Birmingham  
A COMPLETE PRINTING SERVICE—FROM TYPESETTING TO MAILING

FORMERLY THE BIRMINGHAM ECCENTRIC PRINTING DEPARTMENT

## Franciscan fine China



### Renaissance

Design becomes texture when this shadow grey arabesque is delicately etched on the luminous ivory tone of Franciscan fine China. Elegant for formal occasions; durable for daily use.

RENAISSANCE GREY \$21.95—5 Piece place setting  
RENAISSANCE GOLD \$38.75—5 Piece place setting

## LAKES' JEWELERS

"The Sterling Store of Birmingham"

WOODWARD at MAPLE Open Friday Evenings until 9:00

MI 4-5315



MRS. LOREN D. RILEY

## Married Saturday, Honeymoon to Bermuda

St. Hugo of the Hills church was the scene Saturday morning for the marriage of Mary Jean Stillman to Loren Dale Riley. The Rev. Francis T. Stack performed the 11 o'clock ceremony in the presence of 300 guests.

The bride is the daughter of Mr. and Mrs. Harry B. Stillman of Berwyn, Birmingham. Her husband is the son of Mr. and Mrs. Boyd E. Riley of Holton, Kan.

THE BRIDE WORE a gown fashioned of chantilly lace over satin featuring a sash neckline with pearls and a chapel length train. Her madonna veil was of matching lace. A bouquet of feathered carnations and stephanotis completed the bridal picture.

Mrs. John Handley was matron of honor. Bridesmaids were Kay Hopkins, Mrs. Edward Gergosian, Mrs. Edward Schley and Patricia Phillips was junior bridesmaid. Deborah Zisette and Denise Wallisch served as flower girls. Attendants were gowned in emerald green satin with silk chiffon panels in the back. They wore matching headbands trimmed with pearls and carried bouquets of autumn hued mums.

DRESSES OF RUST velvet with gold satin sashes were worn by

### Delta Zeta Alums Plan Nov. Meeting

Slides of Japan will be shown to the Oakland group II alumnae of Delta Zeta at their next meeting Nov. 6. Jane Carpenter, a teacher at Oakland School in Royal Oak, spent last year teaching in the American Dependents' school at Kokura, and made this her base for weekend and vacation excursions of that country.

Mrs. William A. Newman and Mrs. Gregory W. Dean will be hostesses at the home of Mrs. Robert L. Morrison, 24321 Kenosha, Oak Park.

### Talk on Decorating

St. Ann's guild of St. Columban's church is presenting "Color Comes Calling," a home decoration demonstration, Tuesday at 7:30 p.m. at Hospitality house, Northland center. Gifts will be distributed and a dessert will be served. Mrs. Robert Perry, 1772 Torrey, Birmingham, is taking reservations.

Birthdays, anniversaries, guests, births, parties are all news—call the society editor about them.

NOW a...

"Slender Eeze"

Reducing Lounge at

Sessel's Beauty

SALON

Owned and operated by Mr. Sessel, formerly of 344 1/2 Fifth Avenue

LATHRUP Southfield at 12 Mile EL 6-2144

DETROIT 15309 W. Seven Mile VE 8-3453



Announcing two new Slenderella salons in the Detroit Area  
Eastland Center Concourse DR 1-3300  
Birmingham, Michigan (263 Pierce Street) MI 6-8500

Slenderella International announces the opening of two new Detroit salons.

It's everything you've always wanted... Fabulous Slenderella International, designed at a leading University out of advanced modern knowledge of the body and how it works. To firm you, mold you, give you a wonderful lift. Reproportion your measurements to the exact dress size ideal for you.

You are different and we know it! We love to work out special problems... Answer your every question... With our wonderfully complete program—individualized just for you and your very special needs.

Free Trial—Phone now or come in to your Slenderella Salon—You'll love the care—the individual attention—the privacy—the charming decor—it's so relaxing—it's like a caress... \$2.00 per visit—Weekly budget plan. Open 9 A.M. to 9 P.M. Phone today... We'll keep our promise.

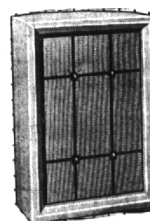
slenderella. INTERNATIONAL  
NEW YORK, CHICAGO, PALM BEACH, BEVERLY HILLS, PARIS AND PRINCIPAL CITIES

K. L. A. Detroit's High Fidelity Headquarters!

Hi-Fi Nationally Known COMPONENTS

DO IT YOURSELF - SAVE 50%

Build Your Own Electro-Voice LOUDSPEAKER ENCLOSURE



Kits from \$26 to \$118

You'll enjoy building your own Loudspeaker Enclosure—and you'll save as much as 50% of the cost of the factory-finished enclosure. Electro-Voice Do-It-Yourself Kits are complete—with pre-cut parts (many sub-assembled)—all materials and illustrated step-by-step instruction books. Assembly is not at all difficult—and there are Electro-Voice Finishing Kits available, to enable you to finish your enclosure in a professional manner. Electro-Voice Do-It-Yourself Kits are available for the famous Patrician—Georgian—the Centurian—Regency—Empire—Baronet and the Aristocrat. See these enclosures—and the Kits at K. L. A.—and ask about the Electro-Voice Loudspeakers to be installed in your enclosure.

### It's New! Recording Resale Service

If you have several "unwanted" 12-inch Long Play Recordings—they can be turned into CASH or CREDIT through this new Resale Service at K. L. A. Simply bring your unwanted, but still

playable 12-inch Long Play Records to the Record Department. We'll put them on Record Resale at prices established by YOU—and when the recordings are sold you get CASH or CREDIT.

## ANNOUNCING . . .

a bridal preference registry

for the contemporary minded

a splendid selection of stainless flatware and holloware... elegant dinnerware... exquisite imported and domestic crystal... exciting and colorful serving pieces and decorative accessories

ritter's

UNUSUALS

150 west maple road • midwest 7-0204 • birmingham, michigan

K. L. A. LABORATORIES, INC.

7375 WOODWARD AVE

Main Store: TRinity 4-1100  
Branch Store: VErmont 7-9338

13725 W. McNICHOLS RD.

BOTH K. L. A. SHOWROOMS OPEN 'TIL 9:00 O'CLOCK EVERY EVENING, MONDAY THROUGH FRIDAY