

A household dominated by love between parents and between parents and offspring, is a monumental achievement... worthy of great admiration and emulation. When a home knows such happiness, the infrequent slight discords that may arise are quickly forgiven, and forgotten. Such homes are Heaven's outpost!

The Birmingham Eccentric

SECTION D

Thursday, October 3, 1957

DOWN TO EARTH

Challenge to Grow Plants from Seeds

There is a challenge ahead for gardeners to grow plants from the seeds they have collected. Some artists use seed as interest material in making pictures, gluing the seeds on sandpaper or another type of selected surface.

Be sure and gather ripe seed. If you wait too long Nature has a way of dispersing them for the benefit of the next season. They can be gathered in plastic bags and labeled for later removal from chaff, pulp, wings, parachutes which might be their protective cover.

IT IS IMPORTANT to clean your seeds due to the fungus which might form from moisture between the protective covering and the seed itself.

After cleaning, another step to assure success is to allow them to dry on an open surface with a circulation of air around them.

Most of your seeds should be stored in an area of the house where the temperature is around fifty degrees. You can eat fruit and save the seeds, especially of cherries, peaches, and plums.

For the non edible fruit, place the fruit in a jar, fill with water to ferment, then separate the seeds from the fruit with a strainer and clean under a wash of water in a strainer.

SOW SEEDS in a mixture of three parts sphagnum moss and one part sharp sand in a flat. Gather acorns and plant them as soon as they are gathered in their entirety. Place them where you wish them to grow as they are difficult to transplant.

There are a few exceptions to the rules I have given you. Cotton-aster, roses, junipers and berries which have a fleshy coating. Dry

By ALICE WESSELS BURLINGAME

Special Writer for The Birmingham Eccentric

Students Receive Degrees from MSU

The following Birmingham and area students have received degrees from Michigan State University this summer: William D. Matheson, E. Long Lake road, B.A. psychology; Robert C. Gasser, 708 Suffolk, B.A. social science; Robert D. General, 29220 Briarbank Court, B.A. general business and Jon E. Clarke, 792 Willis, B.A. Psychology.

Nancy Lee Gentry, 1383 York-shire, B.A. elementary education; Gordon A. Mutch, 1490 Emmons, B.A. divisional social science; Thomas E. Rickelman, 515 Tooting lane, B.A. Economics; Barbara L. Sheppard, 1339 N. Woodward, B.S. home economics retailing and Nancy Kay Woodman, 2555 W. Wattle, B.S. zoology.

Want ads cannot be accepted after 5 p.m. each Tuesday.

THE OUTSIDE garden had all kinds of ground covers but I liked ginger best which you can use in Birmingham outdoors. Espaliered against a wall were grapes. Why isn't that a good idea for brick walls which often look so bare?

I have just returned from an eastern trip and one of the highlights was a return visit to the Gardener Museum in Boston in the Fenway district. There you have art, landscaping, and music presented in a grand Italian structure set up by an endowment to assure the lovers of art a cultural center "forever."

THERE THE VISITOR sees the paintings of many of the old masters, concerts are provided by famous musicians, and the lover of gardens can't help but come away enriched by ideas to try back home.

Most of the year the courtyard has windows of natatorium which fall twenty three feet in their grandeur like a waterfall.

The ground cover for the courtyard has wandering jew which gave an exotic effect among the permanent plantings of green, while the trellis in the courtyard were provided by potted plants.



Mrs. Burlingame

Who'll Volunteer?

Two women drivers are needed every day for approximately one (1) hour from October 18 through November 7 to deliver Torch Drive kits to the workers. For further information, please call South Oakland Volunteer Bureau, Lly 7-1950, a United Community Services agency serving from 8 Mile road thru Birmingham-Bloomfield.



RETIREMENT CAN BE FUN when you have the regular income provided by Life Insurance. but you should start planning NOW. Call the Man from Manufacturers today.

THE MANUFACTURERS LIFE INSURANCE COMPANY

BRANCH OFFICES

1838 Pensacola Bldg., Detroit 26
W. M. Milligan, C.L.U., Branch Mgr.
Phone: WO 1-3191

2842 W. Grand Blvd., Detroit 2
Richard W. Schmid, C.L.U., Branch Mgr.
Phone: TR 5-3230

Birmingham Representative: David K. Falvey, C.L.U.

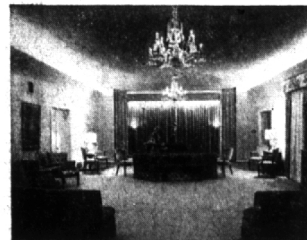


Anniversary and Rededication

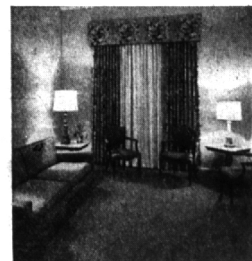
On the occasion of our anniversary—one year in our new home, 35 years in your community—we wish to express our sincere appreciation to the many families who have placed their confidence in us. Also, on this anniversary, we feel that it is entirely appropriate that we rededicate ourselves to those principles that have brought honor to our institution throughout the years: A sincere belief in the inherent dignity of man. A desire to serve all, regardless of economic station or religious belief. A determination to provide the personal and intimate services required with understanding, reserve and respect. A willingness to provide facilities that are both beautiful and appropriate, and in keeping with the wishes of the family. And, above all, the hope that we may lighten the burden of the families we serve. To these principles we are dedicated.



This tastefully appointed area provides access to the unusual facilities of one of the country's most outstanding establishments.



Beautiful chapels are available to meet every requirement for both size and religious appointment.



For the family there is complete privacy in quiet, peaceful surroundings. Completely private entrances and exits lead to and from these rooms.



The business of arrangement may be conducted in a completely relaxed atmosphere. No detail or request is too small or large to be honored.

You are cordially invited to visit our establishment.
Visiting hours: 9 A. M. to 9:30 P. M. Daily.

Wm. VASU Funeral Homes

4375 North Woodward Ave., Royal Oak, Michigan
Between the thirteen and fourteen mile roads.
Liberty 9-0500

WASHABLE RUGS

up to 50 lbs. washed & dried
One Day Service

FLAT WORK IRONED

One to Two Day Service

BIRMINGHAM LAUNDROMAT

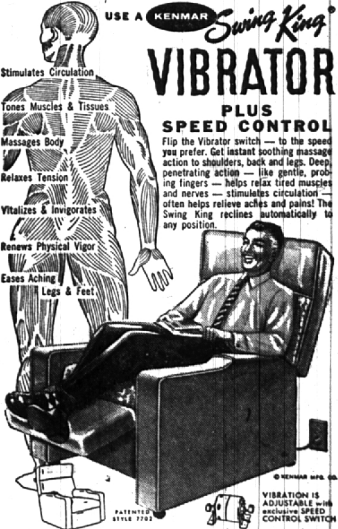
1000 S. Adams MI 4-8225



NEW STORE HOURS

NOW OPEN MONDAY EVENINGS
OPEN MONDAY—THURSDAY—FRIDAY
Till 9 P.M.
Tues.—Wed.—Sat. Till Six

YOU MUST RELAX to survive today's brutal pace!



VIBRATOR

PLUS SPEED CONTROL
Flip the Vibrator switch — to the speed you prefer. Get instant soothing massage action to shoulders, back and legs. Deep penetrating action — like gentle, probing fingers — helps relax tired muscles and nerves — stimulates circulation — often helps relieve aches and pains! The Swing King reclines automatically in any position.

VIBRATION IS ADJUSTABLE with exclusive SPEED CONTROL SWITCH

Today's greatest chair value, the nationally advertised, Swing King Vibrator costs no more than an ordinary easy chair... costs far less than other massage chairs. Choice of smart coverings and colors. Save \$100.00 at this low price.

\$89.50

Charge It—30-60-90 Days Budget Terms Up to 24 Months

Harbor HI-WAY FURNITURE MART

1532 WOODWARD AVE. BIRMINGHAM, MICH.

4 BLOCKS N. OF I-4 N.E. RD. Midwest 4-440