



### Among Largest in Miracle Mile

One of the largest stores in Miracle Mile is this new Lion Stores outlet, branch of one of Pontiac's leading stores for 37 years.

## Lions Store to Be Mile's Largest Independent Apparel, Shoe Shop

The largest independent apparel and shoe store in Miracle Mile... that is Lion Store of Pontiac.

One of the leading stores in Pontiac for almost 37 years, this new branch covers 12,000 square feet devoted to the finest nationally advertised brands of wearing apparel and shoes for the entire family.

**SERVICE WITH A SMILE!**  
and as fine a car wash as you've ever had

### WILLIE'S CAR WASH

Specializing in Polishing, Shampooing, Blue Grease, Chrome and Upholstery cleaning. All done under Willie's watchful eye. Try in here and you'll be a satisfied customer always.

Located at  
Bill Hall's Standard Service  
218 N. Woodward Ave.  
Birmingham  
Phone MI 6-7744



You'll always find the best  
at  
**BIRMINGHAM'S SENIOR REALTORS**

**MAX BROOCK INC.**  
MI 4-6700

There is no better  
time than NOW

**CARPETS**  
and  
**FURNITURE**



*Cleaned-in-the-home*  
**by RIDLEY**

Do you plan to have your wall-to-wall carpet and upholstered furniture cleaned soon? If so, NOW is the best time. And you will find that Ridley is your best choice. Ridley experts do a beautiful cleaning job. They work quietly and carefully. They put every article back in place. And within a few hours after they are finished, your rooms are ready for entertaining guests. Call now for prompt estimate.

**Ridley**  
SERVICES

**LAUNDRY**  
**DRY CLEANING**  
**CARPET CLEANING**

No Inter-Zone Charge  
Dial O and ask for ENTERPRISE 6655

downtown Pontiac store.

DESIGNED by George Baker of Grand Rapids, the store is equipped with the latest ideas in recessed lighting, using a combination of fluorescent and incandescent. Display cases and corners are of lined oak.

Approximately 35 employees will work in the store which will feature modern charge plate shopping. Store hours will be from noon until 9, five days a week and 10 until 9 on Saturdays.

Opening day specials feature many nationally advertised brands of wearing apparel for the entire family.

A dead person may vote, legally, if he mails an absentee ballot and then dies before election day.

Habeas corpus literally means, "you may have the body."

### GOOD LOOKING!



### GOOD HEARING!

Others have tried - now Sonotone has hidden its latest transistor hearing aid in light, graceful eyeglasses. Worn as one unit - nothing else to wear. Choice of smart styles for both men and women. Look your best while hearing your best.

COME IN, PHONE OR WRITE  
FREE DEMONSTRATION

**SONOTONE**  
**OF ROYAL OAK**

106 East Fifth Street  
L. M. TIFFIN, Mgr.  
LI 8-0360



### IT'S TIME YOU MET HIM!

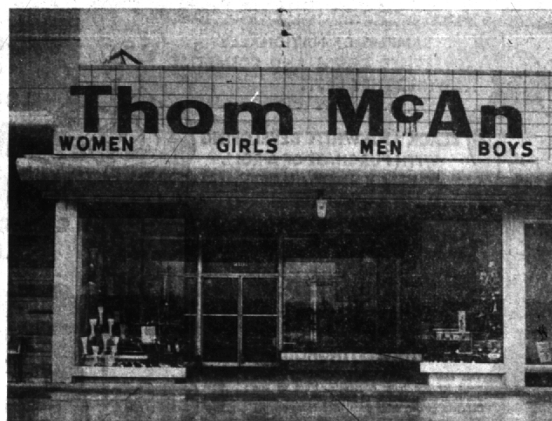
He's our service expert. His job is to keep your hard-working watch in easy-going action. Stop in. Let him inspect your valuable watch today. A quick check-up now may save you hours of delay and dollars of repairs later.

MI 4-8215

**George Ross**  
Jewelers

244 E. Maple  
Free Parking In Rear

Official Watch Inspectors  
For New York Central and  
Pere Marquette R.R.



### The 37th in Michigan

Here is the newest store in the vast Thom McAn shoe chain, one of 760 across the country and the 37th in Michigan. It is the first family store in the northwest area and offers footwear for every member of the family. Departmentalizing has been

accomplished by distinctive color schemes. The new store is operated by Miracle Mile Thom McAn, Inc., and is managed by Theodore T. Jarvis, who has been with the firm five years.

### Gets Promotion From Wittenberg

Hugh P. Robins, assistant director of admissions at Wittenberg College, Springfield, Ohio, has been promoted to alumni secretary.

Robins is the husband of the former Mary Lou Rutz of Birmingham.

A FORMER Wittenberg athletic great, Robins joined the Wittenberg staff in 1956. He is a veteran of two years' service with the army and has taught for two years in the Louisville, Ky., school system.

### Marine Takes Part In NATO Exercise

WESTERN TURKEY - Marine T-3et, Raymond E. Decker, son of Mr. and Mrs. Raymond Decker, 215 W. Big Beaver rd., Birmingham, Mich., and husband of the former Miss Donna M. Smith of Cambridge, Idaho, took part in "Operation Deepwater," a recent North Atlantic Treaty Organization amphibious exercise in the Saros Gulf area of Western Turkey.

The operation was designed to exercise the military defensive capabilities of the NATO amphibious forces.

**SHIRTS  
LAUNDERED  
4 HOUR  
SERVICE**

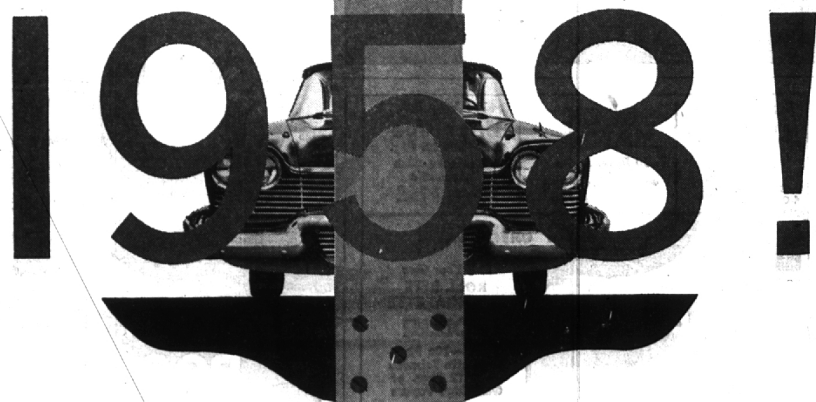
*Birmingham*  
DRIVE-IN CLEANERS

• WOODWARD AT ADAMS ROAD  
• W. MAPLE AT CRANBROOK ROAD

How the

**TOTAL  
DESIGN**

of THE FORWARD LOOK becomes your guide to a sound buy for



You'll be quick to see how soundness in overall design means soundness in your buying the moment you meet any one of the five great Forward Look cars for '58.

They will prove once again that only when cars are conceived as a whole—from suspension to silhouette—can design be so clean, so uncluttered, so advanced. And this means honest, lasting value for you.

For '58 Plymouth, Dodge, De Soto, Chrysler

and Imperial have the functional, finned beauty that endures. The complete integration of form and function in The Forward Look stems from its total design.

Only tested Torsion-Aire Suspension gives you a ride so controlled, so level... permits design of a car so spacious yet so low... and at no extra cost! Pushbutton TorqueFlite Transmission—with proven mechanical

controls placed on the left for safety—joins big new Advance Design engines to give you an unmatched combination of smoothness, economy and performance.

So when all is said and done, compare! For here is a total design for clean looks, controlled ride and top value—you'll get only in Plymouth, Dodge, De Soto, Chrysler and Imperial for 1958.

COMING YOUR WAY SOON—SEE THEM AT YOUR NEARBY DEALER'S

FOR '58, MORE THAN EVER, THE FORWARD LOOK IS THE ADVANCE DESIGN

Don't miss TV's number one dramatic hour "CLIMAX"—"Live" from Hollywood; new show, star casts each week—Thursday, 7:30 P.M., Channel 2.

**CHRYSLER CORPORATION**

PLYMOUTH • DODGE • DE SOTO • CHRYSLER • IMPERIAL