

House Organs ----?

YES... WE PRINT MORE
PUBLICATIONS THAN ANY PRINTER IN MICHIGAN

Three Detroit Salesmen... TR 5-2629... Plant MI 6-2000

The AVERILL PRESS INC. of Birmingham
A COMPLETE PRINTING SERVICE—FROM TYPESETTING TO MAILING

FORMERLY THE BIRMINGHAM ECCENTRIC PRINTING DEPARTMENT

1958 EDSEL 2-DOOR HARD TOP

With All This
Equipment...

800 x 14 White Walls
Tefitech Auto-Transmission
Safety Package
Heater & Defroster
8 Tube Radio
Positive Action Wiper
Back Up Lights
Glove Box Light
Wheel Discs
Electric Clock
Undercoat
Foam Cushions



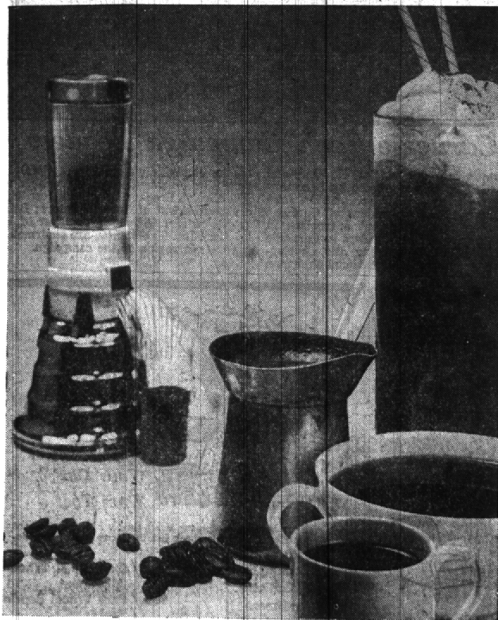
\$2875⁰⁰ *

*Plus 3% Mich. Sales Tax and License

Jerry Robinson

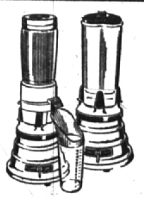
EDSEL SALES INC.

408 S. WOODWARD — Midwest 6-8700 — JORDAN 6-1556 — BIRMINGHAM



Done... with the new Waring Coffee Mill

Your reputation as a host is made! With the new Waring Coffee Mill, dozens of exotic coffee brews are yours. Friends will be delighted when you serve Italian Espresso, an ibrik of Turkish coffee, or a tall glass of Cappuccino at your next party. No coffee can match coffee made from the freshly ground bean, and that applies to flaming Café Brûlot or the mouth-watering Russian recipe blending cocoa with coffee. Only the absolute freshness of on-the-instant grind can do it—and that freshness is yours with the Waring Coffee Mill, the mill that grinds your coffee when you want it, the way you want it. Sixteen different grinds. Another smart attachment for every Waring Blender.



Start your week-end casually the Coffee Mill way. See your electric housewares dealer today

MINERS

Available at
11 W. Long Lake Rd. — 1 Block west of Woodward

DOWN TO EARTH

By ALICE WESSELS BURLINGAME
Special Writer for The Birmingham Eccentric

2-D

THE BIRMINGHAM ECCENTRIC

October 17, 1957

1000 Acres Comprise Longwood Gardens

Travelers can come and go looking for beautiful sights and experiences to enrich their lives. European gardens are breath-taking in their splendor, the culmination of generations of knowledge in horticulture.

If you want to visit a garden which could win the race of competition by a nose length, plan on an unburied visit to the Longwood gardens at Wilmington, Del.

If your visit takes place in the summer months you will want to plan to be there on Tuesday due to the evening programs which are an important part of the setting in the outdoor theater. These programs could be musical, dramatic or perhaps the ballet.

The late Pierre S. du Pont set up a sixty million dollar trust fund to assure the care and a continual growth of this fine horticultural center.

IT HAS BEEN SET UP with the same spirit that Mellon had when he gave the National gallery in Washington. The plans are to gather the finest plant material, displayed in fantastic landscaping, for the pleasure and education of the peoples of the world. The site covers over a 1000 acres and three acres are under glass.

There are over 22 separate displays of fountains. Its grandeur rivals Versailles and Fontainebleau. Some of the fountains rise over 140 feet. The carillon bells add a great deal to the setting by their music.

It is possible to visit this center any month of the year and enjoy

the under glass gardens as well as the changing scenes with the outdoor plantings. The sculpturing is an important part of the splendor of these works of art become an effectual part of the landscape pattern.

THE FOUNTAIN DISPLAYS at night are among the most spectacular ever devised. Colored lights play upon the plumes of water which rise into misty, fan-shaped sprays. There is an interplay of patterns caused by the lights and the jets of water.

The curtain of the outdoor theater is a curtain spray. The dressing rooms under the stage which is a plateau of green grass would rival the finest in the country for the comfort of the performers.

The foundation is constantly sending out explorations in conjunction with the United States department of agriculture for the goal of seeking new types of plants for the ultimate use of the public.

When I visited there recently the staff was anxious to see the flowers from nearly 200 budded nuns which were being seen for the first time in the United States, the result of an exploration to Japan.

YOUR COLUMNIST is trying to sell her husband on the fact that she should see more European gardens. She will have to hide this section of The Eccentric when it comes.

If you have Viburnum Carlesii, Burkwoodii, or Carcephalum do not



Mrs. Burlingame

Who'll Volunteer?

The Birmingham League for the Handicapped need volunteer salesmen. Please call the South Oakland Volunteer Bureau for information on time at 1-1-1690, a United Community Services agency serving from 8 Mile road thru Birmingham-Bloomfield.

News copy submitted early is necessarily given preference, so the "early bird" usually gets the space.

Nearly everyone likes to do business with
BIRMINGHAM'S SENIOR REALTORS

MAX **BROOK** INC.
MI 4-6700

20th Anniversary Sale

Up
To
1/2
Off
on

selected
merchandise

Kay Baum
162 W. MAPLE BIRMINGHAM

SERVISOFT SOFT WATER SERVICE

OVER 2500 OF YOUR
NEIGHBORS USE IT...

WHY NOT CALL
TODAY?

Midwest 4-4334

Introducing MNB's NEW

- Your name and account number printed on each check.
- Distinctive, popular size, card type checks.
- Handsome wallet container.

SPECIAL CHECKING ACCOUNTS

Only \$2.50 for 20 checks—No Minimum Balance Required
No Maintenance Charge—No Charge For Statements

MANUFACTURERS NATIONAL BANK



Offices throughout Detroit
and the Metropolitan Area

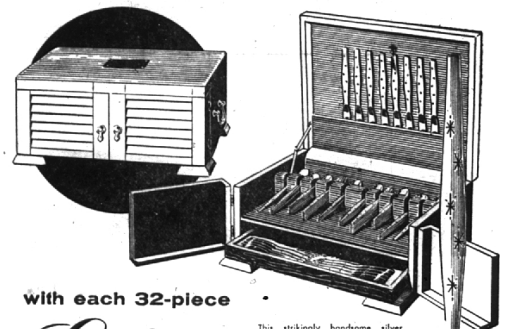
Member Federal Deposit Insurance Corporation

Lakes' Jewelers Present

LIMITED TIME OFFER

free

AMERICA'S NEWEST DOOR-DRAWER CHEST



with each 32-piece

Gorham
STERLING
SERVICE FOR 8

This strikingly handsome silver door-drawer chest, an entirely new concept in chest design, has brass handles, lowered doors, a pull-out drawer and nameplate.

STARDUST \$214.



CELESTE \$214.



BUTTERCUP \$192.



WILLOW \$214.



BONDO \$192.



STRASBOURG \$214.



LYCIC \$192.



CHANTILLY \$192.



MELROSE \$240.



CAMELLIA \$192.

Remember
LAKES'
BRIDAL REGISTRY
is a must
For the Bride-To-Be

LAKES'
JEWELERS

"The Sterling Store of Birmingham"
WOODWARD at MAPLE
MI 4-5315

Open Friday Evenings Until 9:00