

a line... from les

A relatively new nemesis on the sports scene—influenza—may raise havoc with Birmingham high's chances on the gridiron Friday night against Ferndale.

The state's flu epidemic—which has worked its way through Detroit, Port Huron, up to Bay City and across to Grand Rapids and the rest of western Michigan—moved into Birmingham in full force over the weekend.

And while absenteeism at Birmingham High were much lower than reported at other points throughout the state, the Maple football team is hard hit.

As of noon Tuesday, Coach Carl Lemle reported nine varsity grid-ders home sick.

Nearly all were first-line offensive or defensive men. How many of this group will still be out of action Friday night is strictly a guess. Lemle said he was afraid to hazard a guess how many more Maple footballers might be affected before the Ferndale game.

HEADING the list of players out with the flu was Chuck Gibson, star Maple fullback. Unlike many of the others who were stricken over the weekend, Gibson left school Tuesday morning. It was doubtful if he would be back in the Maple camp by Friday.

The remaining list included Phil Russell, No. 2 quarterback; Dave Mahliker, starting right half; Bob Lovell, starting tackle; Mike Brandt, defensive linebacker; Rod Ruddy, No. 2 left half; Frank Pershaw and Dave Randolph, regular defensive tackles; and Bob Gayer, defensive guard.

GUYER has suffered a weight loss of 20 pounds in two weeks. His illness was not known Tuesday.

Tuesday noon the school reported 245 high school students absent. This was a jump of 30 from Monday's absenteeism list of 206. In addition to those out with the flu, John Duncan, another defensive tackle, was out with injuries sustained in the Mount Clemens game. Duncan lost two teeth, may lose a third and needed 15 stitches in his lip after he was accidentally kicked in the face.

An opponent's shoe had slipped past Duncan's bar face guard in a play.

HALFBACK Jeff Boucher, meanwhile, was back in the Birmingham lineup. He missed the Mount Clemens game because of the flu—one of the first cases to hit the Maple.

Some of those out now may be back by this weekend's game. They won't, however, be in top shape after missing several days of practice. It all points to a rough time for an undermanned Birmingham against the Lions from Ferndale.

Sports Calendar

Football
Friday
Ferndale at Birmingham, 8 p.m.
Southfield at VanDyke Lincoln, 8 p.m.
Saturday
Fitzgerald at Troy, 3:30 p.m.
Shady Side at Cranbrook, 2 p.m.

Cross Country
Thursday
Southfield-Waterford-Farmington, triangular, at Farmington, 4 p.m.

Friday
Birmingham, Royal Oak Dondoro, Berkley, triangular, at Birmingham, 4 p.m.

Tuesday
Detroit Thurston Invitational (Southfield entered), 4 p.m.
Soccer
Shady Side at Cranbrook, 10 a.m.

Reserve Football
Tuesday
Bloomfield Hills at Brighton, 7 p.m.
Royal Oak Kimball at Cranbrook, 4 p.m.

VanDyke Lincoln at Southfield, 4 p.m.
Freshman Football
Wednesday
Southfield at Troy, 4 p.m.

Junior High Football
Thursday
Troy at Fitzgerald, 7 p.m.
Cranbrook at Berkley Tyler, 4 p.m.

Little Football
Saturday
Tigers vs. Wolverines, High school, 9 a.m.
Browns vs. Spartans, Pierce, 9 a.m.

Southfield at Detroit Bulldogs, 1 p.m.
Royal Oak Yankees at Troy, 2 p.m.

CYO Football
Saturday
Holy Name at Centerline St. Clements, 2:30 p.m.

Mount Clemens St. Mary's at St. Hugo of the Hills, 4 p.m.
Thursday
Farmington Our Lady of Sorrows at St. Hugo of the Hills, 4 p.m.

Pham Youth Guard For Detroit CC

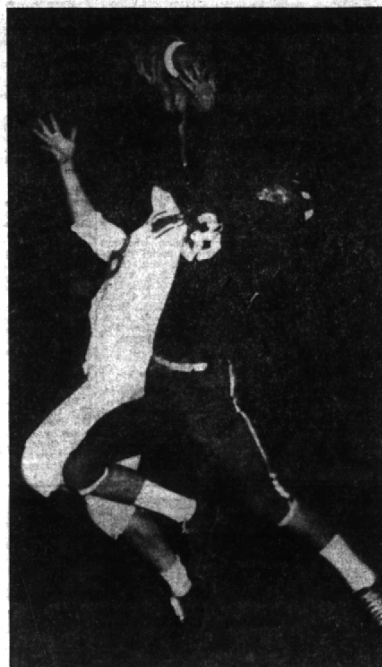
A Birmingham youth, Dave Bartush, 633 Shirley, will be a left guard for Detroit Catholic Central when Catholic meets Boyston Friday night at Briggs stadium in the annual Boys Bowl game.

This is the second season at the youth guard post for the 5-7, 152-pound local boy. He is the son of Mr. and Mrs. B. J. Bartush.

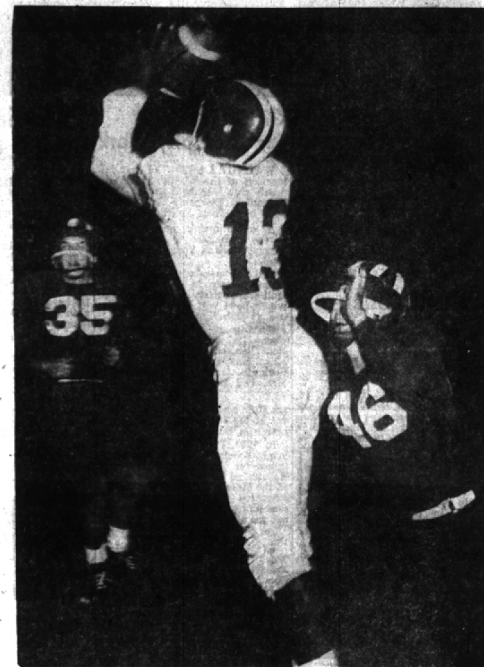
As Maples Edged Mt. Clemens . . .



Birmingham Fullback Chuck Gibson smashes through the Mount Clemens line for a five-yard gain in the Maples' 13-12 win over the Bathers Friday night at Mount Clemens. Tackler is Bather Linebacker Bill Shell (17).



Maple End Bob Stephenson (38) knocks down a pass from Mount Clemens' Dave Mial to Tom Dedenback, Bather quarterback. It was not intercepted.



Mount Clemens wingback, Herb Johnson (13), grabs a pass from Mial for a 30-yard gain in the second quarter. Rushing him are Dave Ritchie (35) and Sam Reeve (46).

—Photos Courtesy Mount Clemens Monitor-Leader

Ritchie's Passing Key to Maples Win in E-M Opener

Fumble Saves 13-12 Mt. Clemens Defeat

Special to The Eccentric
By MARV SIMONSON
Sports Editor
Mount Clemens Monitor-Leader

MOUNT CLEMENS—"We gave them too many opportunities."

That's the way Mount Clemens high school's head football coach, Bill Mowry, summed up the Maples' thrilling 13-12 win over the Bathers Friday.

Mowry had high praise for Birmingham high school's quarter-back, Dave Ritchie, who tossed two game-deciding passes. One of Ritchie's pitches went for a touchdown, and the other set up the Maples' final tally.

"Those two key passes really stung us, and we sure could have used an extra-point kicker," Mowry said, adding, "I know we would have taken them if we'd gotten a break or two."

It was Mount Clemens all the way on the ground. Jack Smoot and Dave Mial accounted for most of the 284 yards the Bathers picked up rushing. The Maples' backfield mustered 125 net yards, with Chuck Gibson and Ed Estes doing most of the ball carrying.

AFTER BATTLING to a scoreless deadlock at the end of the first half, Birmingham stormed out and after marching to the Bather 47, Ritchie uncorked a long one to Jim Seckrich, who romped into the end zone for the first score.

Enter booter the conversion. A pass interference penalty helped Mount Clemens set up its first touchdown in the third period. A Maple defender was charged with interfering with Herb Johnson, who was after a pass from Mial.

With the ball on the Maples' 19, Smoot slashed to the two on carries up the middle and then powered over for the second score. Smoot missed the conversion when Mial, holding for the kicker, dropped the ball.

THE BATHERS held the Maples in their own territory on three straight plays after the kickoff, but then Ritchie heaved another pass, this time to Phil Russell, who traveled to the Mount Clemens eight in a play that covered nearly 60 yards.

Gibson bulled to the six-inch mark on two plays and then Estes rammed over for the final Birmingham score.

The Bathers roared back and Smoot and Mial teamed up on lants and spinners to lug the ball to the Maple 37. Then Smoot, whom Birmingham coach Carl Lemle called "one of the finest fullbacks in the league," shaved the rest of the distance for the last touchdown of the game.

Smoot's attempted pass was wobbly and end Jim Martens missed it in dive at the goal line.

IN A heart-breaking finish for the Bathers, Smoot tore off 63 yards in three carries down to the Maple seven yard line. On third down, the 180-pound senior rammed to the two but fumbled the ball and the Bathers' rage against the clock was lost.

Lemle said, "There's no doubt

The Birmingham Eccentric
SPORTS
PAGE 6 OCTOBER 10, 1957

Cranes Make It Four Straight In Soccer

Blenheim collegiate of Blenheim, Ont., became Cranbrook's fourth straight soccer victim Saturday afternoon, bowing 2 to 1 on the Canadian school's field.

Blenheim scored first in the second quarter, Cranbrook came back with goals by Pete King and John Studebaker in the third period.

THE CRANE goalie, Mike Moyer, made 11 saves. Blenheim's goal tender stopped eight Cranbrook shots.

Cranbrook meets Shady Side academy of Pittsburgh Saturday morning at Cranbrook in the Cranes' first Interstate Prep conference game.

Mary Johns, 10-year-old member of the Star Line Starlettes, rolled a high one of 171. Her other scores were 144 and 114, giving her a 137 average. The fifth grader at Magnolia school had an average last year of 107. Her mother's average is 114.

B'ham Cross Country Win Skein at 17; Southfield Harriers Drop Two Meets

Birmingham high's undefeated cross country lads notched their 17th straight dual win last Friday, taking a 15-40 verdict at Mount Clemens.

A meet set for Tuesday here with East Detroit was cancelled at the visitors' request because of illness.

Southfield, meanwhile, dropped two duals, losing to Detroit Thurston, 26 to 30, last Thursday at Thubston and bowing to Walled Lake, 19 to 36, Tuesday at Southfield.

Birmingham had the first five runners across in the Mount Clemens meet. Lee Tout, Bob Benson,

Bill Landis and Rich Riley tied for first in 10:40. Phil Ingraham was fifth in 10:45. Sixth was Bather runner Bernard Crannon in 10:54.

THE MAPLE reserves took an 18-45 win over Mount Clemens. The Birmingham JV is unbeaten over the past four years and has won three straight Eastern Michigan league junior varsity harrier crowns.

Thurston's Larry Burns was first in Thursday's meet, finishing in 11:30. He was followed by Jerry Lieber of Southfield in 11:31, George Podolski of Thurston in 11:48, Don Karr of the Jays in

11:54 and Thurston's Ed Mitchell in 11:56.

Bill Hosley of Walled Lake was home first Tuesday. His time was 10:24. Lieber was second in 10:40. Six Walled Lake runners followed the Southfield harrier.

TWO TRIANGULARS feature Thursday and Friday action this week. Southfield, Waterford and Farmington collide at Farmington Thursday afternoon. Birmingham, Berkley and Royal Oak Dondoro meet at Birmingham Friday.

Southfield will run in the Detroit Thurston invitational at Thurston next Tuesday afternoon.

ANNOUNCING The GRAND OPENING of Our SKI DEPARTMENT

SKI and SPORT SHOP
Alpine

- ★ Ski equipment imports from all over the world
- ★ Complete children's and youth's selections
- ★ All famous makes
- ★ Largest sweater collection in the midwest
- ★ Prices from reasonable to ridiculous
- ★ Expert fitting—boots and all other equipment

LISTEN TO DETROIT'S FIRST RADIO PROGRAM BY SKIERS AND FOR SKIERS
"SKI TALK"
Wed. & Thurs.—Nov. - Dec. - Jan.
Thurs. Only in Oct. and Feb.
WJBK . . . 1500 ON YOUR DIAL
6:05 to 6:15 P.M.

1693 S. Woodward Ave./north of 14-mi. rd./Midwest 6-7474/Open Eves.

It's Huntin' Time!
DUCK SEASON OPENED OCT. 1 with exceptionally good hunting.
SMALL GAME SEASON OPENS OCT. 21 with a bright outlook.
We've a Complete Line of . . .
GUNS & AMMUNITION
"COMFY and WOODS & STREAM"
HUNTING CLOTHES
FOR MEN and WOMEN
DROP IN and BROWSE AROUND
The Sportsman
116 WOODWARD at MAPLE, BIRMINGHAM