

## RENT A NEW CAR

In Birmingham  
NEW CARS for your every need. A replacement car, a temporary car, a "2nd Car" for an hour, day, week, or month. Whenever you're without transportation, call for free local delivery.

### SAUNDERS SYSTEM

Branch Agency at  
Colonial Standard Service  
MI 6-5434  
Maple at Adams  
Pontiac-Birmingham-Royal Oak-Mt. Clemens

## NOW AT PAUL'S CUSTOM TAILORS

### TUXEDO RENTALS

213 E. MAPLE, BIRMINGHAM  
Phone MI 6-6474



**Magnificent Match!**  
FROM TOP...  
TO BOTTOM!

Ties and stretch socks that share the same handsome colors and smart design. Superba's famous tie of 100% Depron\* plus socks of Depron-Nylon... you can soil them, wash them, they never need pressing. A treat for yourself great for gifts. Pick out a couple \$4.00 of sets soon!

\*DeFont trademark for its polyester fiber

## PECK'S MEN'S WEAR

Open Every Friday 'Til 9

108 S. WOODWARD, BIRMINGHAM MI 4-7724

## Name Chiera As Apartment Agent

John Chiera Co., 750 S. Woodward, has been appointed exclusive rental agent for the new Buckingham Manor apartments under construction on Etowah road, three blocks north of Maple.

Designed by Bankes and Scheufel of Detroit, this 80 apartment development is located three blocks from the commuter station in Birmingham. Planned with the 10 buildings facing a landscaped mall, all parking is at the rear with additional parking and a large playground also provided on the grounds.

The apartments, with over 1100 square feet in each, are larger than the average home.

Each apartment will be air-conditioned and equipped with a built-in range, oven, refrigerator, and waste disposer. Two apartments will share a large separate basement area for laundry, storage, and recreation space.

The first units will be ready for occupancy about Jan. 15. Applications are being taken now, and, if the apartment has not been decorated, the tenant may personalize it with a choice of his own colors from the standard charts.

## Joins Accountants

Arthur C. Schartow, 1965 Villa Road, Birmingham, has joined the Detroit chapter, National Association of Accountants. Mr. Schartow is employed at the defense engineering plant of Chrysler Corp. as plant accountant.



Robert E. Anderson

## Ad Executive Helps Present New Cars

Robert E. Anderson, 1680 Hillwood drive, Bloomfield Hills, who is vice president and manager of the Batten, Barton, Durkine & Osborn, Inc., Detroit office, helped Chrysler's DeSoto division introduce its 1958 models recently. Anderson, who is the DeSoto ac-

# BUSINESS BRIEFS



Arthur S. Griswold

## Three Area Men Get Promotions

Three area men have been elected vice presidents of Detroit Edison Co. at a meeting of the company's board of directors.

The new vice presidents are Arthur S. Griswold, 5015 Post Valley road, Bloomfield Hills; Donald F. Kigar, 32786 Bingham Lane, Southfield township; and Sylvester F. Leahy, 500 Hupp road, Birmingham.

Griswold, all of whose present duties will be included in his expanded responsibility, has been industry assistant to Detroit Edison President Walker L. Clesler since 1962.

He started in the Central Heating Department of the company in 1922 following his graduation from Cornell University.

He has been active in electric utility industry organizations and for several years served as a government consultant on electric power to the foreign operations administration and its predecessor agencies.

Kigar has been manager of the company's union relations department since its inception in 1953. Before that time he held posts as manager of construction and assistant manager of purchases. He joined the company in 1948 after

Robert E. Anderson, 1680 Hillwood drive, Bloomfield Hills, who is vice president and manager of the Batten, Barton, Durkine & Osborn, Inc., Detroit office, helped Chrysler's DeSoto division introduce its 1958 models recently. Anderson, who is the DeSoto ac-



Donald F. Kigar

receiving an electrical engineering degree from Ohio Northern university.

LEAHY, who has served as manager of employee relations since 1963, will continue his re-



Sylvester F. Leahy

sponsibilities for the company's employee relations programs. He joined Edison's overhead lines department soon after receiving an electrical engineering degree from the University of Michigan in 1931.

## Certificates Granted to 16

Michigan State board of registration for architects, professional engineers and land surveyors granted certificates to 16 local area persons recently.

Receiving architectural certificates were Harold J. Begrow, William K. Cooper, Gene J. Festa, Clarence E. Noetzel, all of Birmingham, and Louis F. Pacheco, of Bloomfield Hills.

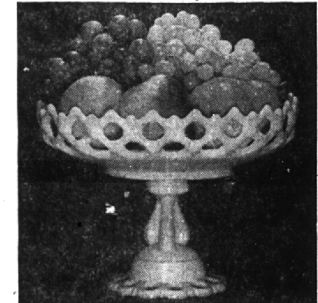
Newly registered engineers are Lynn H. Barber, Kenneth G. Check, Robert B. Cox, Robert T. Curcra, Donald L. Erhart, Joseph J. Funston, William T. Killean, Thomas F. Roth, Achilles C. Sampietro and Noel S. Walker, all of Birmingham.

John D. Albright, of Birmingham, received a land surveyor's certificate.

It takes a car traveling 15 mph on glare ice the same distance to stop as it does a car moving 50 mph on dry concrete.

## Westmoreland MILK GLASS

Make Lovely Gifts



Fruit bowl above \$7.50

A beautiful display including

- Candy boxes \$3.00 to \$12.00
- Cake Servers \$4.50 to \$10.00
- Sugar & Cream \$1.50 to \$6.50 pair
- Jugs \$1.50 to \$4.25

Candlesticks \$1.75 to \$5.95 ea.

## PONTIAC POTTERY

2099 S. Telegraph FE 2-8642  
Adjacent to North Side of Miracle Mile  
Open Daily and Sunday 10-8—Closed Thanksgiving

## QUALITY DRYCLEANING 4 HOUR SERVICE



- WOODWARD AT ADAMS ROAD
- W. MAPLE AT CRANBROOK ROAD

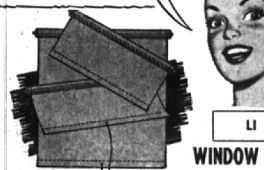
## REWEAVING

All Methods — Clothing & Sweaters  
We do our own work, (Precision Weavers)  
ALL WORK GUARANTEED

LI 1-8580 **F.J. Smith** Open Fri. until 9 P.M. Other days until 6  
CUSTOM TAILORS  
104 W. 4th St., Main Professional Bldg., Suite 204  
Royal Oak

## TO ADD BEAUTY TO YOUR HOME

With Smart, Pastel Window Shades



LI 1-4936

WINDOW SHADES  
\$189 TO \$395

Phone For  
**FREE PLANNING SERVICE**  
No charge for pick-up and delivery

VENETIAN BLINDS and SHADES  
CLEANED and REPAIRED

See Our Advertisement in the Yellow Pages for  
Drapes and Window Shades

## BESSENGER'S

23535 Woodward Ave. — Near 9 1/2 Mile Rd.  
Est. 1927 LI 1-4936

## GRUNDIG Majestic ultra-high fidelity music that lives



7015 W/3D

Debutante

AM-FM-SHORT WAVE

with 4-Speed Automatic Phonograph

### TECHNICAL SPECIFICATIONS

Tube Complement: ECC85, ECH81, EF80, EAB60, EL84, 6BM4/35, Eagle Eye\* tuning indicator and 1 selenium rectifier B250 C76N2.  
Watt Output: 8 watts.  
Circuits: 7 broadcast, 10 FM stages, 2 tunable.  
Loudspeakers: 3D system, (3 speakers) one permanent dynamic speaker, two electrostatic tweeters.  
Tuning Ranges: FM: 88-108 Mc.  
AM: 510-1620 kc.  
SW1: 510-15 Mc.  
SWII: 12.9-22 Mc.  
Tuning Dial: Illuminated, full vision indicator.  
Fine Tuning: "Eagle Eye" with hair-line accuracy.  
Connecting Jacks: Phonograph and external speaker.  
Tone Control: "Tone Control Key Board", 2 press buttons (Voice, Music), separate bass and treble boost controls, visual indication.  
FM Antenna: Built-in.  
Fidelity Enhancer: Built-in, to improve AM reception, (not reliable).  
Record Changer: 4-speed automatic, intermix, with featherweight tone arm, ceramic cartridge.  
Voltage: A.C., 60 cycles, 110 to 220 volts.  
Prices Start  
Dimensions: 39 1/2 x 30 x 15 1/2  
**\$279.95 & UP**

### LIMITED TRADE-IN

EASY TERMS — CHRISTMAS LAY-A-WAY

## MILKS APPLIANCES

OPEN EVENINGS

1493 S. WOODWARD MI 6-1300

## Our 1958 Christmas Club Is Open... Join Now

By joining our Christmas Club now and making regular deposits, you can be sure of having that extra cash you'll need for next year's holiday bills. There's a Christmas Club plan to fit every budget.

IF YOU WANT	Deposit Every Other Week
\$ 25 . . . . .	\$ 1.00
50 . . . . .	2.00
100 . . . . .	4.00
250 . . . . .	10.00
500 . . . . .	20.00

You can open your Christmas Club account at any MNB office, conveniently located throughout Detroit and the metropolitan area. Visit the office nearest you and open your account today.

## MANUFACTURERS NATIONAL BANK

DETROIT • DEARBORN • HIGHLAND PARK  
BLOOMFIELD • GROSSE POINTE WOODS • MELVINDALE • NORTHVILLE • PLEASANT RIDGE • REDFORD • SOUTHFIELD • WARREN  
MEMBER FEDERAL DEPOSIT INSURANCE CORPORATION