

Future Engineers Attend Conference

Among the 1,000 metropolitan Detroit school students who attended the engineering and science vocational guidance meeting last week in Detroit were Larry Butcher, 5115 Rochester road; Dan Dunagan, 870 E. Vanderpool; Wayne Figley, 3273 Helena, and James Halsey, 1109 Boyd street, all from the Birmingham area.

The conference, designed to "open up wide vistas of engineering and science available to students," is sponsored annually by the Engineering Society of Detroit.

BHS Debaters Win First Contest

By STEVE TAYLOR
The Birmingham high school debate team got off to a flying start last week when it defeated Birmingham's teams were victorious over Hazel Park.

The team debates today with Southfield at Southfield high school.

Thanksgiving Week Issue of The Birmingham Eccentric

Will be out a day earlier—
Wednesday, Nov. 27

So please have your copy for news and advertising in one day earlier than normal
We'll appreciate your assistance

Choir Plans Yule Musical Journey

By ANDRE GALLAUDET
And SUE SUNDBERG

BLOOMFIELD HILLS.—Friday night, Dec. 12, the music department of Bloomfield Hills high school will present its annual Christmas concert. The choir will take its audience on a musical journey through time, starting with modern carols and later turning back to some of the wonderful Christmas classics.

Between this span of time the band will create a festive spirit with some delightful holiday music. Highlighting the program will be the "Jills", and a boys' trio singing their interpretations of favorites.

Derby Honor Roll

Honor rolls listed 209 Derby junior high school students when released last week. Class totals of students making honors for the first marking period are: seventh grade, 98; eighth grade, 48, and ninth grade, 63.



From The School Press



Les Carter Derby Junior High School
Les Perrin Cranbrook
Andree Gallaudet Bloomfield Hills High
Sue Sundberg Bloomfield Hills High



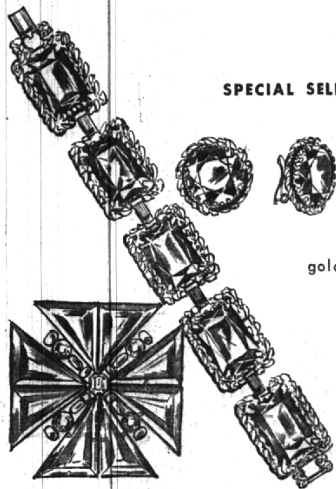
Judy Caddell Southfield High School
Julie Hoover Birmingham High
Steve Taylor Birmingham High
Kristine Gilmartin Kingswood

Kingswood Column

By Kristine Gilmartin
Thoughts of Thanksgiving and turkey and mince pie and home are making eyes shine at Kingswood these days, but a group of seniors is particularly excited about an earlier trip they will take the week end of Nov. 22, just before school closes.
They are the nine delegates to the second annual Lake Erie conference, to be held this year at Shady Side academy in Pittsburgh. Missy Kirk, Julianne Allen, Nancy Tregenza, Molly Marshall, Peggy Brandt, Ann Vanderzee, Diane Hamady, Barbara Hetrick, and Anne McFadden will be accompanied by Miss Nancy Kassarow. This is a religious conference and will consist of a student workshop on Saturday to discuss "the making and nature of personal decisions." After Sunday morning church service, the girls will again board the bus and bring back to the rest of the school the ideas and experience they have gained.

The curtain fell amid thundering applause on "Twelve Angry Women," the senior play presented Saturday. Judy MacPherson and Lynne Norvell were the principals, exchanging real as well as verbal blows.

Hockey sticks have been put away and the winter sports program has started. Mid-semester grades are out, and now everyone has settled down for the long winter's grind. Wear your mittens. Do your Christmas shopping early.



SPECIAL SELLING OF GIFTABLE JEWELRY 2.00

bold, handsome fashion highlights: pins, bracelets, earrings...richly hued glass gems in "antique gold" or "antique silver" settings. ruby, topaz, black diamond, emerald or sapphire.

Jewelry Street Level

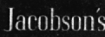


Maple at Bates Birmingham



warm dream of softness to curl up and purr in... a pink or blue rosebud-sprinkled duster in dacron nylon fleece, s, m, l. **22.98**

Lingerie Parking Level



Maple at Bates Birmingham

Store Hours Monday thru Saturday 9:30 A.M. Until 5:30 P.M.



two dyed-to-match parts blend into one perfect gift... our luxuriously soft sweaters of lambswool-angora angolura and the matching wool-fur or all-wool slim skirts. a. intarsia slipon, grey or fawn beige combinations. **14.98** wool-fur skirt, blush pink, fawn beige, dream blue, iris, maize, grey. **14.98** b. slipon, blush pink, dream blue, samoa green, iris, white, yellow. **12.98** tweed wool skirt, toffee, iris, pink combinations. **17.98** c. collared cardigan, blush pink, geranium, iris, pink, samoa green, dream blue, white. **12.98** all-wool plaid skirt, fawn beige, grey, samoa green or geranium combinations. **16.98** d. intarsia cardigan, fawn beige or grey combinations. **12.98** wool-fur skirt, geranium, toffee, dream blue, samoa green, pink, grey. **14.98** sweaters, 36 to 40. skirts, 8 to 18.



Maple at Bates Birmingham