

**COMMUNITY HOUSE  
CALENDAR**

**Thurs. Nov. 21**  
 6:30 p.m.—Business Womens dinner  
 7 p.m.—Recovery Group  
 7:30 p.m.—Explorer Scouts  
 8 p.m.—Bridge class  
 8 p.m.—Pounds-a-way club  
 8 p.m.—Painting class  
 8 p.m.—Photography class

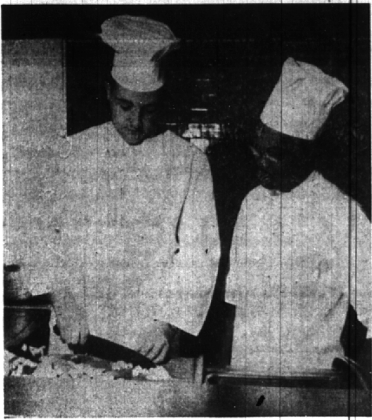
**Friday, Nov. 22**  
 9 a.m.—Silver class  
 10 a.m.—Senior Men's club  
 10 a.m.—Girl Scout Council  
 10:30 a.m.—Senior Workshop  
 1 p.m.—Bridge class  
 1 p.m.—Silver class  
 1 p.m.—Stepkowska class  
 5 p.m.—Mortensen class  
 7:45 p.m.—Brown Ballroom  
 9 p.m.—Coterie club dance

**Saturday, Nov. 23**  
 9:15 a.m.—Mortensen classes  
 10 a.m.—Children's painting class  
 11:15 a.m.—Brown Make-up class  
 7:30 p.m.—Horticulture Society Party

**Sunday, Nov. 24**  
 Alcoholics Anon. "Closed Meet."  
 9 a.m.—Sewing class  
 9:30 a.m.—Musical practice  
 10 a.m.—Musical Board meeting  
 10 a.m.—A.U.W. Children's Theater  
 10 a.m.—League of Women Voters Board Meeting  
 12:15 noon—Rotary lunch  
 3:30 p.m.—Girl Scout Troop 351  
 3:30 p.m.—Children's Painting Class  
 4 p.m.—Stepkowska classes  
 6:30 p.m.—Hi-12 dinner  
 8 p.m.—Flannel Parenthood meeting  
 8 p.m.—Cub Pack B-3 comm. meeting  
 8 p.m.—Stamp club  
 8:30 p.m.—Dancing class

**Tuesday, Nov. 26**  
 9:30 a.m.—Baldwin Scout Leaders  
 10 a.m.—International Relations class  
 10 a.m.—Senior Men's club  
 12:15 noon—Exchange club lunch  
 1 p.m.—Village Women's Bridge club  
 1:30 p.m.—Garden club  
 3:30 p.m.—Girl Scout Troop 216  
 4 p.m.—Mortensen classes  
 4:15 p.m.—Brown Ballroom  
 6:30 p.m.—Kiwanis club dinner  
 7 p.m.—Sewing class  
 7:30 p.m.—Vulture club  
 8 p.m.—Southfield-Bloomfield Assoc. meeting  
 8 p.m.—Birmingham Forum  
 8 p.m.—Painting class

**Wednesday, Nov. 27**  
 9 a.m.—Junior League Arts & Interests  
 9:30 a.m.—Junior League Chorus  
 10 a.m.—A.U.W. Theater  
 12:15 noon—Lions club lunch  
 1 p.m.—Interior Decorating class  
 3:15 p.m.—Stepkowska class  
 7 p.m.—Dale Carnegie class  
 7:30 p.m.—Design class  
 8 p.m.—Alcoholics Anon. "Open Meeting"  
 8 p.m.—Bridge class  
 8 p.m.—Bebekah meeting  
 8 p.m.—Council on Comm. Services meeting  
 8 p.m.—Junior League Arts & Interests



**Learns Food Use**

William H. Little (left), son of Mr. and Mrs. L. M. Little, 70 Devon, Bloomfield Hills, receives instruction in food preparation from William D. Stafford, instructor at Michigan State university's school of hotel, restaurant and institutional management. Students in this food production laboratory prepare food actually used for serving guests visiting MSU's Kellogg center.

**Can Dial More Than 1,200 Places From Birmingham**

Some 170 additional communities in a dozen states now can be dialed direct from Birmingham area telephones, Michigan Bell Telephone Company manager Albert H. Warner announced this week. The addition brings the number of communities Birmingham phone users can dial direct to more than 1,200 in 24 states. Two states—Indiana and Kansas—appear on the list of dialable points for the first time. Cities in those states include South Bend and Indianapolis in Indiana, and Dodge City, Wichita, and Topeka in Kansas. A total of 37 towns in the two states were added.

MORE THAN 50 Pennsylvania cities were added, among them Harrisburg, Hershey, and Scranton. Other large cities in the November 17 expansion include Kansas City and Joplin, Missouri, and Dayton and Springfield, Ohio.

**Reinburse Parents For Transportation**

Parents of handicapped children who transport them both ways to special classes will be reimbursed the full state transportation allowance matched by an equal amount from the Birmingham school district for the '57-'58 school year, according to the board of education at its Tuesday night meeting. If a portion of transportation is provided by parents, the amount they receive will be prorated. The state provides the cost of transportation up to 60 dollars. The board approved landscaping plans for Greenfield and Valley Woods schools and discussed dedication of Harlan school, tentatively set for May 13.

**Unseen Thief Loots Store Safe During Daytime**

Police again warned merchants to watch their back doors after the theft of \$143 from the rear of a Birmingham store Tuesday afternoon. Det. Lt. Meelis Holmquist said the thief was unnoticed when he entered a back door at Birmingham Office Supply, 645 E. Maple, while clerks worked at the front of the store. The culprit took a cash box containing \$120 from an open safe. He rifled a purse and took a wallet containing \$23. Holmquist said merchants should keep safes locked during the daytime, and warn clerks to put wallets and pocketbooks away.

**Blend Discipline With Freedom, Parents Advised**

ANN ARBOR — Children who are disciplined by their parents but enjoy high freedom of action outside the home are well-liked and industrial with their classmates. So says Robert S. Fox, director of the University of Michigan's University School. A specialist on educational guidance, Prof. Fox says, "But where discipline is accompanied by a low degree of freedom, children are not well liked and have relatively little sway over their classmates. They are also more often made the targets of physical force or other assertive behavior," he says.

THE EDUCATOR advocates having limits for youth is the home. "Teachers can tell when students always have their own way in the family circle," he says. "However, there is a need for youth to have the opportunity to express their own interests."

"Discipline is one means of dealing with the child when, in the parents' estimation, the child exceeds certain limits of appropriate behavior. Discipline may arouse hostility in the child along with a realization that it's a source of parental power." He stresses that the rules should be firm, but that a feeling of resentment never should accompany discipline. "Parents should create a home climate which lets their youngsters know that there is a firm set of rules they must follow," he said.

**XME Treasurer**

EAST LANSING — Muri Webster, son of Mr. and Mrs. J. B. Hildbrand, 481 Pleasant, Birmingham, has been named treasurer of Chi Mu Epsilon, national civil engineering, honorary at Michigan State university.



**Atomic Trainee**

FORT BENNING, GA. — A former local man, Private Lynn A. Benn, 19, whose parents, Mr. and Mrs. Louis Benn, reside at 1759 Webster, Birmingham, Mich., has recently been assigned to the 3d Infantry Division, Fort Benning, Ga., where he will undergo military training and accompany the "Marne" Division to Germany next spring. The Futonic Marine division, a new type Army combat force designed to fight and survive on the atomic battlefield, will assume North Atlantic Treaty Organization defense responsibilities in the American zone of Germany.

**WHY?**

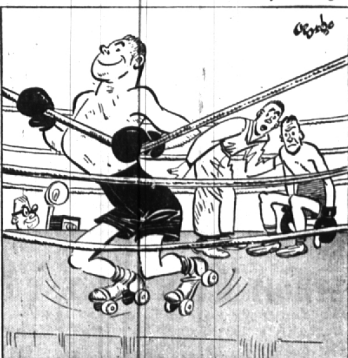


**Throw Old Shoes At Weddings?**

Throwing shoes after ceremony comes from rites in exchange of property in old countries where women were so regarded. Egyptian and Jew cast off sandals when making a sale to show seller had shed responsibility for property. In old Russia, girls removed shoes before bridegroom to indicate submission. Father of Anglo-Saxon bride delivered her shoe to groom, who touched her with it on forehead to betoken his authority. Shoe also symbolized hope for children—according to Old Woman who lived in one and had so many.

**Ticklers**

By George



"They say his footwork is terrific!"

**Cartoons by Adams To Be Displayed At Cranbrook**

CRANBROOK — "Adams and Anthropology, 34 large photographic blow-ups of cartoons by that grim artist, Charles Adams of the New Yorker magazine, go on view at Cranbrook Institute of Science Wednesday, Nov. 27, 2 to 5 p.m. (The Institute is closed on Thanksgiving day.) To augment the theme, various related objects from the museum collection will be displayed with the cartoons. Two extra public planetarium demonstrations are scheduled on Friday, Nov. 29 at 2:30 and 3:30 at the Institute.

This Christmas . . .

**SHOP IN NOVEMBER—RELAX IN DECEMBER**

Christmas already? For the WISE shopper definitely! Take a look at this year's calendar and you'll find that from Thanksgiving to Christmas this year there are only 22 Shopping days as compared to last year's 27. Five fewer days to get the same amount of shopping done. Can you imagine the crowds? (who can forget).

You'll find your local stores already have a majority of their Christmas merchandise in stock and within two weeks Christmas stocks will be at their peak.

This year, do your shopping in November and make December a month to relax and really enjoy the holidays.

SMART SHOPPING STARTS IN THE PAGES OF THE BIRMINGHAM ECCENTRIC

