

**Motoring Memo:  
How to Go on Ice and Snow**

How to go on ice and snow is a question that concerns most motorists in the 37 snow-belt states. The Committee on Winter Driving Hazards of the National Safety Council, which will conduct its 14th test program this winter in northern Wisconsin, has found that snow tires have a considerable advantage over conventional tires, and that in emergency conditions tire chains are the best self-help for the motorist.

The snow tire, which has a deep, bold tread, grips snow and slush-covered surfaces (but not ice) better than regular tires.

Tests of the committee also show that:

1. Specialized tires, while better than conventional tires, are not enough better to warrant less care in winter driving.

2. Tire chains are most effective under emergency conditions.

3. Regardless of what you use, take it easy, the committee warns. That's more important than tires or tire chains.

Wilson, Ingraham & Kavanagh, Attn., 199 Pierce, Birmingham

**STATE OF MICHIGAN**—The Probate Court for the County of Oakland.

At a session of said Court, held at the Probate Office in the City of Pontiac, in said County, on the 4th day of November, A. D. 1957.

Present, Honorable Arthur E. Moore, Judge of Probate.

In the Matter of the Estate of HAROLD M. STOCKWELL, Deceased.

Portia E. Stockwell having filed a petition praying that said instrument filed in said Court be admitted to Probate as the last will and testament of said deceased, and that administration of said estate be granted to the petitioner, the executor named in said Will, or to some other suitable person.

It is Ordered, That the 2nd day of December, A. D. 1957, is set aside, if the foregoing, in said Probate Office, is hereby appointed for hearing said petition.

It is Further Ordered, That public notice thereof be given by publication of a copy hereof, once each week, for three successive weeks, previous to said day of hearing, in the Birmingham Courier newspaper printed and circulated in said County, and that proposition contain a copy of this notice to be served personally or by registered mail, return receipt demanded, to each of the known heirs at law, legatees and devisees at their last known place of address at least ten days prior to said day of hearing.

ARTHUR E. MOORE, Judge of Probate.

Birthdays, anniversaries, guests, births, parties are all news—all the society editor about them.



**Views Scale Model**

Mrs. James Birnie, 730 Chester, Birmingham, chairman of the building plans committee of the Northwest branch of the Y.W.C.A. of Metropolitan Detroit sees a dream on its way to coming true as she views a scale model of the Northwest Y.W.C.A. building to be erected in Redford Township. Designed by Yamasaki, Leinweber and associates of Birmingham, the building will be a one-story structure of contemporary architecture. It will be the first of four Y.W.C.A. buildings to be constructed from funds allocated by the Metropolitan Detroit building fund. Among the other new Y.W.C.A.s to be erected will be a building located in South Oakland County to serve the women and girls of Birmingham, Royal Oak, Pleasant Ridge, Hazel Park and other surrounding communities.

**Troy Will Hold Special Election**

TROY — A petition seeking a special election to lower Troy's tax limit has been approved.

Oakland County Circuit Court Judge Frank L. Doty granted a writ of mandamus Nov. 7 to the Troy non-partisan property owners league.

The league had petitioned for the election. It wants the ceiling on Troy's operating taxes dropped from 15 to 5 mills. That is from \$15 for every \$1,000 of assessed valuation to \$5.

**Mothers Club Meet**

Phi Mu Mothers club of Detroit will meet at the home of Mrs. Sigurd O. Rue, secretary, 1772 Villa road, Birmingham, Nov. 16 for a tea. She will be assisted by Patricia Kelly, Shirley Stieben and Rosalie Rue.

The petition was signed by 2,100 persons.

No date for the special election has been set.

**Birmingham Man Joins Illinois Firm**

Leonard A. Pogue of Birmingham has joined Flexonics Corp., Maywood, Ill., as a sales engineer. He will make his headquarters at Flexonics' flex-o-tube division, Inkster, Mich., and will serve the firm's industrial accounts in the Michigan area.

The Pogues, with their two sons, Billy and Craig, and daughter Tracy, live at 6655 Indianwood Trail.

**Club Dresses Dolls**

Birmingham Woman's club department of modern living will meet today at the home of Betty

Bricker, 675 Ridgedale. Project for the day will be to dress dolls for Christmas. Serving refreshments will be Mrs. E. Wellman, Mrs. R. Clark and Mrs. A. King.

**BODINE'S**

IS OPEN

DAILY and SUNDAY 'til Christmas

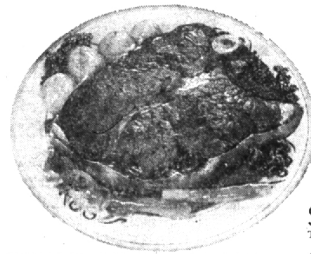
IMPRINTED CHRISTMAS CARDS

GIFT WRAPPINGS

TOYS

172 N. Woodward, Birmingham

MI 4-1177



Buy the brand that suits your budget best!

**Round Steaks**

U.S. Gov't graded, Choice Beef, Extra tender.

**79¢** Lb.

"Thrifty" meat from young range-fed cattle. Budget value.

**69¢** Lb.

Sirloin Steak Lb. 99¢  
Tender, U.S. Gov't Graded Choice

Ground Beef Lb. 43¢  
Lean, ground fresh daily

Chuck Roast Lb. 47¢  
Lean "Thrifty" blade cut

Beef Liver Lb. 39¢  
From young, tender beef

PLUMP AND TENDER, FRESH, WHOLE

**Stewing Chicken** Lb. 35¢

Polish Sausage Lb. 53¢  
Old country flavor

Sliced Bologna Lb. 49¢  
Hygrade's, fine for lunches

Hot Dogs Lb. 53¢  
Greenfield's skinnies, all meat

Pork SAUSAGE 3 Lb. Roll 99¢  
Hygrade's or Greenfield's



**BANQUET Pot Pies**

NO FUSS, NO MUSS — Your choice of Beef, Chicken or Turkey. Quick-frozen to insure freshness.

**5 for \$1**

**EATMORE Margarine**

FINE FOR TOAST OR FOR BAKING — Buy plenty at this low Kroger price — save!

**5 1-Lb. Pkgs. \$1**



Cake Mixes 3 1-Lb. Pkgs. 89¢  
Pillsbury assorted flavors

Frosting Mix 12-Oz. Pkg. 35¢  
Pillsbury Creamy Fudge

Cookies 1-Lb. Bag 39¢  
Kroger assorted varieties

Kroger SHORTENING 3 Lb. Cans 83¢  
Pure all vegetable

Ice Cream 1/2-Gal. Ctn. 69¢  
Country Club by Miller's Dairy

Spotlight COFFEE 3 Lb. Bag \$2<sup>13</sup>/<sub>100</sub>  
Buy the large bag — save

Cup-O-Cheer 1-Lb. Can 79¢  
Vacuum packed coffee

Instant Coffee 6-Oz. Jar 97¢  
Spotlight with Flavoroma

White Bread 2 20-Oz. Loaves 37¢  
Fresh Kroger sliced



STOKELY SALE—STOCK UP YOUR PANTRY!

- Cut Green Beans
- Cut Wax Beans
- Tomatoes

Mix 'em or Match 'em—Your Choice!

**2 303 Cans 39¢**

PACKER'S LABEL, FREESTONE

**Peach Halves**

Buy plenty at this low Kroger price.

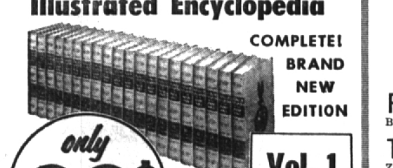
**3 2 1/2 Cans 79¢**



**Top Value Stamps**

Redeem your filled saver's books now. Get Free Christmas Gifts with Top Value Stamps from Kroger.

**NEW DELUXE 20-VOLUME Illustrated Encyclopedia**



COMPLETE! BRAND NEW EDITION

only **99¢** per volume. BRAND NEW! UP-TO-DATE! **Vol. 1 29¢**

ON OUR CONVENIENT BOOK-A-WEEK PLAN

CRISP, GARDEN-FRESH, JUMBO SIZE

**HEAD Lettuce**

Firm, solid heads. Fine for sandwiches or salads.

**2 for 29¢**

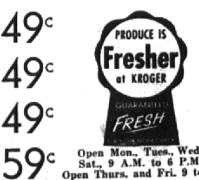


Florida Corn 6 For 49¢  
Big, golden kernels

Tangerines 49¢  
Zipper Skinned, 150 size

Jonathan Apples 4 Lb. Bag 49¢  
Crisp, fine for lunches

Idaho Potatoes 10 Lb. Bag 59¢  
U. S. No. 1, good keepers



Open Mon., Tues., Wed. Sat., 9 A.M. to 6 P.M. Open Thurs. and Fri. 9 to 9

**Get Top Value Stamps Plus Low, Low, Low Prices at Kroger!**

We reserve the right to limit quantities. Prices effective through Sunday, Nov. 17, 1957.

**Country Garden**

This Stangl pattern has gathered together a galaxy of flowers that bring your garden into your home. Beautiful new shapes will make your table most attractive. Colors permanently protected against fading or washing off. 16-piece starter set and open stock.

16 piece set— Service for four

**\$14.95**

**PONTIAC POTTERY**

2099 S. Telegraph

(Adjacent to North Side of Miracle Mile)

Open Daily and Sunday 10-6  
FE 2-8642

**PRIME MEAT**

Fancy Cuts—Prepared to Your Liking  
ALSO  
Complete Food Service  
All Kinds of Baskets

**OLSEN'S MARKET**

AMPLE PARKING  
WE DELIVER  
MI 4-1916  
West Brown at Chester  
Birmingham

**1958 EDSEL 6 PASSENGER 2-DR. SEDAN**

Includes:

- 3-3 H.P. 8 Cyl. Engine
- 4 Barrel Carburetor
- Oil Filter
- Turn Signals
- Air Foam Cushion
- Windshield Washers
- Positive Action Wipers
- Anti-Freeze

**\$2349<sup>90</sup>**

\*This 3% Merch. Sales Tax and License

**Jerry Robinson**

**EDSEL SALES INC.**

408 S. WOODWARD — Midwest 6-8700 — Jordan 6-1556 — BIRMINGHAM