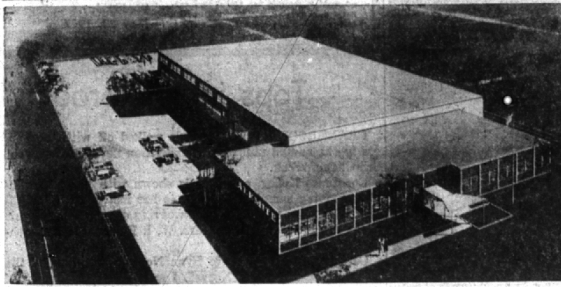


Career Placement Service Opens In Leon Building

Brady, McCrillis and Associates are serving the Birmingham area in a career planning and placement capacity since opening offices recently in the Leon building at 288 E. Brown, Birmingham. Management of the new firm

has extensive experience in the personnel field and is familiar with industrial sales and product manufacturing and offers employers within the area prompt efficient service in locating personnel suited to company requirements. Managers Vera Brady and Kathryn S. McCrillis, familiar with the problems of employer requirements, also welcome the graduating high school student interested in finding job and career placement within the Detroit area.

BUSINESS BRIEFS



ALEMITE COMPANY OF MICHIGAN'S new office and warehouse will open its doors Monday, June 3, at 950 Maple road, Troy township. Alemite is a distributor for the Alemite division of Stuart-Warner corporation in Chicago, producers of lubrication equipment and products.

Alemite To Open New Offices Here

Modern offices of Alemite company's new building on Maple road, Troy township, will be open for business Monday, according to Frank H. Dredweg, office manager for the Alemite company.

Thomas B. Anderson, 1241 Club drive, Bloomfield Hills, who has operated the Alemite Company in Detroit for some 35-odd years, is a 20-year resident of Bloomfield Hills.

He has been an eye-witness to the residential growth of the city and to the new industrial frontier of Greater Detroit into which Alemite company is moving.

Groce, Gilmartin Advanced at Hyatt

Appointment of Lester L. Groce as sales manager of the Detroit zone office since 1956. A graduate of University of Michigan, Gilmartin joined the Hyatt organization in 1934 as a draftsman. His experience at Hyatt includes production scheduling and sales engineering. He has been sales engineer in the Hyatt Detroit sales office since 1945.

Groce is a graduate of the University of Texas with a Bachelor of Science degree in mechanical engineering. Since joining Hyatt in 1944, he has held various positions in the sales division including those of junior sales engineer and sales engineer. He has served

Credit Union Creates Foundation

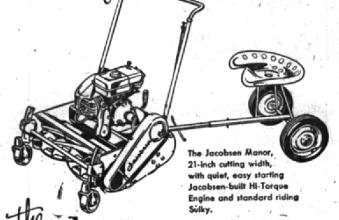
A new non-profit organization, known as the Michigan Credit Union Foundation, organized for charitable and educational purposes, has been incorporated in Michigan to honor those men and women who have made singular contributions to the credit union movement, with Robert W. Peden, director of accounting at Wayne State University, as president. He lives at 1462 Pierce, Birmingham.

The foundation is the outgrowth of the dedicated life of the late J. Clarence Howell, pioneer treasurer-manager of the Detroit Teachers Credit Union, and a desire by his co-workers, associates, and friends, to perpetuate the work he had begun.

IT OFFERS subscribers and contributors a way of helping people to help themselves by fostering economic advancement. Contributions may be made in the form of gifts, grants, legacies, donations, and bequests of property in any form whatsoever, real, personal, or mixed. The funds of the foundation are to be used to provide scholarships, to support special educational activities, to contribute books to schools and public and professional libraries, to finance research projects and the writing and publication of books for the extension of credit union services to other parts of the world.



For the finest lawn grooming



the **JACOBSEN MANOR**

Only a reel type mower can give you the feeling of complete satisfaction that goes with a beautiful lawn. And for the finest in reel type mowers you can't beat the Jacobsen Manors. Rear wheel drive lets you get up close for trimming around flower beds or under overhanging shrubbery. Riding sulky can be attached for extra comfort and faster moving.

Call Today for free demonstration on your own lawn. Generous trade-in allowance, convenient terms or lay-away plan.

JACOBSEN MOWERS starts at \$69.50 & up as advertised in LIFE and POST

MANUS SALES SERVICE HARPENING LI 9-2440 3116 N. Woodward, Royal Oak Between 12 & 13 Mile Road

QUALITY DRYCLEANING 4 HOUR SERVICE

Birmingham DRIVE-IN CLEANERS

- WOODWARD AT ADAMS RD.
 - WEST MAPLE AT CRANBROOK RD.
- WE GIVE S & H GREEN STAMPS

Booklets ---- ? YES... WE PRINT HUNDREDS OF BOOKLETS — EITHER LETTERPRESS OR OFFSET

Three Detroit Salesmen . . . TR 5-2629 . . . Plant MI 6-2000

The **AVERILL PRESS INC.** of Birmingham A COMPLETE PRINTING SERVICE—FROM TYPESETTING TO MAILING

FORMERLY THE BIRMINGHAM ECCENTRIC PRINTING DEPARTMENT

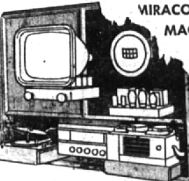
McCallum & Dean THE ULTIMATE IN HI-FIDELITY EQUIPMENT

"A Vast New World of Listening Pleasure Awaits You."



Midwest 4-5230

Visit our Hi-Fidelity Music Demonstration Room



- AMPEX
- BELL
- FISHER
- GARRARD
- SCOTT
- REK-O-CUT
- ELECTRO-VOICE
- HARMON
- KARDON
- RIVER EDGE
- ACOUSTI-CRAFT
- MIRACORD
- MAGNAVOX
- PILOT
- PRESTO
- TURNER
- V-M
- G-E

409-411 East Maple

Birmingham

Kawamoto Studio Picks W. P. Curry As Sales Manager

George E. Kawamoto Studio today announced the appointment of W. "Peter" Curry, 647 Woodland, Birmingham, as associate and sales manager, to handle the expansion of client services.

The studio majors in commercial advertising in the advertising trade field.

Curry has had broad experience in sales administration, has been insurance special agent, sales representative for an automotive fabric mill, and more recently, sales manager of a local manufacturing concern.

Appoint Fruehauf Product Sales Mgr.

Appointment of Paul N. Erickson, 2660 Middlebury lane as product sales manager on Haulaway Trailers, Fruehauf Trailer company, has been announced by Fred S. Neumann, sales vice president. Erickson has been with Fruehauf since 1953 when he joined the company as a project engineer in the research and development group. March, 1956, he took charge of all engineering for a complete new line of Fruehauf Haulaway Trailers—vehicles used to haul new autos.

PROFESSIONAL RUG CLEANING Your KEY to Longer-Wearing, Lovelier Rugs... **Leader Carpet Cleaning Co.** 8700 LINWOOD TY 5-8400

Extra Banking Hours

Our Bloomfield Hills Office is open Mondays — Tuesdays and Thursdays from 10 to 3 Wednesdays 10 to 12 Noon . . . Fridays 10 to 8 and Saturdays 9 to 12 Noon Enjoy these extra hours for Modern banking — Park and bank with Community where Thousands Save Millions



Community National Bank OF PONTIAC

Bloomfield Hills Office West Long Lake Near Woodward Ave. Member F.D.I.C.

Branch Offices at W. Huron at Tilden — N. Ferry at Glenwood — Keger Harbor — Valley Lake — Union Lake — Milford and Bloomfield Hills.

Have you tried Marathon's **NEW DOUBLE-BARRELED BONUS? TWO ADVANCED NEW GASOLINES!**

New MARATHON SUPER-M Highest octane in Marathon history for full power performance in highest compression engines! (Up to and including 10 to 1 compression ratios.) Specially refined for quicker starting, faster pickup and power, power, power! IT'S TOMORROW'S GASOLINE TODAY!

New MARATHON MILE-maker Extra power for extra miles at regular price! Gives premium performance in all cars with standard-compression engines. Due to high-concentrate refining, MILE-maker produces more "mile-making" energy units than ordinary gasolines.

There is one reason these are the finest gasolines in all Marathon history. It is our philosophy of gasoline refining. Briefly, this is it: We apply each of the 105 steps in the complex refining process with but one object in mind—to provide in greatest possible measure that which you, the motorist, want in a gasoline—mileage, power and performance. Nothing known to the petroleum industry has been overlooked in providing you with the two finest gasolines we have ever produced—one of which is the very best fuel you can buy for your car. Drive in to your Marathon dealer today and let your car decide!

DRIVE ON AND ON WITH MARATHON "BEST IN THE LONG RUN" Copyright, 1957—The Ohio Oil Company