

The Birmingham Eccentric

Garden Tours Set for June

The Detroit Garden Center Pilgrimage has planned four weekend tours for the month of June, starting with the Gross Pointe tour, June 8 and 9, followed by Birmingham and Bloomfield Hills on June 15 and 16. Other tours will run through the last week-end in June.

The loveliest gardens in each area have been selected and the emphasis this year is being placed on horticulture and general landscaping problems.

WITH this in mind Mrs. Frank Webb, the Center's Horticulture chairman is planning to have an "expert" in each garden to answer questions pertaining to plant material. Also—in one garden on each

tour, a landscape architect "consultant" will give further assistance with landscape design.

On every weekend for added interests there will be flower arrangements for terrace and patio and on two of the tours, one of the homes will be open for the display of arrangements. Tea . . . or iced punch if the weather is warm . . . will be served each weekend in one of the gardens.

residence of Mr. and Mrs. Clifford Baugh overlooking River Rouge where contemporary arrangements will be displayed.

This tour features several rose gardens as well as contemporary plantings using masses of floribunda roses. The spacious country garden of Mr. and Mrs. Irving A. Duffy will feature a riding arena—and horses, and tea will be served there on Saturday.

ANOTHER large estate is the French provincial home of Mr. and Mrs. Theodore Yatzema on Lower Long Lake road and in contrast is the contemporary home and garden of Mr. and Mrs. George Goodwin also on Lower Long Lake. Tea will be served Saturday on the terrace of Mr. and Mrs. C. E. Nickel on Westchester Way in Birmingham.

IN BIRMINGHAM on June 15 and 16, visitors are invited to open house at the contemporary

WILPF Call On President In Resolutions

At its annual meeting at the Birmingham Community House last Saturday, the Michigan Branch of the Women's International League for Peace and Freedom called upon Pres. Eisenhower in resolutions to use his influence toward the passage of his own Civil Rights proposal, and to make a public address on civil rights during the National Prayer Pilgrimage, May 17-18.

The League also urged the President to have the United States lead the nations of the world in abolishing nuclear tests which threaten the world with self-destruction.

Feeling that foreign economic aid is a real war-prevention measure, the League then urged that the President recommend to Congress the appropriation of a billion dollars for such agencies as UNICEF, SUNFED, for technical assistance, refugees, exchange of students and famine relief.

OAKLAND County Branch of WILPF was hostess for this annual meeting, and its president, Mrs. Robert Applegate, reported two resolutions which were directed to Michigan State officials; one, a letter to Sen. Basil Brown commending him for his bills to eliminate discrimination in public housing and regretting that these bills died in committee.

The second was sent to the sponsors of current censorship bills, disapproving censorship by law as being unconstitutional and undemocratic. Copies of these resolutions were also sent to the Governor.

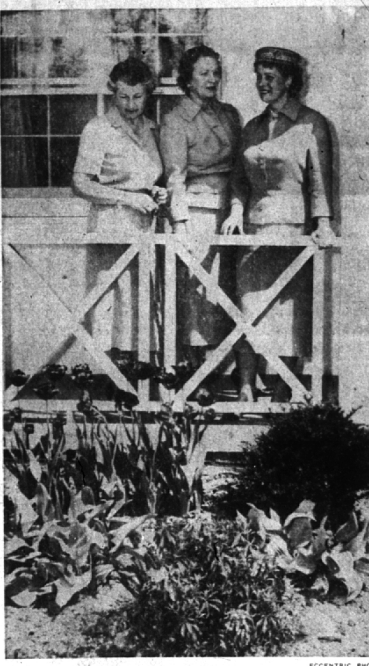
A final resolution directed to the President asked him to press for basic changes in the present Walter-McCarran Immigration Act, changes that he himself has proposed, allowing more equitable distribution of immigration quotas, and that pending the passage of such revision, an emergency Refugee Relief Act be passed to allow the U. S. admit its fair share of refugees.

Still Accepting Tag Day Donations

Due to the cold, rainy weather many Birmingham families did not come to town and meet the MOMS and buy a tag. Persons desiring to help in the work can still send contributions to Mrs. Herbert Gardner, 172 Aspen road, Birmingham, treasurer of the unit.

An invitation to join unit 3 of the MOMS of America is extended to any mother whose son or daughter is serving or has served in the Armed Forces. Accepting calls will be Mrs. John Walrath, 500 Bloomfield court.

Ancient Marcus Aurelius used to wonder why every man loves himself more than others, yet too often sets less value on his own opinion of himself than on the opinions of others of himself. After all, one really should respect himself highly.



TOUR AREA CHAIRMEN have been busy these past weeks entertaining garden club presidents and distributing Pilgrimage Tour books. Mrs. Marvin Katke of Kirkway, assisted by Mrs. Howard Flint and Mrs. James I. Ford, entertained the Birmingham-Bloomfield Hills presidents at a coffee hour at the former's home Thursday morning. Looking over her flower garden is the hostess, Mrs. Katke (left), with Mrs. Ford (center) and Mrs. F. Gordon Davis.

Hey Kids! EXCITING NEW
Walt Disney's
CINDERELLA
COSTUME PLAY BAGS

All you do is cut out and head holes on the dotted lines and you are ready to play. The first series is from Walt Disney's Cinderella, coming to your favorite theatre.

Now given FREE with Sanitone Dry Cleaning

DAVID J. UNDERDOWN'S
DOUGLAS
CLEANING CO.

534 S. Woodward — MI 4-1507 — Birmingham

The Old Plantation Bell Is Back



Ideal for the home, farm, cottage, cabin, office, rumpus room, outside fireplace, or on the steeple of your breezeway.

Limited quantities of the "Old Dinner Bell" have been manufactured recently by the foundry that made them 100 years ago. Add a touch of the "Charm of the Old South" to your place. Attaching brackets can be mounted in several different ways so you can place your bell wherever you choose. Made of heavy cast iron—yet has a beautifully clear tone.

BLACK WROUGHT IRON
6" DIAMETER
\$7.95

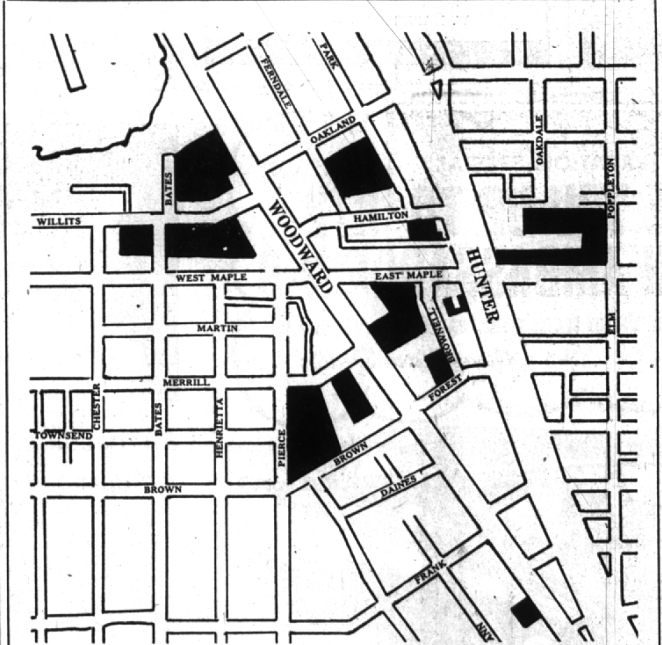
BLACK WROUGHT IRON
16" DIAMETER
\$44.95

McBRIDE
HARDWARE COMPANY

154 S. Woodward, Birmingham MI 4-3010

Open Daily to 6, Friday to 9:00

Shopping Is Convenient In Birmingham



On the map above are indicated the offstreet parking facilities in Birmingham. They include municipal as well as privately-owned lots. All are open to the public. In addition to offstreet parking, 900 metered spaces are available on the streets in the downtown area.

The most recently opened lot is the municipal lot located between Hamilton and Oakland. Featuring many all-day meters among its 177 parking spaces, it's a sure bet for quick parking any day of the week, and it's only 2 minutes from Woodward and Maple.

Another municipal lot is located at Pierce and Brown streets. Two other municipal lots are now under construction. One is located at Forest & Brownell and the other on Hamilton just west of Hunter Blvd. both will open this year. Every store in Birmingham is within a minutes' walk from one of the many lots. Shop in Birmingham. It's Convenient!

Where There Is Always Plenty of Parking

Now, added to the wonderfully varied shopping facilities in Birmingham is added a convenience you may never have dreamed existed. Parking facilities for over 4000 cars.

An offstreet parking development program backed by the Birmingham retail merchants and the Chamber of Commerce has accounted for the rapid increase in parking facilities in Birmingham, facilities that mean SHOPPING CONVENIENCE FOR YOU.

Birmingham is adding more than parking to its repertoire of shopper facilities. Last year 76 new and remodeled stores offered the latest in redesigned quarters. You'll find every type of store in Birmingham and products in every price range.

SHOP CONVENIENTLY — SHOP IN LUXURY — SHOP IN BIRMINGHAM YOU'LL ENJOY IT!

SPONSORED BY THE FOLLOWING RETAIL MERCHANTS

- | | | | | |
|--|---|--|---|--|
| <p>North Woodward, West Side</p> <p>Wilson Drug Co. Gregory, Mayer & Thom Co. Eggleston's Huston Hardware Co. F. J. Mulholland Co. Herbert Burr Shoes Peter Pan Restaurants Inc.</p> <p>South Woodward, West Side</p> <p>Lala's Jewelers The Sportsman</p> | <p>Martini's Restaurant The McBride Hardware Co. A & P Food Store</p> <p>North Woodward, East Side</p> <p>Miller's Shoes Birmingham Fruit & Grocery Co. Birmingham Hardware Hawthorne Electrical Co. Bodie's The Detroit Bank & Trust Co. The Birmingham Eccentric Warfield Paint Co.</p> | <p>South Woodward, East Side</p> <p>Grinnell Bros. Davidson's Women's Apparel Haniel "t" Gretel Benjamin & Stephens, Inc.</p> <p>East Maple, North Side</p> <p>Kincaid's Jewelers McCallum & Dean</p> <p>East Maple, South Side</p> <p>George Ross Jewelers</p> | <p>West Maple, North Side</p> <p>Danby's Ray Baum Shop Himelbochs Sire Brothers Kay Cooley Inc. Higgins & Frank Dickinson's Men's Shop Jacobsons</p> <p>West Maple, South Side</p> <p>Birmingham Federal Savings & Loan Assn Shain's Rexall Drugs Williams Boot Shop Martimer's Men's Wear LaBelles</p> | <p>Bahn's Curtains S. S. Kresge Co. Modern Beauty Salon</p> <p>Pierce Street</p> <p>McCoy Tailors Inc. Young's of Birmingham Lewis Furniture Corp. Princeton Prep Shop The Wine Shop McSweeney's Fine Footwear</p> <p>Hamilton</p> <p>League Shop</p> |
|--|---|--|---|--|