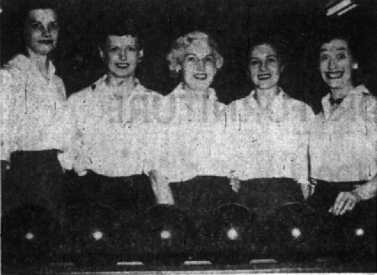




WHITMER REAL ESTATE made a fair showing at Dayton during their competition in the national bowling congress. They are (left to right) Mary Hamilton (captain), Valma Nyberg, Margaret Williams, Dorothy Sundstrom and Irene Parkens.



ROSEMOND HILLS team from Bloomfield Lanes will be making a weekend of it in Dayton, Ohio. They are (left to right) Martha Bemis, Betty Sadlak, Trudy Middlemas, Sylvia Morningstar (captain) and Mary Walton.



BIRMINGHAM ECCENTRIC will leave May 18 to compete in the Women's International Bowling Congress. Team members are (left to right) Dorothy Foreaker (captain), Mabel Smith, Charlotte Mason, Mildred Tolland and Maxine Foltz.

Three Area Teams Compete in WIBC Nat'l Tournament

Three local teams are competing in the Women's International Bowling Congress in Dayton, Ohio. Whitmer Real Estate has already made the trip, putting in a fair performance. Rosemond Hills and Birmingham Eccentric will go together to participate on May 19 in the national tournament.

Paulus Wins TV Set

Joseph W. Paulus, 1111 W. Gentry, Bloomfield township, owner of Bloomfield Lanes bowling alley and publisher of Detroit's Modern Bowler magazine, won a portable television set for placing second in the editorial division in the fourth annual ABG Bowling Magazine contest. He received the award at the annual American Bowling Congress Press party in Fort Worth, Tex.

Golfing Fees Rise At Springdale Park

Golfing fees will go up at Birmingham's Springdale Park course. It was decided at the Birmingham city commission meeting Monday. In the past, a charge of \$1 for golfing all day on weekdays and \$1.50 for all day Saturdays, Sun-

days and holidays has been in effect. Now there will be a 50 cent fee for each additional round on both weekdays and Saturdays, Sundays and holidays. This would not, of course, affect the standing season membership charge of \$25 the after 6 p.m. golfing charge of 50 cents or the specially designated hours for junior golfing, with a charge of 35 cents.

PASQUALE'S RESTAURANT

PIZZERIA

Real Italian Pizza Cooked to Your Order

Like Pizza with cheese? With spicy Italian sausage? We make it the way you like it. Many other American and Italian specialties. Come in! Make it soon!

OUR SPECIALTY — FULL COURSE DINNERS

Now Serving: Barbecued Chicken Barbecued Ribs

Carry Out Service LI 9-4002

3808 N. WOODWARD 3 Blks. North of 13 Mile Road

MSU Varsity to Tackle Old Timers in Grid Duel

EAST LANSING, Mich.—Many athletes familiar to Birmingham area fans will be in action when a dream team of former Michigan State football stars battle with the current Spartan varsity Saturday, May 4, at Macklin Stadium. The occasion is the First Annual Old Timers Classic, an affair which may prove to be one of the greatest crowd-pleasing spectacles in State's gridiron history. One thing is sure. For the first time in the 60 years the rugged American game has been played at East Lansing, the varsity won't be the sentimental favorite.

INCLUDED in more than 50 alumni players that will take part in the battle against the 1957 Spartan varsity are these players — Ralph Wenger, 1482 Washington, Birmingham; Bud Crane, Chuck Frank, Jim Hinesy, Marty Kelly, Gary Lowe, Norm Masters, Gerald Musetti and Ed Bagdon. They will join such other luminaries as Lynn Chandinos, Bob Carey, Don Coleman, Al Dorow, George Gunders, Jim Ellis, Bill Hughes and LeRoy Crane.

All seats for the game will be general admission at \$1, with the exception of a 50 cent price for Michigan college, high school and grade school students. Tickets may be obtained at the Varsity Shop in Birmingham.

SAVE ON LITTLE LEAGUE BASEBALL EQUIPMENT

- Large Pro Model Size
- Selected Tan Leather
- Soft and Flexible
- Pre-formed deep pocket
- Laced heel
- Adjustable lace fingers
- Full leather lined.

BATS
Official Little League Wilson or Louisville Slugger
Reg. 2.50, Now 1.89

UNIFORMS
Flannel, gray, white, with contrasting trim, adjustable waistband.
reg. 8.50—NOW 6.95

Baseball Socks 89c

Baseball Caps 88c
all wool—deep crown Reg. 1.25

FIBRE HEAD PROTECTOR 3.98

Official Little League BASEBALLS NOW 1.69

SPECIAL DISCOUNTS on TEAM PURCHASES
We Give Holden's Red Stamps in R.O., Gold Bell Stamps in Ferndale

SURPLUS OUTLET

Royal Oak Store: 124 W. Fourth Corner Center, City Parking Lot
Open Thurs., Fri. Sat. 9 p.m.

Ferndale Store: 2280 Woodward Corner 9 Mi. Ferndale LI 1-8840

Want Ads cannot be accepted after 5 p.m. each Tuesday

BOWLING SCORES

LADIES ALIBI

Team	W	L
B/W Controller	86 1/2	4 1/2
Bham Office Sup.	79	5 1/2
Value Dance Sis.	78 1/2	5 1/2
The Recreiter	77 1/2	5 1/2
Rosemond Hills	77 1/2	5 1/2
Princeton Prep.	76 1/2	5 1/2
Chick's Contract	76 1/2	5 1/2
Manus Diet.	76 1/2	5 1/2
Avia's	76 1/2	5 1/2
Whitmer Real Est.	76 1/2	5 1/2
Pete Frank	76 1/2	5 1/2
Casa Mia	76 1/2	5 1/2
Next Bank	76 1/2	5 1/2
Vashinger Ind.	76 1/2	5 1/2
Mars Drive-In	76 1/2	5 1/2

HOLK NAME LADIES

Team	W	L
Mars Drive-In	83 1/2	4 1/2

B'ham Babe Ruth Has Last Tryout

Birmingham's Babe Ruth baseball league will have one more practice before the player-auction takes place Monday. The practice tryout will be held at St. James Field, located between Edgewood and Grant streets of Lincoln.

Fourteen and 15-year olds are scheduled for 9 a.m. and 13 year olds are to begin practice at 1 p.m.

The Birmingham Babe Ruth Major League will consist of six teams of 15 boys each. Those who fail to make the majors will be able to play in the Birmingham junior baseball league. There are 175 boys trying out.

B'HAM ECCENTRIC Page 7-E
Thursday, May 2, 1957

Baseball was originated in Springfield, Mass., in 1839.

GOLF - GOLF - GOLF
DRY
Always Playable
MOREY'S
Golf and Country Club
Union Lake Road
Off Commerce Road
Bob Young—P.G.A. Pro

sweet (just look)

smooth (ah, that velvety V8)

sassy (just drive it)

This is the car that's fresher and friskier from its own special look to the way it takes to the road.

Those words—sweet, smooth and sassy—seem to fit this new Chevy right down to its tubeless tires. In the first place, it looks the part. It has a crisp, alert appearance—as trim and functional as an arrow. You can tell that the styling isn't just going along for the ride.

But the real clincher is the sweet and solid way Chevy takes to the road. Horsepower options, you know, range up to 245*. Come take the wheel!

CHEVROLET
USA
ST. CHEVROLET

*270-h.p. high-performance V8 engine also available at extra cost.

The Bel Air Convertible (above). The Chevrolet Corvete (at right).

Only franchised Chevrolet dealers **CHEVROLET** display this famous trademark

NORTH CHEVROLET

1000 S. WOODWARD BIRMINGHAM MI 4-2735

SERVICE DEPARTMENT HOURS: DAILY 7 A.M. TO MIDNIGHT SATURDAY UNTIL NOON

FOLKERS BIG TREE LOT

1/3 Off . . . Clearance Sale

3 DAYS ONLY Friday, May 3rd., Saturday, May 4th., and Sunday, May 5th.

For the purpose of clearing up our big tree lot and to avoid the necessity of moving the trees to our Home Lot, located at Cherry Hill and Middlebelt Roads in Garden City, Michigan, we are offering a 1/3 off sale on the trees that are left which are as follows:

18 Sugar Maple	3 to 4" dia. trunks
20 Sugar Maple	2 to 2 3/4" dia. trunks
4 Silver Maple	2 to 3" dia. trunks
2 Red Maple	6 1/2 and 8" trunks
5 American Sycamore	2 1/2 to 3" trunks
1 American Sycamore	5" trunk
2 Pin Oak	2 to 3" dia. trunks
2 Pin Oak	3 to 4" dia. trunks
4 Pin Oak	4 to 5" dia. trunks
2 Pin Oak	6" trunk
9 Sweet Gum	2 3/4 to 3 1/2" trunks
41 Birch Clumps	of various sizes

Don't forget the location, Telegraph and Maple, (just east of Peter Pan).
Tree Lot phone MI 6-8727—Home Office phone GA 1-1363.

FOLKERS NURSERY CO.
Corner Cherry Hill & Middlebelt Roads
Garden City, Michigan

In response to the many inquiries, we are presenting the following popular items during the THREE-DAY SALE:

WHITE FLOWERING DOGWOOD
Ranging in size from 6" to 14", the latter with a trunk diameter of 3". (These are in bloom.)

RED FLOWERING DOGWOOD
We will offer three sizes—4 to 5', 5 to 6', and 6 to 7'.

REBUD
Single stem up to 10 feet. Clump of 3 to 6 stem and a height of 4 to 8 feet.

MORAINÉ LOCUST
That new wonder tree that grows from 3 to 6 feet per year yet is satisfactory in every way as well. These will be available in several sizes, the largest of which will be 10 to 12' with a trunk diameter of 2".

CRIMSON KING MAPLE
These will be available in several sizes with the largest being 8 to 10' with a trunk diameter of 1 1/4".