

It is at the beginning and the conclusion of mortal existence when mankind stands in wonder and in grief... for here are revealed questions that continue to confound and bewilder men of us. In the part of between birth and death so little profound thought is given to the whole mission of human existence. We seem to love the flashpots most.

The Birmingham Eccentric

SECTION D

Thursday, May 2, 1957

It's Tornado Time in Michigan Again

Michigan Hit Worst In 1956

Last year Michigan was listed by the Federal Civil Defense Administration as the state worst hit by tornadoes with 21 dead, 481 injured and \$23,010,000 in property damage.

What once was considered a major concern only of the plains southern states appears to be making yearly appearances in the Great Lakes area.

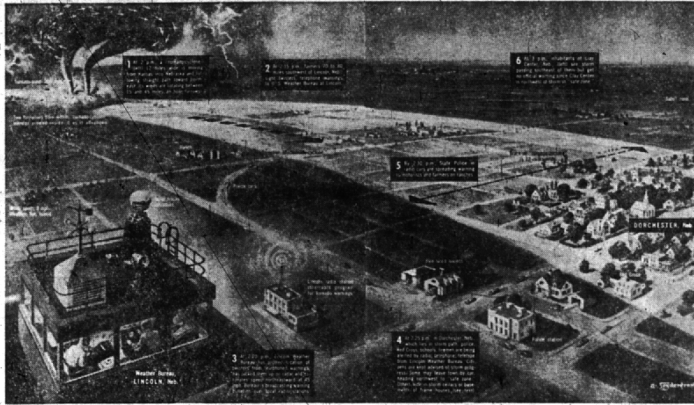
Only last Wednesday a tornado cloud was spotted in the Milford area a dozen miles west of Birmingham.

UNFORTUNATELY, there is no guarantee that the next tornado, perhaps next week, will pass a dozen miles east of Milford, through the Birmingham area. Perhaps what you learn from information on this page may mean that you will be around to talk about a tornado. If you should strike in your area.

IN THE unstable transition from winter cold to summer heat, great masses of cold and warm air collide. When the heavier cold air is forced above the lighter warm air, funnels sometimes form to relieve the topsy-turvy situation. This is the twister.

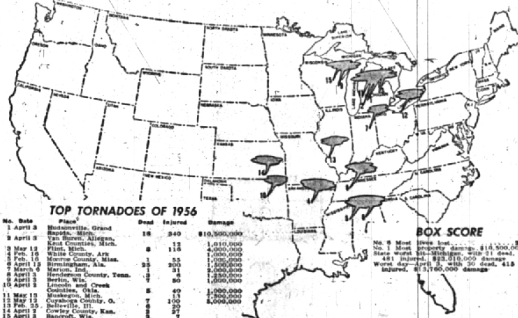
SOME 800 tornadoes boil up each year in the United States. When they strike, local civil defense and the Red Cross speed to the rescue. Spring is the time for a special weather eye to the tornado-sweeping southwest. Last year, for instance, every major tornado occurred between February and May. On one day—April 3—four giant twisters killed 30 persons, injured 415 and caused an estimated \$13,750,000 damage.

THERE is no way to prevent a tornado. But early warning, proper precautions and speedy rescue of victims can save lives. In addition, disaster funds administered by the Federal Civil Defense Administration can provide emergency repairs and restoration of vital community facilities when Federal assistance is authorized by the President to augment State and local efforts.



TORNADO warning in time can mean difference between heavy loss of life and light casualties when twisters sweep into populated areas. Under experimental Weather Bureau program for tornado tracking by radar and telephoned visual reports, adequate warning could be broadcast so local civil

defense, police and firemen could evacuate residents or advise them to seek cover in basements. This drawing shows how such a warning station in Lincoln, Neb., in the expected path of a twister. Twin funnels are an unusual phenomenon. Most tornadoes occur singly.



MAJOR TORNADES OF 1956, as compiled from preliminary Weather Bureau data, clearly point to Spring as a time for special watchfulness by residents of central United States.

Twister Safeguards To Follow

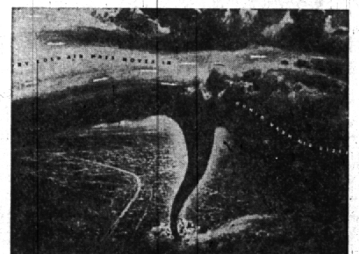
- People in open country can view the approach of a tornado and move at right angles to its path. If there is no time to escape, lie flat in the nearest depression, such as a ditch or ravine.
- In towns or cities, seek shelter inside, preferably in a substantial building. Stay away from windows.
- The southwest corner of the basement of a frame house is safer than in a brick or stone house. If there is no basement, lie down on the first floor under a table or bed (preferably in the southwest corner).
- Urban schools: Stay inside, away from windows; remain near an inside wall on a lower floor. Avoid auditoriums and gymnasiums.
- Rural schools of frame construction: Teachers should remove children to a ravine or ditch if storm shelter is not available.



ERRATIC trail left by the twister which hit Flint May 12, 1956 is typical of tornadoes as the funnel weaves and bores over the landscape, generally in a southwest to northeast direction.



TYPICAL tornado funnel sweeps across Manhattan, Kan., which is in the world's worst tornado belt.



BIRTH of a tornado occurs when cold and warm air masses collide, and the heavier cold air is deflected above the lighter warm air. In this topsy-turvy situation, a tongue of cold air dips into the warm air, which in turn moves upward to fill the void thus created. As the warm air rushes upward in a spiral motion, other warm air is sucked upward from lower levels, until the ground is reached. Condensed most air, dirt and debris make the funnel visible.

Hills' Kephart Given MML Regional Post
Bloomfield Hills City Manager Elmer Kephart was named secretary of the Michigan Municipal League's Region Four when 125 Michigan municipal officials gathered in Pontiac to name new regional officers.

To Get Earlier Start
TROY — Time of council meetings, held regularly on the second and fourth Mondays of each month, has been shifted from 8 p.m. to 7:30 p.m. Commissioners hope to get out earlier by the change.

Nurses Meet Here
Nurses from five districts of the Michigan State Nurses association met here Wednesday in a one-day conference arranged for by Oakland County district President Anyce Gillette.

Appoint 7 Appeal Board Members
TROY — Seven persons, including two new members, have been appointed to the city board of appeals by the city commission. New members are Clifford Sutermeister who received a three-year appointment and John Davis whose term runs for one year. Reappointed were Frank Christian, Allan Parrish, Robert Lossing, Donald Lapee and Frederick Butcher.

"I'll Put \$282 In Your Pocket"

YOUR NASH DEALER

That's only to start with! While other car prices are up \$200, \$500 or more, our 1957 prices are down \$282 on this beautiful new Nash Ambassador Country Club. It's the biggest of the big V-8's. Biggest room. Biggest, softest coil springs on all four wheels. Biggest, most powerful engine in Nash history.

NASH PRICES DOWN AS MUCH AS \$282!

Don't pay hundreds of dollars more than the price of a Nash for a smaller, less powerful car. Don't take a vacation without looking at Nash, the world's finest travel car, with everything from Airliner Reclining Seats to All-Season Air Conditioning to double your vacation fun. See it! Drive it! Price it!

AMERICAN MOTORS MEANS MORE FOR AMERICANS

Join the Swing to the Travel King
'57 Nash V-8
WORLD'S FINEST TRAVEL CAR

BIRMINGHAM NASH
666 S. Woodward—Birmingham—MI 6-2900

We Have Them Now!
Smoked Elk Oxfords
by PLAY-POISE

These are those famous soft elk oxfords we sold so many pairs of last summer. They feature a combination last, and soft supple elk, and easy to clean, gives exceptionally long wear.

Sizes 8 1/2 - 12, \$7.95 12 1/2 - 3, \$8.95

All Children's Shoes Correctly Fitted by Mr. McSweeney

McSWEENEY'S
FINE FOOTWEAR
277 Pierce Open Friday to 9:00 MI 6-4488
Orthopedic Shoes for Children

Create a Contemporary Styling
with a
Continental Bed

Custom headboards, covered in your own fabric to match bedspread or draperies

COMPLETE LINE OF BEDDING

R. C. CARPENTER
SLUMBER SHOP
28879 Greenfield (south of 12 Mile) LI 4-9133
Open Thurs. & Fri. Till 9 P.M.