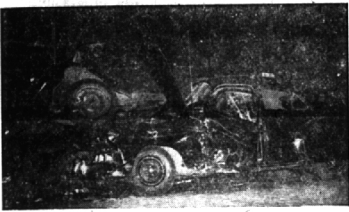


# The Birmingham Eccentric

No two people, we all know, are exactly alike in their likes and dislikes, in their tastes, characteristics. Indeed, in this respect the human family is the pattern, may we say, for the millions of this earth; they endeavor not to make any two hats exactly alike . . . at least if they are to be sold and worn in the same town.

## HE THOUGHT HE WAS RIGHT



Even through the darkness of the rainy night, Jonathan had been able to make out the US-10 speed limit sign. "Speed limit 35," it read.

Jonathan was in a hurry to get home, but he was careful to see that he didn't go faster than 35 miles an hour. He'd never broken a speed limit in his life.

He was still doing 35 when the black mass of the truck loomed out of the darkness. Jonathan applied his brakes, but the distance was too short.

HIS MOMENTUM carried him into and under the truck with a shattering crash.

After Jonathan's body had been removed from the wreckage, the investigating officer glanced curiously at the shattered instrument panel of Jonathan's car. Frozen by the impact, the speedometer still registered 35 miles an hour.

In his accident report the officer entered the speed recorded on the instrument, then followed it with a brief notation, "Too fast for driving conditions."

JONATHAN thought he was right in driving at exactly the speed limit that dark and stormy night. But he forgot that speed limits are set for good driving conditions with dry pavements and excellent visibility.

He forgot that the smart driver adjusts his speed to road and weather conditions, not an arbitrary speed limit.

Jonathan is now just another statistic, even though he was right in his own mind.



*if you're like me.*  
Says the Barrister

You can't make head or tail of the rules and procedures of courts and you wonder if they're all necessary to justice.

Sometimes rules and regulations grow like Topsy. New rules are made, new laws are passed, and the old regulations still remain on the books. That happens with laws of our state and national government, it happens in organizations and I suspect it happens in court procedures.

Of course, it doesn't make too much difference if that happens in some of our organizations or even some of our organizations or even just middle class and nobody gets hurt; and there isn't any big shout for revisions, codifications and whatnots.

But it does make a difference to us when procedures of the courts become outmoded or conflicting. It costs us money—plain hard cash. It can result in unnecessary effort, tedious delays and even injustice.

THAT'S WHY I was tickled to read in the papers that some action was being taken by New Jersey, Illinois, Florida and several other states to revise the practices and procedures of their courts. And

now I find a big new committee composed of representatives of the legislature, the supreme court and the state bar is starting to do the same thing in Michigan.

This committee announces that, among other things, it proposes to "reduce the expenditure of time, effort, and money by litigants, the courts, and the bar." Also it wishes to "de-emphasize procedural niceties so that cases can more readily be disposed of on their merits."

I say more power to them and lots of folks are going to agree with me, I'll bet.

**APTITUDE TESTS**  
enable you to learn the kind of work YOU can best succeed in, or the kind of career YOU should follow. (For men and women, boys and girls.)  
Vocational Counseling Institute  
Daniel L. Beck, Director  
958 Massachusetts Bldg. Temple 1-1551  
Woodward near Warren  
11 Years Serving Detroit

## House Organs - - - ?

YES . . . WE PRINT MORE PUBLICATIONS THAN ANY PRINTER IN MICHIGAN

Three Detroit Salesmen . . . TR 5-2629 . . . Plant MI 6-2000

The AVERILL PRESS INC. of Birmingham  
A COMPLETE PRINTING SERVICE—FROM TYPESETTING TO MAILING

FORMERLY THE BIRMINGHAM ECCENTRIC PRINTING DEPARTMENT

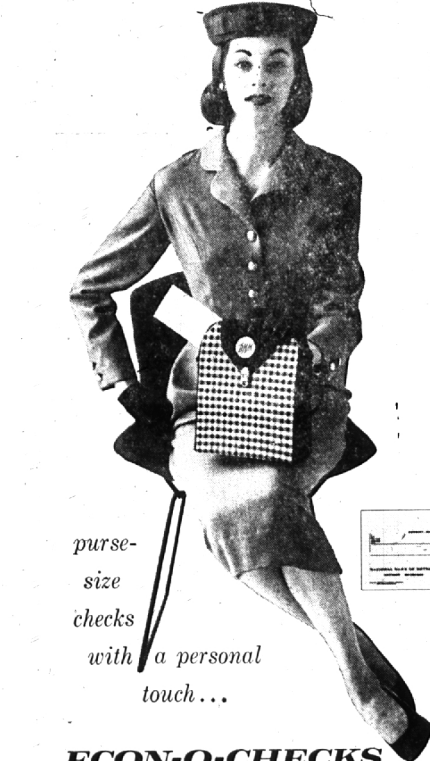
You will find many bargains in The Eccentric Classified Columns.

## Who'll Volunteer?

The League Shop, 312 Hamilton, Birmingham, retail outlet for merchandise made by the Detroit League for the Handicapped, needs volunteer salesladies. For information call the Southern Oakland Volunteer Bureau, 117-1101, a United Community Services agency serving from 8 Mile road thru Birmingham-Bloomfield.

Shopping is convenient in Birmingham . . . here there is always plenty of parking.

**DRYERS VENTED**  
all aluminum construction . . . stops lint and moisture  
**\$15.95** most models  
Kitchen and Attic Ventilating Fans.  
Sales, Service and Insulation  
**MERIT-ELECTRIC COMPANY**  
LI 1-2284



purse-size checks with a personal touch . . .

## ECON-O-CHECKS

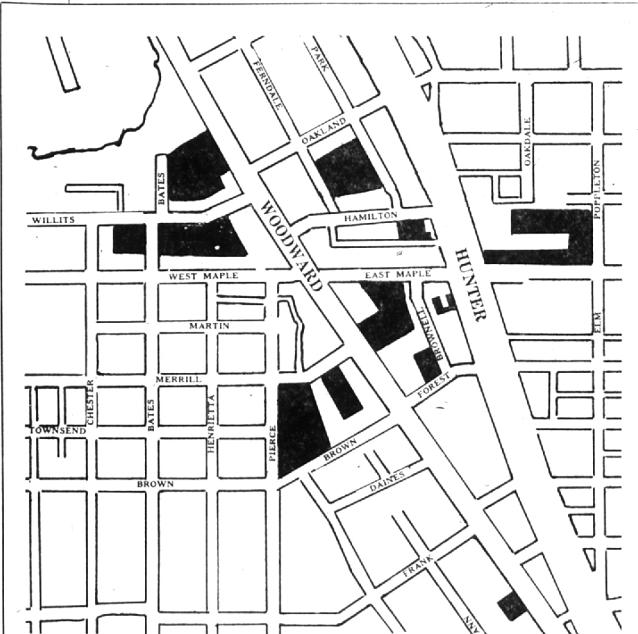
ECON-O-CHECKS® are made to fit your purse in more ways than one. They're the ideal, low-cost way to enjoy checking account convenience—if you write only a few checks a month, or keep a moderate balance in a checking account. You get 20 checks, with your name printed free on every one, for only one fixed charge. No minimum balance, no monthly service charge, no charge for deposits or statements. And they come in a handsome and convenient-to-carry case, complete with a check record. So ask about them at any of the 56 NBD offices in Detroit and suburbs which offer you every banking and trust service.

More friends because we help more people

**NATIONAL BANK OF DETROIT**  
Member Federal Deposit Insurance Corporation

# Shopping Is Convenient In Birmingham

Where There Is Always Plenty of Parking



On the map above are indicated the off-street parking facilities in Birmingham. They include municipal as well as privately-owned lots. All are open to the public. In addition to off-street parking, 600 metered spaces are available on the streets in the downtown area.

The most recently opened lot is the municipal lot located between Hamilton and Oakland. Featuring many all-day meters among its 177 parking spaces, it's a sure bet for quick parking any day of the week, and it's only 2 minutes from Woodward and Maple.

Another municipal lot is located at Pierce and Brown streets. Two other municipal lots are now under construction. One is located at Forest & Brownell and the other on Hamilton just west of Hunter Blvd. both will open this year. Every store in Birmingham is within a minutes' walk from one of the many lots. Shop in Birmingham. It's Convenient!

Now, added to the wonderfully varied shopping facilities in Birmingham is added a convenience you may never have dreamed existed. Parking facilities for over 1000 cars.

An off-street parking development program backed by the Birmingham retail merchants and the Chamber of Commerce has accounted for the rapid increase in parking facilities in Birmingham, facilities that mean SHOPPING CONVENIENCE FOR YOU.

Birmingham is adding more than parking to its repertoire of shopper facilities. Last year 76 new and remodeled stores offered the latest in redesigned quarters. You'll find every type of store in Birmingham and products in every price range.

SHOP CONVENIENTLY — SHOP IN LUXURY — SHOP IN BIRMINGHAM YOU'LL ENJOY IT!

## SPONSORED BY THE FOLLOWING RETAIL MERCHANTS

- |  |  |  |  |   |  |   |   |  |                                |   |
|--|--|--|--|---|--|---|---|--|--------------------------------|---|
| <b>North Woodward, West Side</b><br>Wilson Drug Co.<br>Acme Quality Paints, Inc.<br>Gregory, Mayer & Thom Co.<br>Eggleston's<br>Huston Hardware Co.<br>F. J. Mulholland Co.<br>Herbert Burr Shoes<br>Peter Pan Restaurants, Inc. | <b>North Woodward, East Side</b><br>Miller's Shoes<br>Birmingham Fruit & Grocery Co.<br>Arthur Murray Studio<br>Birmingham Hardware<br>Hawthorne Electrical Co.<br>Bodie's<br>The Detroit Bank & Trust Co.<br>The Birmingham Eccentric<br>Warfield Paint Co. | <b>South Woodward, East Side</b><br>Grinnell Bros.<br>Davidson's Women's Apparel<br>Hansel 'n' Gretel<br>Benjamin & Stephens, Inc. | <b>West Maple, North Side</b><br>Danby's<br>Kay Baum Shop<br>Hemelbochs<br>Shoe Brothers<br>Kay Cooley Inc.<br>Higgins & Frank<br>Dickinson's Men's Shop<br>Jacobson's | <b>South Woodward, West Side</b><br>Lake's Jewelers<br>The Sportman | <b>East Maple, North Side</b><br>Murphy's Barber Shop<br>Kincaid's Jewelers<br>McCallum & Dean | <b>East Maple, South Side</b><br>George Ross Jewelers | <b>West Maple, South Side</b><br>Birmingham Federal Savings & Loan Assn<br>Shain's Retail Drugs<br>Williams Boot Shop<br>Montgomery's Men's Wear<br>LaBelle's | <b>Pierce Street</b><br>Macy's Tailors Inc.<br>Young's of Birmingham<br>Lewis Furniture Corp.<br>Preston Post Shop<br>The Wine Shop<br>McSweeney's Fine Footwear<br>The Varsity Shop | <b>Hamilton</b><br>League Shop | <b>Raimi's Curtains</b><br>S. S. Krzyg Co.<br>Modern Beauty Salon |
|--|--|--|--|---|--|---|---|--|--------------------------------|---|